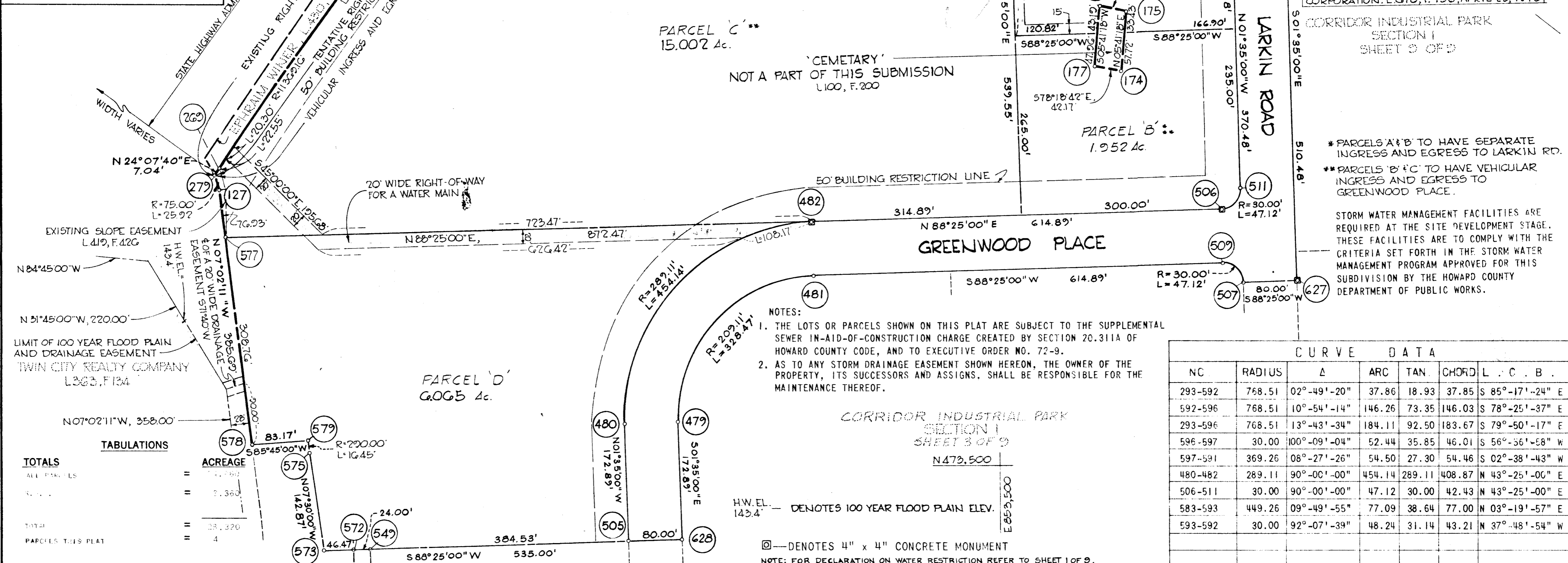


NO.	RADIUS	Δ	ARC	TAN.	CHORD	L. C. B.
507-509	30.00	90°-00'-00"	47.12	30.00	42.43	N 46°-35'-00" W
481-479	209.11	90°-00'-00"	328.47	209.11	295.73	S 43°-25'-00" W
575-579	290.00	03°-15'-00"	16.45	8.23	16.45	N 05°-52'-30" W
127-279	75.00	19°-48'-16"	25.92	13.09	25.80	N 16°-56'-14" W
269-270	11369.16	02°-23'-59"	476.19	238.13	476.16	N 36°-13'-35" E
271-272	5819.58	02°-03'-37"	209.27	104.65	209.26	N 36°-23'-46" E
278-136	1195.90	30°-56'-05"	645.68	330.92	637.87	S 71°-14'-01" E



NO.	RADIUS	Δ	ARC	TAN.	CHORD	L. C. B.
293-592	768.51	02°-49'-20"	37.86	18.93	37.85	S 85°-17'-24" E
592-596	768.51	10°-54'-14"	146.26	73.35	146.03	S 78°-25'-37" E
293-596	768.51	13°-43'-34"	184.11	92.50	183.67	S 79°-50'-17" E
596-597	30.00	100°-09'-04"	52.44	35.85	46.01	S 56°-56'-58" W
597-591	369.26	08°-27'-26"	54.50	27.30	54.46	S 02°-38'-43" W
480-482	289.11	90°-00'-00"	454.14	289.11	408.87	N 43°-25'-00" E
506-511	30.00	90°-00'-00"	47.12	30.00	42.43	N 43°-25'-00" E
583-593	449.26	09°-49'-55"	77.09	38.64	77.00	N 03°-19'-57" E
593-592	30.00	92°-07'-39"	48.24	31.14	43.21	N 37°-48'-54" W

TABULATIONS

TOTALS	ACREAGE
ALL PARCELS	11.190
RESERVED	2.360
TOTAL	13.550
PARCELS THIS PLAT	4

APPROVED: FOR PUBLIC WATER AND PUBLIC SEWERAGE SYSTEMS, HOWARD COUNTY HEALTH DEPARTMENT.

[Signature] COUNTY HEALTH OFFICER DATE

APPROVED: HOWARD COUNTY OFFICE OF PLANNING AND ZONING.

[Signature] DIRECTOR DATE

APPROVED: FOR PUBLIC WATER AND PUBLIC SEWERAGE, STORM DRAINAGE SYSTEMS AND PUBLIC ROADS, HOWARD COUNTY DEPARTMENT OF PUBLIC WORKS.

[Signature] DIRECTOR DATE

SURVEYOR'S CERTIFICATE

I, hereby certify that the Final Plat shown hereon is correct: that it is a subdivision of part of the lands conveyed, by Ephraim Winer, et. al. and Samuel A. Hearn, et. al. to Columbia Industrial Development Corporation deeds dated April 29, 1974 and January 12, 1975, respectively, and recorded in the land records of Howard County, in Liber 378, Folios 749 thru and including 757 and Liber 709, Folios 421 thru and including 425; and that all monuments are in place as shown in accordance with the Annotated Code of Maryland, as amended.

PROFESSIONAL LAND SURVEYOR

(By) *[Signature]* DONALD E. FINCH Reg. No. 8057

CENTURY ENGINEERING, INC., TOWSON, MD 21204

DEDICATION FOR CORPORATION

We, Columbia Industrial Development Corporation, a Maryland corporation by Douglas A. McCreor, Vice President and Francis R. Hunter Jr., Assistant Secretary, owner of the property shown and described hereon, hereby adopt this plan of subdivision, and in consideration of the approval of this Final Plat by the Office of Planning and Zoning, establish the minimum building restriction lines; and dedicate the streets, alleys, walkways, and other easements, widening strips and floodplains, and open space where applicable to public use. All easements, or rights-of-way affecting the property are included in this plan of subdivision. Witness my four hands this 31st day of JAN. 1975.

OWNER

(By) *[Signature]* DOUGLAS A. MCCREOR VICE PRES.

[Signature] FRANCIS R. HUNTER JR. ASSISTANT SEC.

COLUMBIA INDUSTRIAL DEVELOPMENT CORPORATION, COLUMBIA, MD 21043

RECORDED IN PLAT BOOK 31 FOLIO 13

on August 6, 1975 among The Land Records of Howard County, Maryland.

CORRIDOR INDUSTRIAL PARK SECTION I

Sheet 2 of 9

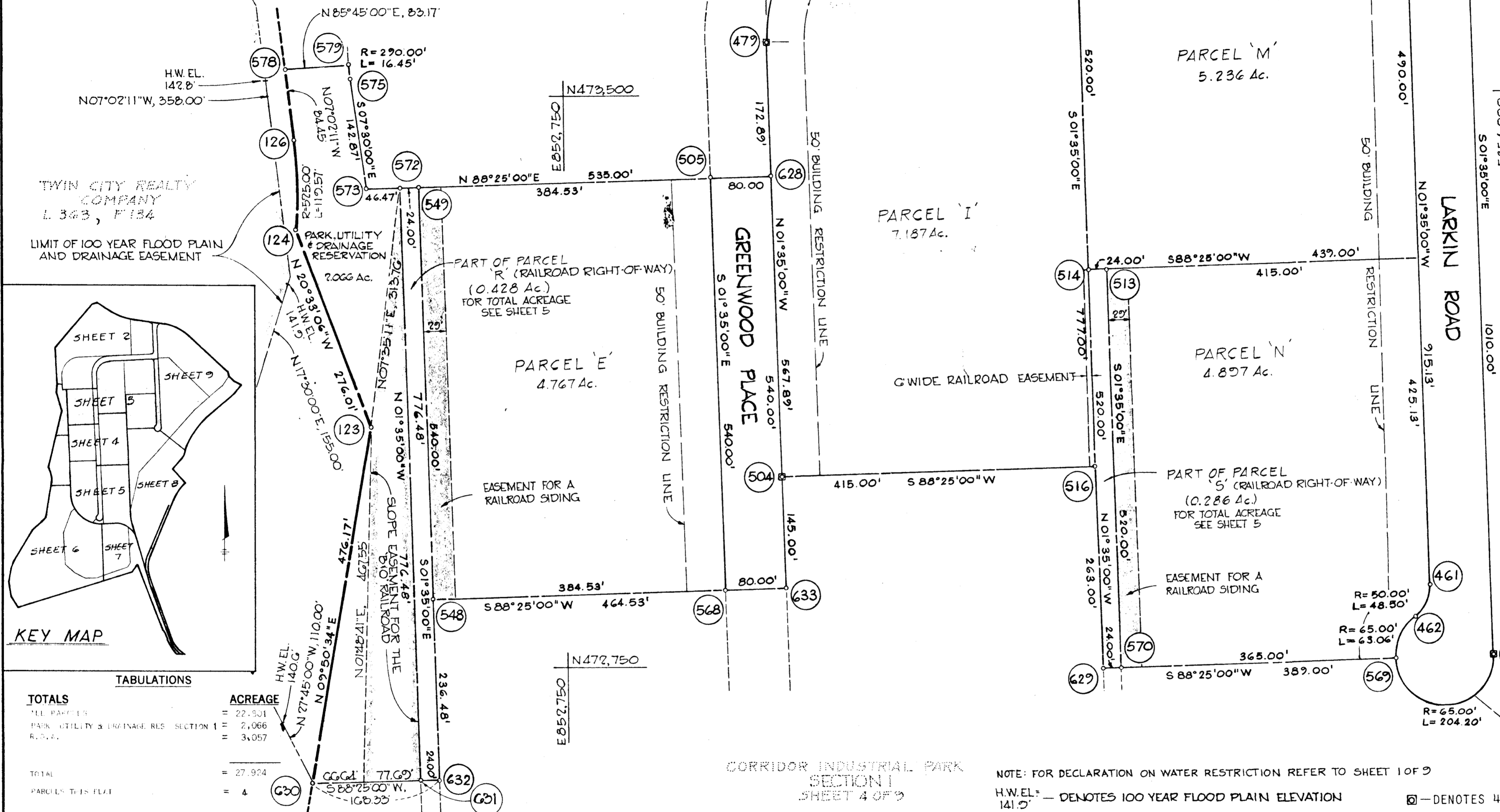
Election District of Howard County, Md.

Scale: 1" = 100' Date: 1-31-75

BRUNING 44-512 23127

CURVE DATA						
NO.	RADIUS	Δ	ARC	TAN.	CHORD	L. C. B.
463-569	65.00	180°-00'-00"	204.20		130.00	S 88°-25'-00" W
124-126	525.00	13°-02'-57"	119.57	60.04	119.31	N 00°-30'-43" W
579-575	290.00	03°-15'-00"	16.45	8.23	16.45	S 05°-52'-30" E
479-481	209.11	90°-00'-00"	328.47	209.11	295.73	N 43°-25'-00" E
509-507	30.00	90°-00'-00"	47.12	30.00	42.43	S 46°-35'-00" E
463-462	65.00	235°-34'-57"	267.26	123.33	115.00	N 63°-47'-31" W
569-462	65.00	55°-34'-57"	63.06	34.26	60.61	N 26°-12'-29" E
462-461	50.00	55°-34'-57"	48.50	26.35	46.62	N 26°-12'-29" E

CORRIDOR INDUSTRIAL PARK
SECTION I
SHEET 2 OF 9



- NOTES:
1. THE LOTS OR PARCELS SHOWN ON THIS PLAT ARE SUBJECT TO THE SUPPLEMENTAL SEWER IN-AID-OF-CONSTRUCTION CHARGE CREATED BY SECTION 20.311A OF HOWARD COUNTY CODE, AND TO EXECUTIVE ORDER NO. 72-9.
 2. AS TO ANY STORM DRAINAGE EASEMENT SHOWN HEREON, THE OWNER OF THE PROPERTY, ITS SUCCESSORS AND ASSIGNS, SHALL BE RESPONSIBLE FOR THE MAINTENANCE THEREOF.
 3. A PORTION OF THE EXISTING B.G. & E. POLE LINE AGREEMENT RECORDED AMONG THE LAND RECORDS OF HOWARD COUNTY, MARYLAND IN LIBER 393, FOLIO 467; RUNNING THROUGH PARCELS 'K' & 'S' AND LOTS 1 & 2 OF THIS SUBMISSION IS TO BE ABANDONED.

CORRIDOR INDUSTRIAL PARK
SECTION I
SHEET 2 OF 9

STORM WATER MANAGEMENT FACILITIES ARE REQUIRED AT THE SITE DEVELOPMENT STAGE. THESE FACILITIES ARE TO COMPLY WITH THE CRITERIA SET FORTH IN THE STORM WATER MANAGEMENT PROGRAM APPROVED FOR THIS SUBDIVISION BY THE HOWARD COUNTY DEPARTMENT OF PUBLIC WORKS.

NOTE: FOR DECLARATION ON WATER RESTRICTION REFER TO SHEET 1 OF 9
H.W.EL. - DENOTES 100 YEAR FLOOD PLAIN ELEVATION
□ - DENOTES 4" x 4" CONCRETE MONUMENT

APPROVED: FOR PUBLIC WATER AND PUBLIC SEWERAGE SYSTEMS, HOWARD COUNTY HEALTH DEPARTMENT.

COUNTY HEALTH OFFICER _____ DATE _____

APPROVED: HOWARD COUNTY OFFICE OF PLANNING AND ZONING.

DIRECTOR _____ DATE _____

APPROVED: FOR PUBLIC WATER AND PUBLIC SEWERAGE, STORM DRAINAGE SYSTEMS AND PUBLIC ROADS. HOWARD COUNTY DEPARTMENT OF PUBLIC WORKS.

DIRECTOR _____ DATE _____

SURVEYOR'S CERTIFICATE

I, hereby certify that the Final Plat shown hereon is correct; that it is a subdivision of part of the lands conveyed, By Ephraim Winer, et. al. and Samuel A. Hearn, et. al. to Columbia Industrial Development Corporation deeds dated April 29, 1974 and January 18, 1975, respectively, and recorded in the land records of Howard County, in Liber 678, Folios 749 thru and including 757 and Liber 709, Folios 421 thru and including 425; and that all monuments are in place as shown in accordance with the Annotated Code of Maryland, as amended.

PROFESSIONAL LAND SURVEYOR
(By) Donald E. Finch Reg. No. 8057
CENTURY ENGINEERING, INC. TOWSON, MD 21204

DEDICATION FOR CORPORATION

We, Columbia Industrial Development Corporation, a Maryland corporation by Douglas A. McGregor, Vice President and Francis R. Hunter Jr., Assistant Secretary, owner of the property shown and described hereon, hereby adopt this plan of subdivision, and in consideration of the approval of this Final Plat by the Office of Planning and Zoning, establish the minimum building restriction lines; and dedicate the streets, alleys, walkways, and other easements, widening strips and floodplains, and open space where applicable, to public use. All easements or rights-of-way affecting the property are included in this plan of subdivision. witness my/our hand/s this 31st day of JAN, 1975.

OWNER
(By) Douglas A. McGregor VICE PRES.
Francis R. Hunter Jr. ASS'T. SEC.
COLUMBIA INDUSTRIAL DEVELOPMENT CORPORATION, COLUMBIA, MD 21043

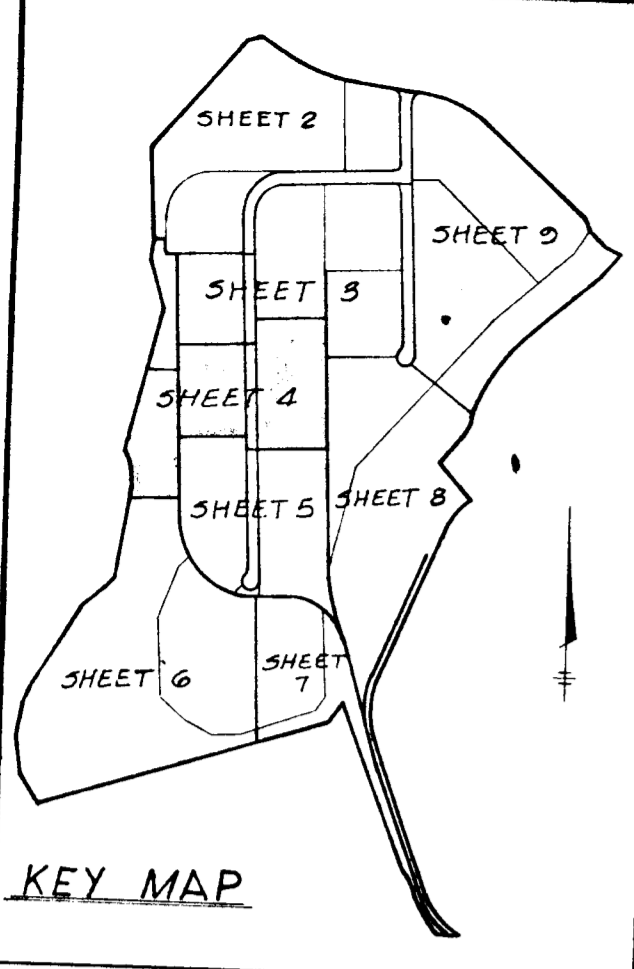
RECORDED IN PLAT BOOK 31 FOLIO 14
on AUGUST 6, 1975 among The
Land Records of Howard County, Maryland.

CORRIDOR INDUSTRIAL PARK
SECTION I

Sheet 3 of 9
6th Election District of Howard County, Md.
Scale: 1" = 100' Date: 1-31-75

BRUNING 44-512 23127

F 75-57

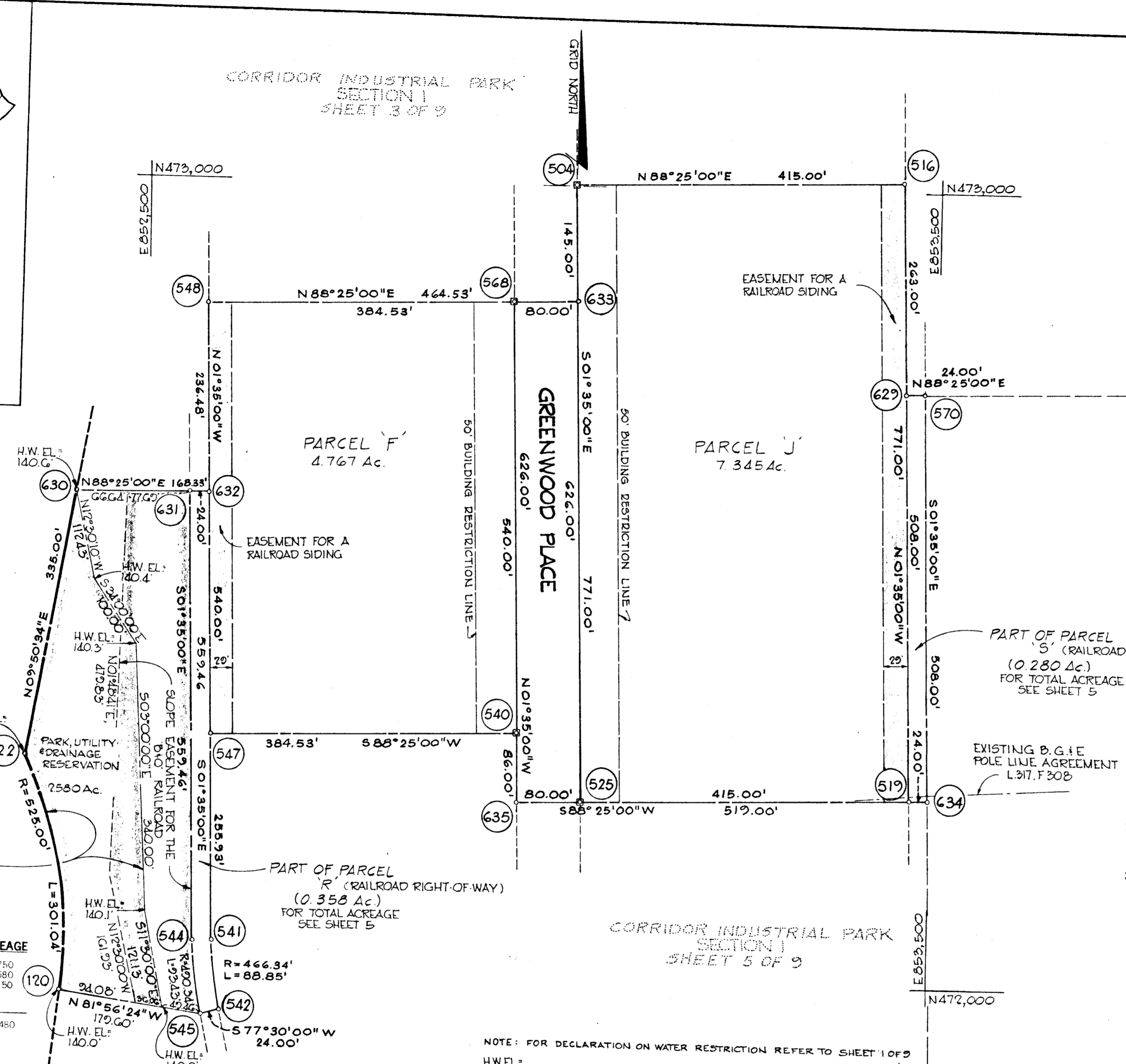


CORRIDOR INDUSTRIAL PARK
SECTION I
SHEET 3 OF 9

CURVE DATA						
NO.	RADIUS	Δ	ARC	TAN.	CHORD	L. C. B.
541-542	466.34	10°-55'-00"	88.85	44.56	88.72	S 07°-02'-30" E
120-122	525.00	32°-51'-13"	301.04	154.78	296.93	N 09°-48'-50" W
544-545	490.34	10°-55'-00"	93.43	46.56	93.28	S 07°-02'-30" E

KEY MAP

TWIN CITY REALTY COMPANY
L 363, P 134



CORRIDOR INDUSTRIAL PARK
SECTION I
SHEET 8 OF 9

STORM WATER MANAGEMENT FACILITIES ARE REQUIRED AT THE SITE DEVELOPMENT STAGE. THESE FACILITIES ARE TO COMPLY WITH THE CRITERIA SET FORTH IN THE STORM WATER MANAGEMENT PROGRAM APPROVED FOR THIS SUBDIVISION BY THE HOWARD COUNTY DEPARTMENT OF PUBLIC WORKS.

NOTES:

1. THE LOTS OR PARCELS SHOWN ON THIS PLAT ARE SUBJECT TO THE SUPPLEMENTAL SEWER IN-AID-OF-CONSTRUCTION CHARGE CREATED BY SECTION 20.311A OF HOWARD COUNTY CODE, AND TO EXECUTIVE ORDER NO. 72-9.
2. AS TO ANY STORM DRAINAGE EASEMENT SHOWN HEREON, THE OWNER OF THE PROPERTY, ITS SUCCESSORS AND ASSIGNS, SHALL BE RESPONSIBLE FOR THE MAINTENANCE THEREOF.
3. A PORTION OF THE EXISTING B.G. & F. POLE LINE AGREEMENT RECORDED AMONG THE LAND RECORDS OF HOWARD COUNTY MARYLAND IN LIBER 393, FOLIO 467; RUNNING THROUGH PARCELS 'K' & 'L' AND LOTS 1 & 2 OF THIS SUBMISSION IS TO BE ABANDONED.

TOTALS

ACREAGE
ALL PARCELS
PARK UTILITY & DRAINAGE RES. SECTION I
TOTAL
PARCELS THIS PLAT

CORRIDOR INDUSTRIAL PARK
SECTION I
SHEET 5 OF 9

NOTE: FOR DECLARATION ON WATER RESTRICTION REFER TO SHEET 1 OF 9
H.W.E.L. 140.0' - DENOTES 100 YEAR FLOOD PLAIN ELEVATION

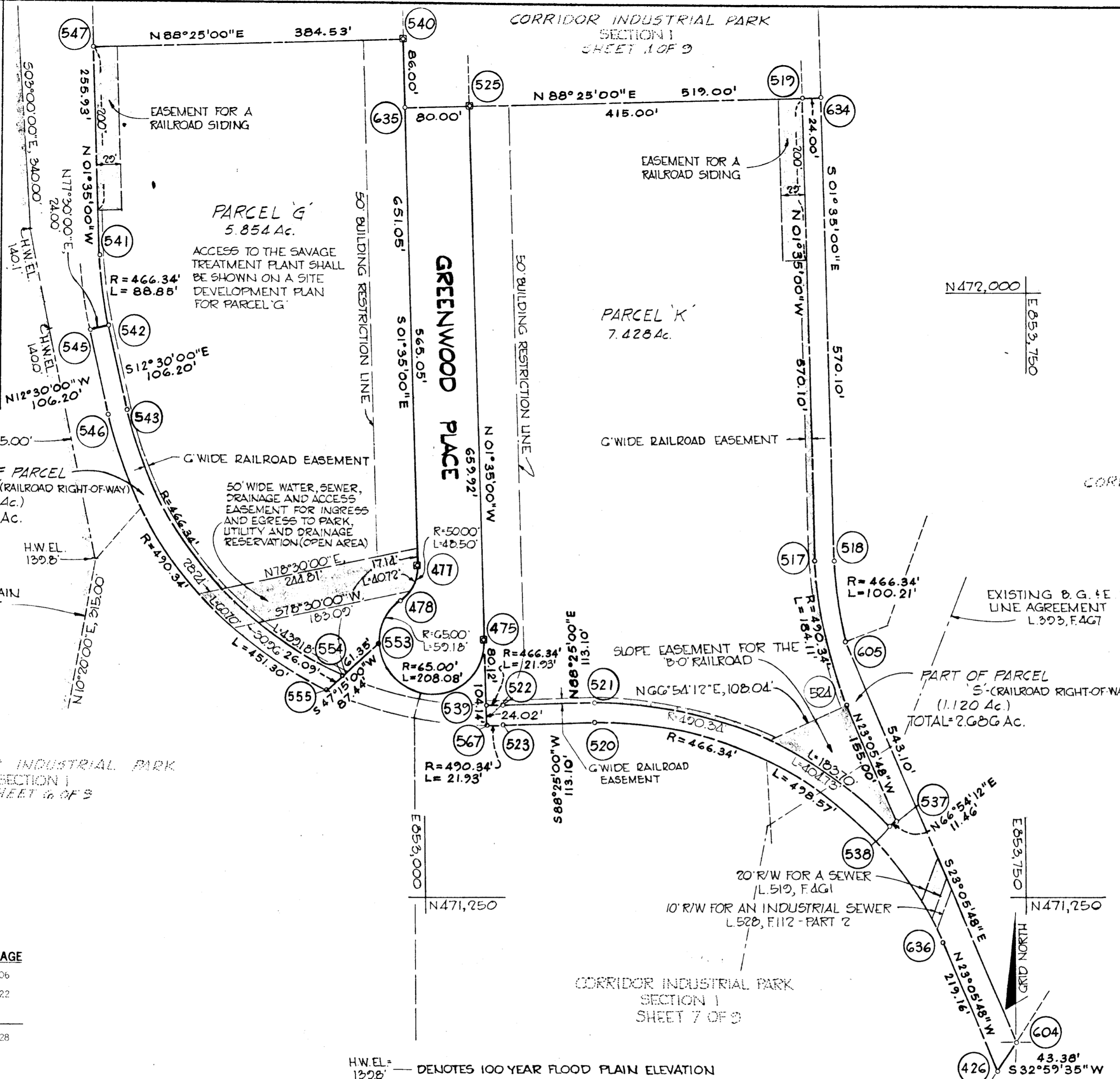
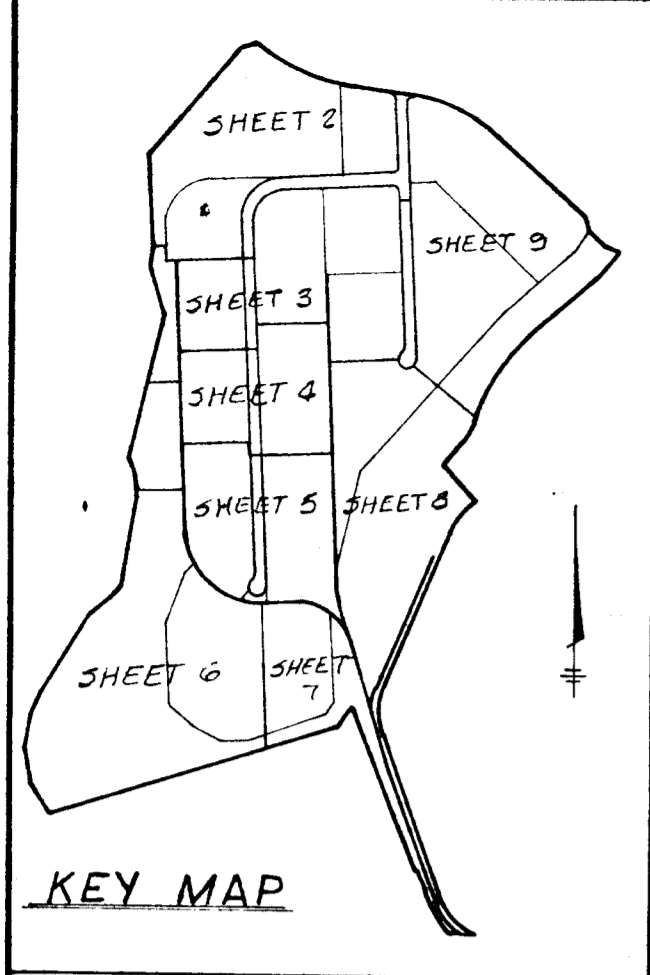
APPROVED: FOR PUBLIC WATER AND PUBLIC SEWERAGE SYSTEMS, HOWARD COUNTY HEALTH DEPARTMENT,
COUNTY HEALTH OFFICER
DATE
APPROVED: HOWARD COUNTY OFFICE OF PLANNING AND ZONING.
DIRECTOR
DATE
APPROVED: FOR PUBLIC WATER AND PUBLIC SEWERAGE, STORM DRAINAGE SYSTEMS AND PUBLIC ROADS, HOWARD COUNTY DEPARTMENT OF PUBLIC WORKS.
DIRECTOR
DATE

SURVEYOR'S CERTIFICATE
I, hereby certify that the Final Plat shown hereon is correct; that it is a subdivision of part of the lands conveyed, By Ephraim Winer, et. al. and Samuel A. Hearn, et. al. to Columbia Industrial Development Corporation deeds dated April 29, 1974 and January 18, 1975, respectively, and recorded in the land records of Howard County, in Liber 678, Folios 749 thru and including 757 and Liber 709, Folios 421 thru and including 425; and that all monuments are in place as shown in accordance with the Annotated Code of Maryland, as amended.
PROFESSIONAL LAND SURVEYOR
(By) DONALD E. FRANCH
Reg. No. 8657
CENTURY ENGINEERING, INC., TOWSON, MD 21204

DEDICATION FOR CORPORATION
We, Columbia Industrial Development Corporation, a Maryland corporation by Douglas A. McGregor, Vice President and Francis P. Hunter Jr., Assistant Secretary, owner of the property shown and described hereon, hereby adopt this plan of subdivision, and in consideration of the approval of this Final Plat by the Office of Planning and Zoning, establish the minimum building restriction lines; and dedicate the streets, alleys, walkways, and other easements, widening strips and floodplains, and open space where applicable, to public use. All easements, or rights-of-way affecting the property are included in this plan of subdivision. Witness my/our hands this 31st day of JAN. 1975.
OWNER
(By) Douglas A. McGregor, VICE PRES.
Francis P. Hunter Jr., ASS'T. SEC.
COLUMBIA INDUSTRIAL DEVELOPMENT CORPORATION, COLUMBIA, MD 21043

RECORDED IN PLAT BOOK 31, FOLIO 15
on August 6, 1975 among The Land Records of Howard County, Maryland.
CORRIDOR INDUSTRIAL PARK
SECTION I
Sheet 4 of 9
6th Election District of Howard County, Md.
Scale: 1" = 100' Date: 1-31-75

BRUNING 44-512 23127



CURVE DATA						
NO.	RAD.	Δ	L	T	C	L.C.B.
518-605	466.34	12°-18'-44"	100.21	50.30	100.02	S 07°-44'-22" E
636-520	466.34	61°-15'-21"	498.57	276.10	475.16	N 60°-57'-19" W
523-567	490.34	02°-33'-46"	21.93	10.97	21.93	S 89°-41'-53" W
478-553	65.00	52°-10'-00"	59.18	31.82	57.16	S 27°-54'-57" W
555-546	490.34	52°-44'-01"	451.30	243.05	435.54	N 38°-52'-00" W
554-543	466.34	53°-57'-34"	439.18	237.40	423.13	N 39°-28'-47" W
522-539	466.34	02°-41'-41"	21.93	10.97	21.93	S 89°-45'-51" W
538-521	490.34	47°-17'-32"	404.73	214.70	393.34	N 67°-56'-14" W
524-517	490.34	21°-30'-48"	184.11	93.15	183.03	N 12°-20'-24" W
475-478	65.00	235°-34'-57"	267.26	-	115.00	N 63°-47'-31" W
553-475	65.00	183°-24'-57"	208.08	-	129.94	S 89°-52'-31" E
478-477	50.00	55°-34'-57"	48.50	26.35	46.62	N 26°-12'-29" E
542-541	466.34	10°-55'-00"	88.85	44.56	88.72	N 07°-02'-30" W

KEY MAP

CORRIDOR INDUSTRIAL PARK SECTION I SHEET 8 OF 9

PART OF PARCEL R (RAILROAD RIGHT-OF-WAY) TOTAL = 1.090 Ac.

PART OF PARCEL S (RAILROAD RIGHT-OF-WAY) TOTAL = 2.686 Ac.

STORM WATER MANAGEMENT FACILITIES ARE REQUIRED AT THE SITE DEVELOPMENT STAGE. THESE FACILITIES ARE TO COMPLY WITH THE CRITERIA SET FORTH IN THE STORM WATER MANAGEMENT PROGRAM APPROVED FOR THIS SUBDIVISION BY THE HOWARD COUNTY DEPARTMENT OF PUBLIC WORKS.

NOTES:

1. THE LOTS OR PARCELS SHOWN ON THIS PLAT ARE SUBJECT TO THE SUPPLEMENTAL SEWER IN-AID-OF-CONSTRUCTION CHARGE CREATED BY SECTION 20.311A OF HOWARD COUNTY CODE, AND TO EXECUTIVE ORDER NO. 72-9.
2. AS TO ANY STORM DRAINAGE EASEMENT SHOWN HEREON, THE OWNER OF THE PROPERTY, ITS SUCCESSORS AND ASSIGNS, SHALL BE RESPONSIBLE FOR THE MAINTENANCE THEREOF.
3. A PORTION OF THE EXISTING B.G. & E. POLE LINE AGREEMENT RECORDED AMONG THE LAND RECORDS OF HOWARD COUNTY, MARYLAND IN LIBER 393, FOLIO 467; RUNNING THROUGH PARCELS 'K' & 'S' AND LOTS 1 & 2 OF THIS SUBMISSION IS TO BE ABANDONED.

NOTE: FOR DECLARATION ON WATER RESTRICTION REFER TO SHEET 1 OF 9
 ☐ DENOTES 4" x 4" CONCRETE MONUMENT

TOTALS

	ACREAGE
ALL PARCELS	11.706
R.O.W.	1.422
TOTAL PARCELS THIS PLAT	16.128

HW. EL. 1398' DENOTES 100 YEAR FLOOD PLAIN ELEVATION

APPROVED: FOR PUBLIC WATER AND PUBLIC SEWERAGE SYSTEMS, HOWARD COUNTY HEALTH DEPARTMENT.

APPROVED: HOWARD COUNTY OFFICE OF PLANNING AND ZONING.

APPROVED: FOR PUBLIC WATER AND PUBLIC SEWERAGE, STORM DRAINAGE SYSTEMS AND PUBLIC ROADS. HOWARD COUNTY DEPARTMENT OF PUBLIC WORKS.

SURVEYOR'S CERTIFICATE

I hereby certify that the Final Plat shown hereon is correct; that it is a subdivision of part of the lands conveyed, By Ephraim Winer, et. al. and Samuel A. Hearn, et. al. to Columbia Industrial Development Corporation deeds dated April 29, 1974 and January 18, 1975, respectively, and recorded in the land records of Howard County, in Liber 678, Folios 749 thru and including 757 and Liber 709, Folios 421 thru and including 425; and that all monuments are in place as shown in accordance with the Annotated Code of Maryland, as amended.

PROFESSIONAL LAND SURVEYOR

(By) DONALD E. FINCH Reg. No. 8057

CENTURY ENGINEERING, INC., TOWSON, MD 21204

DEDICATION FOR CORPORATION

We, Columbia Industrial Development Corporation, a Maryland corporation by Douglas A. McGregor, Vice President and Francis R. Hunter Jr., Assistant Secretary, owner of the property shown and described hereon, hereby adopt this plan of subdivision, and in consideration of the approval of this Final Plat by the Office of Planning and Zoning, establish the minimum building restriction lines; and dedicate the streets, alleys, walkways, and other easements, widening strips and floodplains, and open space where applicable, to public use. All easements, or rights-of-way affecting the property are included in this plan of subdivision. Witness my/our hands this 31st day of JAN. 1975.

OWNER

(By) Douglas A. McGregor VICE PRES.

COLUMBIA INDUSTRIAL DEVELOPMENT CORPORATION, COLUMBIA, MD 21043

RECORDED IN PLAT BOOK 31 FOLIO 16

on August 6, 1975 among The Land Records of Howard County, Maryland.

CORRIDOR INDUSTRIAL PARK SECTION I

Sheet 5 of 9

6th Election District of Howard County, Md.

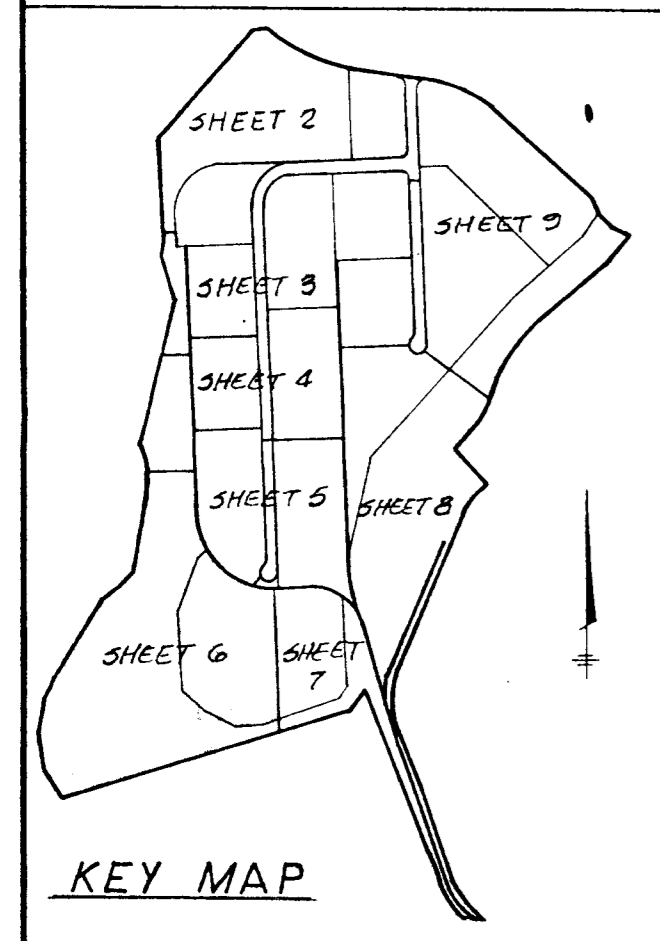
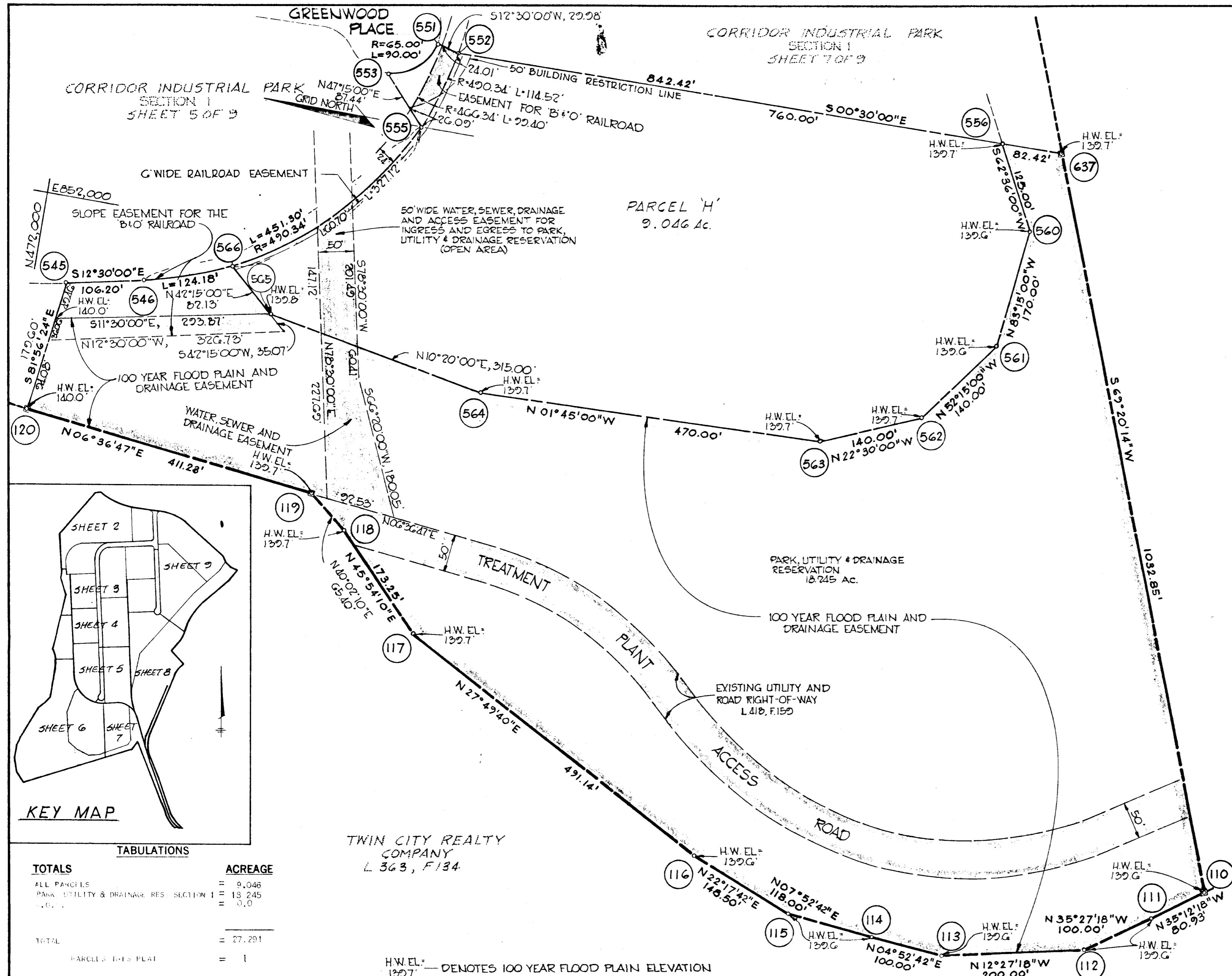
Scale: 1" = 100' Date: 1-31-75

BRUNING 44-512 23127

CURVE DATA						
NO.	RAD.	Δ	L	T	C	L.C.B.
553-551	65.00	79°-19'-57"	90.00	53.90	82.98	S 37°-50'-01" E
546-566	490.34	14°-30'-56"	124.18	62.42	123.85	S 19°-45'-18" E
566-555	490.34	38°-13'-25"	327.12	169.91	321.09	S 46°-07'-18" E
555-546	490.34	52°-44'-01"	451.30	243.05	435.54	N 38°-52'-00" W

NOTES:

1. THE LOTS OR PARCELS SHOWN ON THIS PLAT ARE SUBJECT TO THE SUPPLEMENTAL SEWER IN-AID-OF-CONSTRUCTION CHARGE CREATED BY SECTION 20.311A OF HOWARD COUNTY CODE, AND TO EXECUTIVE ORDER NO. 72-9.
2. AS TO ANY STORM DRAINAGE EASEMENT SHOWN HEREON, THE OWNER OF THE PROPERTY, ITS SUCCESSORS AND ASSIGNS, SHALL BE RESPONSIBLE FOR THE MAINTENANCE THEREOF.
3. A PORTION OF THE EXISTING B.G. & E. POLE LINE AGREEMENT RECORDED AMONG THE LAND RECORDS OF HOWARD COUNTY, MARYLAND IN LIBER 393, FOLIO 467; RUNNING THROUGH PARCELS 'K' & 'S' AND LOTS 1 & 2 OF THIS SUBMISSION IS TO BE ABANDONED.



TOTALS

	ACREAGE
ALL PARCELS	= 9.046
PARK, UTILITY & DRAINAGE RES. SECTION I	= 13.245
...	= 0.0
TOTAL	= 27.291
PARCELS THIS PLAT	= 1

HOWARD COUNTY METROPOLITAN COMMISSION
SAVAGE TREATMENT FACILITY
L 423, F 516

STORM WATER MANAGEMENT FACILITIES ARE REQUIRED AT THE SITE DEVELOPMENT STAGE. THESE FACILITIES ARE TO COMPLY WITH THE CRITERIA SET FORTH IN THE STORM WATER MANAGEMENT PROGRAM APPROVED FOR THIS SUBDIVISION BY THE HOWARD COUNTY DEPARTMENT OF PUBLIC WORKS.

NOTE: FOR DECLARATION ON WATER RESTRICTION REFER TO SHEET 1 OF 9

⊗ DENOTES 4" x 4" CONCRETE MONUMENT

APPROVED: FOR PUBLIC WATER AND PUBLIC SEWERAGE SYSTEMS, HOWARD COUNTY HEALTH DEPARTMENT.

COUNTY HEALTH OFFICER _____ DATE _____

APPROVED: HOWARD COUNTY OFFICE OF PLANNING AND ZONING.

DIRECTOR _____ DATE _____

APPROVED: FOR PUBLIC WATER AND PUBLIC SEWERAGE, STORM DRAINAGE SYSTEMS AND PUBLIC ROADS, HOWARD COUNTY DEPARTMENT OF PUBLIC WORKS.

DIRECTOR _____ DATE _____

SURVEYOR'S CERTIFICATE

I, hereby certify that the Final Plat shown hereon is correct; that it is a subdivision of part of the lands conveyed, By Ephraim Winer, et. al. and Samuel A. Hearn, et. al. to Columbia Industrial Development Corporation deeds dated April 29, 1974 and January 18, 1975, respectively, and recorded in the land records of Howard County, in Liber 678, Folios 749 thru and including 757 and Liber 709, Folios 421 thru and including 425; and that all monuments are in place as shown in accordance with the Annotated Code of Maryland, as amended.

PROFESSIONAL LAND SURVEYOR
(By) DONALD E. FINCH Reg. No. 8651
CENTURY ENGINEERING, INC., TOWSON, MD 21284

DEDICATION FOR CORPORATION

We, Columbia Industrial Development Corporation, a Maryland corporation by Douglas A. McGregor, Vice President and Francis R. Hunter Jr., Assistant Secretary, owner of the property shown and described hereon, hereby adopt this plan of subdivision, and in consideration of the approval of this Final Plat by the Office of Planning and Zoning, establish the minimum building restriction lines; and dedicate the streets, alleys, walkways, and other easements, widening strips and floodplains, and open space where applicable, to public use. All easements, or rights-of-way affecting the property are included in this plan of subdivision. Witness my four hand/s this 31st day of JAN, 1975.

OWNER
(By) Douglas A. McGregor VICE PRES.
Francis R. Hunter Jr. ASS'T. SEC.
COLUMBIA INDUSTRIAL DEVELOPMENT CORPORATION, COLUMBIA, MD 21043

RECORDED IN PLAT BOOK 31 FOLIO 17
on AUGUST 6, 1975 among The
Land Records of Howard County, Maryland.

CORRIDOR INDUSTRIAL PARK
SECTION I

Sheet 6 of 9
6th Election District of Howard County, Md.
Scale: 1" = 100' Date: 1-31-75

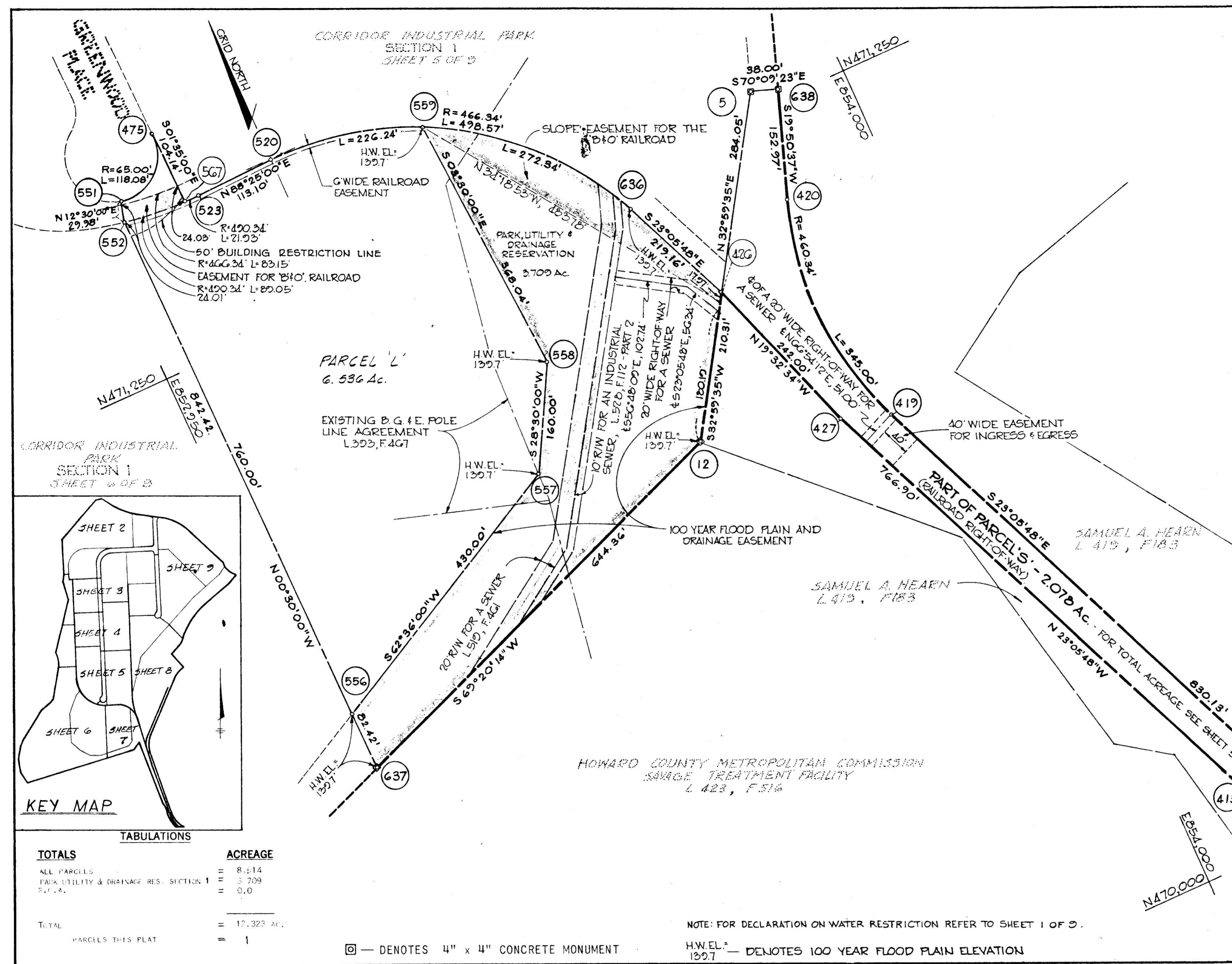
SPRUNG 44-512 23127

F 75-57

CURVE DATA						
NO.	RAD.	Δ	ARC	TAN.	CHORD	L.C.B.
420-419	460.34	42°-56'-25"	345.00	181.06	336.98	S 01°-37'-35" E
409-410	460.34	43°-50'-33"	352.25	185.25	343.72	S 45°-01'-04" E
411-408	496.34	34°-18'-22"	297.18	153.20	292.76	N 40°-14'-58" W
636-520	466.34	61°-15'-21"	498.57	276.10	475.16	N 60°-57'-19" W
636-559	466.34	33°-27'-36"	272.34	140.18	268.48	N 47°-03'-26" W
523-567	490.34	02°-33'-46"	21.93	10.97	21.93	S 89°-41'-53" W
475-551	65.00	104°-05'-00"	118.08	83.32	102.50	S 50°-27'-30" W
410-411	3899.83	01°-16'-54"	87.24	43.62	87.24	N 86°-27'-07" W
520-559	466.34	27°-47'-45"	226.24	115.39	224.02	S 77°-41'-07" E

- NOTES:
1. THE LOTS OR PARCELS SHOWN ON THIS PLAT ARE SUBJECT TO THE SUPPLEMENTAL SEWER IN-AID-OF-CONSTRUCTION CHARGE CREATED BY SECTION 20.311A OF HOWARD COUNTY CODE, AND TO EXECUTIVE ORDER NO. 72-9.
 2. AS TO ANY STORM DRAINAGE EASEMENT SHOWN HEREON, THE OWNER OF THE PROPERTY, ITS SUCCESSORS AND ASSIGNS, SHALL BE RESPONSIBLE FOR THE MAINTENANCE THEREOF.
 3. A PORTION OF THE EXISTING B.G. & E. POLE LINE AGREEMENT RECORDED AMONG THE LAND RECORDS OF HOWARD COUNTY, MARYLAND IN LIBER 393, FOLIO 467; RUNNING THROUGH PARCELS 'K' & 'S' AND LOTS 1 & 2 OF THIS SUBMISSION IS TO BE ABANDONED.

STORM WATER MANAGEMENT FACILITIES ARE REQUIRED AT THE SITE DEVELOPMENT STAGE. THESE FACILITIES ARE TO COMPLY WITH THE CRITERIA SET FORTH IN THE STORM WATER MANAGEMENT PROGRAM APPROVED FOR THIS SUBDIVISION BY THE HOWARD COUNTY DEPARTMENT OF PUBLIC WORKS.



NOTE: FOR DECLARATION ON WATER RESTRICTION REFER TO SHEET 1 OF 9.

HW.E.L. 139.7 — DENOTES 100 YEAR FLOOD PLAIN ELEVATION

TOTALS

	ACREAGE
ALL PARCELS	= 8.214
PARK UTILITY & DRAINAGE RES. SECTION 1	= 3.709
S.T.A.	= 0.0
TOTAL	= 12.323 AC.
PARCELS THIS PLAT	= 1

APPROVED: FOR PUBLIC WATER AND PUBLIC SEWERAGE SYSTEMS, HOWARD COUNTY HEALTH DEPARTMENT.

COUNTY HEALTH OFFICER DATE

APPROVED: HOWARD COUNTY OFFICE OF PLANNING AND ZONING.

DIRECTOR DATE

APPROVED: FOR PUBLIC WATER AND PUBLIC SEWERAGE, STORM DRAINAGE SYSTEMS AND PUBLIC ROADS, HOWARD COUNTY DEPARTMENT OF PUBLIC WORKS.

DIRECTOR DATE

SURVEYOR'S CERTIFICATE

I, hereby certify that the Final Plat shown hereon is correct; that it is a subdivision of part of the lands conveyed, By Ephraim Winer, et. al. and Samuel A. Hearn, et. al. to Columbia Industrial Development Corporation deeds dated April 29, 1974 and January 18, 1975, respectively, and recorded in the land records of Howard County, in Liber 678, Folios 749 thru and including 757 and Liber 709, Folios 421 thru and including 425; and that all monuments are in place as shown in accordance with the Annotated Code of Maryland, as amended.

PROFESSIONAL LAND SURVEYOR

(By) _____ 8657 Reg. No.
DONALD G. FINCH

CENTURY ENGINEERING, INC., TOWSON, MD 21204

DEDICATION FOR CORPORATION

We, Columbia Industrial Development Corporation, a Maryland corporation by Douglas A. McGregor, Vice President and Francis R. Hunter Jr., Assistant Secretary, owner of the property shown and described hereon, hereby adopt this plan of subdivision, and in consideration of the approval of this Final Plat by the Office of Planning and Zoning, establish the minimum building restriction lines; and dedicate the streets, alleys, walkways, and other easements, widening strips and floodplains, and open space where applicable, to public use. All easements, or rights-of-way affecting the property are included in this plan of subdivision. Witness my/our hand/s this 31ST day of Jan. 1975.

OWNER
(By) _____ VICE PRES.
Francis R. Hunter Jr. ASSIST. SEC.

COLUMBIA INDUSTRIAL DEVELOPMENT CORPORATION, COLUMBIA, MD 21043

RECORDED IN PLAT BOOK 31 FOLIO 18
on AUGUST 6, 1975 among The
Land Records of Howard County, Maryland.

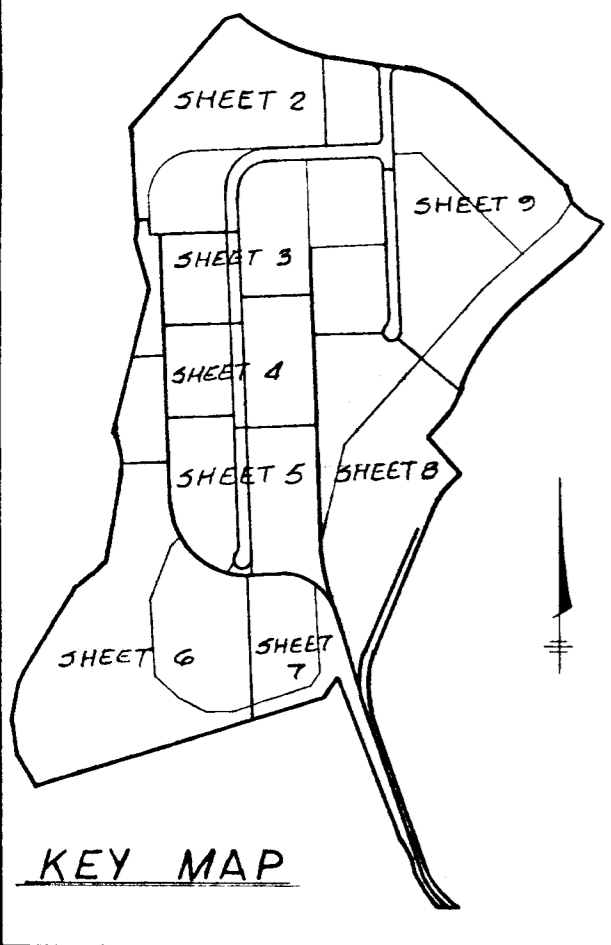
CORRIDOR INDUSTRIAL PARK
SECTION 1

Sheet 7 of 9
6th Election District of Howard County, Md.
Scale: 1" = 100' Date: 1-31-75

BRUNING 44-512 23127

F 75-57

CURVE DATA						
NO.	RADIUS	Δ	ARC	TAN.	CHORD	L.C.B.
361-359	459.46	35°-47'-38"	287.04	148.37	282.39	S 37°-44'-26" W
605-518	466.34	12°-18'-44"	100.21	50.30	100.02	N 07°-44'-22" W
569-607	65.00	122°-00'-33"	138.42	117.28	113.70	S 62°-35'-16" E
649-648	498.34	26°-44'-40"	232.61	118.47	230.51	N 33°-12'-57" E



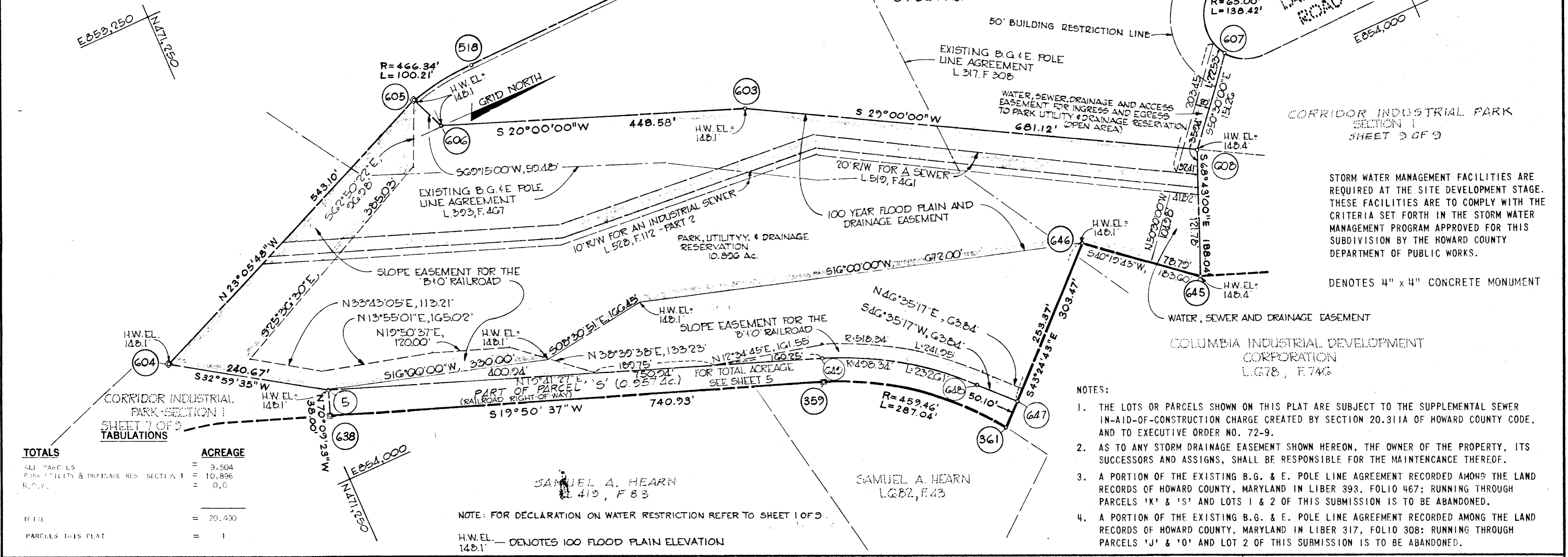
CORRIDOR INDUSTRIAL PARK SECTION I SHEET 5 OF 9

CORRIDOR INDUSTRIAL PARK SECTION I SHEET 4 OF 9

CORRIDOR INDUSTRIAL PARK SECTION I SHEET 3 OF 9

CORRIDOR INDUSTRIAL PARK SECTION I SHEET 2 OF 9

KEY MAP



STORM WATER MANAGEMENT FACILITIES ARE REQUIRED AT THE SITE DEVELOPMENT STAGE. THESE FACILITIES ARE TO COMPLY WITH THE CRITERIA SET FORTH IN THE STORM WATER MANAGEMENT PROGRAM APPROVED FOR THIS SUBDIVISION BY THE HOWARD COUNTY DEPARTMENT OF PUBLIC WORKS.

DNOTES 4" x 4" CONCRETE MONUMENT

TOTALS

	ACREAGE
ALL PARCELS	= 9.504
PARK UTILITY & DRAINAGE RES. SECTION I	= 10.896
R.O.W.	= 0.6
TOTAL	= 20.400
PARCELS THIS PLAT	= 1

- NOTES:
1. THE LOTS OR PARCELS SHOWN ON THIS PLAT ARE SUBJECT TO THE SUPPLEMENTAL SEWER IN-AID-OF-CONSTRUCTION CHARGE CREATED BY SECTION 20.311A OF HOWARD COUNTY CODE, AND TO EXECUTIVE ORDER NO. 72-9.
 2. AS TO ANY STORM DRAINAGE EASEMENT SHOWN HEREON, THE OWNER OF THE PROPERTY, ITS SUCCESSORS AND ASSIGNS, SHALL BE RESPONSIBLE FOR THE MAINTENANCE THEREOF.
 3. A PORTION OF THE EXISTING B.G. & E. POLE LINE AGREEMENT RECORDED AMONG THE LAND RECORDS OF HOWARD COUNTY, MARYLAND IN LIBER 393, FOLIO 467; RUNNING THROUGH PARCELS 'K' & 'S' AND LOTS 1 & 2 OF THIS SUBMISSION IS TO BE ABANDONED.
 4. A PORTION OF THE EXISTING B.G. & E. POLE LINE AGREEMENT RECORDED AMONG THE LAND RECORDS OF HOWARD COUNTY, MARYLAND IN LIBER 317, FOLIO 308; RUNNING THROUGH PARCELS 'J' & 'O' AND LOT 2 OF THIS SUBMISSION IS TO BE ABANDONED.

APPROVED: FOR PUBLIC WATER AND PUBLIC SEWERAGE SYSTEMS, HOWARD COUNTY HEALTH DEPARTMENT.

COUNTY HEALTH OFFICER _____ DATE _____

APPROVED: HOWARD COUNTY OFFICE OF PLANNING AND ZONING.

DIRECTOR _____ DATE _____

APPROVED: FOR PUBLIC WATER AND PUBLIC SEWERAGE, STORM DRAINAGE SYSTEMS AND PUBLIC ROADS, HOWARD COUNTY DEPARTMENT OF PUBLIC WORKS.

DIRECTOR _____ DATE _____

SURVEYOR'S CERTIFICATE

I, hereby certify that the Final Plat shown hereon is correct; that it is a subdivision of part of the lands conveyed, By Ephraim Winer, et. al. and Samuel A. Hearn, et. al. to Columbia Industrial Development Corporation deeds dated April 29, 1974 and January 18, 1975, respectively, and recorded in the land records of Howard County, in Liber 678, Folios 749 thru and including 757 and Liber 709, Folios 421 thru and including 425; and that all monuments are in place as shown in accordance with the Annotated Code of Maryland, as amended.

PROFESSIONAL LAND SURVEYOR

(By) _____ Reg. No. _____

DONALD E. FINCH

CENTURY ENGINEERING, INC., TOWSON, MD 21204

DEDICATION FOR CORPORATION

We, Columbia Industrial Development Corporation, a Maryland corporation by Douglas A. McGregor, Vice President and Francis R. Hunter Jr., Assistant Secretary, owner of the property shown and described hereon, hereby adopt this plan of subdivision, and in consideration of the approval of this Final Plat by the Office of Planning and Zoning, establish the minimum building restriction lines; and dedicate the streets, alleys, walkways, and other easements, widening strips and floodplains, and open space where applicable, to public use. All easements, or rights-of-way affecting the property are included in this plan of subdivision. Witness my/our hands this 31ST day of JAN, 1975.

OWNER

(By) _____ VICE PRES.

COLUMBIA INDUSTRIAL DEVELOPMENT CORPORATION, COLUMBIA, MD 21043

RECORDED IN PLAT BOOK 31 FOLIO 19

on AUGUST 6, 1975 among The Land Records of Howard County, Maryland.

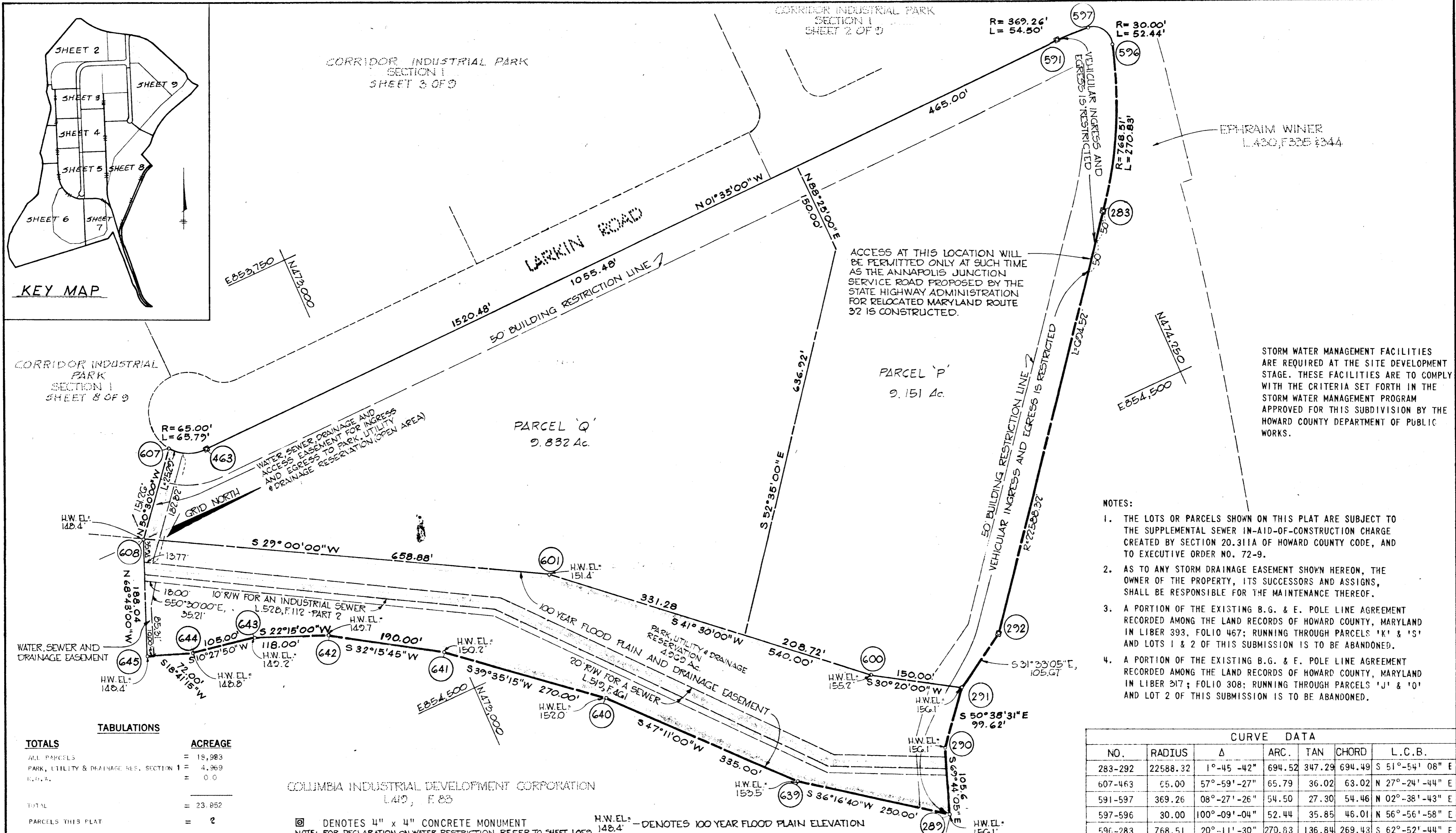
CORRIDOR INDUSTRIAL PARK SECTION I

Sheet 8 of 9

6th Election District of Howard County, Md.

Scale: 1" = 100' Date: 1-31-75

BRUNING 44-512 23127



KEY MAP

CORRIDOR INDUSTRIAL PARK SECTION I SHEET 3 OF 9

TOTALS

	ACREAGE
ALL PARCELS	= 15,983
PARK, UTILITY & DRAINAGE RES. SECTION I	= 4,969
E.P.A.	= 0.0
TOTAL	= 23,852
PARCELS THIS PLAT	= 2

- NOTES:**
1. THE LOTS OR PARCELS SHOWN ON THIS PLAT ARE SUBJECT TO THE SUPPLEMENTAL SEWER IN-AID-OF-CONSTRUCTION CHARGE CREATED BY SECTION 20.311A OF HOWARD COUNTY CODE, AND TO EXECUTIVE ORDER NO. 72-9.
 2. AS TO ANY STORM DRAINAGE EASEMENT SHOWN HEREON, THE OWNER OF THE PROPERTY, ITS SUCCESSORS AND ASSIGNS, SHALL BE RESPONSIBLE FOR THE MAINTENANCE THEREOF.
 3. A PORTION OF THE EXISTING B.G. & E. POLE LINE AGREEMENT RECORDED AMONG THE LAND RECORDS OF HOWARD COUNTY, MARYLAND IN LIBER 393, FOLIO 467; RUNNING THROUGH PARCELS 'K' & 'S' AND LOTS 1 & 2 OF THIS SUBMISSION IS TO BE ABANDONED.
 4. A PORTION OF THE EXISTING B.G. & E. POLE LINE AGREEMENT RECORDED AMONG THE LAND RECORDS OF HOWARD COUNTY, MARYLAND IN LIBER 317; FOLIO 308; RUNNING THROUGH PARCELS 'J' & 'O' AND LOT 2 OF THIS SUBMISSION IS TO BE ABANDONED.

CURVE DATA

NO.	RADIUS	Δ	ARC.	TAN	CHORD	L.C.B.
283-292	22588.32	1°-45'-42"	694.52	347.29	694.49	S 51°-54'-08" E
607-463	65.00	57°-59'-27"	65.79	36.02	63.02	N 27°-24'-44" E
591-597	369.26	08°-27'-26"	54.50	27.30	54.46	N 02°-38'-43" E
597-596	30.00	100°-09'-04"	52.44	35.85	46.01	N 56°-56'-58" E
596-283	768.51	20°-11'-30"	270.83	136.84	269.43	S 62°-52'-44" E

APPROVED: FOR PUBLIC WATER AND PUBLIC SEWERAGE SYSTEMS, HOWARD COUNTY HEALTH DEPARTMENT.

COUNTY HEALTH OFFICER _____ DATE _____

APPROVED: HOWARD COUNTY OFFICE OF PLANNING AND ZONING.

DIRECTOR _____ DATE _____

APPROVED: FOR PUBLIC WATER AND PUBLIC SEWERAGE, STORM DRAINAGE SYSTEMS AND PUBLIC ROADS. HOWARD COUNTY DEPARTMENT OF PUBLIC WORKS.

DIRECTOR _____ DATE _____

SURVEYOR'S CERTIFICATE

I, hereby certify that the Final Plat shown hereon is correct; that it is a subdivision of part of the lands conveyed, By Ephraim Winer, et. al. and Samuel A. Hearn, et. al. to Columbia Industrial Development Corporation deeds dated April 29, 1974 and January 18, 1975, respectively, and recorded in the land records of Howard County, in Liber 676, Folios 749 thru and including 757 and Liber 709, Folios 421 thru and including 425; and that all monuments are in place as shown in accordance with the Annotated Code of Maryland, as amended.

PROFESSIONAL LAND SURVEYOR

(By) DONALD E. FINCH Reg. No. 2057

CENTURY ENGINEERING, INC., TOWSON, MD 21204

DEDICATION FOR CORPORATION

We, Columbia Industrial Development Corporation, a Maryland corporation by Douglas A. McGregor, Vice President and Francis R. Hunter Jr., Assistant Secretary, owner of the property shown and described hereon, hereby adopt this plan of subdivision, and in consideration of the approval of this Final Plat by the Office of Planning and Zoning, establish the minimum building restriction lines; and dedicate the streets, alleys, walkways, and other easements, widening strips and floodplains, and open space where applicable, to public use. All easements, or rights-of-way affecting the property are included in this plan of subdivision. Witness my/our hand/s this 21st day of JAN. 1975.

OWNER

(By) _____ VICE PRES. _____ ASS'T. SEC.

COLUMBIA INDUSTRIAL DEVELOPMENT CORPORATION, COLUMBIA, MD. 21043

RECORDED IN PLAT BOOK 31 FOLIO 20

on AUGUST 6, 1975 among The Land Records of Howard County, Maryland.

CORRIDOR INDUSTRIAL PARK SECTION I

Sheet 9 of 9

6th Election District of Howard County, Md.

Scale: 1" = 100' Date: 1-31-75

DRAWING 44-512 23127

F 75-87