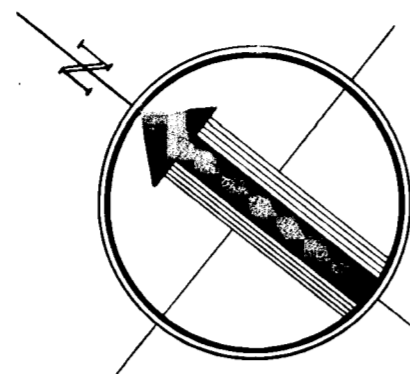


COORDINATES

No.	NORTH	EAST
46	83057.83	46740.43
47	83010.77	46680.75
48	83102.07	46608.76
49	83156.73	46538.57
50	83024.30	46421.81
51	82789.19	46312.35
60	82831.67	46918.75
61	82493.16	47045.12
62	82477.10	47045.88
63	82321.08	46422.69

Note: Meridian and coordinates are based on Washington Suburban Sanitary Commission coordinate system.



DENSITY TABULATIONS			
SECTION	ACRES (NET)	UNITS ALLOWED	UNITS PROVIDED
ONE	20.0967	312	304
TWO AREA ONE	6.8804	107	96
TWO AREA TWO	9.0307	140	126
THREE	17.0841	265	256
TOTALS	53.0919	824	782

OWNER'S CERTIFICATE

We, Whiskey Bottom Condominiums, Inc. a Maryland Corporation by Wallace F. Holladay, President and Benjamin R. Jacobs, Secretary, owners of the property shown and described hereon, adopt this plan of subdivision and establish for public use the easements shown hereon for the purposes indicated.

May 21, 1973
DATE

Whiskey Bottom Condominiums, Inc.

Attest: Benjamin R. Jacobs By: Wallace F. Holladay
BENJAMIN R. JACOBS, SECRETARY WALLACE F. HOLLADAY, PRESIDENT

Total area included in this plan 9.0307 Acres

APPROVED: FOR PUBLIC WATER AND PUBLIC SEWERAGE SYSTEMS.
HOWARD COUNTY HEALTH DEPARTMENT

APPROVED:
HOWARD COUNTY OFFICE OF PLANNING AND ZONING

APPROVED: FOR PUBLIC WATER, PUBLIC SEWERAGE, STORM DRAINAGE SYSTEMS AND PUBLIC ROADS.
HOWARD COUNTY DEPARTMENT OF PUBLIC WORKS

We hereby assent to this plan of subdivision

Donald W. Hall Herbert A. Haller
WITNESS HERBERT A. HALLER, TRUSTEE

Donald W. Hall Frederick S. Genau
WITNESS FREDERICK S. GENAU, TRUSTEE

Donald W. Hall Richard Williams
WITNESS RICHARD WILLIAMS, TRUSTEE

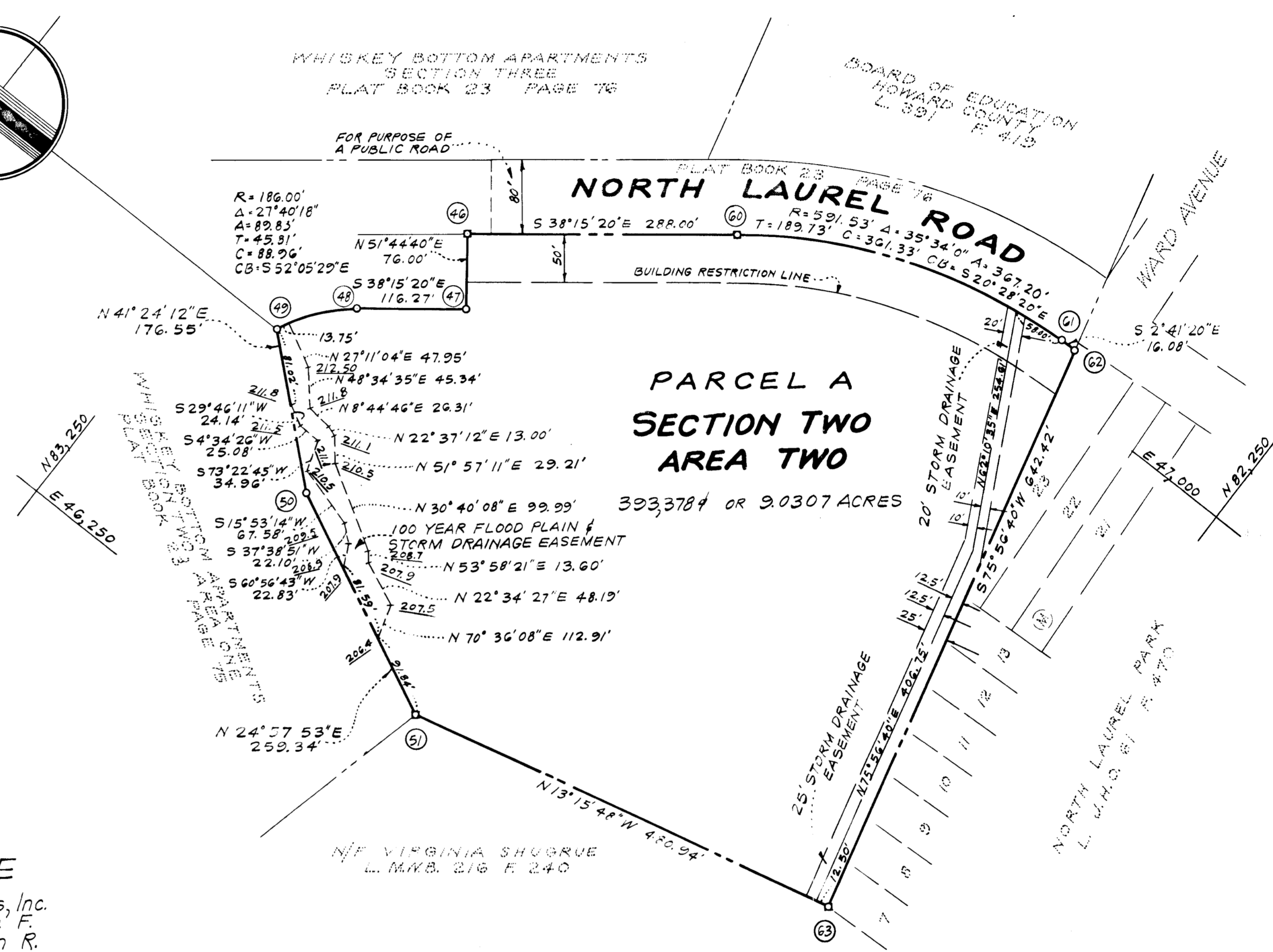
SURVEYOR'S CERTIFICATE

I hereby certify that the plan shown hereon is correct, that it is a Subdivision of all of the land which by deed dated May 1, 1973, and recorded among the Land Records of Howard County, Maryland in Liber CMP 635 at Folio 104 was granted and conveyed by I-95 Enterprises, a Limited Partnership to Whiskey Bottom Condominiums, Inc., a Maryland Corporation, and that stones and/or monuments marked thus \square are in place as shown.

I further certify that the requirements of Article 21, Section 3-108 of the Annotated Code of Maryland (as amended) as far as they relate to the making of this plat have been complied with.

May 21, 1973
DATE

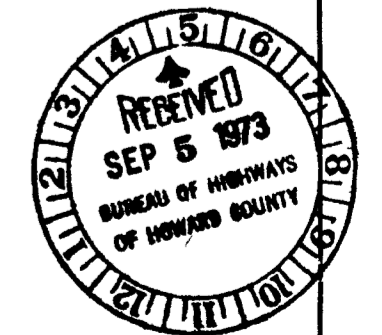
Jerome J. Norris
JEROME J. NORRIS
REGISTERED LAND SURVEYOR
MARYLAND #24607



SECTION TWO - AREA TWO
WHISKEY BOTTOM APARTMENTS

SIXTH ELECTION DISTRICT
HOWARD COUNTY, MARYLAND
SCALE: 1"=100' JUNE 15, 1973

JEROME J. NORRIS & ASSOCS.
LAND PLANNING - HOUSING CONSULTANTS
6001 32ND STREET, N.W.
WASHINGTON, D.C.



PLATBOOK 25 FOLIO 92

AUG 29 72