

# COLUMBIA

ALL COORDINATES ARE BASED ON THE MARYLAND STATE GRID SYSTEM

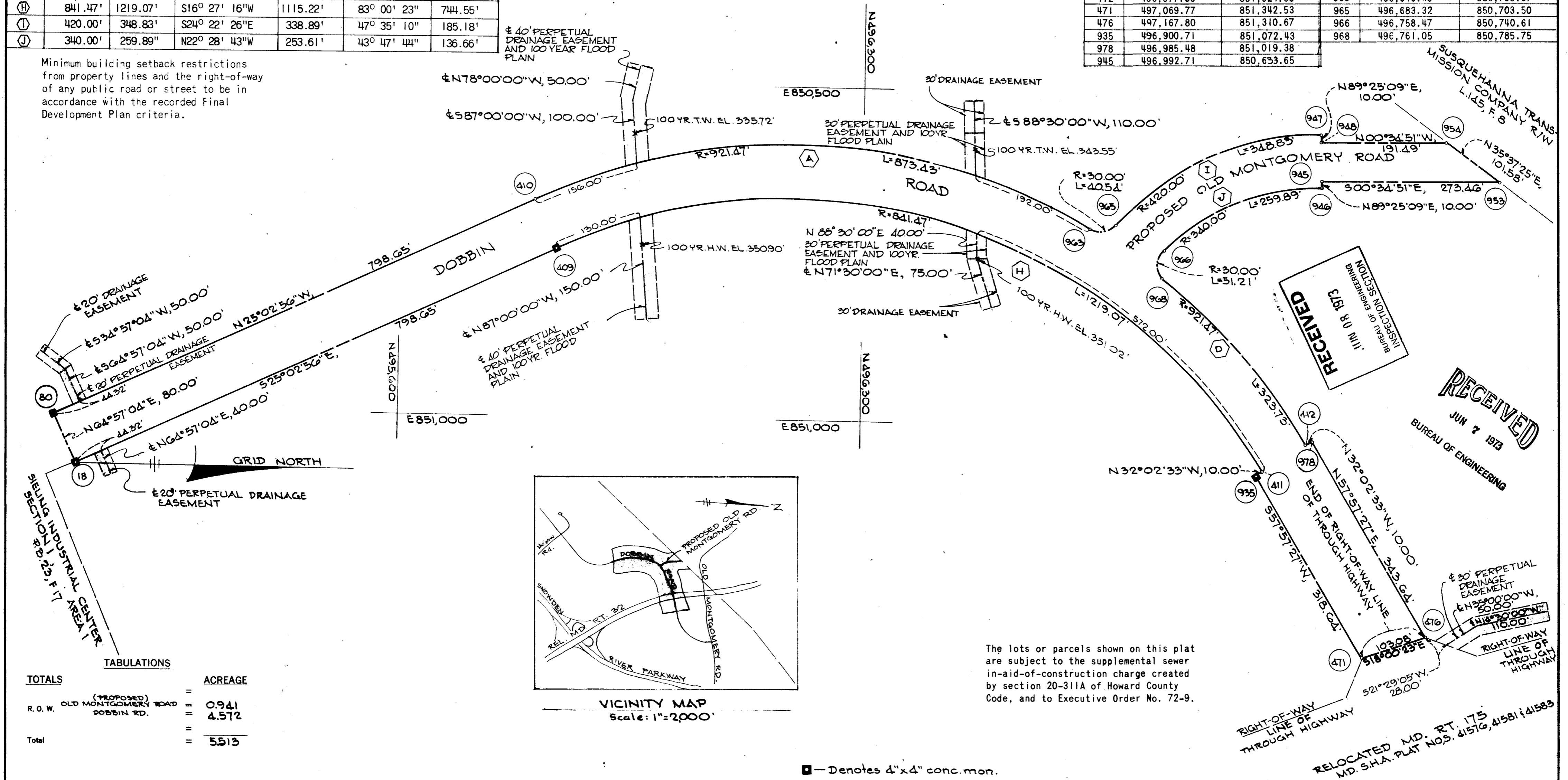
### CURVE DATA

NO.	RADIUS	LENGTH	CHD. BEARING	DISTANCE	TANGENT
(A)	921.47'	873.43'	N02° 06' 22"E	841.10'	54° 18' 31"
(B)	30.00'	40.54'	S09° 27' 12"E	37.53'	77° 25' 38"
(C)	30.00'	51.21'	S86° 43' 35"W	45.21'	97° 47' 41"
(D)	921.47'	323.73'	S47° 53' 34"W	322.06'	20° 07' 44"
(H)	841.47'	1219.07'	S16° 27' 16"W	1115.22'	83° 00' 23"
(I)	420.00'	348.83'	S24° 22' 26"E	338.89'	47° 35' 10"
(J)	340.00'	259.89'	N22° 28' 43"W	253.61'	43° 47' 44"

### COORDINATES

NO.	NORTH	EAST	NO.	NORTH	EAST
18	495,116.11	851,089.38	946	496,992.81	850,643.65
80	495,082.24	851,016.90	947	496,992.00	850,563.65
409	495,839.64	850,751.24	948	496,992.10	850,573.65
410	495,805.77	850,678.76	953	497,266.15	850,630.87
411	496,909.19	851,067.13	954	497,183.58	850,571.71
412	496,977.00	851,024.68	963	496,646.30	850,709.67
471	497,069.77	851,342.53	965	496,683.32	850,703.50
476	497,167.80	851,310.67	966	496,758.47	850,740.61
935	496,900.71	851,072.43	968	496,761.05	850,785.75
978	496,985.48	851,019.38			
945	496,992.71	850,633.65			

Minimum building setback restrictions from property lines and the right-of-way of any public road or street to be in accordance with the recorded Final Development Plan criteria.



### TOTALS

	ACREAGE
R.O.W. OLD MONTGOMERY ROAD	0.941
(PROPOSED) DOBBIN RD.	4.572
<b>Total</b>	<b>5.513</b>

The lots or parcels shown on this plat are subject to the supplemental sewer in-aid-of-construction charge created by section 20-311A of Howard County Code, and to Executive Order No. 72-9.

□ - Denotes 4"x4" conc. mon.

### SURVEYOR'S, ENGINEER'S and OWNER'S CERTIFICATES

The undersigned, owner of the property shown on this Plat, grants unto, (1) Howard County, Maryland, its successors and assigns, the right to lay, construct and maintain water and sewer mains and laterals therefor in and under all road and street rights-of-way as shown hereon; (2) further it adopts this plan of subdivision and reserves the fee simple title to the beds of the streets and/or roads hereon, except however, for one dollar consideration, it herewith grants the right and option to Howard County, Maryland to acquire (within a period of five years commencing with the date of recording of this plat among the Land Records of Howard County) the fee simple title to the beds of the streets and/or roads shown hereon, together with such adjacent land, if any, as may be shown on this plat as areas designated for the installation of street lighting facilities. Further it grants unto Howard County, Maryland to enter upon, maintain and construct storm drain facilities contained in the perpetual drainage easements shown herein.

The undersigned certify that the subdivision plan shown hereon is correct as complying with the requirements of Final Development Plan Phase 134 recorded in Plat Book 20, Folios 237 to 242, each inclusive, with all Open Space shown thereon to be used for drainage easements, if necessary, and the requirements of Article 21, Sect. 3-10B of the annotated code of Maryland concerning the making of this Plat and setting of markers have been complied with. The land shown hereon is a part of the land which by deed dated December 13, 1966 and recorded among the Land Records of Howard County, Maryland in Liber 463 Folio 196, was granted and conveyed by C. Aileen Ames to The Howard Research and Development Corporation.

PROFESSIONAL LAND SURVEYOR  
 (By) *George Chas. Green* 29  
 GREEN ASSOCIATES, INC. Reg. No.  
 BALTIMORE, MARYLAND 21204

PROFESSIONAL ENGINEER  
 (By) *Robert P. Green* 5407  
 GREEN ASSOCIATES, INC. Reg. No.  
 BALTIMORE, MARYLAND 21204

OWNER  
 (By) *John Francis Gurdley*  
 THE HOWARD RESEARCH AND DEVELOPMENT CORP. Auth. Agent  
 COLUMBIA, MARYLAND 21044

RECORDED IN PLAT BOOK 25 FOLIO 40  
 on MAY 31, 1973 among The  
 Land Records of Howard County, Maryland.

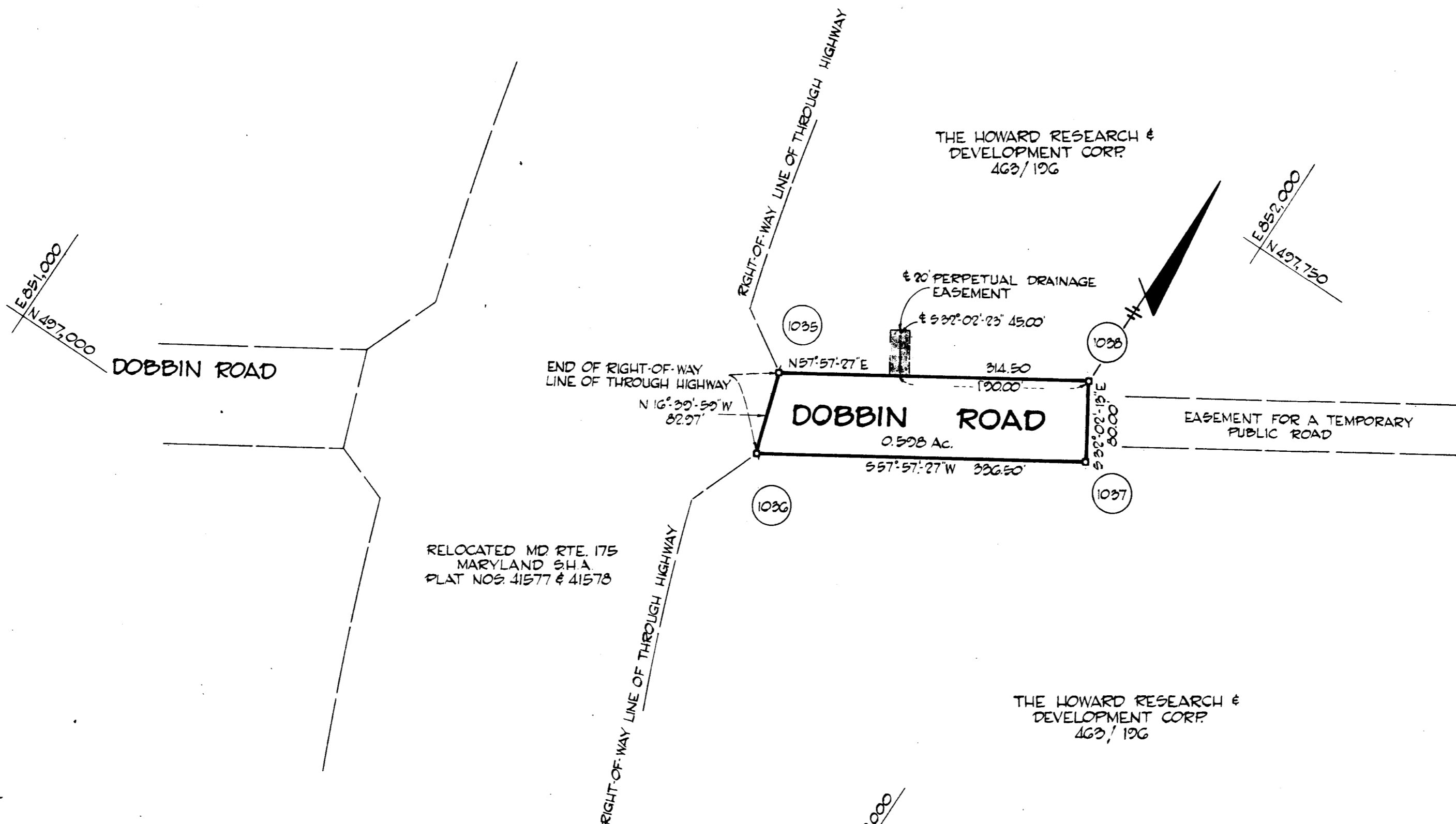
**COLUMBIA**  
 DOBBIN ROAD FROM RELOCATED MD. ROUTE 175 TO A POINT 2388± SOUTH AND PROPOSED OLD MONTGOMERY ROAD FROM DOBBIN ROAD TO A POINT 540± EAST.

Sheet 1 of 2  
 City Election District of Howard County, Md.  
 Scale: 1" = 100' Date: May 31, 1973

# COLUMBIA

ALL COORDINATES ARE BASED ON THE MARYLAND STATE GRID SYSTEM

COORDINATES		
NO.	NORTH	EAST
1035	497,377.11	851,663.94
1036	497,297.63	851,687.73
1037	497,476.15	851,972.97
1038	497,543.97	851,930.52



RECEIVED  
JUN 7 1973  
BUREAU OF ENGINEERING

□ DENOTES 4x4 CONCRETE MONUMENT

TABULATIONS	
TOTALS	ACREAGE
All lots	=
R. O. W.	= 0.598
Open Space	=
Total	= 0.598
Lots this plat (incl. open space)	= 1

THE LOTS OR PARCELS SHOWN ON THIS PLAT ARE SUBJECT TO THE SUPPLEMENTAL SEWER IN-AID-OF-CONSTRUCTION CHARGE CREATED BY SECTION 20-211A OF HOWARD COUNTY CODE, AND TO EXECUTIVE ORDER NO. 72-2.

MINIMUM BUILDING SETBACK RESTRICTIONS FROM PROPERTY LINES AND THE RIGHT-OF-WAY OF ANY PUBLIC ROAD OR STREET TO BE IN ACCORDANCE WITH THE RECORDED FINAL DEVELOPMENT PLAN CRITERIA.

APPROVED: FOR PUBLIC WATER AND PUBLIC SEWERAGE SYSTEMS, HOWARD COUNTY HEALTH DEPARTMENT.  
*[Signature]* 5/21/73  
COUNTY HEALTH OFFICER DATE

APPROVED: HOWARD COUNTY OFFICE OF PLANNING AND ZONING.  
*[Signature]* 5-31-73  
DIRECTOR DATE

APPROVED: FOR PUBLIC WATER AND PUBLIC SEWERAGE, STORM DRAINAGE SYSTEMS AND PUBLIC ROADS. HOWARD COUNTY DEPARTMENT OF PUBLIC WORKS.  
*[Signature]* 5/31/73  
DIRECTOR DATE

SURVEYOR'S, ENGINEER'S and OWNER'S CERTIFICATES

The undersigned, owner of the property shown on this Plat, grants unto, (1) Howard County, Maryland, its successors and assigns, the right to lay, construct and maintain water and sewer mains and laterals therefor in and under all road and street rights-of-way as shown hereon; (2) further it adopts this plan of subdivision and reserves the fee simple title to the beds of the streets and/or roads hereon, except however, for one dollar consideration, it herewith grants the right and option to Howard County, Maryland to acquire (within a period of five years, commencing with the date of recording of this plat among the Land Records of Howard County) the fee simple title to the beds of the streets and/or roads shown hereon, together with such adjacent land, if any, as may be shown on this plat as areas designated for the installation of street lighting facilities. (3) Further it grants unto Howard County, Maryland to enter upon, maintain and construct storm drain facilities contained in the perpetual drainage easements shown hereon.

The undersigned certify that the subdivision plan shown hereon is correct as complying with the requirements of Final Development Plan Phase 109 recorded in Plat Book 20, Folios 141 to 142, each inclusive, with all Open Space shown thereon to be used for drainage easements, if necessary, and the requirements of Article 21, Sec. 3-106 of the annotated code of Maryland concerning the making of this Plat and setting of markers have been complied with. The land shown hereon is a part of the land which by deed dated December 13, 1966 and recorded among the Land Records of Howard County, Maryland in Liber 443 Folio 196 was granted and conveyed by C. Aileen Ames to The Howard Research and Development Corporation.

PROPERTY SURVEYOR: *[Signature]* 29 Reg. No. GREEN ASSOCIATES, INC. TOWSON, MARYLAND 21207

PROFESSIONAL ENGINEER: *[Signature]* 5407 Reg. No. GREEN ASSOCIATES, INC. TOWSON, MARYLAND 21207

OWNER: *[Signature]* THE HOWARD RESEARCH AND DEVELOPMENT CORP. COLUMBIA, MARYLAND 21044

RECORDED IN PLAT BOOK 25 FOLIO 41  
on MAY 31, 1973 among The  
Land Records of Howard County, Maryland.

COLUMBIA  
DOBBIN ROAD FROM RELOCATED  
MD. ROUTE 175 TO A POINT 2388± SOUTH  
AND PROPOSED OLD MONTGOMERY ROAD  
FROM DOBBIN ROAD TO A POINT 540± EAST

Sheet 1 of 1  
6<sup>TH</sup> Election District of Howard County, Md.  
Scale: 1" = 100' Date: MAY 31, 1973