

COLUMBIA

ALL COORDINATES ARE BASED ON THE MARYLAND STATE GRID SYSTEM

COORDINATE SCHEDULE

NO.	NORTH	EAST	NO.	NORTH	EAST	NO.	NORTH	EAST
8	495,075.53	844,060.61	396	494,840.24	843,979.30			
9	495,078.9	844,101.0	397	494,849.16	844,035.16			
10	495,164.87	844,073.69	401	494,985.82	843,972.41			
11	495,173.75	844,122.89	402	495,022.36	843,964.26			
12	495,320.96	844,101.39	406	494,939.83	844,022.53			
13	495,288.70	844,147.87	407	494,968.28	844,043.15			
14	495,248.35	844,155.15	409	495,039.32	844,072.93			
17	495,203.83	844,129.93	411	495,004.41	844,078.50			
18	495,87.14	844,120.48	414	495,067.25	844,051.42			
19	495,30.24	843,992.16	415	495,060.41	843,998.43			
20	495,254.76	843,959.91	424	494,701.18	843,641.86			
21	495,214.42	843,967.19	425	494,596.86	843,660.70			
22	495,182.16	844,013.66	426	494,668.92	843,688.33			
23	495,89.45	844,034.01	427	494,643.33	843,692.95			
24	495,177.35	844,071.44	431	494,678.21	843,514.67			
26	494,975.07	844,118.99	432	494,675.73	843,486.26			
79	495,108.05	843,733.79	434	494,573.77	843,532.79			
80	495,058.84	843,742.68	448	495,063.69	843,213.19			
81	495,037.24	843,733.82	449	495,019.73	843,189.37			
82	495,039.82	843,721.72	450	495,024.67	843,285.18			
83	494,989.63	843,730.78	451	494,980.71	843,261.35			
84	494,943.16	843,698.53	462	494,696.89	843,226.34			
85	494,935.87	843,658.18	463	494,664.63	843,272.81			
86	494,968.13	843,611.71	464	494,680.80	843,362.36			
87	495,057.68	843,595.54	465	494,727.27	843,394.62			
88	495,104.15	843,627.80	466	494,737.23	843,219.06			
89	495,111.44	843,668.15	467	494,783.70	843,251.31			
92	495,105.58	843,697.10	471	494,803.33	843,360.00			
93	495,103.38	843,707.96	472	494,838.67	843,378.14			
100	494,934.59	844,089.64	482	494,745.76	843,391.28			
101	494,899.59	844,095.16	484	494,752.19	843,414.74			
102	494,980.64	844,153.90	490	495,154.14	843,319.67			
121	494,873.79	843,826.39	492	495,107.67	843,287.41			
125	494,837.09	843,751.72	493	495,161.43	843,360.02			
126	494,805.13	843,608.46	495	495,129.17	843,406.49			
127	494,816.56	843,671.77	496	495,069.14	843,417.32			
129	494,874.73	843,543.72	497	495,022.67	843,385.07			
130	494,822.46	843,670.70	501	495,313.54	844,395.15			
133	495,036.77	843,514.47	502	495,466.11	844,184.61			
153	495,102.61	843,543.27	503	495,287.76	843,609.06			
165	494,848.69	843,866.25	504	495,278.13	842,957.68			
166	494,870.22	844,050.42	505	495,164.12	842,658.67			
167	494,926.08	844,041.50	506	494,900.94	842,652.93			
190	494,514.84	843,448.59	507	494,879.86	843,072.40			
191	494,544.28	843,469.81	511	495,018.65	843,362.81			
192	494,577.35	843,463.53	512	494,976.45	843,349.49			
193	494,553.61	843,518.93	514	495,065.55	843,295.02			
194	494,586.68	843,512.66	515	495,039.13	843,258.50			
196	494,533.99	843,549.47	540	495,286.30	843,510.10			
197	494,890.38	843,551.80	541	494,883.86	843,594.25			
199	494,914.27	843,395.73	542	494,859.58	843,747.66			
200	495,043.34	843,042.17	543	494,767.40	843,978.43			
204	495,133.58	842,861.02	544	495,279.19	843,029.33			
205	495,153.31	842,970.26	545	495,089.67	843,144.84			
206	495,121.05	843,016.73	638	494,902.91	844,097.57			
207	495,114.83	843,017.85	640	494,511.45	843,220.17			
208	495,094.50	843,045.76	643	494,550.38	843,070.75			
209	495,014.51	842,882.52	644	494,870.17	843,988.01			
210	495,046.77	842,836.05	645	494,827.64	843,896.99			
211	495,087.11	842,828.77	646	494,779.27	843,926.03			
25B	495,220.05	843,121.30	647	494,794.32	843,941.28			
261	495,203.84	843,042.57	688	495,063.69	843,213.19			
395	494,926.03	843,929.09						

SHEETS 1 THRU 4

TABULATIONS

TOTALS	ACREAGE
All lots =	176.80
R. O. W. =	4.689
Total =	22.365
Total Residential Lots =	192
Total Lots (Inc. Community Owned) =	200

RECEIVED
APR 10 1973
BUREAU OF ENGINEERING

RECEIVED
APR 17 1973
BU. ENG. OF ENGINEERING
INSPECTION SECTION

FSP
6/13

APPROVED: FOR PUBLIC WATER AND PUBLIC SEWERAGE SYSTEMS, HOWARD COUNTY HEALTH DEPARTMENT.

[Signature] 3/27/73
COUNTY HEALTH OFFICER DATE

APPROVED: HOWARD COUNTY OFFICE OF PLANNING AND ZONING.

[Signature] 3-28-73
DIRECTOR DATE

APPROVED: FOR PUBLIC WATER AND PUBLIC SEWERAGE, STORM DRAINAGE SYSTEMS AND PUBLIC ROADS. HOWARD COUNTY DEPARTMENT OF PUBLIC WORKS.

[Signature] 3/23/73
DIRECTOR DATE

SURVEYOR'S, ENGINEER'S and OWNER'S CERTIFICATES

The undersigned, owner of the property shown on this Plat, grants unto, (1) Howard County, Maryland, its successors and assigns, the right to lay, construct and maintain water and sewer mains and laterals therefor in and under all road and street rights-of-way as shown hereon; (2) further it adopts this plan of subdivision and reserves the fee simple title to the beds of the streets and/or roads hereon, except however, for one dollar consideration, it herewith grants the right and option to Howard County, Maryland to acquire (within a period of five years commencing with the date of recording of this plat among the Land Records of Howard County) the fee simple title to the beds of the streets and/or roads shown hereon, together with such adjacent land, if any, as may be shown on this plat as areas designated for the installation of street lighting facilities.

The undersigned certify that the subdivision plan shown hereon is correct as complying with the requirements of Final Development Plan Phase 113 recorded in Plat Book 20 Folios 110 to 121, each inclusive, with all Open Space shown thereon to be used for drainage easements, if necessary, and the requirements of Article 17, Section 60 of the annotated code of Maryland concerning the making of this Plat and setting of markers have been complied with. The land shown hereon is a part of the land which by deed dated May 31, 1972 and recorded among the Land Records of Howard County, Maryland in Liber 594 Folio 736, was granted and conveyed by The Howard Research and Development Corporation to Howard Homes Inc.

PROFESSIONAL LAND SURVEYOR: *[Signature]* 1974
Whitman Requardt & Associates Reg. No. 2 W. Preston St. Baltimore, Md. 21201

PROFESSIONAL ENGINEER: *[Signature]* 1974
Whitman Requardt & Associates Reg. No. 2 W. Preston St. Baltimore, Md. 21201

OWNER: *[Signature]*
Howard Homes, Inc. Auth. Agent
Columbia Md. 21043 P.O. Box 802

RECORDED IN PLAT BOOK 20 FOLIO 110
on March 29, 1973 among The
Land Records of Howard County, Maryland.

COLUMBIA

VILLAGE OF OWEN BROWL
LOTS A-1 TO A-200
A RESUBDIVISION OF PARCEL "A"

SECTION 1

AREA 1

Sheet 1 of 4

Gth Election District of Howard County, Md.

Scale: 1" = 100' Date: September 9, 1972

NOTES:

- 4" x 4" x 3/16" Concrete monuments shown thus ■.
- Townhouse lots shall have access across common lots A-193 thru A-200 to public streets.

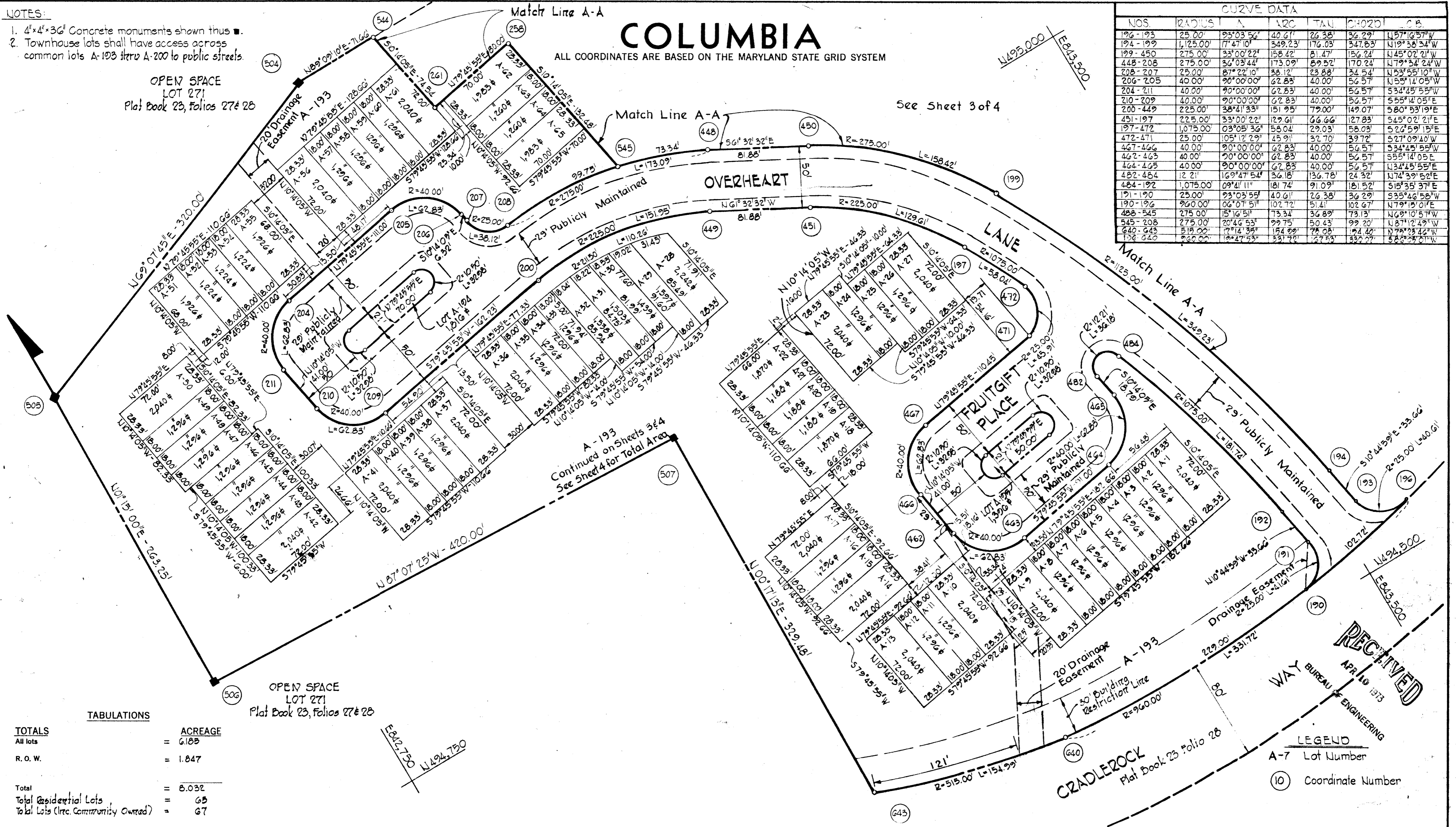
OPEN SPACE
LOT 271
Plat Book 23, Folios 27 & 28

COLUMBIA

ALL COORDINATES ARE BASED ON THE MARYLAND STATE GRID SYSTEM

CURVE DATA

NOS.	RADIUS	Δ	ARC	TAN	CHORD	CB
196-193	25.00'	93°03'56"	40.61'	26.38'	36.29'	1157°10'57"W
194-199	1,125.00'	77°47'10"	349.23'	176.03'	347.63'	119°38'34"W
199-450	275.00'	33°00'22"	158.42'	81.47'	156.24'	145°02'21"W
448-208	275.00'	33°00'22"	158.42'	81.47'	156.24'	179°34'24"W
208-207	25.00'	87°22'10"	38.12'	23.88'	34.54'	153°55'10"W
206-205	40.00'	90°00'00"	42.83'	40.00'	56.57'	155°14'05"W
204-211	40.00'	90°00'00"	42.83'	40.00'	56.57'	53°48'55"W
210-209	40.00'	90°00'00"	42.83'	40.00'	56.57'	555°14'05"E
200-449	225.00'	38°41'33"	151.95'	79.00'	149.07'	580°53'19"E
451-197	225.00'	33°00'22"	129.61'	66.66'	127.83'	545°02'21"E
197-472	1,075.00'	03°05'36"	58.04'	29.03'	58.03'	52°05'15"E
472-471	25.00'	105°12'29"	45.91'	32.70'	39.72'	527°09'40"W
467-466	40.00'	90°00'00"	42.83'	40.00'	56.57'	534°45'55"W
462-463	40.00'	90°00'00"	42.83'	40.00'	56.57'	555°14'05"E
464-465	40.00'	90°00'00"	42.83'	40.00'	56.57'	134°45'55"E
462-464	12.21'	169°47'54"	36.18'	136.78'	24.32'	117°39'52"E
464-192	1,075.00'	03°05'36"	58.04'	29.03'	58.03'	518°35'15"E
191-190	25.00'	93°03'56"	40.61'	26.38'	36.29'	535°46'58"W
190-196	960.00'	06°07'51"	102.72'	51.41'	102.67'	179°18'01"E
468-545	275.00'	15°16'51"	13.34'	36.89'	73.13'	146°10'57"W
545-208	275.00'	20°46'53"	99.75'	50.43'	99.20'	137°12'49"W
640-643	518.00'	17°14'35"	184.89'	78.68'	174.40'	178°28'22"W
136-640	960.00'	10°47'53"	331.96'	127.53'	332.27'	528°38'21"W



TABULATIONS

TOTALS	ACREAGE
All lots	= 6.188
R.O.W.	= 1.847
Total	= 8.032
Total Residential Lots	= 65
Total Lots (Inc. Community Owned)	= 67

APPROVED: FOR PUBLIC WATER AND PUBLIC SEWERAGE SYSTEMS, HOWARD COUNTY HEALTH DEPARTMENT.
 COUNTY HEALTH OFFICER: [Signature] DATE: 3/27/73
 APPROVED: HOWARD COUNTY OFFICE OF PLANNING AND ZONING.
 DIRECTOR: [Signature] DATE: 3-28-73
 APPROVED: FOR PUBLIC WATER AND PUBLIC SEWERAGE, STORM DRAINAGE SYSTEMS AND PUBLIC ROADS. HOWARD COUNTY DEPARTMENT OF PUBLIC WORKS.
 DIRECTOR: [Signature] DATE: 3/23/73

SURVEYOR'S, ENGINEER'S and OWNER'S CERTIFICATES

The undersigned, owner of the property shown on this Plat, grants unto, (1) Howard County, Maryland, its successors and assigns, the right to lay, construct and maintain water and sewer mains and laterals therefor in and under all road and street rights-of-way as shown hereon; (2) further it adopts this plan of subdivision and reserves the fee simple title to the beds of the streets and/or roads hereon, except however, for one dollar consideration, it herewith grants the right and option to Howard County, Maryland to acquire (within a period of five years commencing with the date of recording of this plat among the Land Records of Howard County) the fee simple title to the beds of the streets and/or roads shown hereon, together with such adjacent land, if any, as may be shown on this plat as areas designated for the installation of street lighting facilities.

The undersigned certify that the subdivision plan shown hereon is correct as complying with the requirements of Final Development Plan Phase 113 recorded in Plat Book 20 Folios 110 to 121, each inclusive, with all Open Space shown thereon to be used for drainage easements, if necessary, and the requirements of Article 17, Section 60 of the annotated code of Maryland concerning the making of this Plat and setting of markers have been complied with. The land shown hereon is a part of the land which by deed dated May 31, 1972 and recorded among the Land Records of Howard County, Maryland in Liber 594 Folio 736 was granted and conveyed by The Howard Research and Development Corporation to Howard Homes Inc.

PROFESSIONAL LAND SURVEYOR: [Signature] Whitman Requardt & Associates, Reg. No. 974, 2 W. Preston St. Baltimore, Md. 21201
 PROFESSIONAL ENGINEER: [Signature] Whitman Requardt & Associates, Reg. No. 974, 2 W. Preston St. Baltimore, Md. 21201
 OWNER: [Signature] Howard Homes, Inc., Columbia Md. 21043 P.O. Box 802, Auth. Agent

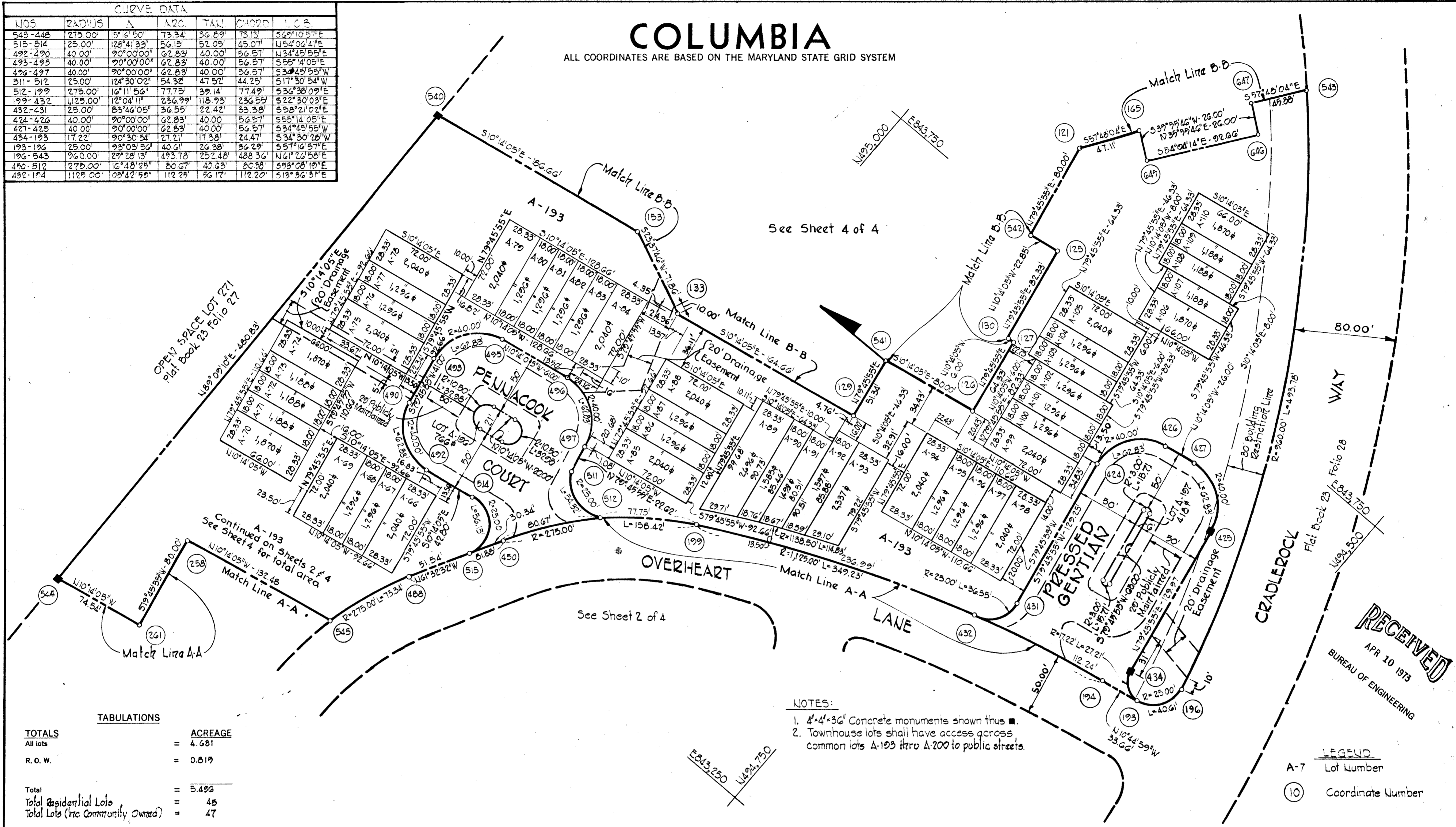
RECORDED IN PLAT BOOK 23 FOLIO 28
 on March 29, 1973 among The Land Records of Howard County, Maryland.

COLUMBIA
 VILLAGE OF OWEN BROWN
 LOTS A-1 TO A-200
 A RESUBDIVISION OF PARCEL "A"
 SECTION 1
 AREA 1
 Sheet 2 of 4
 6th Election District of Howard County, Md.
 Scale: 1" = 50' Date: September 6, 1972

CURVE DATA						
NOS	RADIUS	Δ	ARC	TAN	CHORD	L.C.B.
545-448	275.00'	15°16'50"	73.34'	32.89'	73.13'	52°10'57"E
515-514	25.00'	128°41'33"	56.15'	52.05'	45.07'	115°42'04"E
492-490	40.00'	90°00'00"	62.83'	40.00'	56.57'	113°45'55"E
493-495	40.00'	90°00'00"	62.83'	40.00'	56.57'	55°51'05"E
496-497	40.00'	90°00'00"	62.83'	40.00'	56.57'	53°45'55"W
511-512	25.00'	124°30'02"	54.32'	47.52'	44.25'	51°13'54"W
512-199	275.00'	16°11'56"	77.75'	39.14'	77.49'	53°36'07"E
199-432	1125.00'	12°04'11"	236.99'	118.93'	236.55'	52°23'03"E
432-431	25.00'	83°46'05"	36.55'	22.42'	33.38'	65°58'21"E
424-426	40.00'	90°00'00"	62.83'	40.00'	56.57'	55°51'05"E
427-425	40.00'	90°00'00"	62.83'	40.00'	56.57'	53°45'55"W
434-193	17.22'	90°30'54"	27.21'	17.38'	24.47'	53°30'26"W
193-196	25.00'	93°03'56"	40.61'	26.38'	36.29'	55°10'57"E
196-543	960.00'	29°28'13"	493.78'	252.48'	488.36'	N41°26'58"E
490-512	275.00'	16°18'25"	80.67'	40.63'	80.38'	59°38'08"E
482-194	1125.00'	08°12'59"	112.25'	56.17'	112.20'	51°39'33"E

COLUMBIA

ALL COORDINATES ARE BASED ON THE MARYLAND STATE GRID SYSTEM



RECEIVED
APR 10 1973
BUREAU OF ENGINEERING

LEGEND
A-7 Lot Number
⑩ Coordinate Number

TABULATIONS

TOTALS	=	ACREAGE
All lots	=	4.681
R. O. W.	=	0.819
Total	=	5.496
Total Residential Lots	=	45
Total Lots (Inc. Community Owned)	=	47

- NOTES:**
- 4"x4"x36" Concrete monuments shown thus ■.
 - Townhouse lots shall have access across common lots A-193 thru A-200 to public streets.

APPROVED: FOR PUBLIC WATER AND PUBLIC SEWERAGE SYSTEMS, HOWARD COUNTY HEALTH DEPARTMENT.

CB L... 8/27/73
COUNTY HEALTH OFFICER DATE

APPROVED: HOWARD COUNTY OFFICE OF PLANNING AND ZONING.

William A. ... 3-28-73
DIRECTOR DATE

APPROVED: FOR PUBLIC WATER AND PUBLIC SEWERAGE, STORM DRAINAGE SYSTEMS AND PUBLIC ROADS. HOWARD COUNTY DEPARTMENT OF PUBLIC WORKS.

William A. ... 5/23/73
DIRECTOR DATE

SURVEYOR'S, ENGINEER'S and OWNER'S CERTIFICATES

The undersigned, owner of the property shown on this Plat, grants unto, (1) Howard County, Maryland, its successors and assigns, the right to lay, construct and maintain water and sewer mains and laterals therefor in and under all road and street rights-of-way as shown hereon; (2) further it adopts this plan of subdivision and reserves the fee simple title to the beds of the streets and/or roads hereon, except however, for one dollar consideration, it herewith grants the right and option to Howard County, Maryland to acquire (within a period of five years commencing with the date of recording of this plat among the Land Records of Howard County) the fee simple title to the beds of the streets and/or roads shown hereon, together with such adjacent land, if any, as may be shown on this plat as areas designated for the installation of street lighting facilities.

The undersigned certify that the subdivision plan shown hereon is correct as complying with the requirements of Final Development Plan Phase 113 recorded in Plat Book 20 Folios 110 to 121, each inclusive, with all Open Space shown thereon to be used for drainage easements, if necessary, and the requirements of Article 17, Section 60 of the annotated code of Maryland concerning the making of this Plat and setting of markers have been complied with. The land shown hereon is a part of the land which by deed dated May 31, 1972 and recorded among the Land Records of Howard County, Maryland in Liber 594 Folio 736, was granted and conveyed by The Howard Research and Development Corporation to Howard Homes, Inc.

PROFESSIONAL LAND SURVEYOR: *Whitman, Reardon & Associates* Reg. No. [blank] 2.W. Preston St., Baltimore, Md. 21201

PROFESSIONAL ENGINEER: *Whitman, Reardon & Associates* Reg. No. [blank] 2.W. Preston St., Baltimore, Md. 21201

OWNER: *Howard Homes, Inc.* Auth. Agent
Columbia, Maryland 21043 P.O. Box 802

RECORDED IN PLAT BOOK 27 FOLIO 73
on March 29, 19 73 among The
Land Records of Howard County, Maryland.

COLUMBIA
VILLAGE OF OWEN BROWN
LOTS A-1 TO A-200
A RESUBDIVISION OF PARCEL "A"

SECTION 1
AREA 1
Sheet 3 of 4
Gth Election District of Howard County, Md.
Scale: 1" = 50' Date: September 6, 1972

COLUMBIA

ALL COORDINATES ARE BASED ON THE MARYLAND STATE GRID SYSTEM

OPEN SPACE LOT 271
Plat Book 23 Folios 274-279

OPEN SPACE LOT 271
Plat Book 23 Folios 274-279

NOTES:

- 4" x 4" x 36" Concrete monuments shown thus ■.
- Townhouse lots shall have access across common lots A-193 thru A-200 to public streets.

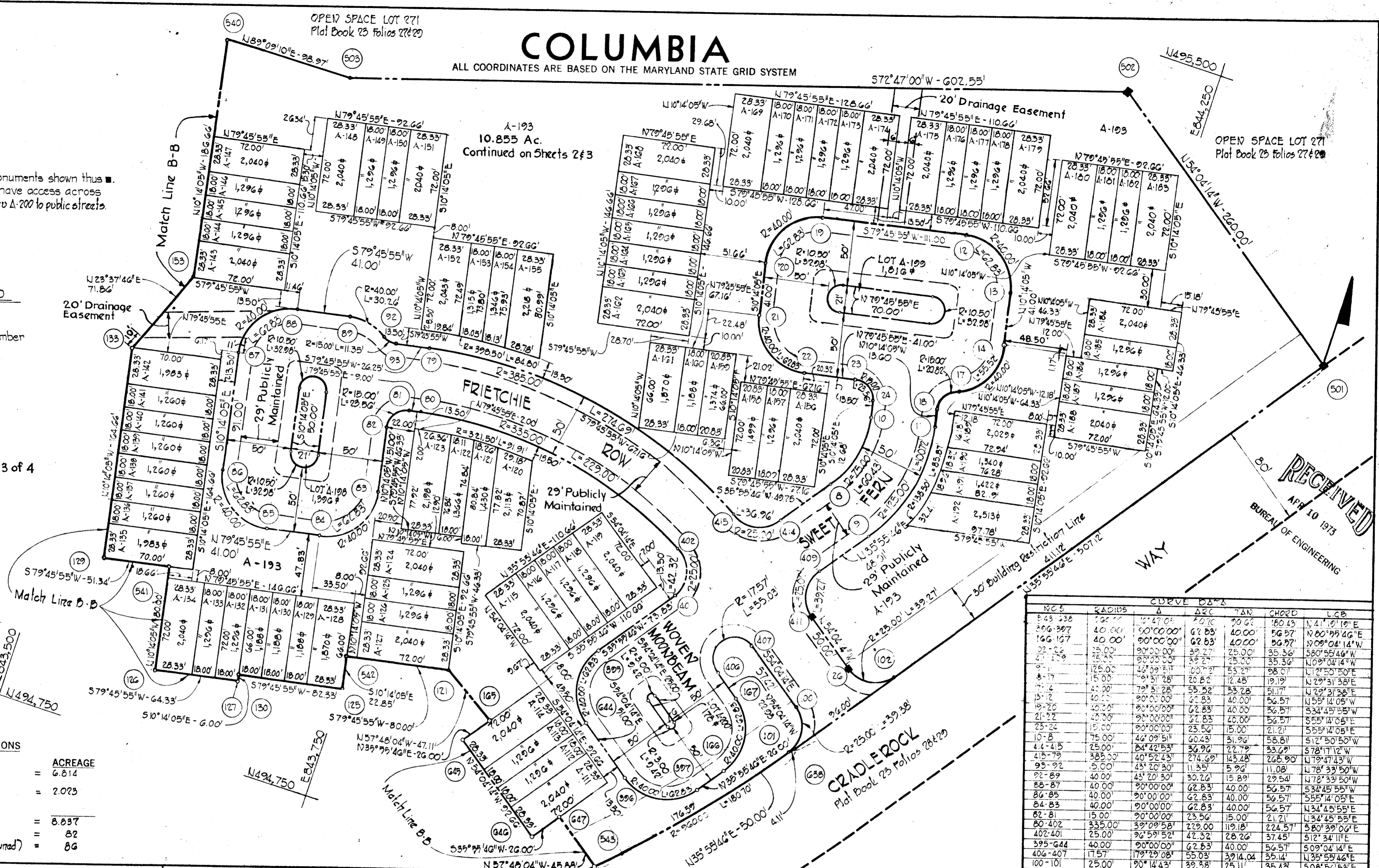
LEGEND

- A-7 Lot Number
- (10) Coordinate Number

See Sheet 3 of 4

TABULATIONS

TOTALS		ACREAGE
All lots	=	6.814
R. O. W.	=	2.023
Total	=	8.837
Total Residential Lots	=	82
Total Lots (Inc. Community Owned)	=	86



NO.	RADIUS	Δ	ΔZC	TAN	CHORD	LGB	
1	75.00'	10.47°00'	13.70'	20.67'	160.43'	N 41° 01' 19" E	
2	40.00'	90°00'00"	61.83'	40.00'	56.57'	N 80° 55' 46" E	
3	40.00'	90°00'00"	62.83'	40.00'	56.97'	N 80° 04' 14" W	
4	25.00'	90°00'00"	39.27'	25.00'	35.36'	S 80° 55' 46" W	
5	25.00'	90°00'00"	39.27'	25.00'	35.36'	N 09° 04' 14" W	
6	15.00'	125.00'	40.79' 51"	100.72'	55.27'	88.01'	N 12° 53' 50" E
7	15.00'	90°00'00"	20.83'	15.00'	19.17'	N 29° 51' 58" E	
8	45.00'	79° 51' 28"	55.52'	35.28'	51.17'	N 29° 51' 58" E	
9	40.00'	90°00'00"	62.83'	40.00'	56.57'	N 55° 14' 05" W	
10	40.00'	90°00'00"	62.83'	40.00'	56.57'	S 34° 45' 55" W	
11	25.00'	90°00'00"	39.27'	25.00'	35.36'	S 55° 14' 05" E	
12	15.00'	90°00'00"	20.83'	15.00'	21.21'	S 55° 14' 05" E	
13	10.00'	75.00'	40.79' 51"	60.43'	56.81'	S 12° 50' 50" W	
14	4.00'	25.00'	84.42' 53"	36.96'	22.79'	33.69'	S 78° 17' 12" W
15	385.00'	40° 52' 43"	274.69'	143.48'	268.90'	N 19° 47' 43" W	
16	95.00'	5.00'	43° 20' 30"	11.35'	5.92'	11.08'	N 78° 33' 50" W
17	40.00'	43° 20' 30"	30.26'	15.89'	29.54'	N 78° 33' 50" W	
18	40.00'	90°00'00"	62.83'	40.00'	56.57'	S 34° 45' 55" W	
19	40.00'	90°00'00"	62.83'	40.00'	56.57'	S 55° 14' 05" E	
20	40.00'	90°00'00"	62.83'	40.00'	56.57'	N 34° 45' 55" E	
21	80.00'	335.00'	39° 09' 58"	229.00'	119.18'	224.57'	S 80° 55' 46" E
22	402.40'	25.00'	96° 59' 52"	42.32'	28.26'	37.45'	S 12° 34' 11" E
23	395.644'	40.00'	90°00'00"	62.83'	40.00'	56.57'	S 09° 04' 14" E
24	406.407'	17.57'	179° 29' 08"	55.03'	39.14.04'	39.14'	N 35° 53' 46" E
25	100.00'	25.00'	90° 14' 43"	39.38'	25.11'	35.43'	S 08° 56' 53" E
26	101.00'	960.00'	0° 14' 42"	4.11'	2.05'	4.11'	N 36° 03' 07" E

SURVEYOR'S, ENGINEER'S and OWNER'S CERTIFICATES

The undersigned, owner of the property shown on this Plat, grants unto, (1) Howard County, Maryland, its successors and assigns, the right to lay, construct and maintain water and sewer mains and laterals therefor in and under all road and street rights-of-way as shown hereon; (2) further it adopts this plan of subdivision and reserves the fee simple title to the beds of the streets and/or roads hereon, except however, for one dollar consideration, it herewith grants the right and option to Howard County, Maryland to acquire (within a period of five years commencing with the date of recording of this plat among the Land Records of Howard County) the fee simple title to the beds of the streets and/or roads shown hereon, together with such adjacent land, if any, as may be shown on this plat as areas designated for the installation of street lighting facilities.

The undersigned certify that the subdivision plan shown hereon is correct as complying with the requirements of Final Development Plan Phase 113 recorded in Plat Book 20 Folios 110 to 121, each inclusive, with all Open Space shown thereon to be used for drainage easements, land shown hereon is a part of the land which by deed dated May 31, 1972 and recorded among the Land Records of Howard County, Maryland in Liber 594 Folio 736, was granted and conveyed by The Howard Research and Development Corporation to Howard Homes Inc.

APPROVED: FOR PUBLIC WATER AND PUBLIC SEWERAGE SYSTEMS, HOWARD COUNTY HEALTH DEPARTMENT.

[Signature] 8/27/73
COUNTY HEALTH OFFICER DATE

APPROVED: HOWARD COUNTY OFFICE OF PLANNING AND ZONING.

[Signature] 3-28-73
DIRECTOR DATE

APPROVED: FOR PUBLIC WATER AND PUBLIC SEWERAGE, STORM DRAINAGE SYSTEMS AND PUBLIC ROADS. HOWARD COUNTY DEPARTMENT OF PUBLIC WORKS.

[Signature] 3/2/73
DIRECTOR DATE

PROFESSIONAL LAND SURVEYOR (By) *[Signature]* 1974
Whitman, Reardon & Associates Reg. No. 21201
21201
21201

PROFESSIONAL ENGINEER (By) *[Signature]* 1974
Whitman, Reardon & Associates Reg. No. 21201
21201
21201

OWNER (By) *[Signature]*
Howard Homes, Inc. Auth. Agent
Columbia, Maryland 21043 P.O. Box 802

RECORDED IN PLAT BOOK 24 FOLIO 74
on March 29, 1973 among The
Land Records of Howard County, Maryland.

COLUMBIA
VILLAGE OF OWEN BROWN
LOTS A-1 TO A-200
A RESUBDIVISION OF PARCEL "A"

SECTION _____
AREA _____
Sheet 4 of 4
Gth Election District of Howard County, Md.
Scale: 1" = 50' Date: September 6, 1972

