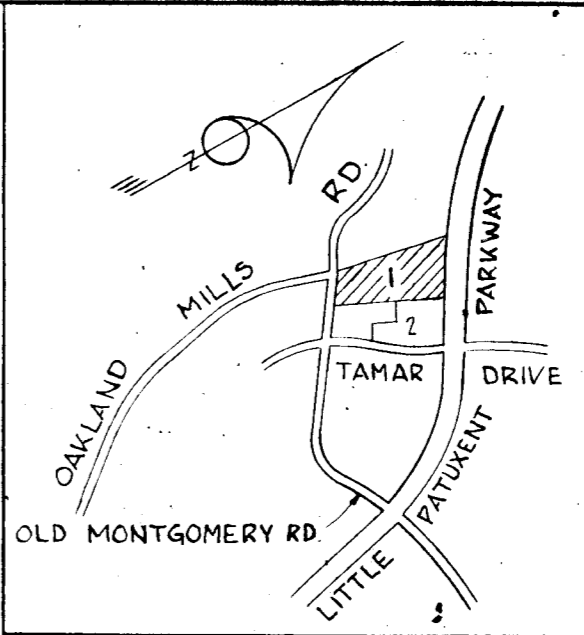
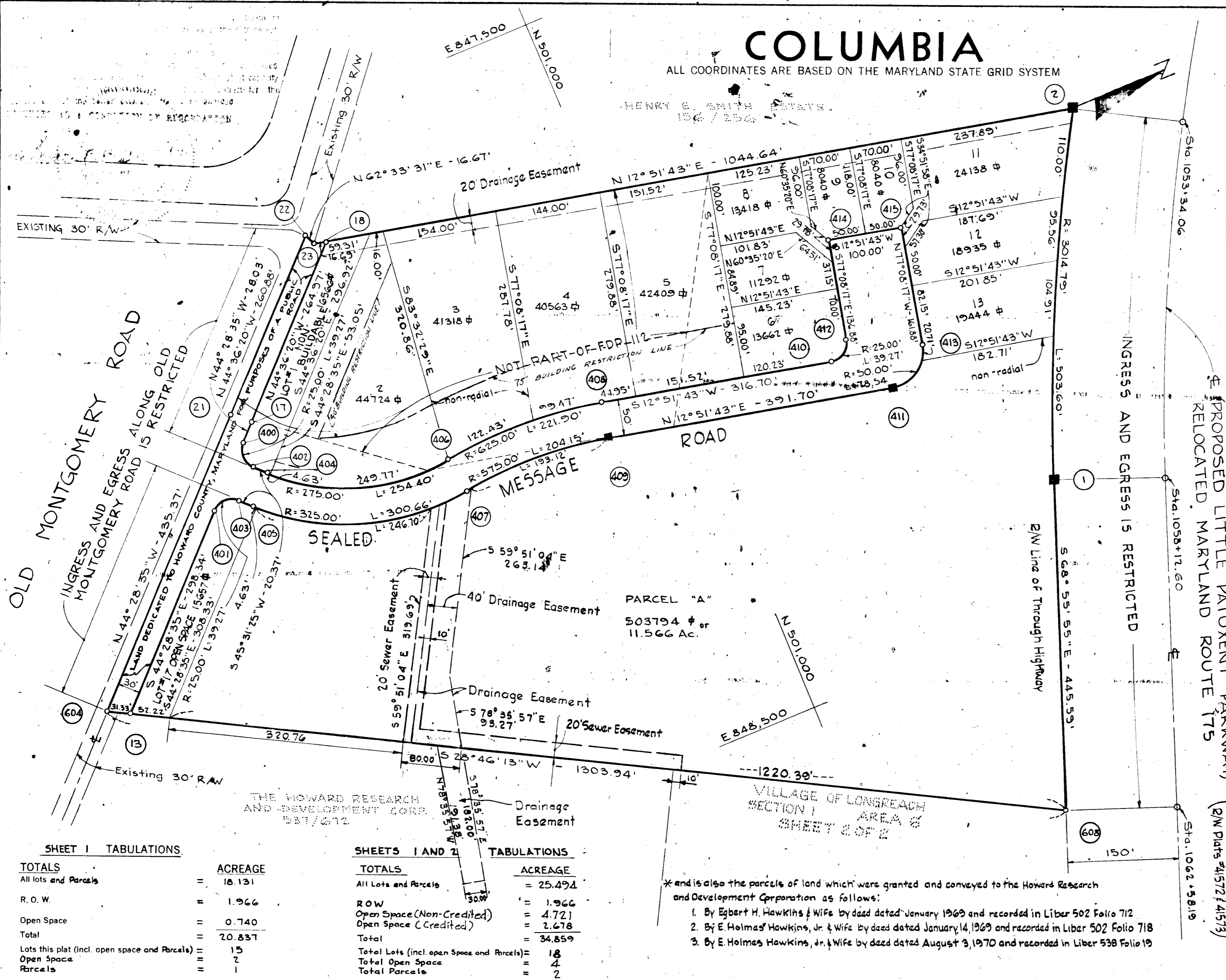


COLUMBIA

ALL COORDINATES ARE BASED ON THE MARYLAND STATE GRID SYSTEM



COORDINATE SCHEDULE		
NO.	NORTH	EAST
1	501419.35	848345.98
2	501638.69	847893.31
13	500143.66	848149.28
17	500447.89	847850.56
18	500636.54	847664.49
21	500426.85	847829.17
22	500612.58	847645.98
23	500620.26	847660.77
400	500427.89	847810.20
401	500356.53	847940.26
402	500427.56	847905.55
403	500391.89	847940.58
404	500441.84	847920.09
405	500406.16	847955.12
406	500673.86	848002.08
407	500680.37	848049.65
408	500894.36	848010.44
409	500883.23	848059.19
410	501203.11	848080.94
411	501265.09	848146.38
412	501233.04	848062.13
413	501324.97	848108.76
414	501263.51	847928.68
415	501361.00	847950.94
604	500116.19	848134.20
608	501259.17	848761.78

Note:
1. This plat is based on boundary survey data prepared by Purdum & Jeschke, Engineers, Ellicott City, Md.
2. 4" x 4" x 36" Coric Mon. indicated.

The undersigned, owner of the property shown on this plat, grants unto Howard County, Maryland, its successors and assigns, the right to lay, construct and maintain sewers, drains, water pipes, and other municipal utilities and services, in and through the specific easement area shown hereon, to the end that the specific lots shall be properly bordered with the right of way shown hereon.

By _____
The Howard Research and Development Corporation

CURVE DATA						
NOS.	RADIUS	Δ	ARC	TAN	CHORD	LCB
1-2	3014.79'	9°34'15"	503.60'	252.39'	503.01'	N64°08'49"W
400-402	25.00'	90°00'00"	39.27'	25.00'	35.36'	S89°28'35"E
401-403	25.00'	90°00'00"	39.27'	25.00'	35.36'	N0°31'25"E
404-406	275.00'	53°00'14"	254.40'	137.12'	245.43'	N19°01'18"E
405-407	325.00'	53°00'14"	300.66'	162.05'	290.05'	N19°01'18"E
406-408	625.00'	20°20'32"	221.90'	112.13'	220.74'	N2°41'27"E
407-409	575.00'	20°20'32"	204.15'	103.16'	203.08'	N2°41'27"E
410-412	25.00'	90°00'00"	39.27'	25.00'	35.36'	N37°08'17"W
411-413	50.00'	90°00'00"	78.54'	50.00'	70.71'	N37°08'17"W

SHEET I TABULATIONS

TOTALS	ACREAGE
All Lots and Parcels	18.131
R.O.W.	1.966
Open Space	0.740
Total	20.837
Lots this plat (incl. open space and Parcels)	15
Open Space	7
Parcels	1

SHEETS I AND 2 TABULATIONS

TOTALS	ACREAGE
All Lots and Parcels	25.494
ROW	1.966
Open Space (Non-Credited)	4.721
Open Space (Credited)	2.678
Total	34.859
Total Lots (incl. open space and Parcels)	18
Total Open Space	4
Total Parcels	2

*and is also the parcels of land which were granted and conveyed to the Howard Research and Development Corporation as follows:
1. By Egbert H. Hawkins & Wife by deed dated January 1969 and recorded in Liber 502 Folio 712
2. By E. Holmes Hawkins, Jr. & Wife by deed dated January 14, 1969 and recorded in Liber 502 Folio 718
3. By E. Holmes Hawkins, Jr. & Wife by deed dated August 3, 1970 and recorded in Liber 538 Folio 19

APPROVED: FOR PUBLIC WATER AND PUBLIC SEWERAGE SYSTEMS, HOWARD COUNTY HEALTH DEPARTMENT.

COUNTY HEALTH OFFICER DATE

APPROVED: HOWARD COUNTY OFFICE OF PLANNING AND ZONING.

DIRECTOR DATE

APPROVED FOR PUBLIC WATER, STORM SEWERAGE, AND PUBLIC BOARDS, COMMISSIONERS OF PUBLIC WORKS AND SEWERAGE IN AND FOR HOWARD COUNTY, MARYLAND.

DIRECTOR DATE

SURVEYOR'S, ENGINEER'S and OWNER'S CERTIFICATES

The undersigned, owner of the property shown on this Plat, grants unto, (1) Howard County, Maryland, its successors and assigns, the right to lay, construct and maintain water and sewer mains and laterals therefor in and under all road and street rights-of-way as shown hereon; (2) further it adopts this plan of subdivision and reserves the fee simple title to the beds of the streets and/or roads hereon, except however, for one dollar consideration, it herewith grants the right and option to Howard County, Maryland to acquire (within a period of five years commencing with the date of recording of this plat among the Land Records of Howard County) the fee simple title to the beds of the streets and/or roads shown hereon, and including the land dedicated hereon for the widening of Oakland Mills Road, together with such adjacent land, if any, as may be shown on this plat as areas designated for the installation of street lighting facilities.

The undersigned certify that the subdivision plan shown hereon is correct as complying with the requirements of Final Development Plan Phase 112 recorded in Plat Book 20 Folios 39 to 41, each inclusive, with all Open Space shown thereon to be used for drainage easements, if necessary, and the requirements of Article 17, Section 60 of the annotated code of Maryland concerning the making of this Plat and setting of markers have been complied with. The land shown hereon is a part of the land which by deed dated December 13, 1966 and recorded among the Land Records of Howard County, Maryland in Liber 463 Folio 196, was granted and conveyed by C. Aileen Ames to The Howard Research and Development Corporation.

PROFESSIONAL LAND SURVEYOR
Whitman, Reardon & Associates
2 W. Preston St., Baltimore, Md. 21201

PROFESSIONAL ENGINEER
Whitman, Reardon & Associates
2 W. Preston St., Baltimore, Md. 21201

The Howard Research and Development Corporation
Columbia, Md. 21043

RECORDED IN PLAT BOOK 23 FOLIO 18
on MAY 31, 1972 among The
Land Records of Howard County, Maryland.

COLUMBIA
VILLAGE OF LONGREACH

SECTION 1
AREA 6
Sheet 1 of 2
Election District of Howard County, Md.
Scale: 1" = 100' Date: March 3, 1972

JUL 03 1972
BUREAU OF ENGINEERING
REGISTERED PROFESSIONAL ENGINEER

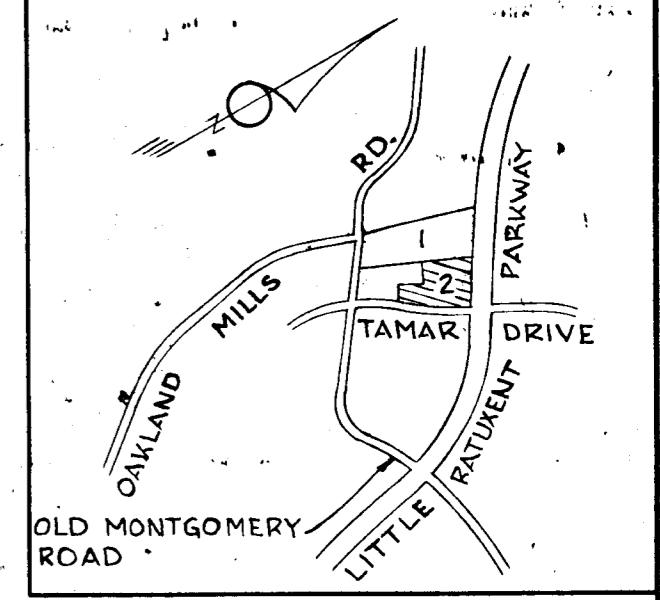
S.P.
D.O.E.

COLUMBIA

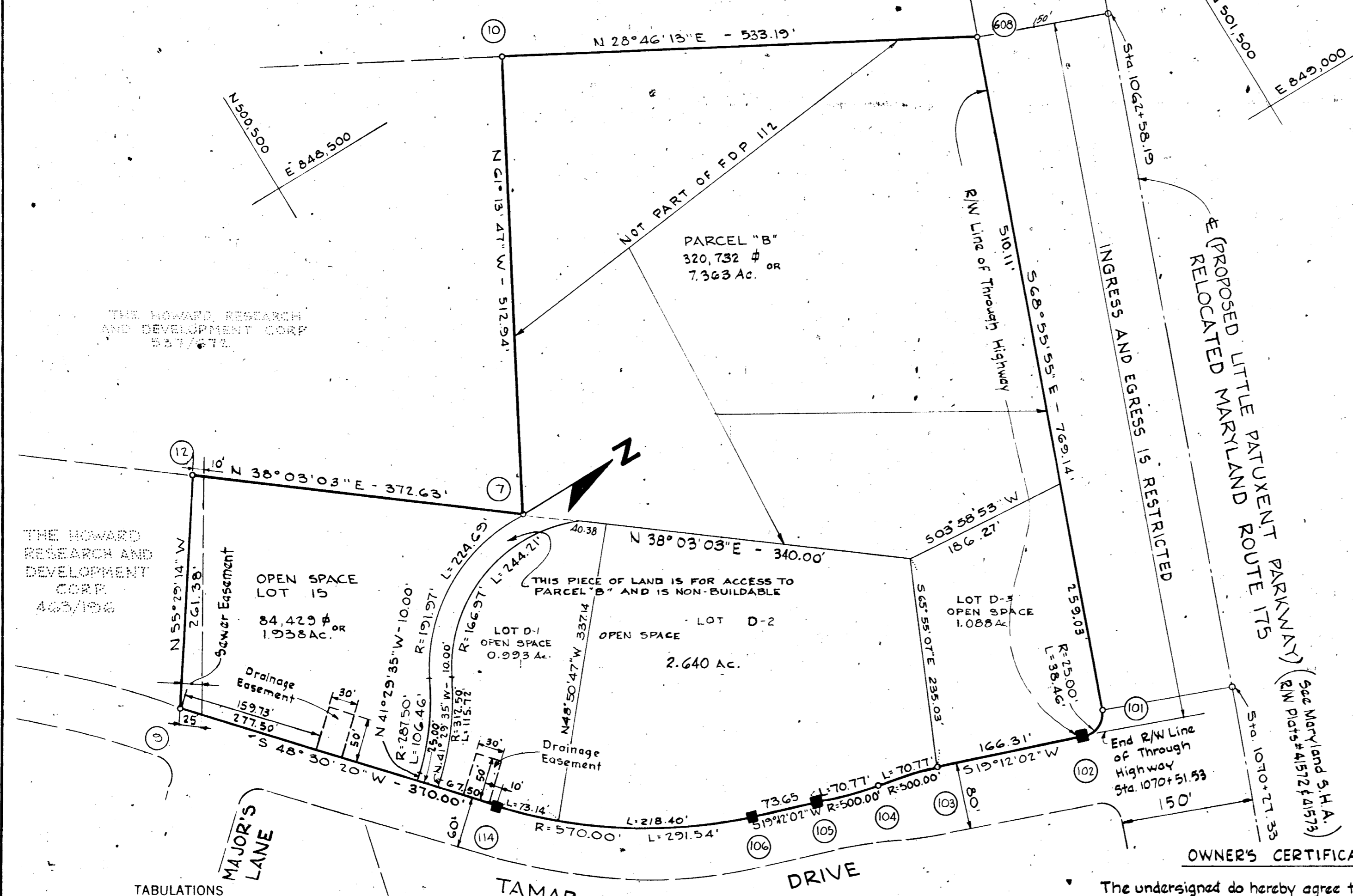
ALL COORDINATES ARE BASED ON THE MARYLAND STATE GRID SYSTEM.

VILLAGE OF LONGREACH
SECTION 1 AREA G
SHEET 1 OF 2

DECLARATION
This plat is located within the drainage area of the Sewage Treatment Plant. Sewage treatment plant capacity is limited to the date hereof. The undersigned hereby declares that the public utility easement shown on this plat is for the purpose of providing for the installation of a sewer line to the plant capacity. The undersigned hereby declares that the installation of the sewer line is necessary for the development of the land shown on this plat.



VICINITY MAP
Scale: 1" = 2000'



NO	NORTH	EAST
7	500544.92	848954.78
9	500103.39	848940.48
10	500791.80	848505.16
12	500251.49	848725.11
101	500982.69	849479.51
102	500951.14	849494.13
103	500794.08	849439.43
104	500725.82	849420.96
105	500657.57	849402.48
106	500588.02	849378.26
114	500348.53	849217.62
608	501259.17	848761.78

- Note:
- This plat is based on boundary survey data prepared by Purdum & Jeschke, Engineers, Ellicott City, Md.
 - 4"x4"x36" Conc. Mon. indicated

THE HOWARD RESEARCH AND DEVELOPMENT CORP
537/172

THE HOWARD RESEARCH AND DEVELOPMENT CORP
463/196

Item	ACREAGE
All Parcels	7.363
R.O.W. Open Space (NON-CREDITED)	0
Open Space (CREDITED)	1.938
Total	14.022
Lots this plat (incl. open space and Parcels)	3
Open Space Lots	2
Parcels	1

The undersigned do hereby agree to the plan of subdivision as shown hereon for the parcels of land which by deed dated Sept. 25, 1970 and recorded among the Land Records of Howard County, Maryland in Liber 543 Folio 765 were granted and conveyed by Egbert H. Hawkins and wife to Richard L. Anderson and Wife.

Richard L. Anderson
June P. Anderson
Columbia, Maryland 21043

NOS.	RADIUS	Δ	ARC	TAN	CHORD	LCB
101-102	25.00'	88°08'02"	38.46'	24.20'	34.78'	S24°51'59"E
103-104	500.00'	8°06'34"	70.77'	35.44'	70.71'	S15°08'46"W
104-105	500.00'	8°06'34"	70.77'	35.44'	70.71'	S15°08'46"W
106-114	570.00'	29°18'18"	291.54'	149.03'	288.37'	S33°51'12"W

APPROVED: FOR PUBLIC WATER AND PUBLIC SEWERAGE SYSTEMS, HOWARD COUNTY HEALTH DEPARTMENT.

[Signature] 5-31-72
COUNTY HEALTH OFFICER DATE

APPROVED: HOWARD COUNTY OFFICE OF PLANNING AND ZONING.

[Signature] 5-31-72
DIRECTOR DATE

PUBLIC ROADS. CONDITIONAL APPROVAL FOR PUBLIC SEWERAGE IN ACCORDANCE WITH A ONE DECLARATION HOWARD COUNTY DEPARTMENT OF PUBLIC WORKS

[Signature] 5/31/72
DIRECTOR DATE

SURVEYOR'S, ENGINEER'S and OWNER'S CERTIFICATES

The undersigned, owner of the property shown on this Plat, grants unto (1) Howard County, Maryland, its successors and assigns, the right to lay, construct and maintain water and sewer mains and laterals therefor in and under all road and street rights-of-way as shown hereon; (2) further it adopts this plan of subdivision and reserves the fee simple title to the beds of the streets and/or roads hereon, except however, for one dollar consideration, it herewith grants the right and option to Howard County, Maryland to acquire (within a period of five years commencing with the date of recording of this plat among the Land Records of Howard County, Maryland) the fee simple title to the beds of the streets and/or roads shown hereon, and including the land dedicated hereon for the widening of Oakland Mills Road, together with such adjacent land, if any, as may be shown on this plat as areas designated for the installation of street lighting facilities.

The undersigned certify that the subdivision plan shown hereon is correct as complying with the requirements of Final Development Plan Phase 112 recorded in Plat Book 20 Folios 39 to 41, each inclusive, with all Open Space shown thereon to be used for drainage easements, if necessary, and the requirements of Article 17, Section 60 of the annotated code of Maryland concerning the making of this Plat and setting of markers have been complied with. The land shown hereon is a part of the land which by deed dated December 13, 1966 and recorded among the Land Records of Howard County, Maryland in Liber 463 Folio 196, was granted and conveyed by C. Aileen Ames to The Howard Research and Development Corporation.

PROFESSIONAL LAND SURVEYOR
[Signature]
Whitman, Reardon & Associates
2 W. Preston St., Baltimore, Md. 21201

PROFESSIONAL ENGINEER
[Signature]
Whitman, Reardon & Associates
2 W. Preston St., Baltimore, Md. 21201

(By) *[Signature]* Auth. Agent
The Howard Research and Development Corporation
Columbia, Md. 21043

RECORDED IN PLAT BOOK 23 FOLIO 19
on MAY 31, 1972 among The
Land Records of Howard County, Maryland.

COLUMBIA
VILLAGE OF LONGREACH

SECTION 1
AREA 6
Sheet 2 of 2
6th Election District of Howard County, Md.
Scale: 1" = 100' Date: March 3, 1972