

FINAL DEVELOPMENT PLAN CRITERIA

The Area included within this Final Development Plan Phase 121

is applicable to Section 2 Area 3, of Town Center.

6010 STREET AND STAIR Section 17.031 A (1):

To be shown on subdivision plats, if required by the Howard County Office of Planning and Zoning.

6020 LIGHTING Section 17.031 A (2):

To be shown on subdivision plats, if required by the Howard County Office of Planning and Zoning.

6030 FIRE ALARMS Section 17.031 A (3):

To be shown on subdivision plats, if required by the Howard County Office of Planning and Zoning.

6040 UTILITIES Section 17.031 A (4):

To be shown on subdivision plats, if required by the Howard County Office of Planning and Zoning.

6050 DRIVEWAYS Section 17.031 A (5):

To be shown on subdivision plats, if required by the Howard County Office of Planning and Zoning.

6060 STRUCTURES Section 17.031 A (6):

- 1. Foundations
- 2. Foundations
- 3. Foundations
- 4. Foundations
- 5. Foundations
- 6. Foundations
- 7. Foundations
- 8. Foundations
- 9. Foundations
- 10. Foundations
- 11. Foundations
- 12. Foundations
- 13. Foundations
- 14. Foundations
- 15. Foundations
- 16. Foundations
- 17. Foundations
- 18. Foundations
- 19. Foundations
- 20. Foundations
- 21. Foundations
- 22. Foundations
- 23. Foundations
- 24. Foundations
- 25. Foundations
- 26. Foundations
- 27. Foundations
- 28. Foundations
- 29. Foundations
- 30. Foundations
- 31. Foundations
- 32. Foundations
- 33. Foundations
- 34. Foundations
- 35. Foundations
- 36. Foundations
- 37. Foundations
- 38. Foundations
- 39. Foundations
- 40. Foundations
- 41. Foundations
- 42. Foundations
- 43. Foundations
- 44. Foundations
- 45. Foundations
- 46. Foundations
- 47. Foundations
- 48. Foundations
- 49. Foundations
- 50. Foundations
- 51. Foundations
- 52. Foundations
- 53. Foundations
- 54. Foundations
- 55. Foundations
- 56. Foundations
- 57. Foundations
- 58. Foundations
- 59. Foundations
- 60. Foundations
- 61. Foundations
- 62. Foundations
- 63. Foundations
- 64. Foundations
- 65. Foundations
- 66. Foundations
- 67. Foundations
- 68. Foundations
- 69. Foundations
- 70. Foundations
- 71. Foundations
- 72. Foundations
- 73. Foundations
- 74. Foundations
- 75. Foundations
- 76. Foundations
- 77. Foundations
- 78. Foundations
- 79. Foundations
- 80. Foundations
- 81. Foundations
- 82. Foundations
- 83. Foundations
- 84. Foundations
- 85. Foundations
- 86. Foundations
- 87. Foundations
- 88. Foundations
- 89. Foundations
- 90. Foundations
- 91. Foundations
- 92. Foundations
- 93. Foundations
- 94. Foundations
- 95. Foundations
- 96. Foundations
- 97. Foundations
- 98. Foundations
- 99. Foundations
- 100. Foundations

6070 UTILITIES Section 17.031 A (7):

To be shown on subdivision plats, if required by the Howard County Office of Planning and Zoning.

- 1. Foundations
- 2. Foundations
- 3. Foundations
- 4. Foundations
- 5. Foundations
- 6. Foundations
- 7. Foundations
- 8. Foundations
- 9. Foundations
- 10. Foundations
- 11. Foundations
- 12. Foundations
- 13. Foundations
- 14. Foundations
- 15. Foundations
- 16. Foundations
- 17. Foundations
- 18. Foundations
- 19. Foundations
- 20. Foundations
- 21. Foundations
- 22. Foundations
- 23. Foundations
- 24. Foundations
- 25. Foundations
- 26. Foundations
- 27. Foundations
- 28. Foundations
- 29. Foundations
- 30. Foundations
- 31. Foundations
- 32. Foundations
- 33. Foundations
- 34. Foundations
- 35. Foundations
- 36. Foundations
- 37. Foundations
- 38. Foundations
- 39. Foundations
- 40. Foundations
- 41. Foundations
- 42. Foundations
- 43. Foundations
- 44. Foundations
- 45. Foundations
- 46. Foundations
- 47. Foundations
- 48. Foundations
- 49. Foundations
- 50. Foundations
- 51. Foundations
- 52. Foundations
- 53. Foundations
- 54. Foundations
- 55. Foundations
- 56. Foundations
- 57. Foundations
- 58. Foundations
- 59. Foundations
- 60. Foundations
- 61. Foundations
- 62. Foundations
- 63. Foundations
- 64. Foundations
- 65. Foundations
- 66. Foundations
- 67. Foundations
- 68. Foundations
- 69. Foundations
- 70. Foundations
- 71. Foundations
- 72. Foundations
- 73. Foundations
- 74. Foundations
- 75. Foundations
- 76. Foundations
- 77. Foundations
- 78. Foundations
- 79. Foundations
- 80. Foundations
- 81. Foundations
- 82. Foundations
- 83. Foundations
- 84. Foundations
- 85. Foundations
- 86. Foundations
- 87. Foundations
- 88. Foundations
- 89. Foundations
- 90. Foundations
- 91. Foundations
- 92. Foundations
- 93. Foundations
- 94. Foundations
- 95. Foundations
- 96. Foundations
- 97. Foundations
- 98. Foundations
- 99. Foundations
- 100. Foundations

6080 UTILITIES Section 17.031 A (8):

To be shown on subdivision plats, if required by the Howard County Office of Planning and Zoning.

6090 EMPLOYMENT CENTER LAND USE AREAS Section 17.031 B:

Structure shall be sited within 20 feet of the right of way of any public street, road, or highway, except, however, that structures may be constructed at any location within such setback area if such construction is in accordance with a site development plan approved by the Howard County Planning Board. Except as restricted by this paragraph, other buildings and other structures may be sited at any location within commercial land use areas. All structures shall be sited in accordance with a site development plan approved by the Howard County Planning Board.

Planting and landscaping must be in accordance with the Howard County Planning Board at the time a site development plan is submitted for approval, when required by center commercial areas, and in accordance with residential landscaping.

6100 UTILITIES Section 17.031 B:

- 1. Foundations
- 2. Foundations
- 3. Foundations
- 4. Foundations
- 5. Foundations
- 6. Foundations
- 7. Foundations
- 8. Foundations
- 9. Foundations
- 10. Foundations
- 11. Foundations
- 12. Foundations
- 13. Foundations
- 14. Foundations
- 15. Foundations
- 16. Foundations
- 17. Foundations
- 18. Foundations
- 19. Foundations
- 20. Foundations
- 21. Foundations
- 22. Foundations
- 23. Foundations
- 24. Foundations
- 25. Foundations
- 26. Foundations
- 27. Foundations
- 28. Foundations
- 29. Foundations
- 30. Foundations
- 31. Foundations
- 32. Foundations
- 33. Foundations
- 34. Foundations
- 35. Foundations
- 36. Foundations
- 37. Foundations
- 38. Foundations
- 39. Foundations
- 40. Foundations
- 41. Foundations
- 42. Foundations
- 43. Foundations
- 44. Foundations
- 45. Foundations
- 46. Foundations
- 47. Foundations
- 48. Foundations
- 49. Foundations
- 50. Foundations
- 51. Foundations
- 52. Foundations
- 53. Foundations
- 54. Foundations
- 55. Foundations
- 56. Foundations
- 57. Foundations
- 58. Foundations
- 59. Foundations
- 60. Foundations
- 61. Foundations
- 62. Foundations
- 63. Foundations
- 64. Foundations
- 65. Foundations
- 66. Foundations
- 67. Foundations
- 68. Foundations
- 69. Foundations
- 70. Foundations
- 71. Foundations
- 72. Foundations
- 73. Foundations
- 74. Foundations
- 75. Foundations
- 76. Foundations
- 77. Foundations
- 78. Foundations
- 79. Foundations
- 80. Foundations
- 81. Foundations
- 82. Foundations
- 83. Foundations
- 84. Foundations
- 85. Foundations
- 86. Foundations
- 87. Foundations
- 88. Foundations
- 89. Foundations
- 90. Foundations
- 91. Foundations
- 92. Foundations
- 93. Foundations
- 94. Foundations
- 95. Foundations
- 96. Foundations
- 97. Foundations
- 98. Foundations
- 99. Foundations
- 100. Foundations

Division of Commercial Land Use Areas, Inc. (DLUA) shall be owned, leased, purchased or otherwise conveyed individually, with the exception of the right to a public trust, expressly permitted in condition that there shall be no other use of the land use areas adjoining such lots, for use in connection with the business, enterprises and others having an interest in such lots, which areas shall be in, and shall have and maintain access to, public streets, parking and other common spaces.

6110 UTILITIES Section 17.031 B:

6030 TOWN CENTER - COMMERCIAL Section 17.031 B:

6040 PARKING REQUIREMENTS Section 17.031 B:

- 1. Foundations
- 2. Foundations
- 3. Foundations
- 4. Foundations
- 5. Foundations
- 6. Foundations
- 7. Foundations
- 8. Foundations
- 9. Foundations
- 10. Foundations
- 11. Foundations
- 12. Foundations
- 13. Foundations
- 14. Foundations
- 15. Foundations
- 16. Foundations
- 17. Foundations
- 18. Foundations
- 19. Foundations
- 20. Foundations
- 21. Foundations
- 22. Foundations
- 23. Foundations
- 24. Foundations
- 25. Foundations
- 26. Foundations
- 27. Foundations
- 28. Foundations
- 29. Foundations
- 30. Foundations
- 31. Foundations
- 32. Foundations
- 33. Foundations
- 34. Foundations
- 35. Foundations
- 36. Foundations
- 37. Foundations
- 38. Foundations
- 39. Foundations
- 40. Foundations
- 41. Foundations
- 42. Foundations
- 43. Foundations
- 44. Foundations
- 45. Foundations
- 46. Foundations
- 47. Foundations
- 48. Foundations
- 49. Foundations
- 50. Foundations
- 51. Foundations
- 52. Foundations
- 53. Foundations
- 54. Foundations
- 55. Foundations
- 56. Foundations
- 57. Foundations
- 58. Foundations
- 59. Foundations
- 60. Foundations
- 61. Foundations
- 62. Foundations
- 63. Foundations
- 64. Foundations
- 65. Foundations
- 66. Foundations
- 67. Foundations
- 68. Foundations
- 69. Foundations
- 70. Foundations
- 71. Foundations
- 72. Foundations
- 73. Foundations
- 74. Foundations
- 75. Foundations
- 76. Foundations
- 77. Foundations
- 78. Foundations
- 79. Foundations
- 80. Foundations
- 81. Foundations
- 82. Foundations
- 83. Foundations
- 84. Foundations
- 85. Foundations
- 86. Foundations
- 87. Foundations
- 88. Foundations
- 89. Foundations
- 90. Foundations
- 91. Foundations
- 92. Foundations
- 93. Foundations
- 94. Foundations
- 95. Foundations
- 96. Foundations
- 97. Foundations
- 98. Foundations
- 99. Foundations
- 100. Foundations

6120 UTILITIES Section 17.031 B:

6130 UTILITIES Section 17.031 B:

6140 UTILITIES Section 17.031 B:

6150 UTILITIES Section 17.031 B:

Land Use	Acres
Employment Center Commercial	7.974
Total:	7.974

TOWN CENTER SECTION 2 AREA 3

PETITIONER AND OWNER THE HOWARD RESEARCH AND DEVELOPMENT CORPORATION COLUMBIA, MD, 21043

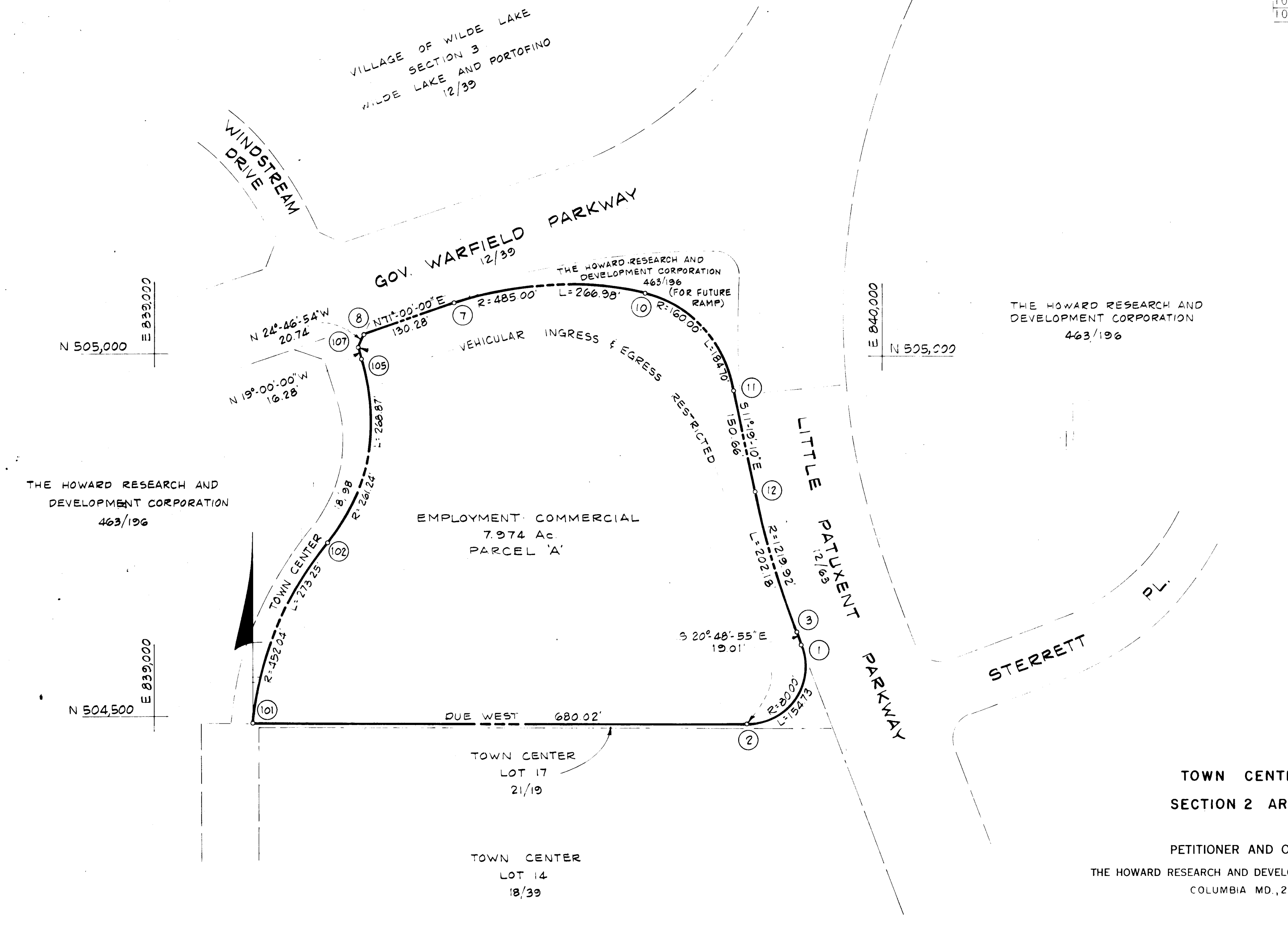
COLUMBIA

FINAL DEVELOPMENT PLAN PHASE 121 5th ELECTION DISTRICT HOWARD COUNTY, MD. FEBRUARY, 1972 SHEET 2 OF 3

RECORDED PLAT BOOK 20 FOLIO 123 May 25, 1972 AMONG THE LAND RECORDS OF HOWARD COUNTY, MD.

55 B

NO	COORDINATES	
	NORTH	EAST
1	504,691.87	839,889.37
2	504,493.44	839,814.99
3	504,619.64	839,882.61
7	505,071.35	839,411.81
8	505,028.94	839,288.92
10	505,086.21	839,675.01
11	504,961.43	839,797.16
12	504,813.70	839,826.73
101	504,493.44	839,134.57
102	504,741.74	839,238.35
105	504,994.71	839,285.23
107	505,010.11	839,270.93



COLUMBIA

PLAT BOOK 20 FOLIO 124 FINAL DEVELOPMENT PLAN PHASE 121
 MAY 25 1972 5TH ELECTION DISTRICT HOWARD COUNTY, MD.
 HOWARD COUNTY, MD. SCALE 1"=100' FEBRUARY 1972 SHEET 3 OF 3

55 B