

TABLE OF CURVE DATA					
From	To	RADIUS	LENGTH	CHORD BEARING	DISTANCE
12	13	5,804.58	1844.24	N 53° 03' 11" E	1836.47
40	41	17,378.73	705.12	S 52° 11' 11" W	705.07
54	55	1,482.69	436.91	N 45° 28' 09" W	435.33

Note: Conc. Monuments found or set on all corners.  
See Sheet No 2 of 2 for Title References

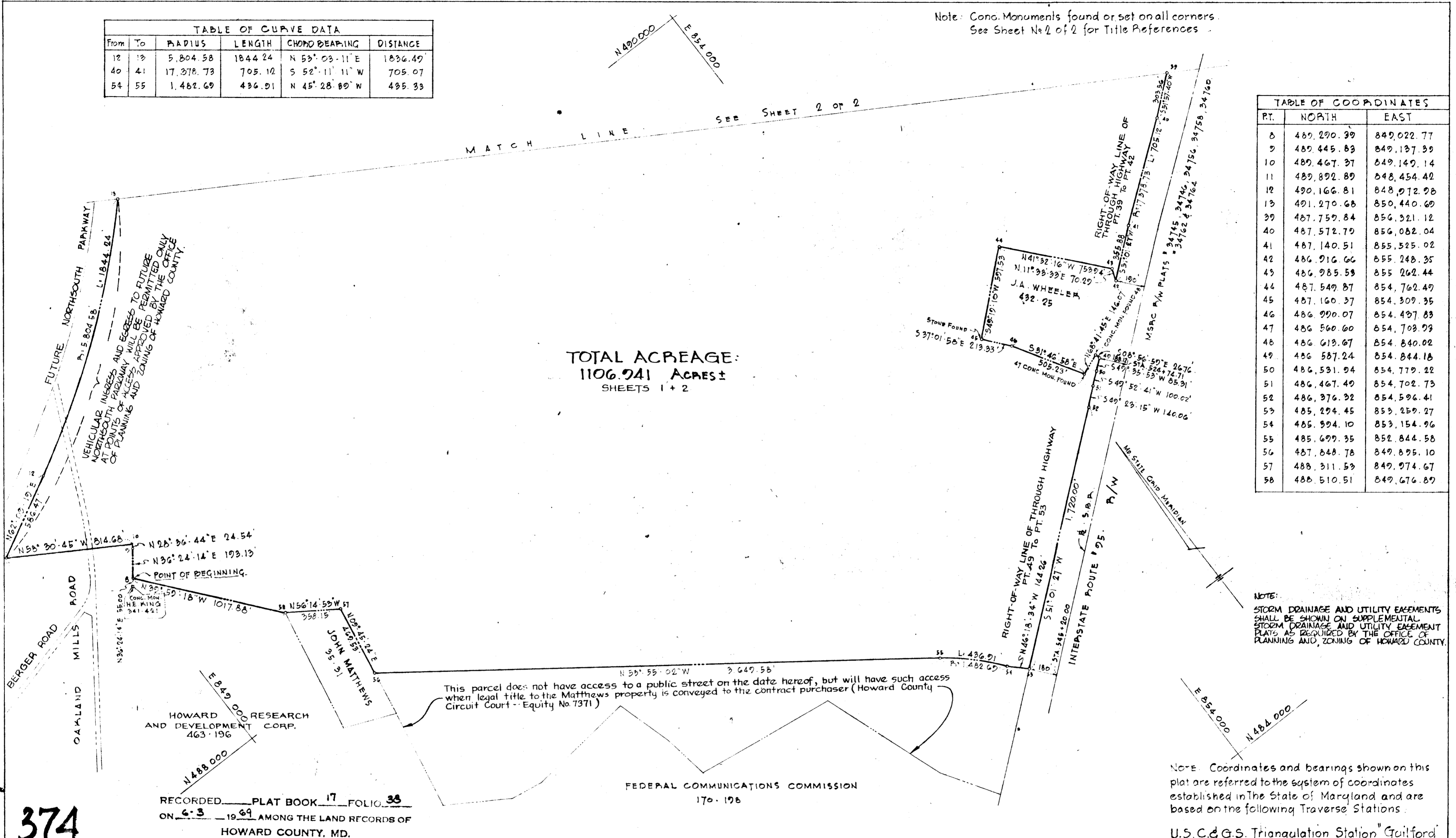


TABLE OF COORDINATES		
PT.	NORTH	EAST
8	489,290.39	849,022.77
9	489,445.89	849,137.99
10	489,467.37	849,147.14
11	489,892.89	848,454.42
12	490,166.81	848,912.98
13	491,270.68	850,440.69
39	487,759.84	856,921.12
40	487,572.79	856,082.04
41	487,140.51	855,525.02
42	486,916.66	855,248.35
43	486,985.59	855,262.44
44	487,549.87	854,762.49
45	487,160.37	854,309.35
46	486,990.07	854,437.89
47	486,560.60	854,703.93
48	486,619.67	854,840.02
49	486,587.24	854,844.18
50	486,531.94	854,779.22
51	486,467.49	854,702.73
52	486,376.32	854,596.41
53	485,294.45	853,259.27
54	485,994.10	853,154.96
55	485,699.35	852,844.58
56	487,848.78	849,895.10
57	488,311.53	849,974.67
58	488,510.51	849,676.89

NOTE: STORM DRAINAGE AND UTILITY EASEMENTS SHALL BE SHOWN ON SUPPLEMENTAL STORM DRAINAGE AND UTILITY EASEMENT PLATS AS REQUIRED BY THE OFFICE OF PLANNING AND ZONING OF HOWARD COUNTY.

NOTE: Coordinates and bearings shown on this plat are referred to the system of coordinates established in the State of Maryland and are based on the following Traverse Stations:

U.S.C. & G.S. Triangulation Station "Guilford" PB 17 F 89

374

RECORDED PLAT BOOK 17 FOLIO 33  
ON 6-3-69 AMONG THE LAND RECORDS OF  
HOWARD COUNTY, MD.

APPROVED: FOR PUBLIC WATER & PUBLIC SEWERAGE SYSTEMS, HOWARD COUNTY HEALTH DEPT.	
County Health Officer	Date
APPROVED: HOWARD COUNTY OFFICE OF PLANNING AND ZONING.	
Director	Date
APPROVED: FOR PUBLIC WATER & PUBLIC SEWERAGE STORM DRAINAGE SYSTEMS AND PUBLIC ROADS. HOWARD COUNTY DEPARTMENT OF PUBLIC WORKS.	
Director	Date
APPROVED: FOR HUMAN CONSUMPTION AND SANITARY SEWERAGE.	
Director	Date

**SURVEYOR'S CERTIFICATE**

I, James Raymond Mask, hereby certify that the plan shown hereon is correct, and that stones and/or monuments marked thus are in place as shown.

I, further certify that the requirements of Section 60-B, Article 17, of the Annotated Code of Maryland (as amended) as far as they relate to the making of this plat, have been complied with.

By enactment of The Howard County Council (Council Bill No.4) LARK BROWN ROAD, which used to pass through the area of this plat, was closed. Enacted 4/8/69

GREEN ASSOCIATES, INC.  
CONSULTING ENGINEERS  
BALTIMORE, MARYLAND

**OWNER'S CERTIFICATE**

We, the undersigned, owners of the property shown and described hereon, adopt this plan of subdivision in accordance with the requirements of Article 17 of The Annotated Code of Maryland (Fleck 1947 Supplement).

OWNER  
MARYLAND ABSTRACT COMPANY, INC.  
By J. Elmer Weisheit Jr., Pres.  
Teacher's Bldg - Columbia, Md

PLAT SHOWING PROPERTY LOCATED IN THE SIXTH ELECTION DISTRICT OF HOWARD COUNTY OWNED BY MARYLAND ABSTRACT COMPANY, INC.

LIBER - \_\_\_\_\_  
FOLIO - \_\_\_\_\_

SCALE 1" = 400' DATE 5-27-69 SHEET 1 of 2

NOTE: Coordinates and Bearings shown on this plat are referred to the System of Coordinates established in the State of Maryland and are based on the following Traverse Stations:  
U.S.C. & G.S. Triangulation Station "Guilford"

TABLE OF COORDINATES

P.T.	NORTH	EAST
13	491,270.68	850,440.60
14	493,993.47	859,065.57
15	494,245.50	859,288.35
16	494,217.31	859,534.27
17	492,541.53	858,607.93
18	492,374.12	858,010.37
19	491,640.50	857,118.78
20	491,667.33	857,132.62
21	491,637.57	857,041.16
22	491,706.92	857,354.96
23	491,216.44	858,124.61
24	491,132.82	858,034.50
25	490,990.85	858,383.91
26	490,445.68	858,791.35
27	490,101.32	858,888.07
28	490,011.68	858,899.07
29	489,920.61	858,906.19
30	489,148.76	858,472.02
31	489,117.22	858,422.69
32	488,954.26	858,173.19
33	488,567.52	857,596.00
34	488,494.03	857,407.48
35	488,482.22	857,373.99
36	488,420.92	857,217.42
37	488,360.43	857,121.97
38	488,188.48	856,947.10
39	487,759.84	856,321.12

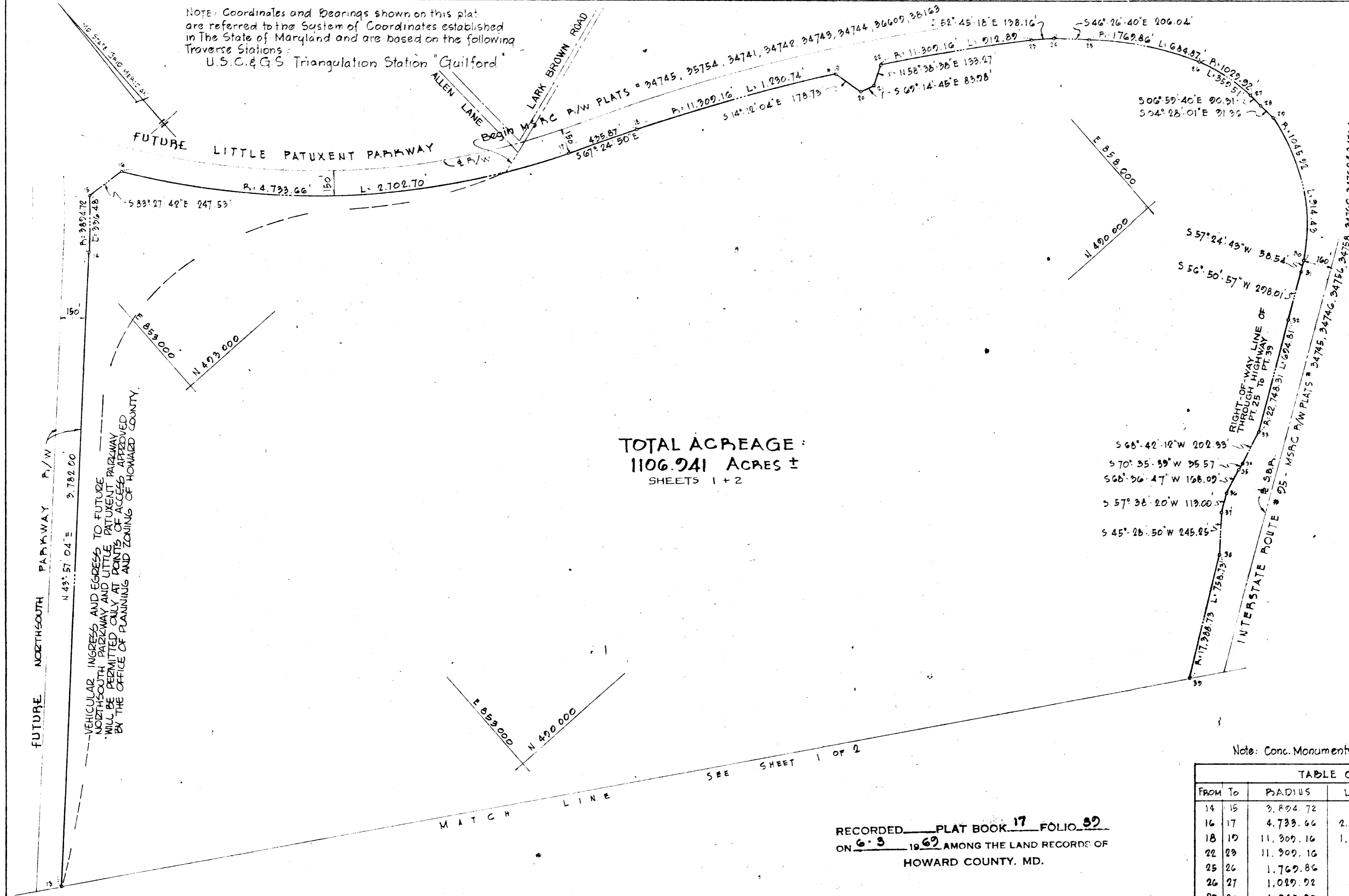
TOTAL ACREAGE:  
1106.941 ACRES ±  
SHEETS 1 + 2

NOTE: STORM DRAINAGE AND UTILITY EASEMENTS SHALL BE SHOWN ON SUPPLEMENTAL STORM DRAINAGE AND UTILITY EASEMENT PLATS AS REQUIRED BY THE OFFICE OF PLANNING AND ZONING OF HOWARD COUNTY.

Note: Conc. Monuments found or set on all corners

FROM	TO	RADIUS	LENGTH	CHORD BEARING	DISTANCE
14	15	3,804.72	336.48	N 41° 28' 34" E	336.38
16	17	4,733.66	2,702.70	S 51° 03' 27" E	2,666.14
18	19	11,309.16	1,230.74	S 64° 17' 47" E	1,230.13
22	23	11,309.16	912.89	S 57° 29' 28" E	912.64
25	26	1,769.86	684.87	S 36° 46' 26.5" E	680.60
26	27	1,029.92	359.51	S 15° 41' 18.5" E	357.69
29	30	1,045.92	914.43	S 29° 21' 29" W	885.58
32	33	22,748.31	694.81	S 56° 10' 35" W	694.78
38	39	17,388.73	758.73	S 55° 35' 55.5" W	758.67

RECORDED PLAT BOOK 17 FOLIO 39  
ON 6-3-69 AMONG THE LAND RECORDS OF  
HOWARD COUNTY, MD.



APPROVED: FOR PUBLIC WATER & PUBLIC SEWERAGE SYSTEMS, HOWARD COUNTY HEALTH DEPT.  
*John E. Mann* 6-3-69  
County Health Officer Date

APPROVED: HOWARD COUNTY OFFICE OF PLANNING AND ZONING.  
*[Signature]* 6-3-69  
Director Date

APPROVED: FOR PUBLIC WATER & PUBLIC SEWERAGE, STORM DRAINAGE SYSTEMS AND PUBLIC ROADS HOWARD COUNTY DEPARTMENT OF PUBLIC WORKS.  
*[Signature]* 6-3-69  
Director Date

\* For Human Consumption  
\*\* For Sanitary Sewerage

**SURVEYOR'S CERTIFICATE**

I, James Raymond Mask, hereby certify that the plan shown hereon is correct, and that stones and/or monuments marked thus ° are in place as shown.

I further certify that the requirements of Section 60-B, Article 17, of the Annotated Code of Maryland (as amended) as far as they relate to the making of this plat, have been complied with.

By enactment of The Howard County Council (Council Bill No. 4) LARK BROWN ROAD, which used to pass through the area of this plat, was closed Enacted 4/8/69

GREEN ASSOCIATES, INC.  
CONSULTING ENGINEERS  
BALTIMORE, MARYLAND

**OWNER'S CERTIFICATE**

We, the undersigned, owners of the property shown and described hereon, adopt this plan of subdivision in accordance with the requirements of Article 17 of The Annotated Code of Maryland (Flack 1947 Supplement).

OWNER  
MARYLAND ABSTRACT COMPANY, INC.  
By *[Signature]*  
J. Elmer Weisheit Jr., Pres.  
Teacher's Bldg.-Columbia, Md.

PLAT SHOWING PROPERTY LOCATED IN THE SIXTH ELECTION DISTRICT OF HOWARD COUNTY OWNED BY MARYLAND ABSTRACT COMPANY, INC.

LIBER-  
FOLIO-

SCALE: 1" = 400' DATE: 5-27-69 SHEET 2 OF 2