

**NOTE:**

- The coordinates shown here on are based on the Maryland State Grid System.
- All requirements to be in accordance with the approved Final Development Criteria for Phase 30A Revised, Village of Harper's Choice as recorded in the Land Records of Howard County in Plat Book 16, Folio 71 to 77.
- All utility and drainage easements shown hereon may be used for the installation and maintenance of sewer, drainage and other underground utility services as required by authorized agencies of Howard County.
- Open space is available for use as drainage easements in accordance with the approved Final Development Criteria for Phase 30A Revised, Village of Harper's Choice as recorded in the Land Records of Howard County in Plat Book 16, folio 71 to 77.

Total Roadway Area = 1.387 Acres  
 Total Lot Area = 3.421 Acres  
 Total Open Space Area = 0.022 Acres  
 Total Area This Sheet = 4.836 Acres  
 Total Number of Lots = 50

**GRANT OF EASEMENTS FOR WATER AND SEWER**

We, the Howard Homes, Inc., owner of the property shown and described hereon do hereby grant unto the Howard County Metropolitan Commission, its successors and assigns, the right to lay, construct and maintain water and sewer mains and service pipes in connection therewith in and under the right-of-way of the roads, streets and utility easements as shown hereon.

HOWARD HOMES, INC.  
 By: *Lee B. Rosenberg*  
 Lee B. Rosenberg, President

**CURVE DATA**

NO.	RADIUS	Δ	LENGTH	TANGENT	CHORD	CHORD BEARING
1	500.00	04°39'41"	40.68	20.35	40.67	S 57°46'16"W
2	441.97	13°21'06"	102.99	51.73	102.76	N 45°31'57"E
3	25.00	84°13'17"	36.75	22.60	33.53	N 85°40'52"W
4	95.00	46°25'47"	76.98	40.75	74.89	N 66°47'06"W
5	40.00	54°00'00"	37.70	20.38	36.32	N 63°00'00"E
6	25.00	142°12'30"	62.05	73.04	47.31	S 18°53'45"E
7	425.57	31°47'10"	236.09	121.17	233.08	N 36°18'55"E

**COORDINATES**

NO	NORTH	EAST	NO	NORTH	EAST
4	506277.00	832643.17	31	506573.89	833091.70
5	506348.98	832716.50	32	506462.50	833010.76
6	506508.15	832921.76	33	506466.01	832932.71
7	506695.96	833059.80	34	506504.76	832317.39
8	506543.98	833268.97	35	506264.20	833364.83
9	506508.72	83331.751	36	506371.18	833217.59
10	506379.40	833495.49	37	506406.45	833169.05
11	506249.63	833495.49	38	506456.41	833100.28
12	506227.95	833461.09	39	506370.01	833037.50
15	506277.01	833075.00	40	506370.01	832887.21
22	506446.01	832978.40	41	506399.53	832818.38
28	506337.02	833417.73	42	506402.06	832784.94
29	506443.99	833270.49	57	506112.27	833293.16
30	506479.26	833221.95	58	506255.83	833133.78
			59	506446.01	832974.40
			60	506460.01	832974.40

- LEGEND**
- 3-C Lot Number
  - Ⓢ Coordinate Number
  - Ⓢ Curve Number
  - #5534 House Number

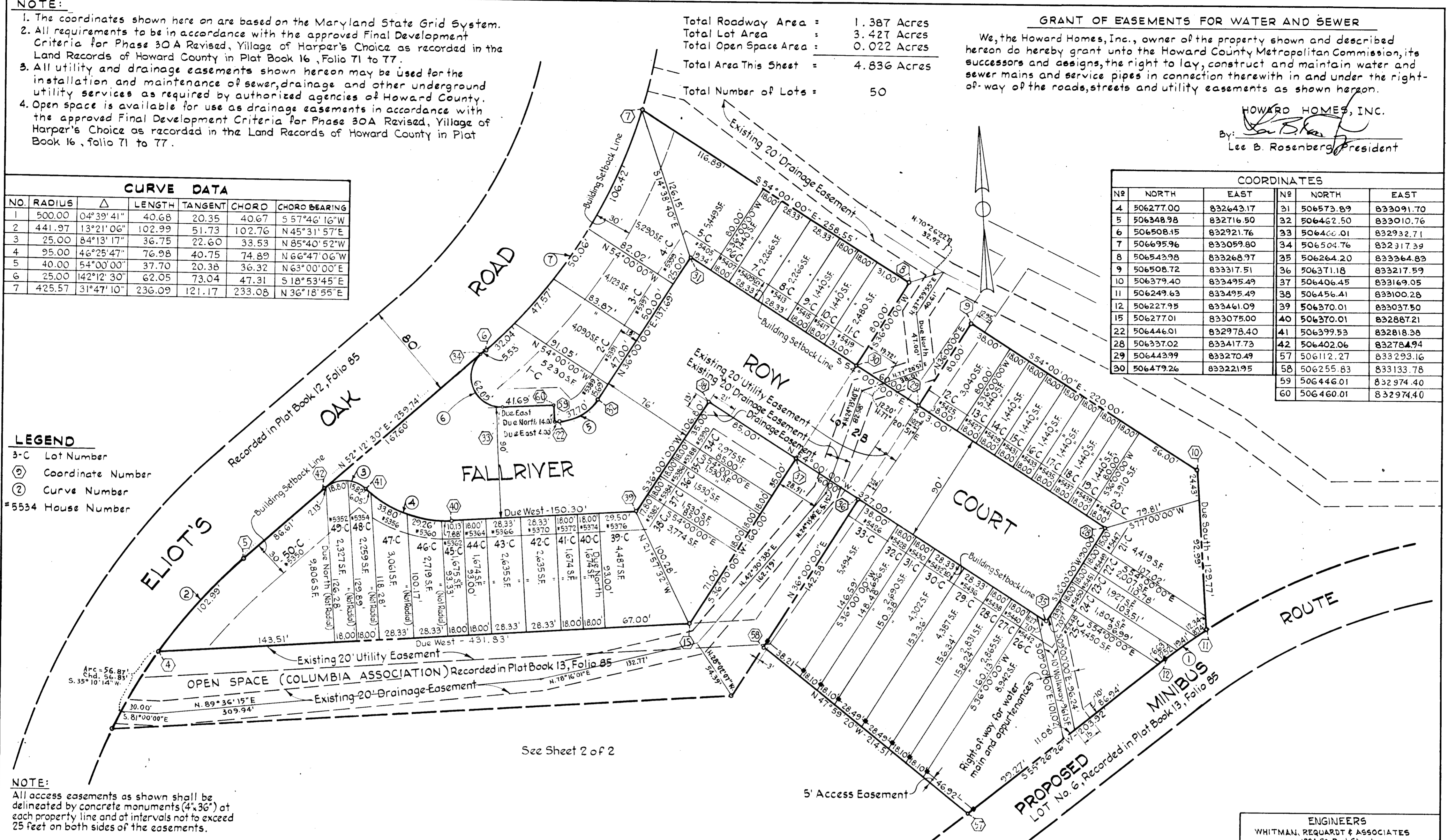
**NOTE:**  
 All access easements as shown shall be delineated by concrete monuments (4"x36") at each property line and at intervals not to exceed 25 feet on both sides of the easements.

APPROVED FOR PUBLIC WATER AND PUBLIC SEWERAGE SYSTEMS, HOWARD COUNTY HEALTH DEPARTMENT  
 COUNTY HEALTH OFFICER \_\_\_\_\_ DATE \_\_\_\_\_  
 APPROVED HOWARD COUNTY OFFICE OF PLANNING AND ZONING.  
 DIRECTOR \_\_\_\_\_ DATE \_\_\_\_\_  
 APPROVED FOR PUBLIC WATER AND PUBLIC SEWERAGE, STORM DRAINAGE SYSTEMS AND PUBLIC ROADS.  
 HOWARD COUNTY DEPARTMENT OF PUBLIC WORKS.  
 DIRECTOR \_\_\_\_\_ DATE \_\_\_\_\_

**OWNERS' CERTIFICATE**  
 We, Howard Homes, Inc., owners of the property shown and described hereon adopt this plan of subdivision, and reserve the fee simple title to the beds of the streets and/or roads shown hereon, and in consideration of the approval of the plat by The Planning Commission of Howard County, Maryland, we ourselves, our heirs, or assigns do hereby grant unto the Board of County Commissioners of Howard County, the right and option to acquire for the consideration of one dollar, the fee simple title to the beds of the streets and/or roads shown hereon within the period of five years from the date of the recording of this plat among the Land Records of Howard County, Maryland.  
 Witness our hand and seal this 31st day of January, 1969  
 By: *Lee B. Rosenberg*  
 Lee B. Rosenberg, President.

**SURVEYORS CERTIFICATE**  
 I, Kenneth A. McCord, hereby certify that the plan shown hereon is correct, that it is a subdivision of part of the land which by deed dated 1/21/69 and recorded among the Land Records of Howard County, Maryland in Liber 503 at Folio 18 was granted and conveyed by Howard Research and Development Corporation to Howard Homes, Inc., and that stones and monuments marked thus ■ are in place as shown.  
 I further certify that the requirements of Section 60, Article 17, of the Annotated Code of Maryland (as amended) as far as they relate to the making of this plat have been complied with.  
 Kenneth A. McCord, Reg. P.E. & L.S. No. 1974

RECORDED IN PLAT BOOK 12 FOLIO 21 on 1-18-1969 among the Land Records of Howard County, Maryland.  
 COLUMBIA ELECTION DISTRICT No. 5 HOWARD COUNTY, MARYLAND  
 VILLAGE OF HARPER'S CHOICE  
 SECTION 3, AREA 2  
 RESUBDIVISION OF LOTS 2B, 3 & 4  
 SHEET 1 OF 2  
 Date: February 3, 1969 Scale: 1"=50'

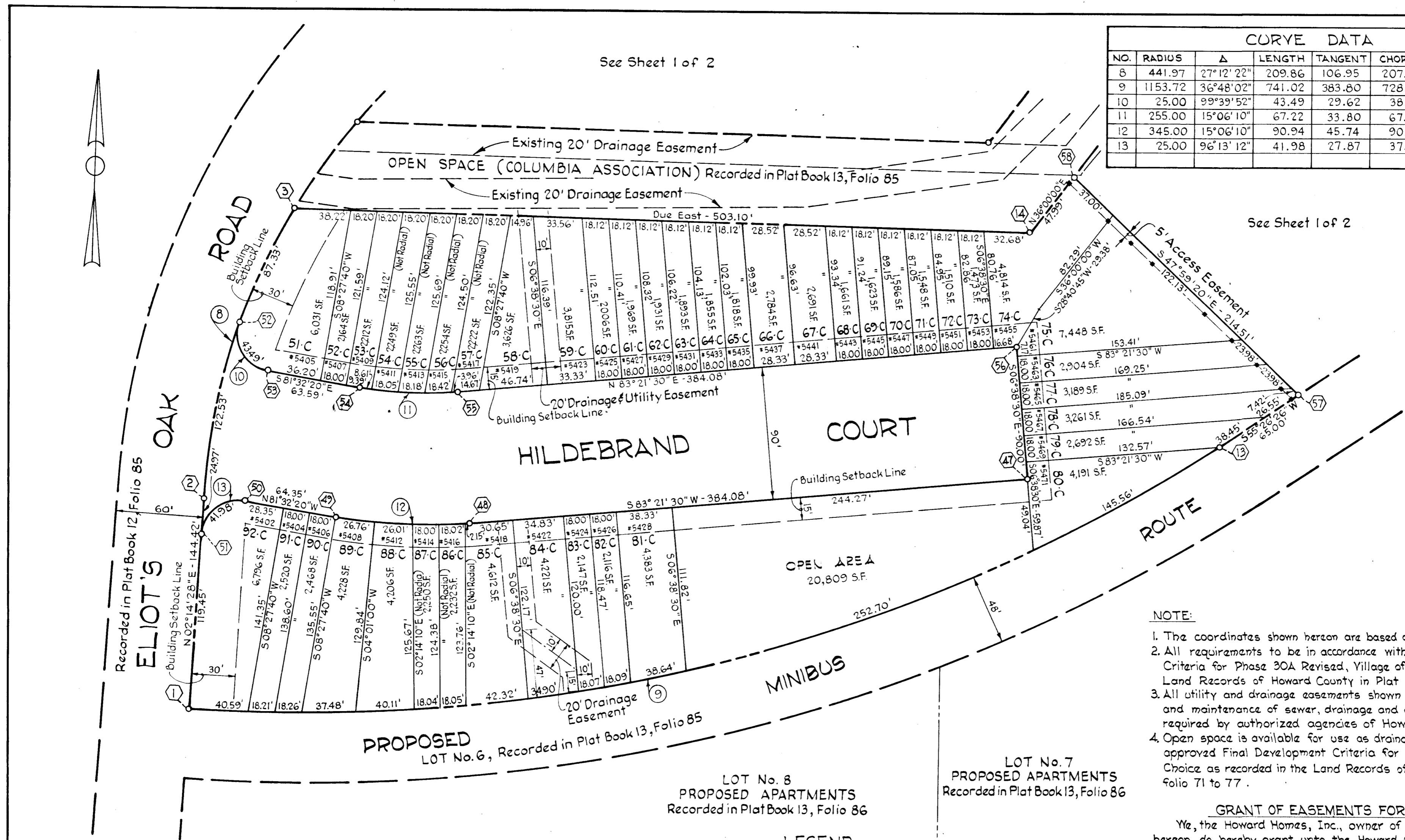


See Sheet 1 of 2

CURVE DATA

NO.	RADIUS	Δ	LENGTH	TANGENT	CHORD	CHORD BEARING
8	441.97	27°12'22"	209.86	106.95	207.90	N15°50'39"E
9	1153.72	36°48'02"	741.02	383.80	728.35	S73°50'27"W
10	25.00	99°39'52"	43.49	29.62	38.21	S31°42'24"E
11	255.00	15°06'10"	67.22	33.80	67.02	S89°05'25"E
12	345.00	15°06'10"	90.94	45.74	90.68	N89°05'25"W
13	25.00	96°13'12"	41.98	27.87	37.22	S50°21'04"W

COORDINATES		
NR	NORTH	EAST
1	505872.69	832540.06
2	506017.00	832545.71
3	506217.00	832602.47
13	506075.40	833239.63
14	506217.00	833105.57
47	506049.31	833109.21
48	506004.89	832727.70
49	506006.33	832637.04
50	506015.80	832573.39
51	505992.05	832544.73
52	506137.21	832567.30
53	506104.71	832587.38
54	506095.35	832650.28
55	506094.29	832717.30
56	506138.71	833098.80
57	506112.27	833293.16
58	506255.83	833133.78



- NOTE:
- The coordinates shown hereon are based on the Maryland State Grid System.
  - All requirements to be in accordance with the approved Final Development Criteria for Phase 30A Revised, Village of Harper's Choice as recorded in the Land Records of Howard County in Plat Book 16, Folio 71 to 77.
  - All utility and drainage easements shown hereon may be used for the installation and maintenance of sewer, drainage and other underground utility services as required by authorized agencies of Howard County.
  - Open space is available for use as drainage easements in accordance with the approved Final Development Criteria for Phase 30A Revised, Village of Harper's Choice as recorded in the Land Records of Howard County in Plat Book 16, folio 71 to 77.

GRANT OF EASEMENTS FOR WATER AND SEWER

Ye, the Howard Homes, Inc., owner of the property shown and described hereon do hereby grant unto the Howard County Metropolitan Commission, its successors and assigns, the right to lay, construct and maintain water and sewer mains and service pipes in connection therewith in and under the right-of-way of the roads, streets and utility easements as shown hereon.

HOWARD HOMES, INC.  
 By: *Lee B. Rosenberg*  
 Lee B. Rosenberg, President

ENGINEERS  
 WHITMAN, REQUARDT & ASSOCIATES  
 1304 St. Paul Street  
 Baltimore, Maryland 21202

Total Roadway Area = 1.159 Acres  
 Total Lot Area = 2.843 Acres  
 Open Area = 0.478 Acres  
 Total Area This Sheet = 4.480 Acres  
 Total Number of Lots = 42

LEGEND

- 3-C Lot Number
- ④ Coordinate Number
- ② Curve Number
- \*5534 House Number

NOTE:  
 All access easements as shown shall be delineated by concrete monuments (4"x36") at each property line and at intervals not to exceed 25 feet on both sides of the easements.

APPROVED: FOR PUBLIC WATER AND PUBLIC SEWERAGE SYSTEMS. HOWARD COUNTY HEALTH DEPARTMENT  
 COUNTY HEALTH OFFICER \_\_\_\_\_ DATE \_\_\_\_\_  
 APPROVED: HOWARD COUNTY OFFICE OF PLANNING AND ZONING.  
 \_\_\_\_\_ DATE \_\_\_\_\_  
 DIRECTOR \_\_\_\_\_ DATE \_\_\_\_\_  
 APPROVED: FOR PUBLIC WATER AND PUBLIC SEWERAGE, STORM DRAINAGE SYSTEMS AND PUBLIC ROADS.  
 HOWARD COUNTY DEPARTMENT OF PUBLIC WORKS.  
 \_\_\_\_\_ DATE 4-7-69  
 DIRECTOR \_\_\_\_\_ DATE \_\_\_\_\_

OWNERS CERTIFICATE:  
 We, Howard Homes, Inc., owners of the property shown and described hereon adopt this plan of subdivision, and reserve the fee simple title to the beds of the streets and/or roads shown hereon, and in consideration of the approval of the plat by The Planning Commission of Howard County, Maryland, we ourselves, our heirs or assigns do hereby grant unto the Board of County Commissioners of Howard County, the right and option to acquire for the consideration of one dollar, the fee simple title to the beds of the streets and/or roads shown hereon within the period of five years from the date of the recording of this plat among the Land Records of Howard County, Maryland.  
 Witness our hand and seal this 31<sup>st</sup> day of January, 1969  
 By: *Lee B. Rosenberg*  
 Lee B. Rosenberg, President.

SURVEYORS CERTIFICATE:  
 I, Kenneth A. McCord, hereby certify that the plan shown hereon is correct, that it is a subdivision of part of the land which by deed dated 1/21/69 and recorded among the Land Records of Howard County, Maryland in Liber 503 at Folio 18 was granted and conveyed by Howard Research and Development Corporation to Howard Homes, Inc., and that stones and monuments marked thus ■ are in place as shown.  
 I, further certify that the requirements of Section 60, Article 17, of the Annotated Code of Maryland (as amended) as far as they relate to the making of this plat have been complied with.  
 \_\_\_\_\_  
 (Kenneth A. McCord) Reg. P.E. & L.S. No. 1974

RECORDED IN PLAT BOOK 17 FOLIO 22 on 4-18-1969 among the Land Records of Howard County, Maryland.

COLUMBIA  
 ELECTION DISTRICT N° 5  
 HOWARD COUNTY, MARYLAND

VILLAGE OF HARPER'S CHOICE

SECTION 3, AREA 2  
 RESUBDIVISION OF LOTS 2B, 3 & 4  
 SHEET 2 OF 2

Date: February 3, 1969 Scale: 1"=50'