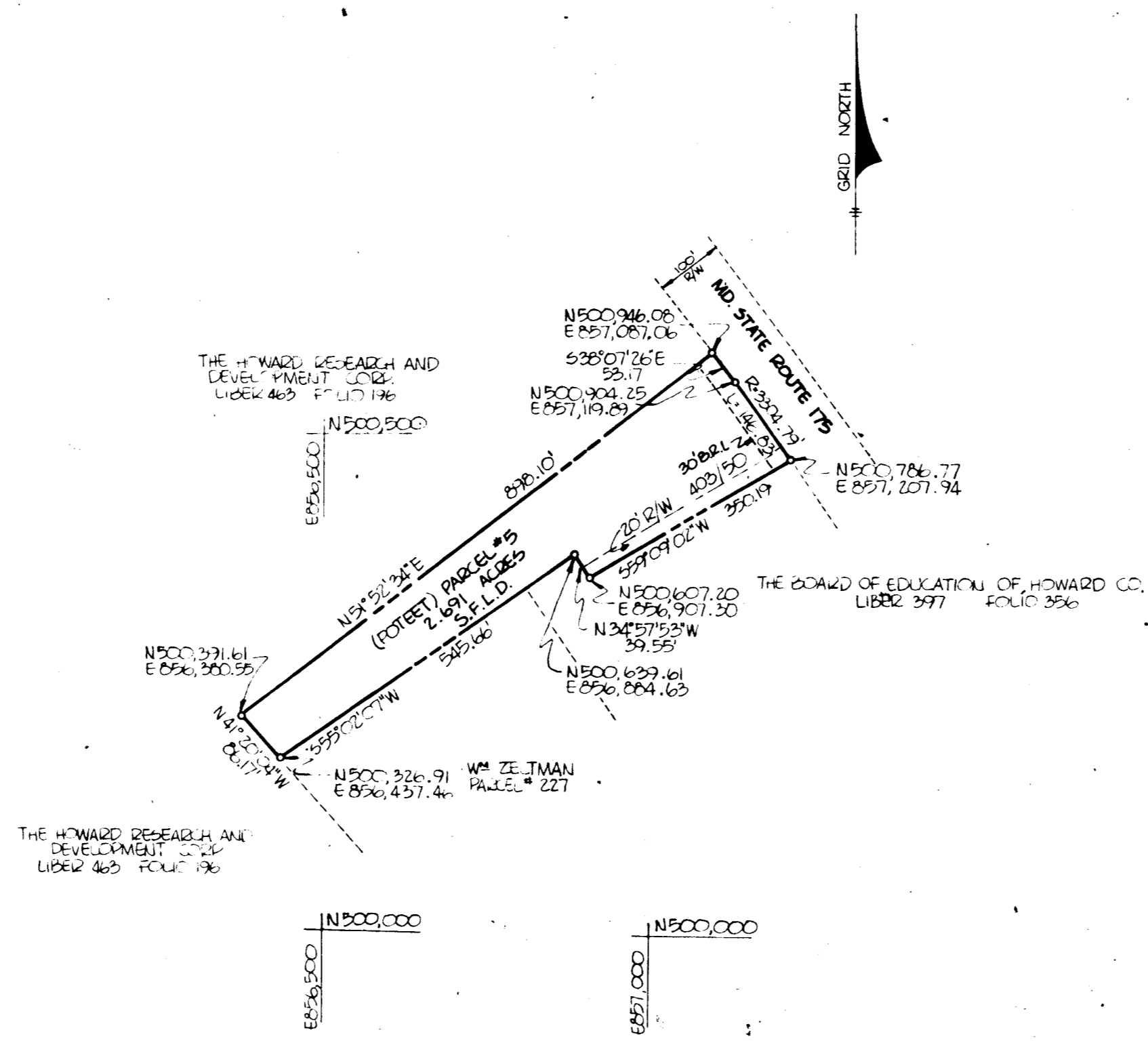


VICINITY MAP  
SCALE 1" = 800'



NOTE:  
THE PLAN SHOWN HEREON IS CORRECT AS  
COMPLYING WITH THE REQUIREMENTS OF  
FINAL DEVELOPMENT PLAN PHASE 64  
RECORDED IN PLAT BOOK 16 FOLIO 166

RECEIVED  
JUL 28 1969  
DIVISION OF LAND  
DEVELOPMENT  
OF HOWARD COUNTY

(POTTEET) PARCEL # 5  
PETITIONER AND OWNER  
THE HOWARD RESEARCH AND DEVELOPMENT CORPORATION  
THE VILLAGE OF CROSS KEYS  
BALTIMORE, MARYLAND 21210

# COLUMBIA

FINAL DEVELOPMENT PLAN PHASE SIXTY-FOUR  
ELECTION DISTRICT HOWARD COUNTY, MD.  
SCALE 1" = 200' APRIL, 1969 SHEET 1 OF 1

PREPARED AS TO SHEETS 1 TO 1  
IN ACCORDANCE WITH THE ZONING REGULATIONS  
OF HOWARD COUNTY  
ADOPTED MAY 16, 1961 AND AS  
AMENDED MAY 27, 1965

*Bernard Thaddeus*  
LAND SURVEYOR'S SIGNATURE

BOARD OF COUNTY COMM. B. C. C. CASE 412  
RESOLUTION APPROVED AUGUST 10, 1965

HOWARD COUNTY PLANNING BOARD

H. C. P. B. EXECUTIVE SEC. DATE H. C. P. B. CHAIRMAN DATE

252

7-9 69 16 125