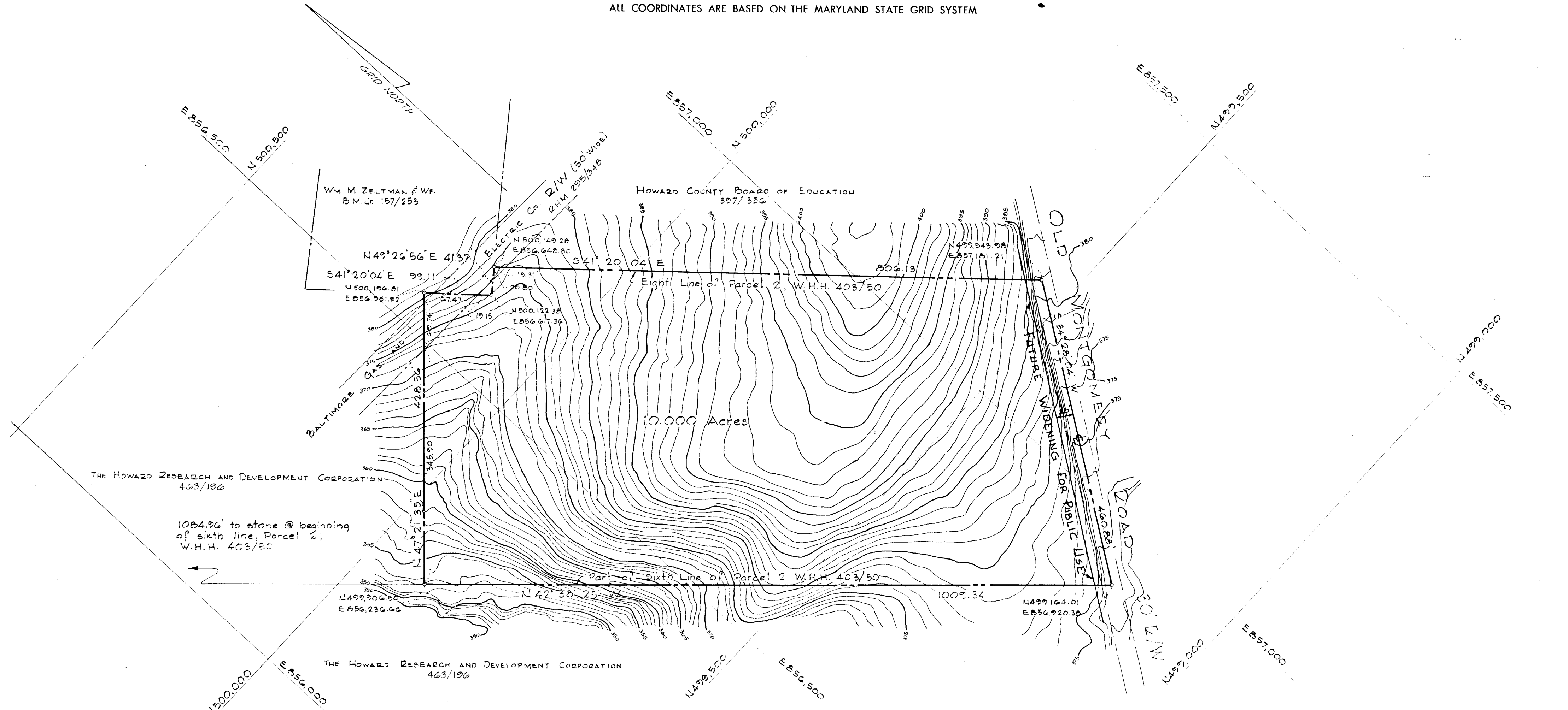


# COLUMBIA

ALL COORDINATES ARE BASED ON THE MARYLAND STATE GRID SYSTEM



**TABULATIONS**

TOTALS	ACREAGE
All lots	= 10.000
R.O.W. Arterial	=
Local	=
Open Space	=
Total	= 10.000
Lots this plat (incl. open space)	= 1

440

**SURVEYOR'S, ENGINEER'S and OWNER'S CERTIFICATES**

APPROVED: HOWARD COUNTY HEALTH DEPT.  
FOR PRIVATE WATER & PRIVATE SEWERAGE SYSTEM

*[Signature]* COUNTY HEALTH OFFICER  
DATE: *1-21-69*

APPROVED: HOWARD COUNTY PLANNING COMM.

*[Signature]* Chairman  
Date: *1-16-69*

*[Signature]* Director  
Date: *1-21-69*

APPROVED: HOWARD COUNTY ROADS DEPARTMENT

*[Signature]* Roads Superintendent  
Date: *1-21-69*

APPROVED: HOWARD COUNTY METROPOLITAN COMM.

*[Signature]* Chief Engineer  
Date: *1-21-69*

The undersigned, owner of the property shown on this Plat, grants unto, (1) the Howard County Metropolitan Commission, its successors and assigns, the right to lay, construct and maintain water and sewer mains and laterals therefor in and under all road and street rights-of-way as shown hereon; (2) further, it adopts this plan of subdivision and reserves the fee simple title to the beds of the streets and/or roads hereon, except however, for one dollar consideration, it herewith grants the right and option to the Board of County Commissioners of Howard County to acquire (within a period of five years commencing with the date of recording of this plat among the Land Records of Howard County) the fee simple title to the beds of the streets and/or roads shown hereon, together with such adjacent land, if any, as may be shown on this plat as areas designated for the installation of street lighting facilities, reserving, however, unto Grantor, its successors and assigns, the right in perpetuity to lay, construct, enlarge, maintain and use cables and/or conduits for electrical transmission and other purposes beneath the surface of the lands subject to the rights granted herein to said Board of County Commissioners. The undersigned certifies that the subdivision plan shown hereon is correct as complying with the requirements of Final Development Plan Phase 63 recorded in Plat Book 16 folios 02 to ---, each inclusive, with all Open Space shown thereon to be used for drainage easements, if necessary, and the requirements of Article 17, Section 60 of the annotated code of Maryland concerning the making of this Plat and setting of markers have been complied with. The land shown hereon is a part of the land which by deed dated December 13, 1966 and recorded among the Land Records of Howard County, Maryland in Liber 463 folio 196 was granted and conveyed by C. Aileen Ames to the Howard Research and Development Corporation.

PROFESSIONAL LAND SURVEYOR (By) *[Signature]* PURDUM & JESCHKE Reg. No. *[Number]*  
24 Park Ave., Ellicott City, Md.

PROFESSIONAL ENGINEER (By) *[Signature]* PURDUM & JESCHKE Reg. No. *[Number]*  
24 Park Ave., Ellicott City, Md.

OWNER (By) *[Signature]* THE HOWARD RESEARCH AND DEVELOPMENT CORPORATION Auth. Agent  
THE VILLAGE OF CROSS KEYS, BALTIMORE, MARYLAND 21210

RECORDED IN PLAT BOOK 15 FOLIO 88  
on January 21, 1969 among The  
Land Records of Howard County, Maryland.

**COLUMBIA**  
PART OF THE ZELTMAN FARM  
THE HOWARD RESEARCH AND DEVELOPMENT CORPORATION  
SECTION ---  
AREA ---  
Sheet 1 of 1  
Sixth Election District of Howard County, Md.  
Scale: 1" = 100' Date: 24 July, 1968