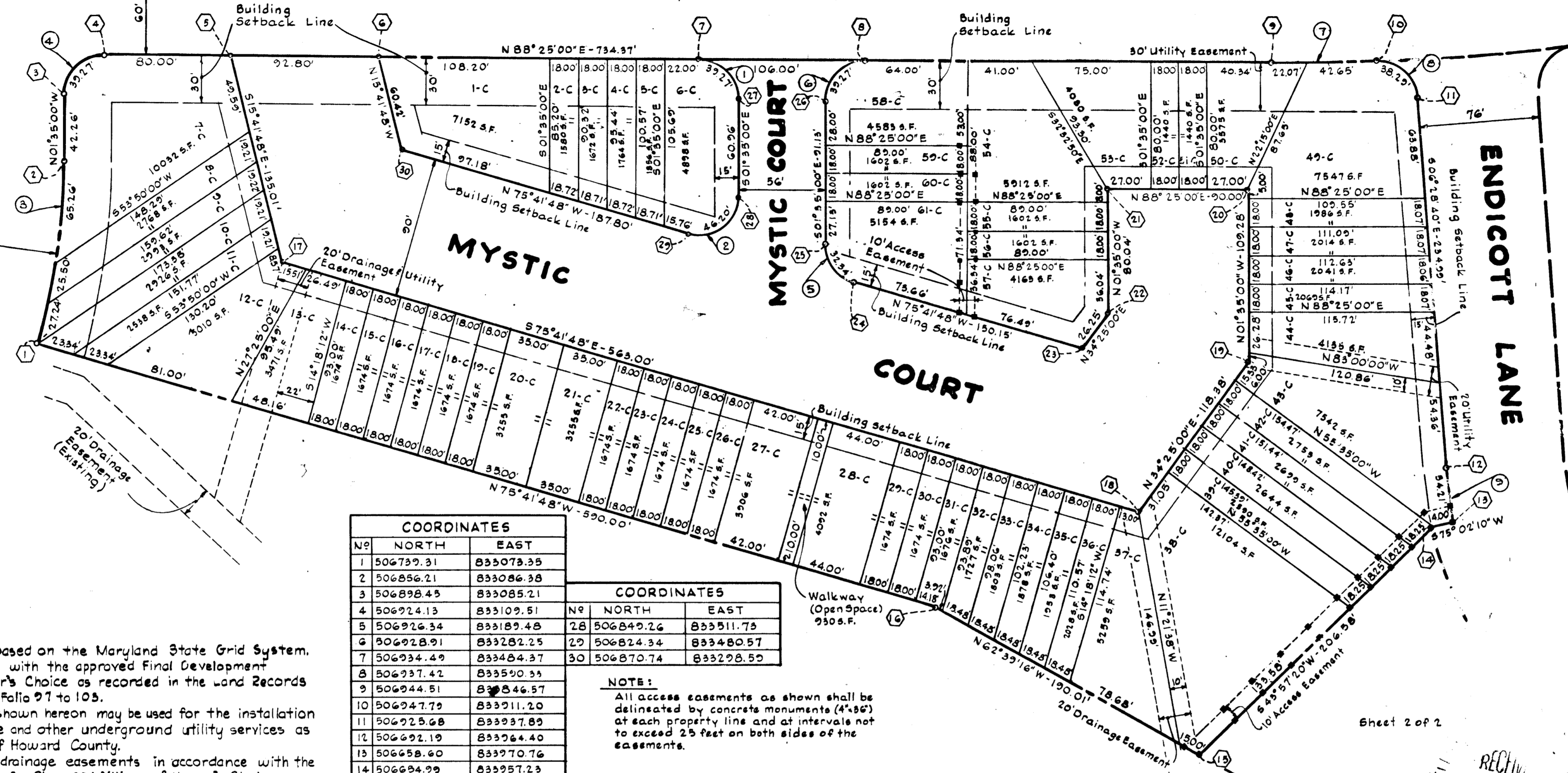


HESPERUS DRIVE
Area 2, Section 1

ELIOT'S OAK ROAD

ENDICOTT LANE



LEGEND

- 3-A Lot Number
- Ⓜ Coordinate Number
- Ⓒ Curve Number
- #5534 House Number

NOTE:

1. The coordinates shown hereon are based on the Maryland State Grid System.
2. All requirements to be in accordance with the approved Final Development Criteria for Phase 30A, Village of Harper's Choice as recorded in the Land Records of Howard County in Plat Book 14, Folio 97 to 103.
3. All utility and drainage easements shown hereon may be used for the installation and maintenance of sewer, drainage and other underground utility services as required by authorized agencies of Howard County.
4. Open space is available for use as drainage easements in accordance with the approved Final Development Criteria for Phase 30A, Village of Harper's Choice as recorded in the Land Records of Howard County in Plat Book 14, folios 97 to 103.

GRANT OF EASEMENTS FOR WATER AND SEWER

We, the Howard Homes, Inc., Owner of the property shown and described hereon do hereby grant unto the Howard County Metropolitan Commission, its successors and assigns, the right to lay, construct and maintain water and sewer mains and service pipes in connection therewith in and under the right-of-way of the roads, streets and utility easements as shown hereon.

HOWARD HOMES, INC.

By *Lee B. Rosenberg*
Lee B. Rosenberg, President

COORDINATES	
NO	EAST
1	833073.35
2	833086.38
3	833085.21
4	833109.51
5	833189.48
6	833282.25
7	833404.37
8	833590.33
9	833846.57
10	833911.20
11	833937.89
12	833964.40
13	833970.76
14	833957.23
15	833813.84
16	833645.07
17	833226.01
18	833711.56
19	833888.47
20	833895.45
21	833745.48
22	833747.69
23	833732.86
24	833587.36
25	833568.95
26	833566.03
27	833510.05

COORDINATES	
NO	EAST
28	833511.73
29	833480.57
30	833298.59

NOTE:

All access easements as shown shall be delineated by concrete monuments (4" x 6") at each property line and at intervals not to exceed 25 feet on both sides of the easements.

CURVE DATA					
NO.	RADIUS	Δ	LENGTH	TANGENT	CHORD BEARING
1	25.00'	90°00'00"	39.27'	25.00'	S46°35'00"E
2	25.00'	105°53'12"	46.20'	33.11'	S9°20'11"W
3	425.57'	15°53'12"	118.00'	59.32'	N06°21'37"E
4	25.00'	90°00'00"	39.27'	25.00'	N43°25'02"E
5	25.00'	74°06'48"	32.34'	18.88'	N38°38'25"W
6	25.00'	90°00'00"	39.27'	25.00'	N43°25'00"E
7	1401.88'	02°38'48"	64.72'	32.37'	N81°05'38"E
8	25.00'	87°45'03"	38.29'	24.04'	S50°21'10"E
9	231.00'	08°25'10"	34.21'	17.14'	S10°43'17"E

SURVEYORS CERTIFICATE:

I, Kenneth A. McCord, hereby certify that the plan shown hereon is correct, that it is a subdivision of part of the land which by deed dated 9/18/68 and recorded among the Land Records of Howard County, Maryland in Liber 495 at Folio 464 was granted and conveyed by Howard Research and Development Corporation to Howard Homes, Inc., and that stones and monuments marked thus ■ are in place as shown.

I, further certify that the requirements of Section 60, Article 17, of the Annotated Code of Maryland (as amended) as far as they relate to the making of this plat have been complied with.

By *Kenneth A. McCord*
(Kenneth A. McCord) Reg. P.E. & L.S. No. 1974.

OWNERS CERTIFICATE:

We, Howard Homes, Inc., owners of the property shown and described hereon adopt this plan of subdivision, and reserve the fee simple title to the beds of the streets and/or roads shown hereon, and in consideration of the approval of the plat by The Planning Commission of Howard County, Maryland, we ourselves, our heirs or assigns do hereby grant unto the Board of County Commissioners of Howard County, the right and option to acquire for the consideration of one dollar, the fee simple title to the beds of the streets and/or roads shown hereon within the period of five years from the date of the recording of this plat among the Land Records of Howard County, Maryland.

Witness our hand and seal this 23rd day of August 1968.

By *Lee B. Rosenberg*
Lee B. Rosenberg, President

RECORDED IN PLAT BOOK 15 FOLIO 42 on 10/11, 1968.
among the Land Records of Howard County, Maryland.

COLUMBIA
ELECTION DISTRICT NO. 5
HOWARD COUNTY, MARYLAND

VILLAGE OF HARPER'S CHOICE

SECTION 3, AREA 2
RESUBDIVISION OF LOT 1

SHEET 1 OF 2

Date: August 22, 1968

Scale: 1" = 50'



Total Roadway Area = 1.768 Acres
Total Lot Area = 4.519 Acres
Total Open Space Area = 0.021 Acres
Total Area This Sheet = 6.108 Acres

Total Number of Lots = 61 on sheet 1 of 2

20' Drainage Easement (Existing)

APPROVED FOR PUBLIC WATER AND PUBLIC SEWERAGE SYSTEMS, HOWARD COUNTY HEALTH DEPARTMENT	Date: <i>10-3-68</i>
County Health Officer	
APPROVED: HOWARD COUNTY PLANNING COMMISSION	Date: <i>10-9-68</i>
Chairman	
Director	
APPROVED: HOWARD COUNTY ROADS DEPARTMENT	Date: <i>10-3-68</i>
Roads Superintendent	
APPROVED: HOWARD COUNTY METROPOLITAN COMMISSION	Date: <i>10-3-68</i>
Chief Engineer	

11 B

1-60-63

COORDINATES		
No.	NORTH	EAST
10	506947.79	833911.20
11	506925.68	833937.89
12	506922.19	833964.40
13	506958.60	833970.76
14	506954.99	833957.23
15	506906.27	833813.84
31	506379.99	834058.01
32	506374.99	834250.01
33	506459.98	834345.01
34	506613.01	834383.44
35	506619.04	834279.65
36	506651.02	834174.40
37	506782.25	834112.74
38	506851.08	834125.50
39	506899.53	834168.83
40	506984.15	834141.06
41	506962.36	834034.14
42	506934.87	834013.33
43	506700.76	834039.91
44	506569.94	834148.87
45	506542.04	834240.72
46	506485.92	834214.56
47	506483.83	834122.70

CURVE DATA						
No.	Radius	Δ	Length	Tangent	Chord	Chord Brg.
8	25.00'	87°45'03"	38.29'	24.04'	34.66'	N50°21'10"W
9	231.00'	08°29'10"	34.21'	17.14'	34.18'	S10°43'17"E
10	245.00'	58°08'13"	248.60'	136.19'	238.07'	N44°01'56"W
11	155.00'	66°37'23"	180.23'	101.86'	170.25'	S39°47'22"E
12	25.00'	87°11'17"	38.04'	23.80'	34.48'	S37°06'58"W
13	1401.88'	04°27'39"	109.15'	54.60'	109.12'	N78°28'48"E
14	1401.88'	05°03'40"	123.83'	61.96'	123.79'	N83°14'27"E

LEGEND

- 74-C Lot Number
- Ⓢ Coordinate Number
- Ⓣ Curve Number
- *5458 House Number

NOTE:

- The coordinates shown hereon are based on the Maryland State Grid System.
- All requirements to be in accordance with the approved Final Development Criteria for Phase 3A, Village of Harper's Choice as recorded in the Land Records of Howard County in Plat Book 14, Folios 97 to 103.
- All utility and drainage easements shown hereon may be used for the installation and maintenance of sewer, drainage and other underground utility services as required by authorized agencies of Howard County.
- Open space is available for use as drainage easements in accordance with the approved Final Development Criteria for Phase 30A, Village of Harper's Choice as recorded in the Land Records of Howard County in Plat Book 14, Folios 97 to 103.

GRANT OF EASEMENTS FOR WATER AND SEWER

We, the Howard Homes, Inc., Owner of the property shown and described hereon do hereby grant unto the Howard County Metropolitan Commission, its successors and assigns, the right to lay, construct and maintain water and sewer mains and service pipes in connection therewith in and under the right-of-way of the roads, streets and utility easements as shown hereon.

HOWARD HOMES, INC.

By Lee B. Rosenberg
Lee B. Rosenberg, President

OWNERS CERTIFICATE:

We, Howard Homes, Inc., Owners of the property shown and described hereon adopt this plan of subdivision, and reserve the fee simple title to the beds of the streets and/or roads shown hereon, and in consideration of the approval of the plat by The Planning Commission of Howard County, Maryland, we ourselves, our heirs, or assigns do hereby grant unto the Board of County Commissioners of Howard County, the right and option to acquire for the consideration of one Dollar, the fee simple title to the beds of the streets and/or roads shown hereon within the period of five years from the date of the recording of this plat among the Land Records of Howard County, Maryland.

Witness our hand and seal this 23rd day of August 1968.

By Lee B. Rosenberg
Lee B. Rosenberg, President

SURVEYORS CERTIFICATE:

I, Kenneth A. McCord, hereby certify that the plan shown hereon is correct, that it is a subdivision of part of the land which by deed dated 9/18/68 and recorded among the Land Records of Howard County, Maryland in Liber 495 at Folio 464 was granted and conveyed by Howard Research and Development Corporation to Howard Homes, Inc., and that stakes and monuments marked thus ■ are in place as shown.

I, further certify that the requirements of Section 60, Article 17, of the Annotated Code of Maryland (as amended) as far as they relate to the making of this plat have been complied with.

By Kenneth A. McCord
(Kenneth A. McCord) Reg. P.E. & L.S. No. 1974

Recorded in PLAT BOOK 15 FOLIO 10 on 10/11, 1968 among the Land Records of Howard County, Maryland.

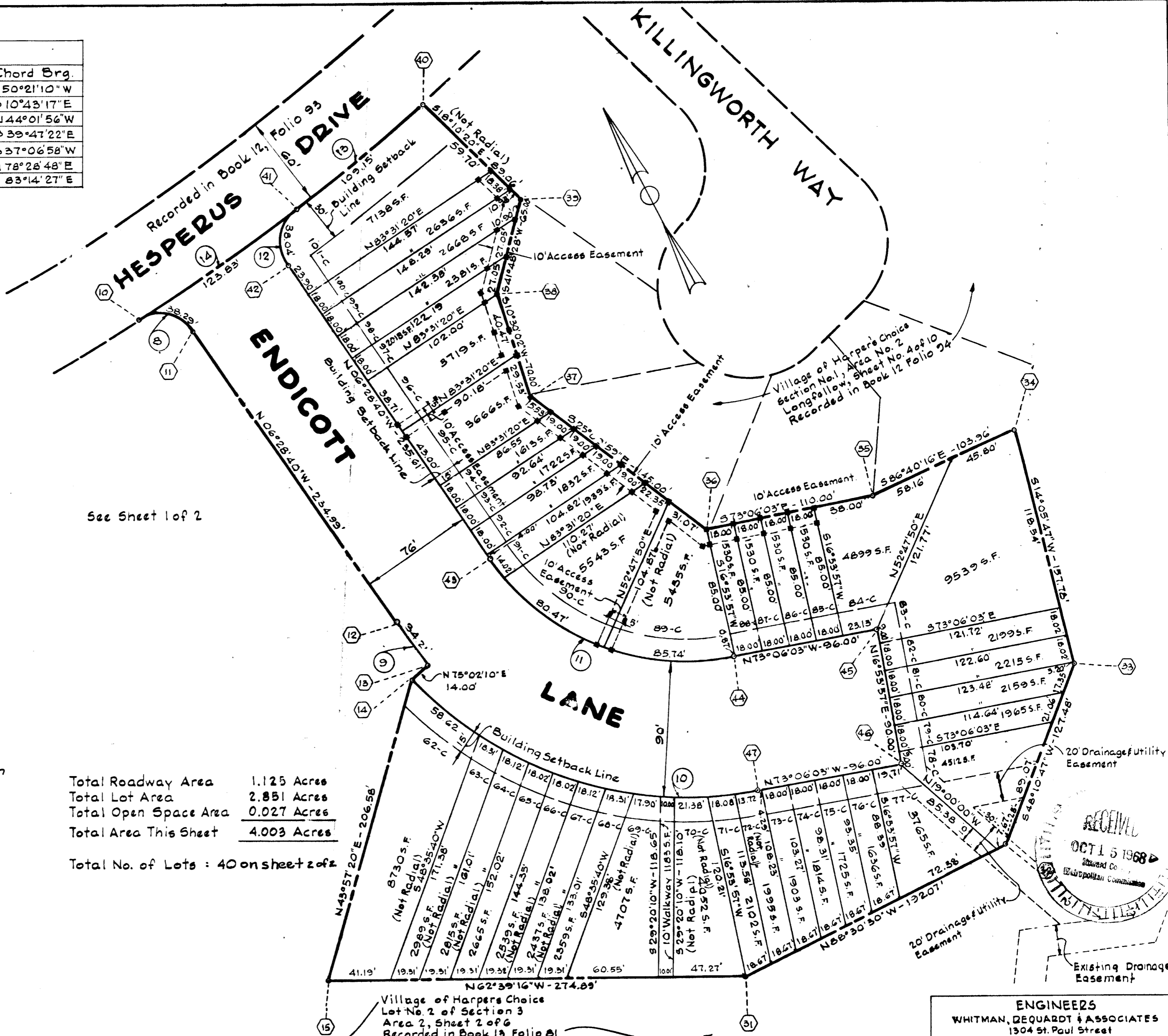
COLUMBIA
ELECTION DISTRICT NO. 5
HOWARD COUNTY, MARYLAND

VILLAGE OF HARPER'S CHOICE

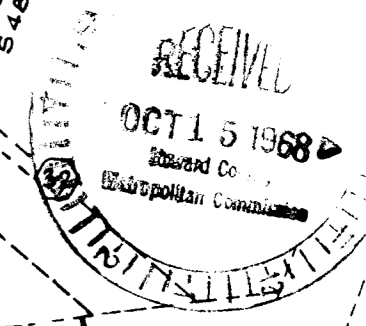
SECTION 3, AREA 2
RESUBDIVISION OF LOT 1
SHEET 2 OF 2

Date August 22, 1968

Scale: 1" = 50'



Total Roadway Area 1.125 Acres
Total Lot Area 2.851 Acres
Total Open Space Area 0.027 Acres
Total Area This Sheet 4.003 Acres
Total No. of Lots : 40 on sheet 2 of 2



ENGINEERS
WHITMAN, DEQUARDT & ASSOCIATES
1304 St. Paul Street
Baltimore, Maryland 21202

APPROVED FOR PUBLIC WATER AND PUBLIC SEWERAGE SYSTEMS, HOWARD COUNTY HEALTH DEPARTMENT	DATE 11-2-1968
COUNTY HEALTH OFFICER	DATE
APPROVED: HOWARD COUNTY PLANNING COMM.	DATE
CHAIRMAN	DATE
DIRECTOR	DATE
APPROVED: HOWARD COUNTY ROADS DEPARTMENT	DATE
ROADS SUPERINTENDENT	DATE
APPROVED: HOWARD COUNTY METROPOLITAN COMM.	DATE
CHIEF ENGINEER	DATE