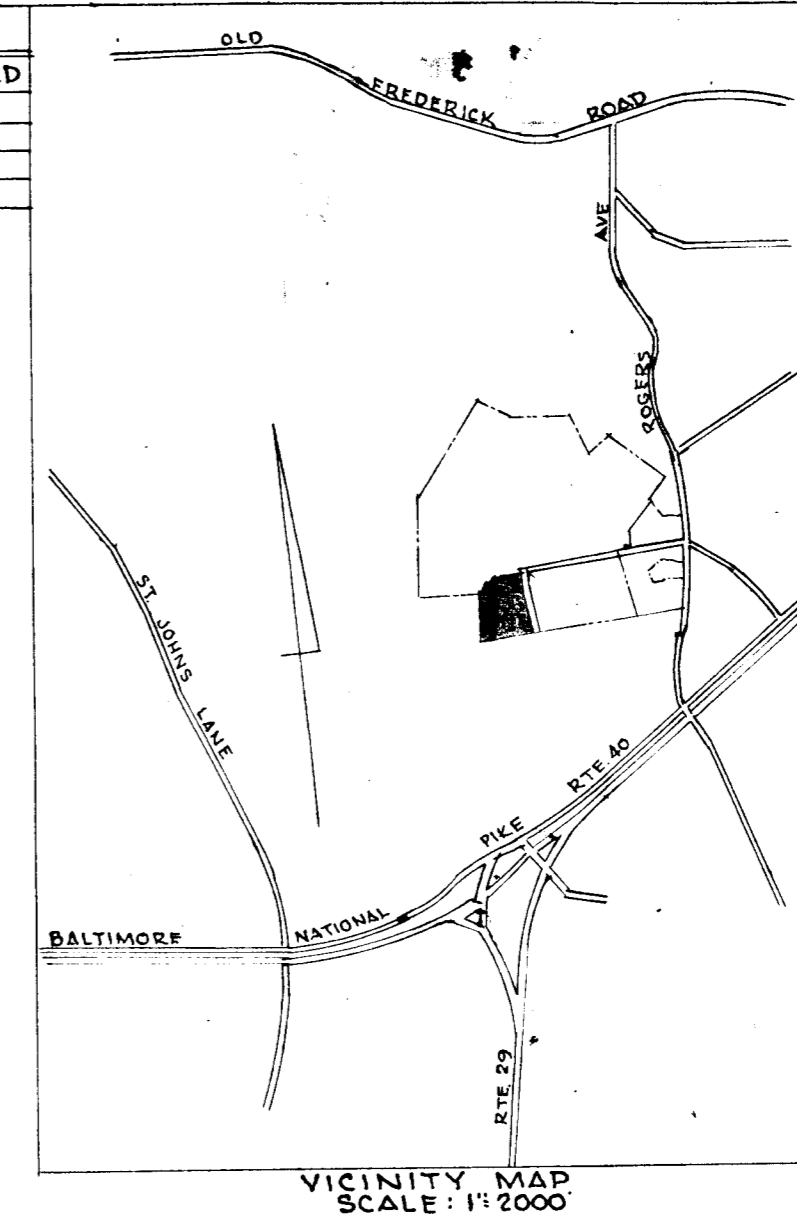


NOTE: Meridian and coordinates based on Maryland State coordinate system.

DENSITY TABULATIONS			
SECTION	AC (NET)	UNITS ALLOWED	UNITS PROVIDED
I	11.59	171	127
II	14.36	223	215
III	8.54	130	132
TOTAL	34.09	530	474



**SITE PLAN**  
Approved on 1968  
By action of the Howard County Planning Commission. This on file in the office of the Planning Commission.

The final plat of Town & Country West, Section Three is in accordance with the preliminary plan of Town & Country West tentatively approved by the Howard County Planning Commission on December 23, 1965 for 1338 apartment units on 179.0 acres of land. As the final plat for each successive section is approved and recorded, the proposed section shall be computed so that the number of apartment units within the area covered by the final plats shall never at any time, exceed the permitted number of apartment units within the entire total area of the tentatively approved preliminary plan.

I/we the undersigned owner(s) of the property shown and described hereon, my/our heirs or assigns do hereby adopt this plan of subdivision.

FOR TOWN & COUNTRY WEST, INC.  
SUN LIFE BLDG.  
CHARLES CENTER  
BALTIMORE, MARYLAND

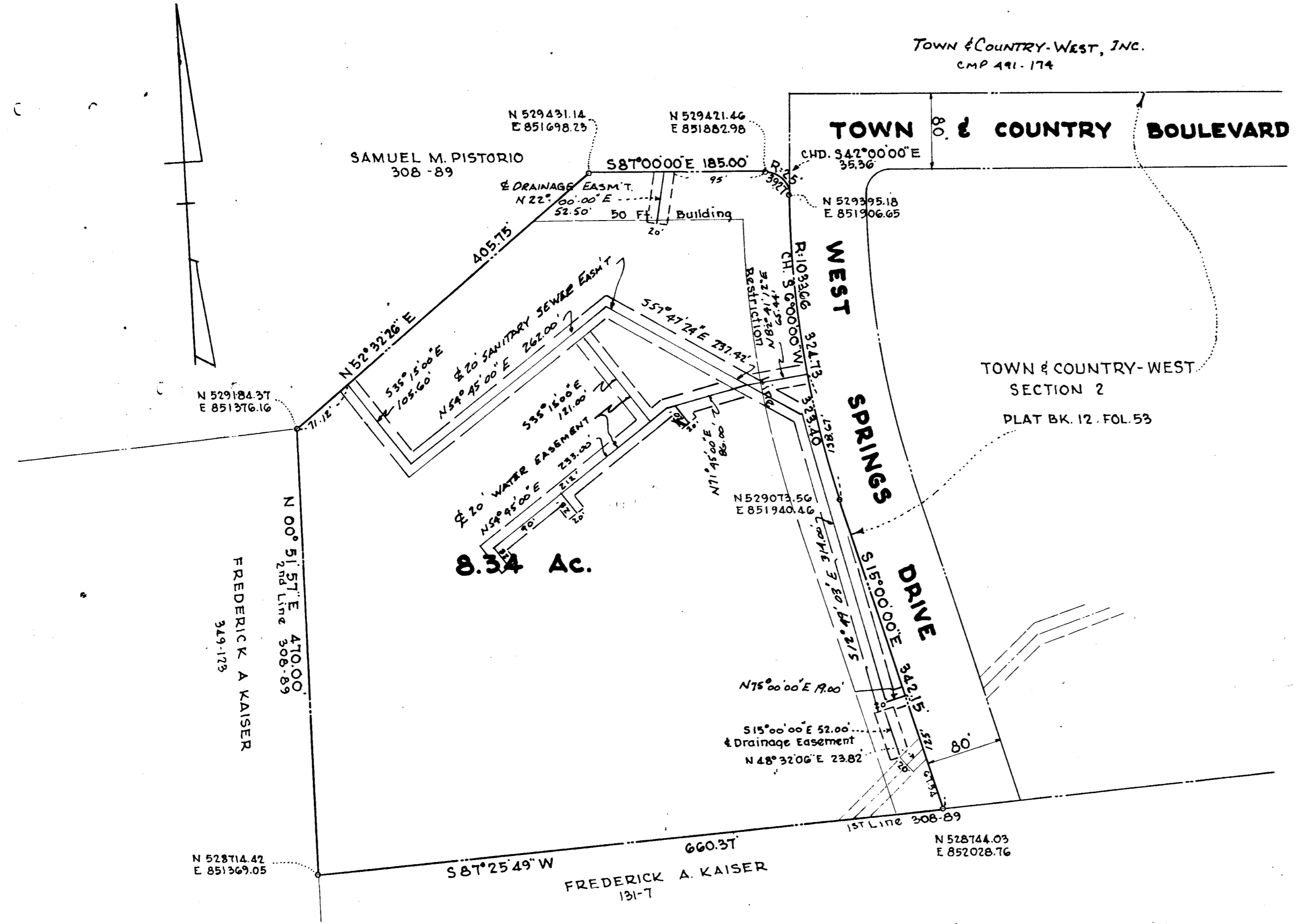
BY: Henry Whitehead 8/1/68  
VICE PRESIDENT DATE

RECEIVED

SEP 10 1968

HOWARD COUNTY PLANNING COMMISSION

RECORDED PLAT BOOK 16 FOLIO 36  
ON 9-6 1968 AMONG THE LAND RECORDS OF  
HOWARD COUNTY, MD.



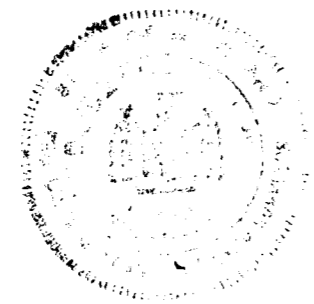
**SECTION THREE  
TOWN AND COUNTRY WEST**

2ND ELECTION DISTRICT  
HOWARD COUNTY, MARYLAND

JULY 2, 1968  
SCALE: 1"=100'

I, William O. Luethe Jr., hereby certify that the plat shown hereon is correct, that is part of that tract of land which by deed dated December 31, 1957 and recorded among the Land Records of Howard Co., Md. in Liber R.H.M. 308 & 610 89 was granted and conveyed by Dominic J. Pistorio, Inc. to Samuel M. Pistorio & wife, and that stones and monuments are in place as shown. I further certify that the requirements of Section 80 Article 17 of the Annotated Code of Maryland (as amended) as far as they relate to the making of this plat have been complied with.

William O. Luethe Jr.  
William O. Luethe Jr. Lic. No. 2005 Title Date



JAMES S. SPAMER & ASSOCIATES ENGINEERS & SURVEYORS 8017 YORK ROAD TOWSON, MD. 21204	APPROVED: HOWARD COUNTY METROPOLITAN COMMISSION	APPROVED: HOWARD COUNTY PLANNING COMMISSION	APPROVED: HOWARD COUNTY HEALTH DEPARTMENT FOR PUBLIC WATER & PUBLIC SEWER	APPROVED: HOWARD COUNTY ROADS DEPARTMENT
	<u>W. O. Luethe Jr.</u> CHIEF ENGINEER	<u>Hugh Nichols</u> CHAIRMAN <u>Thomas A. Harris</u> DIRECTOR	Aug 21, 1968 DATE 8-30-68 DATE	<u>Herbert Prox</u> COUNTY HEALTH OFFICER DATE Sept 6, 1968 DATE

F-68-40