

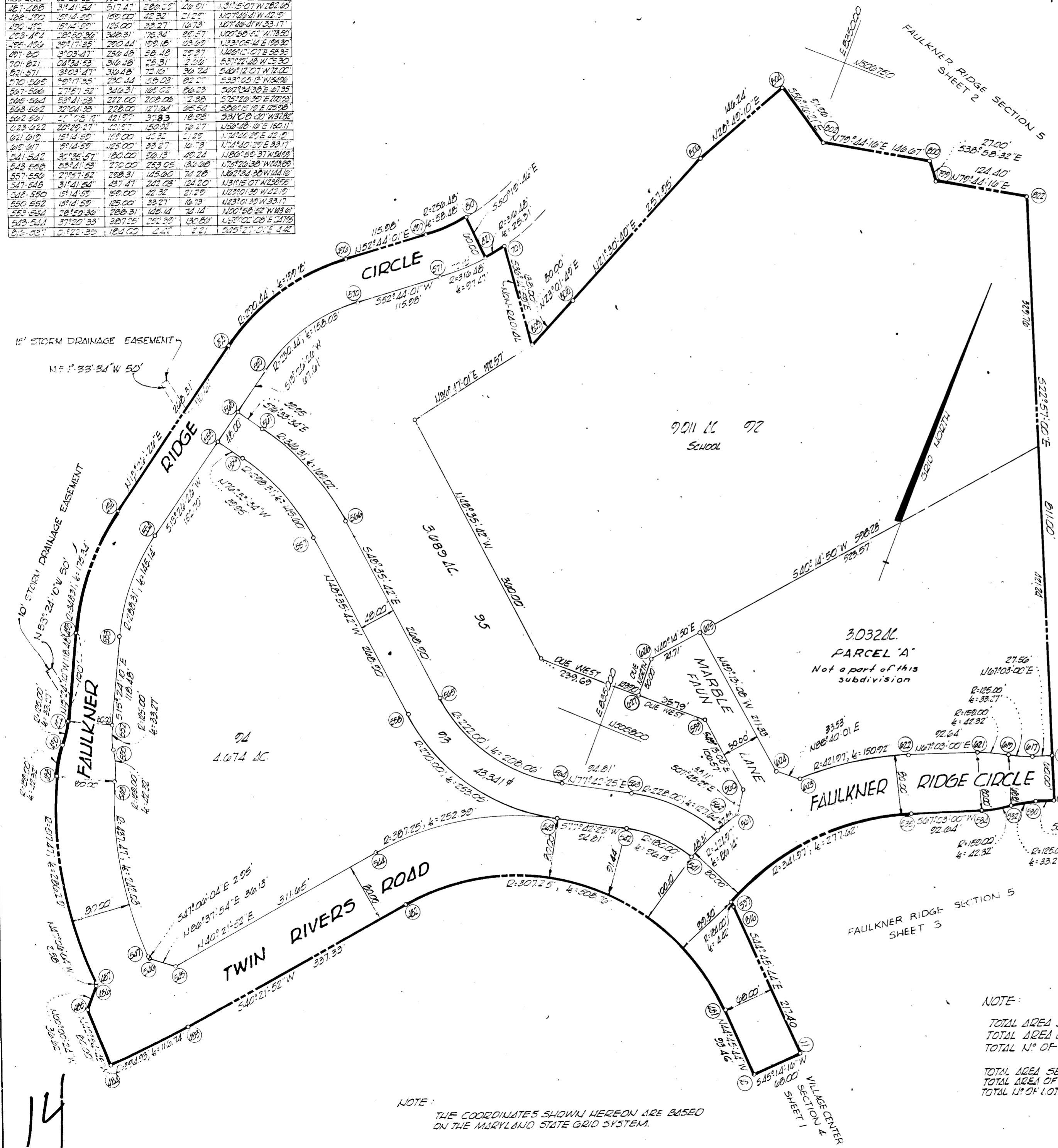
NO	CHORD	DATA	CHORD
530.532	151.14.53	125.00	33.21
531.534	57.14.53	159.00	42.92
532.536	26.30.52	34.97	77.62
533.538	21.22.54	30.75	82.70
534.540	08.12.53	110.72	53.11
535.542	31.21.54	517.47	288.25
536.544	127.12.55	159.00	42.92
537.546	157.12.55	135.00	39.77
538.548	208.10.30	340.91	175.24
539.550	309.17.35	720.44	192.15
540.552	410.13.47	286.45	58.48
541.554	01.13.48	346.46	75.31
542.556	31.03.47	346.46	75.31
543.558	209.17.35	720.44	192.15
544.560	117.12.55	159.00	42.92
545.562	77.12.55	135.00	39.77
546.564	53.21.55	272.00	85.84
547.566	37.02.56	272.00	85.84
548.568	27.12.57	421.99	178.93
549.570	20.22.57	421.99	178.93
550.572	15.14.59	157.00	41.35
551.574	57.14.59	125.00	33.21
552.576	37.35.57	180.00	50.13
553.578	53.21.55	272.00	85.84
554.580	53.21.55	272.00	85.84
555.582	27.12.57	421.99	178.93
556.584	31.21.54	487.47	242.05
557.586	15.14.59	157.00	41.35
558.588	15.14.59	157.00	41.35
559.590	15.14.59	157.00	41.35
560.592	15.14.59	157.00	41.35
561.594	15.14.59	157.00	41.35
562.596	15.14.59	157.00	41.35
563.598	15.14.59	157.00	41.35
564.600	15.14.59	157.00	41.35
565.602	15.14.59	157.00	41.35
566.604	15.14.59	157.00	41.35
567.606	15.14.59	157.00	41.35
568.608	15.14.59	157.00	41.35
569.610	15.14.59	157.00	41.35
570.612	15.14.59	157.00	41.35
571.614	15.14.59	157.00	41.35
572.616	15.14.59	157.00	41.35
573.618	15.14.59	157.00	41.35
574.620	15.14.59	157.00	41.35
575.622	15.14.59	157.00	41.35
576.624	15.14.59	157.00	41.35
577.626	15.14.59	157.00	41.35
578.628	15.14.59	157.00	41.35
579.630	15.14.59	157.00	41.35
580.632	15.14.59	157.00	41.35
581.634	15.14.59	157.00	41.35
582.636	15.14.59	157.00	41.35
583.638	15.14.59	157.00	41.35
584.640	15.14.59	157.00	41.35
585.642	15.14.59	157.00	41.35
586.644	15.14.59	157.00	41.35
587.646	15.14.59	157.00	41.35
588.648	15.14.59	157.00	41.35
589.650	15.14.59	157.00	41.35
590.652	15.14.59	157.00	41.35
591.654	15.14.59	157.00	41.35
592.656	15.14.59	157.00	41.35
593.658	15.14.59	157.00	41.35
594.660	15.14.59	157.00	41.35
595.662	15.14.59	157.00	41.35
596.664	15.14.59	157.00	41.35
597.666	15.14.59	157.00	41.35
598.668	15.14.59	157.00	41.35
599.670	15.14.59	157.00	41.35
600.672	15.14.59	157.00	41.35

All utility and drainage easements shown hereon may be used for the installation and maintenance of sewer, drainage and other underground utility services as required by authorized agencies of Howard County

Open space is available for use of drainage easements in accordance with the approved final development criteria for Phase II, Village of Wilde Lake, as recorded in the Plat Book II, Folio to

All requirements to be in accordance with the approved final development criteria for Phase II, Village of Wilde Lake, as recorded in the land records of Howard County in Plat Book Folio to

COORDINATES			
NO	EAST	WEST	EAST
530	234351.02	234351.02	234351.02
531	234352.02	234352.02	234352.02
532	234353.02	234353.02	234353.02
533	234354.02	234354.02	234354.02
534	234355.02	234355.02	234355.02
535	234356.02	234356.02	234356.02
536	234357.02	234357.02	234357.02
537	234358.02	234358.02	234358.02
538	234359.02	234359.02	234359.02
539	234360.02	234360.02	234360.02
540	234361.02	234361.02	234361.02
541	234362.02	234362.02	234362.02
542	234363.02	234363.02	234363.02
543	234364.02	234364.02	234364.02
544	234365.02	234365.02	234365.02
545	234366.02	234366.02	234366.02
546	234367.02	234367.02	234367.02
547	234368.02	234368.02	234368.02
548	234369.02	234369.02	234369.02
549	234370.02	234370.02	234370.02
550	234371.02	234371.02	234371.02
551	234372.02	234372.02	234372.02
552	234373.02	234373.02	234373.02
553	234374.02	234374.02	234374.02
554	234375.02	234375.02	234375.02
555	234376.02	234376.02	234376.02
556	234377.02	234377.02	234377.02
557	234378.02	234378.02	234378.02
558	234379.02	234379.02	234379.02
559	234380.02	234380.02	234380.02
560	234381.02	234381.02	234381.02
561	234382.02	234382.02	234382.02
562	234383.02	234383.02	234383.02
563	234384.02	234384.02	234384.02
564	234385.02	234385.02	234385.02
565	234386.02	234386.02	234386.02
566	234387.02	234387.02	234387.02
567	234388.02	234388.02	234388.02
568	234389.02	234389.02	234389.02
569	234390.02	234390.02	234390.02
570	234391.02	234391.02	234391.02
571	234392.02	234392.02	234392.02
572	234393.02	234393.02	234393.02
573	234394.02	234394.02	234394.02
574	234395.02	234395.02	234395.02
575	234396.02	234396.02	234396.02
576	234397.02	234397.02	234397.02
577	234398.02	234398.02	234398.02
578	234399.02	234399.02	234399.02
579	234400.02	234400.02	234400.02
580	234401.02	234401.02	234401.02
581	234402.02	234402.02	234402.02
582	234403.02	234403.02	234403.02
583	234404.02	234404.02	234404.02
584	234405.02	234405.02	234405.02
585	234406.02	234406.02	234406.02
586	234407.02	234407.02	234407.02
587	234408.02	234408.02	234408.02
588	234409.02	234409.02	234409.02
589	234410.02	234410.02	234410.02
590	234411.02	234411.02	234411.02
591	234412.02	234412.02	234412.02
592	234413.02	234413.02	234413.02
593	234414.02	234414.02	234414.02
594	234415.02	234415.02	234415.02
595	234416.02	234416.02	234416.02
596	234417.02	234417.02	234417.02
597	234418.02	234418.02	234418.02
598	234419.02	234419.02	234419.02
599	234420.02	234420.02	234420.02
600	234421.02	234421.02	234421.02



**OWNERS CERTIFICATE**  
 We the Howard Research and Development Corp owners of the property shown and described hereon adopt this plan of subdivision and reserved the fee simple title to the beds of the streets and/or roads shown hereon and in consideration of the approval of this plan by the Planning Commission of Howard County, Maryland, we for ourselves our heirs or assigns, do hereby give and grant unto the Board of County Commissioners the right and option to acquire for the consideration of one dollar, the fee simple title to the beds of the streets and/or roads shown hereon within the period of five years from the recording of this plan among the land records of Howard County, MD.  
 Witness our hands and seals this 13 day of Apr. 1967

By: *Paul W. Smith* Authorized Agent

ATTEST: *Charles E. Smith*  
**SURVEYORS CERTIFICATE:**  
 I Russell E. Lowman hereby certify that the plan shown hereon is correct, and is a subdivision of part of the land which by deed dated June 7, 1965 and recorded among the land records of Howard County, Maryland in Liber W.H.H. 401, folio 250 was granted and conveyed by Town and Ranch Homes, Inc. to the Howard Research and Development Corp, and that stands and/or monuments marked thus  $\odot$  are in place as shown. I further certify that the requirements of section 40, article 17, of the annotated code of Maryland (as amended) as far as they relate to the making of this plat, has been complied with.

*Russell E. Lowman* Reg. L.S. No. 3047 data  
 Approved: Howard County Health Dept. for public Sewers and Public Water Systems,  
*Robert E. Wine* 5-18-67 data  
 County Health Officer  
 Approved: Howard County Planning Commission  
*Kenneth B. Crane* 5-18-67 data  
 Chairman  
*Thomas A. Harriagh* 5-24-67 data  
 Director  
 Approved: Howard County Roads Department  
*Robert E. Smith* 5-15-67 data  
 Roads SUPERINTENDENT  
 Approved: Howard County Metropolitan Commission  
*W. O. Albert* 5-17-67 data  
 Chief Engineer

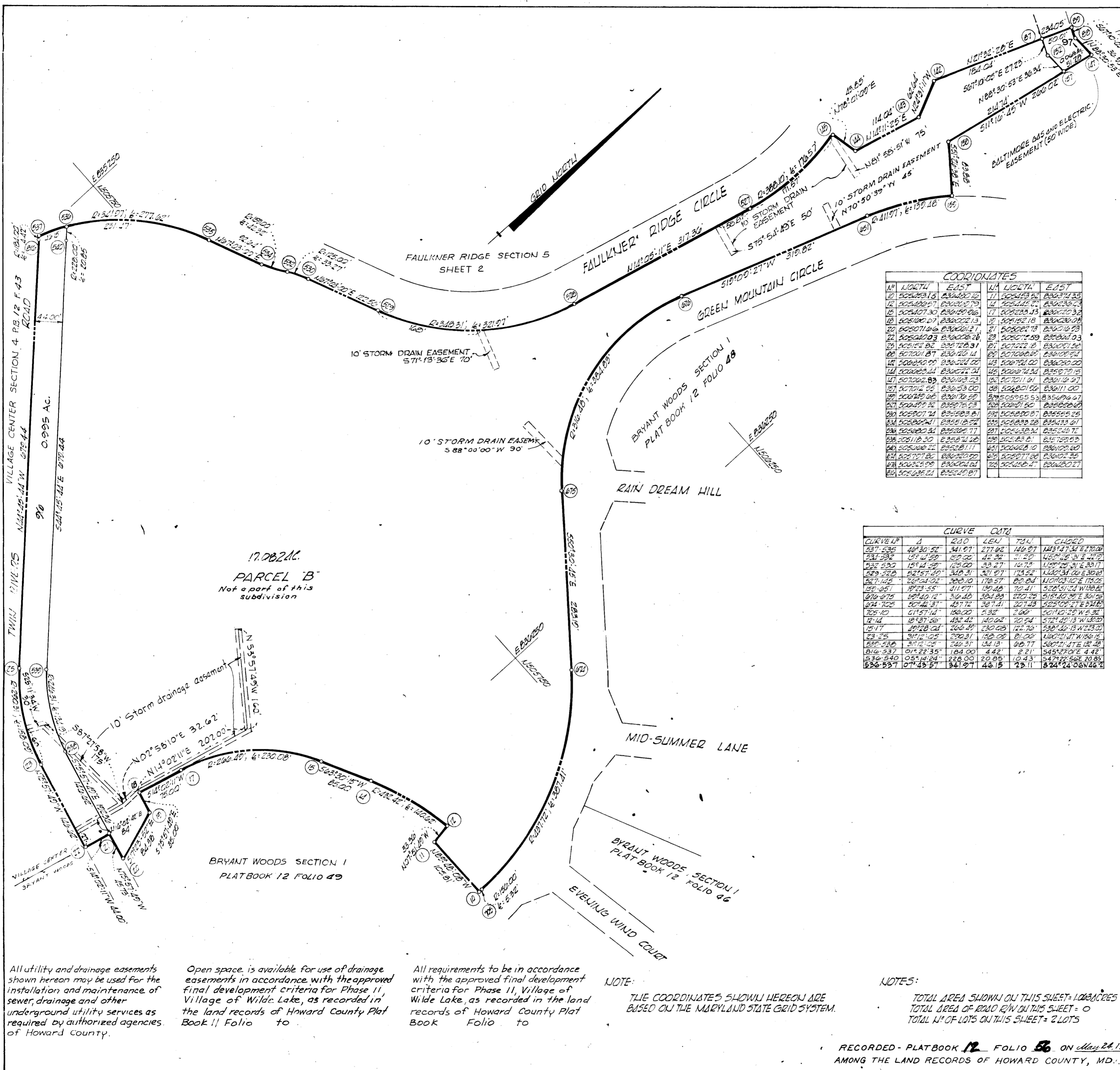
**GRANT OF EASEMENT FOR WATER AND SEWER**  
 We, the Howard Research and Development Corporation, owner of the property shown and described hereon do hereby grant unto the Howard County Metropolitan Commission, its successors and assigns, the right to lay construct and maintain water and sewer mains and services pipes, in connection therewith, in and under the right-of-way of the roads and streets as shown hereon.  
 THE HOWARD RESEARCH AND DEVELOPMENT CORPORATION  
 Attest: *Charles E. Smith* By *Paul W. Smith*  
 Authorized Agent

RECORDED - PLATBOOK 12 FOLIO 54 ON MAY 24, 1967  
 AMONG THE LAND RECORDS OF HOWARD COUNTY, MD.  
**COLUMBIA**  
 VILLAGE OF WILDE LAKE SUBDIVISION  
 SECTION 5  
 FAULKNER RIDGE  
 FIFTH ELECTION DIST. HOWARD CO., MD.  
 SCALE: 1"=100' APRIL 7, 1967  
 THE HOWARD RESEARCH AND DEVELOPMENT CORPORATION  
 THE VILLAGE OF CROSS KEYS BALTIMORE, MD 21210  
 C.D. ME-SICK JR. AND ASSOCIATES, INC.  
 CONSULTING ENGINEERS & LAND SURVEYORS  
 21 WEST STREET ANNAPOLIS, MD.  
 SHEET 1 OF 3









**OWNERS CERTIFICATE:**

WE, THE HOWARD RESEARCH AND DEVELOPMENT CORP., OWNERS OF THE PROPERTY SHOWN AND DESCRIBED HEREON, ADOPT THIS PLAN OF SUBDIVISION AND RESERVE THE FEE SIMPLE TITLE TO THE BEDS OF THE STREETS AND/OR ROADS SHOWN HEREON, AND IN CONSIDERATION OF THE APPROVAL OF THIS PLAN BY THE PLANNING COMMISSION OF HOWARD COUNTY, MARYLAND, WE FOR OURSELVES, OUR HEIRS OR ASSIGNS, DO HEREBY GIVE AND GRANT UNTO THE BOARD OF COUNTY COMMISSIONERS, THE RIGHT AND OPTION TO ACQUIRE FOR THE CONSIDERATION OF ONE DOLLAR, THE FEE SIMPLE TITLE TO THE BEDS OF THE STREETS AND/OR ROADS SHOWN HEREON WITHIN THE PERIOD OF FIVE YEARS FROM THE RECORDING OF THIS PLAN UNLESS THE LAID RECORDS OF HOWARD COUNTY, MARYLAND, WITNESS OUR HANDS AND SEALS THIS 13 DAY OF APR. 1967

By: Paul W. Warner Architect Agent

ATTEST: Charles E. Smith SURVEYORS CERTIFICATE:

I, RUSSELL E. LOWMAN, HEREBY CERTIFY THAT THE PLAN SHOWN HEREON IS CORRECT, AND IS A SUBDIVISION OF PART OF THE LAND WHICH BY DEED DATED JUNE 7, 1963 AND RECORDED AMONG THE LAID RECORDS OF HOWARD COUNTY, MARYLAND, IN LIBER WITH 401 FOLIO 250 WAS GRANTED AND CONVEYED BY TOWN AND RANCH HOMES, INC. TO THE HOWARD RESEARCH AND DEVELOPMENT, CORP. AND PART OF THE LAND WHICH BY DEED DATED OCT. 14, 1963 AND RECORDED AMONG THE LAID RECORDS OF HOWARD COUNTY, MARYLAND, IN LIBER WITH 409 FOLIO D WAS GRANTED AND CONVEYED BY G.B.S. ENTERPRISES TO THE HOWARD RESEARCH AND DEVELOPMENT, CORP. AND THAT STONES AND/OR MONUMENTS MARKED THEREON ARE IN PLACE AS SHOWN.

I FURTHER CERTIFY THAT THE REQUIREMENTS OF SECTION 60, ARTICLE 17, OF THE ANNOTATED CODE OF MARYLAND (AS AMENDED) AS FAR AS THEY RELATE TO THE MAKING OF THIS PLAN, HAVE BEEN COMPLIED WITH.

Russell E. Lowman 4-7-67 DATE  
RUSSELL E. LOWMAN REG. L.S. NO. 1087

APPROVED: HOWARD COUNTY HEALTH DEPT. FOR PUBLIC BOWERS AND PUBLIC WATER SYSTEMS  
Dr. Theo. R. Shoop & Palmer F. Wine 5-18-67 DATE  
COUNTY HEALTH OFFICERS

APPROVED: HOWARD COUNTY PLANNING COMMISSION  
Carl E. Greiner 5-18-67 DATE  
CHAIRMAN

APPROVED: HOWARD COUNTY ROADS DEPARTMENT  
Thomas J. Harris, Jr. 5-24-67 DATE  
DIRECTOR

APPROVED: HOWARD COUNTY METROPOLITAN COMMISSION  
Hermon S. Meill 5-15-67 DATE  
ROADS SUPERINTENDENT

APPROVED: HOWARD COUNTY METROPOLITAN COMMISSION  
W. O. Roberts 5-17-67 DATE  
CHIEF ENGINEER

GRANT OF EASEMENT FOR WATER AND SEWER  
We, the Howard Research and Development Corporation, owner of the property shown and described hereon do hereby grant unto the Howard County Metropolitan Commission, its successors and assigns, the right to lay, construct and maintain water and sewer mains and services pipes in connection therewith, in and under the right-of-way of the roads and streets as shown hereon

ATTEST: Charles E. Smith by Paul W. Warner Architect Agent  
THE HOWARD RESEARCH AND DEVELOPMENT CORPORATION:

**COLUMBIA**  
VILLAGE OF WILDE LAKE SUBDIVISION  
SECTION 5  
FAULKNER RIDGE

FIFTH ELECTION DIST. HOWARD CO., MD.  
SCALE: 1"=100' APRIL 7, 1967

THE HOWARD RESEARCH AND DEVELOPMENT CORP.  
THE VILLAGE OF CROSS KEYS BALTIMORE, MD. 21210  
C.D. MESSICK JR. AND ASSOCIATES INC.

CONSULTING ENGINEERS & LAND SURVEYORS  
21 WEST STREET ANNAPOLIS, MD.

**COORDINATES**

NO.	NORTH	EAST	NO.	NORTH	EAST
10	805443.15	833714.35	11	805443.52	833714.35
12	805440.57	833714.35	14	805441.01	833714.35
16	805407.30	833714.35	17	805433.43	833714.35
18	805100.67	833714.35	19	805162.18	833714.35
20	805071.06	833714.35	21	805062.78	833714.35
22	805040.03	833714.35	23	805071.59	833714.35
24	805014.82	833714.35	25	805072.18	833714.35
26	805001.87	833714.35	27	805072.82	833714.35
28	805000.05	833714.35	29	805072.00	833714.35
30	805000.00	833714.35	31	805072.00	833714.35
32	805000.00	833714.35	33	805072.00	833714.35
34	805000.00	833714.35	35	805072.00	833714.35
36	805000.00	833714.35	37	805072.00	833714.35
38	805000.00	833714.35	39	805072.00	833714.35
40	805000.00	833714.35	41	805072.00	833714.35
42	805000.00	833714.35	43	805072.00	833714.35
44	805000.00	833714.35	45	805072.00	833714.35
46	805000.00	833714.35	47	805072.00	833714.35
48	805000.00	833714.35	49	805072.00	833714.35
50	805000.00	833714.35	51	805072.00	833714.35
52	805000.00	833714.35	53	805072.00	833714.35
54	805000.00	833714.35	55	805072.00	833714.35
56	805000.00	833714.35	57	805072.00	833714.35
58	805000.00	833714.35	59	805072.00	833714.35
60	805000.00	833714.35	61	805072.00	833714.35
62	805000.00	833714.35	63	805072.00	833714.35
64	805000.00	833714.35	65	805072.00	833714.35
66	805000.00	833714.35	67	805072.00	833714.35
68	805000.00	833714.35	69	805072.00	833714.35
70	805000.00	833714.35	71	805072.00	833714.35

**CURVE DATA**

CURVE NO.	Δ	PC	PT	PI	CHORD
537-538	40°30'52"	341.97	277.02	140.97	140.97
538-539	15°14'59"	129.02	42.32	31.29	45.52
539-540	18°14'59"	129.02	53.27	14.75	105.25
540-541	52°57'40"	342.31	321.07	174.52	142.31
541-542	56°54'02"	342.10	178.57	80.84	110.31
542-543	18°23'55"	411.97	190.45	70.41	528.51
543-544	19°40'12"	342.40	304.83	220.25	515.40
544-545	50°42'31"	437.72	327.41	201.43	525.02
545-546	01°57'14"	150.00	532	2.00	501.00
546-547	18°37'58"	432.42	140.82	70.54	572.40
547-548	19°28'04"	266.29	230.25	122.70	530.43
548-549	31°12'05"	392.31	192.09	81.00	400.21
549-550	31°12'05"	392.31	192.09	81.00	400.21
550-551	01°22'35"	184.00	4.42	2.21	545.20
551-552	05°14'24"	228.00	20.05	10.43	547.22
552-553	07°43'57"	341.97	146.15	23.11	624.24

NOTE: THE COORDINATES SHOWN HEREON ARE BASED ON THE MARYLAND STATE GRID SYSTEM.

NOTES: TOTAL AREA SHOWN ON THIS SHEET = 1.00 ACRES  
TOTAL AREA OF ROAD R/W ON THIS SHEET = 0  
TOTAL NO. OF LOTS ON THIS SHEET = 2 LOTS

RECORDED - PLATBOOK 12 FOLIO 56 ON May 24, 1967  
AMONG THE LAND RECORDS OF HOWARD COUNTY, MD.

All utility and drainage easements shown hereon may be used for the installation and maintenance of sewer, drainage and other underground utility services as required by authorized agencies of Howard County.

Open space is available for use of drainage easements in accordance with the approved final development criteria for Phase II, Village of Wilde Lake, as recorded in the land records of Howard County Plat Book 11 Folio to

All requirements to be in accordance with the approved final development criteria for Phase II, Village of Wilde Lake, as recorded in the land records of Howard County Plat Book Folio to