

— SURVEYOR'S CERTIFICATE —

I hereby certify that the plan shown hereon is correct;

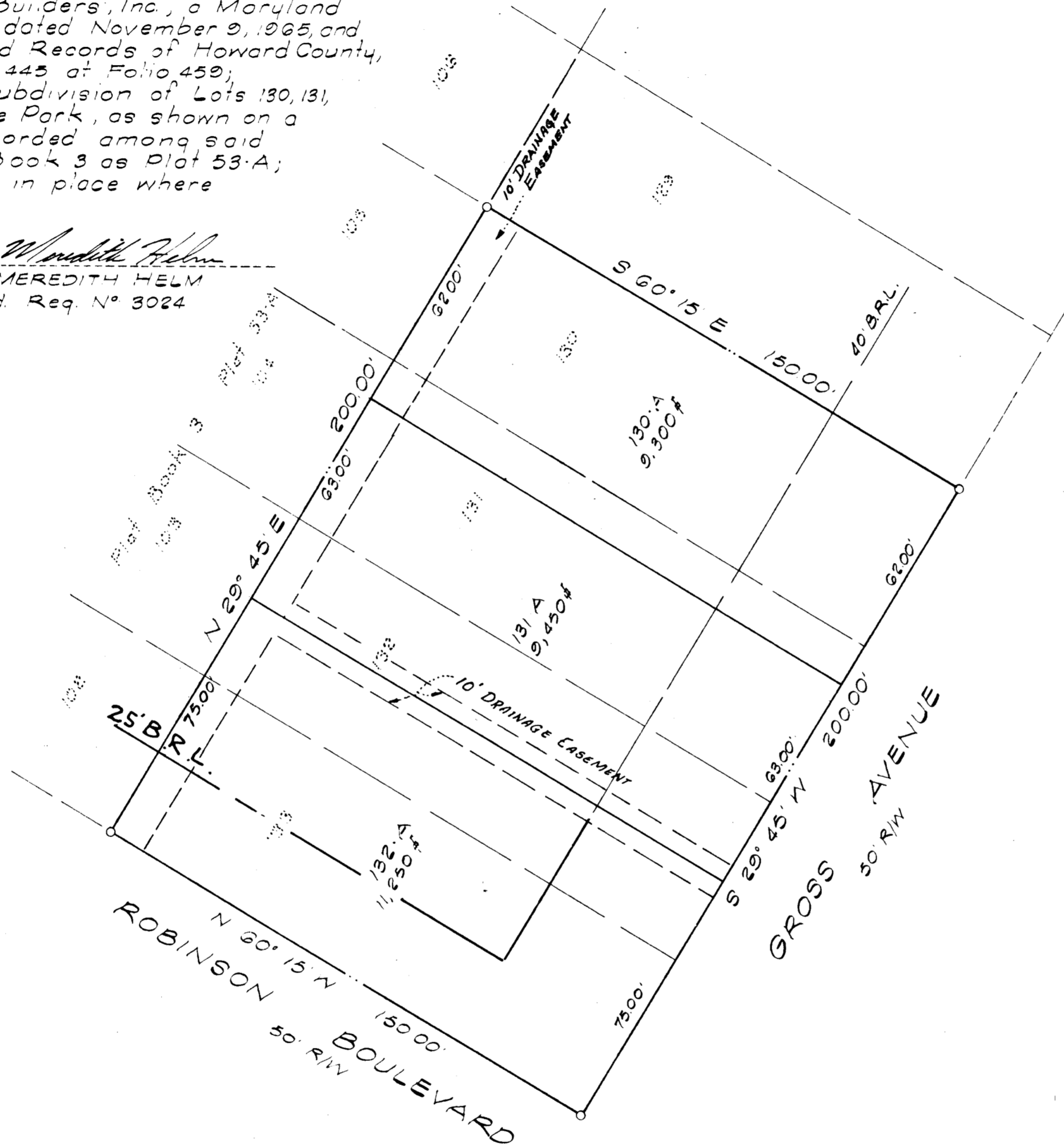
That it is a subdivision of all of that land conveyed by Frank Tuozzo, Sr and Louise Tuozzo, his wife, to Supreme Builders, Inc., a Maryland Corporation, by a deed dated November 9, 1965, and recorded among the Land Records of Howard County, Maryland, in Liber WHH 445 at Folio 450;

That it is also a resubdivision of Lots 130, 131, 132 and 133 of High Ridge Park, as shown on a plat of subdivision recorded among said Land Records in Plat Book 3 as Plat 53-A;

That iron pipes are in place where indicated thus: o

November 23, 1965

Meredith Helm
 MEREDITH HELM
 Md. Reg. No 3024



OWNER'S DEDICATION
 We, Supreme Builders, Inc., a Maryland Corporation by Robert Charles Word, President, and Henry Albright, Jr, Vice President and Treasurer, hereby adopt this plan of subdivision and establish the minimum building restriction lines.

There are no suits of action, leases, liens, or trusts on any of the property included in this plan of subdivision.

November 27, 1965

Henry Albright Jr
 Attest

Henry Albright Jr
 Attest

Supreme Builders Inc.
 By:

Robert C. Word
 Robert Charles Word
 President

Henry Albright Jr
 Henry Albright Jr
 Vice President

LOTS 130A, 131A and 132A
HIGH RIDGE PARK
 SIXTH ELECTION DISTRICT
 HOWARD COUNTY
 MARYLAND

SCALE: 1" = 30'

NOVEMBER, 1965

TOTAL AREA 30,000±

RECORDED PLAT BOOK 10 FOLIO 64
 ON 12/6 1965 AMONG THE LAND RECORDS OF
 HOWARD COUNTY, MD.

PLAT APPROVED
 BY

12-1-65
 Date

Wilma K. Danner
 Chairman, Planning Commission

12-2-65
 Date

Thomas G. Harris
 Planning Director

12-2-65
 Date

Thomas S. Neill
 County Roads Supervisor

APPROVED HOWARD COUNTY HEALTH DEPT.

Theodore Shapiro Dec 2 1965
 County Health Officer

APPROVED HOWARD COUNTY METROPOLITAN COMM.

W. O. Lubert Dec 2 1965
 CHIEF ENGINEER

MEREDITH HELM
 Registered Land Surveyor
 3601 Hamilton Street
 W Hyattsville
 Maryland