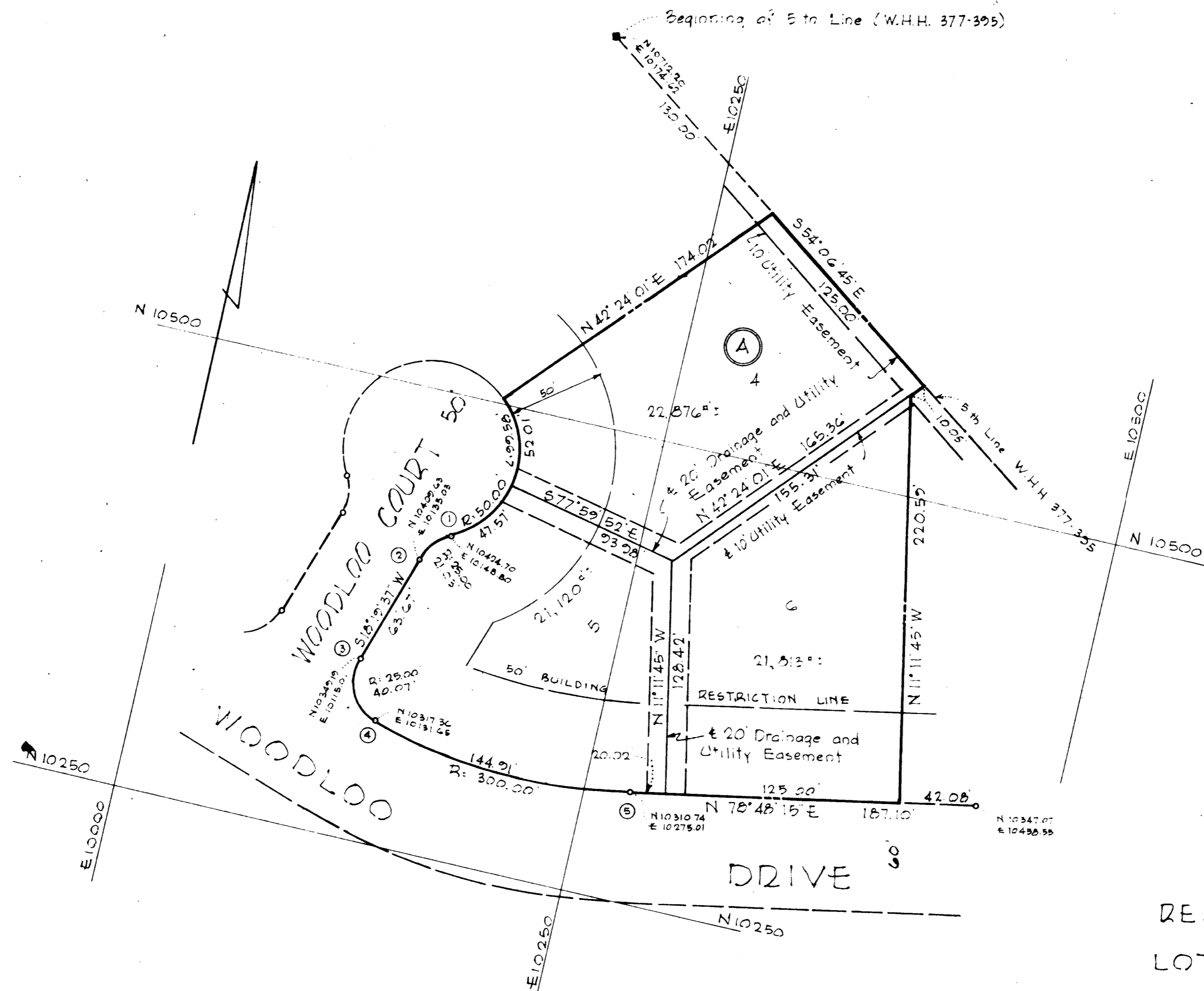


CURVE DATA						
No.	Radius	Length	Tangent	Δ	Chord bearing	Chd. Dist.
1-2	25.00	21.03	11.18	48° 11' 23"	S42° 25' 10" W	20.41
3-4	25.00	40.07	25.82	91° 50' 43"	S27° 35' 45" E	35.72
4-5	300.00	144.91	73.70	27° 40' 39"	S87° 21' 26" E	143.52



RECORDED PLAT BOOK 10 FOLIO 48  
ON 8-20 1965 AMONG THE LAND RECORDS OF  
HOWARD COUNTY, MD.

**APPROVED**  
PLANNING COMMISSION  
OF HOWARD COUNTY  
5/19/65

RESUBDIVISION PLAT OF  
LOTS 4, 5, & 6, BLOCK A  
**"LOCUST MANOR"**  
1ST ELECTION DIST., HOWARD COUNTY, MARYLAND

MAY 17, 1965 SCALE: 1" = 50'

OWNER AND DEVELOPER  
DONLEIGH DEVELOPMENT CORP.

NOTE:  
The coordinates shown hereon are  
from an assumed origin.

AREA SHOWN THIS PLAT - 1.51 ACRES

APPROVED: HOWARD COUNTY HEALTH DEPARTMENT	
<i>W. J. ...</i> County Health Officer	6-8-65
APPROVED: HOWARD COUNTY PLANNING COMMISSION	
<i>Wilmon D. ...</i> Commissioner	6-2-65
<i>Thomas L. ...</i> Director	8-19-65
APPROVED: HOWARD COUNTY HIGHWAYS DEPARTMENT	
<i>Thomas S. ...</i> Road Engineer	6-2-65
APPROVED: HOWARD COUNTY METROPOLITAN COMMISSION	
<i>W. O. ...</i> Chief Engineer	6-2-65

**OWNER'S CERTIFICATE:**  
We, Donleigh Development Corp., owners of the property shown and described hereon, adopt this plan of subdivision and reserve the fee simple title to the beds of the streets and/or roads shown hereon, and in consideration of the approval of this plat by the Planning Commission of Howard County, we, for ourselves, our heirs, or assigns do hereby give and grant unto the Board of County Commissioners of Howard County the right and option to acquire for the consideration of One Dollar, the fee simple title to the beds of the streets and/or roads shown hereon, within the period of five years from the date of the recording of this plat among the Land Records of Howard County.

Witness our hand and seal this day of May, 1965  
Donald A. ... President  
Donleigh Development Corp.

**ENGINEER'S CERTIFICATE:**  
I, Curt A.H. Jeschke, hereby certify that the plan shown hereon is correct, that it is a subdivision of a part of the land which by deed dated December 1, 1961 and recorded among the Land Records of Howard, Maryland in Liber W.H.H. 377 at Page 395 was granted and conveyed by Virgil L. Lough and Idaline L. Lough, his wife, to Donleigh Development Corp. and that Concrete Monuments marked thus are in place as shown.

I further certify that the requirements of Section 72-B, Article 17 of the Annotated Code of Maryland (as amended) as far as they relate to the making of this plat have been complied with.

May 17, 1965  
Curt A.H. Jeschke  
Curt A.H. Jeschke Reg. No. 2351

**PURDUM  
&  
JESCHKE  
ENGINEERS**  
24 Park Avenue  
Ellicott City, Maryland



47