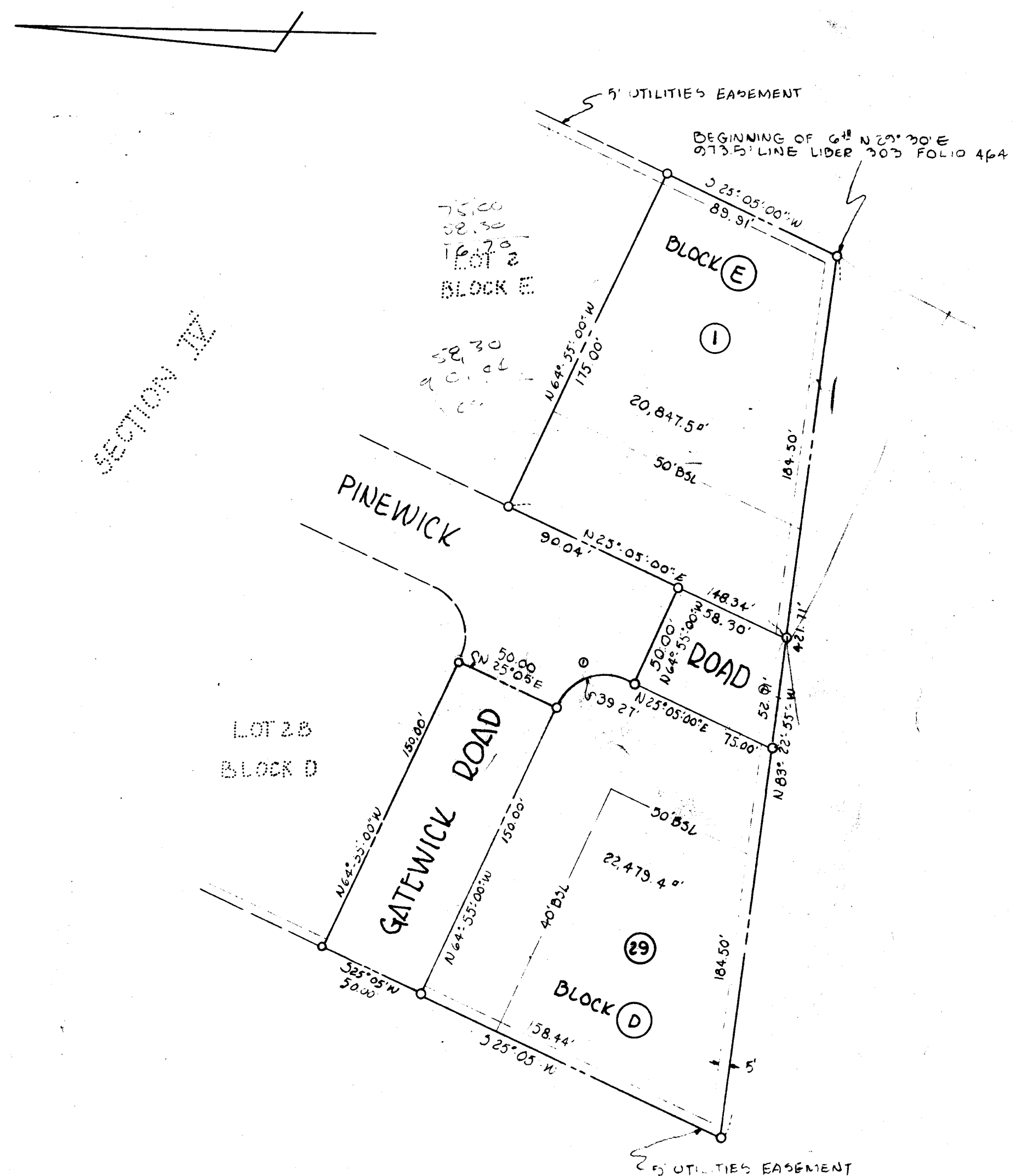


CURVE DATA						
NO.	RADIUS	Δ	ARC	TAN	CHORD	L.C.B.
1	25.00	90°00'00"	79.27	25.00	35.96	510°55'00"E



WE THE THORNBROOK BUILDING CORPORATION, OWNERS OF THE PROPERTY SHOWN AND DESCRIBED HEREON, ADOPT THIS PLAN OF SUBDIVISION AND RESERVE THE FEE SIMPLE TO THE BEDS OF THE STREETS AND/OR ROADS SHOWN HEREON, AND IN CONSIDERATION OF THE APPROVAL OF THIS PLAN BY THE PLANNING COMMISSION OF HOWARD COUNTY, WE AND/OR OUR ASSIGNS DO HEREBY GIVE AND GRANT UNTO THE BOARDS OF COUNTY COMMISSIONERS FOR THE CONSIDERATION OF ONE DOLLAR THE FEE SIMPLE TITLE TO THE BEDS OF THE STREETS AND/OR ROADS SHOWN HEREON, WITHIN THE PERIOD OF FIVE YEARS FROM THE DATE OF THE RECORDING OF THIS PLAN AMONG THE LAND RECORDS OF HOWARD COUNTY

WITNESS OUR HAND AND SEAL OF DATE INDICATED

THE THORNBROOK BUILDING CORPORATION -

*H. J. Baker*  
 H. J. BAKER, SECRETARY & TREASURER  
 410 MT. LEBRON DRIVE  
 ELLICOTT CITY, MARYLAND  
 6/10/65  
 DATE

RECORDED PLAT BOOK 10 FOLIO 403  
 ON June 17 1965 AMONG THE LAND RECORDS OF  
 HOWARD COUNTY, MD.

MULLER, RAPHEL & ASSOCIATES  
 PROFESSIONAL ENGINEERS & SURVEYORS  
 2010 DEERFIELD AVE  
 TOWSON, MARYLAND

- AREA -

LOTS	: .995 ACRES
ROADS	: .325 ACRES
TOTAL AREA	: 1.320 ACRES

- DATUM -  
 HORIZONTAL: MDCS - BETHANY  
 VERTICAL: U.S.C. & G.S. - LEATHER AZIMUTH MARK

- CERTIFICATION -

I HEREBY CERTIFY THAT THIS PLAT REPRESENTS A SUBDIVISION OF LAND MADE BY ME, THAT ALL MONUMENTS SHOWN HEREON ACTUALLY EXIST, THAT THEIR LOCATION, SIZE AND MATERIAL ARE CORRECTLY SHOWN IN ACCORDANCE WITH SECTIONS 59A TO 62 OF ARTICLE 17 OF THE ANNOTATED CODE OF MARYLAND 1957 AS AMENDED 1959.

*Eugene F. Raphael*  
 EUGENE F. RAPHEL, REGISTRATION NO. 2246  
 4/21/65  
 DATE

APPROVED.....	DATE
<i>Wilma M. Sanna</i> CHAIRMAN, PLANNING COMMISSION	6-2-65
<i>Thomas G. Harris Jr.</i> DIRECTOR, PLANNING COMMISSION	6-9-65
<i>Herbert S. Neill</i> COUNTY ROADS SUPERINTENDENT	6-2-65
<i>W. O. Lubert</i> CHIEF ENGINEER, METROPOLITAN DISTRICT	5-28-65

FINAL SUBDIVISION PLAT  
 SECTION II-A  
 BETHGATE  
 DH ✓  
 SECOND ELECT. DIST. HOWARD CO., MD.  
 SCALE: 1" = 50' APRIL 21, 1965