

SUBDIVISION PLAT OF

"LOCUST MANOR"

1ST ELECTION DIST., HOWARD COUNTY, MARYLAND

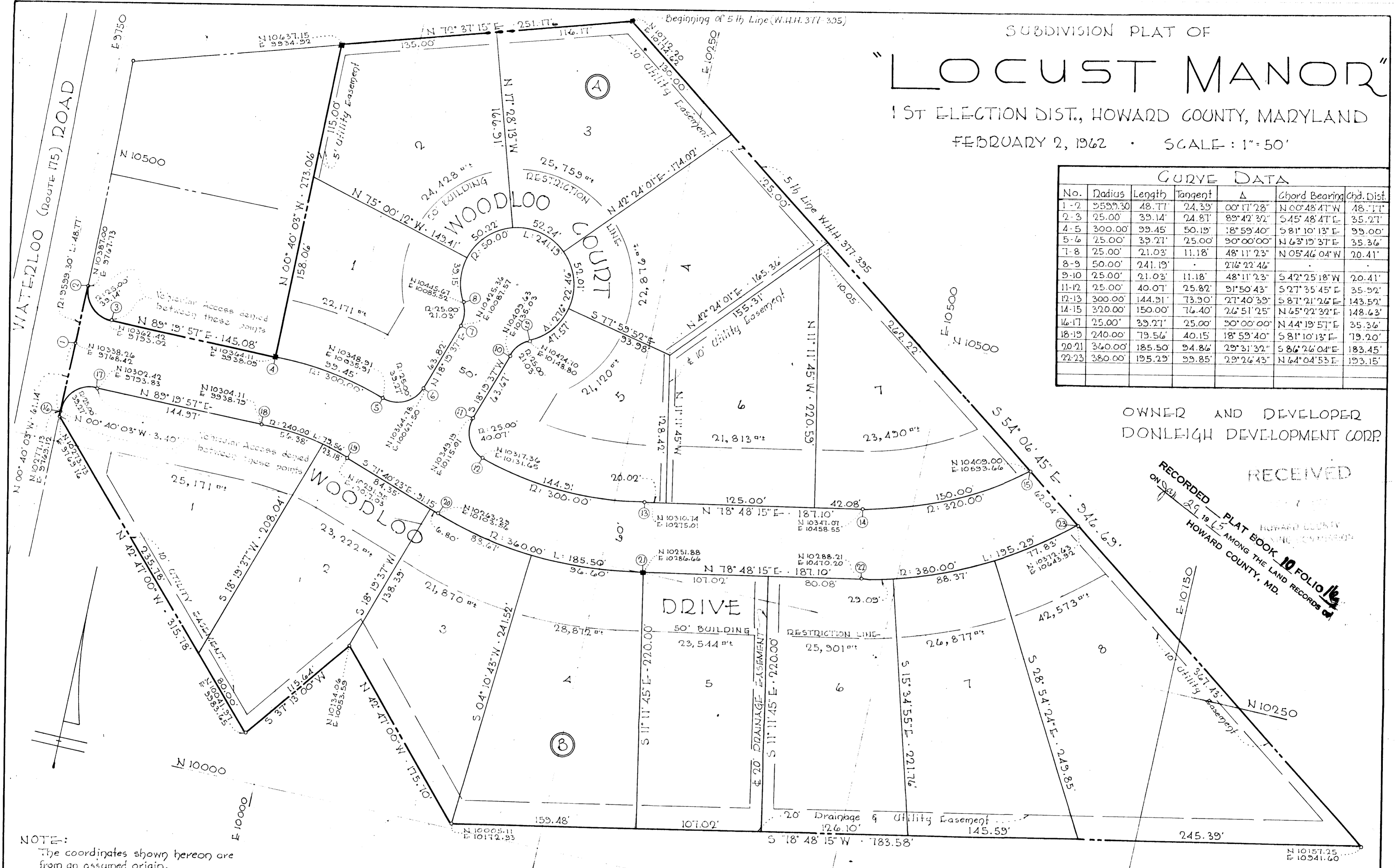
FEBRUARY 2, 1962 • SCALE: 1"=50'

CURVE DATA						
No.	Radius	Length	Tangent	Δ	Chord Bearing	Chd. Dist.
1-2	25.00'	48.77'	24.39'	00°11'28"	N00°48'41"W	48.11'
2-3	25.00'	39.14'	24.81'	89°42'32"	S45°48'41"E	35.27'
4-5	300.00'	99.45'	50.19'	18°59'40"	S81°10'13"E	99.00'
5-6	25.00'	39.21'	25.00'	90°00'00"	N63°19'37"E	35.36'
7-8	25.00'	21.03'	11.18'	48°11'23"	N05°46'04"W	20.41'
8-9	50.00'	241.19'		216°22'46"		
9-10	25.00'	21.03'	11.18'	48°11'23"	S42°25'18"W	20.41'
11-12	25.00'	40.07'	25.82'	91°50'43"	S27°35'45"E	35.92'
12-13	300.00'	144.91'	73.90'	27°40'39"	S87°21'26"E	143.59'
14-15	320.00'	150.00'	76.40'	26°51'25"	N65°22'32"E	148.63'
16-17	25.00'	39.21'	25.00'	90°00'00"	N44°19'57"E	35.36'
18-19	240.00'	79.56'	40.15'	18°59'40"	S81°10'13"E	79.20'
20-21	360.00'	185.50'	94.86'	29°31'32"	S86°26'04"E	183.45'
22-23	380.00'	195.29'	99.85'	29°26'43"	N64°04'53"E	193.15'

OWNER AND DEVELOPER
DONLEIGH DEVELOPMENT CORP.

RECEIVED

RECORDED PLAT BOOK 10 FOLIO 16
ON FEB 29 1962 AMONG THE LAND RECORDS OF
HOWARD COUNTY, MD.



NOTE:
The coordinates shown hereon are from an assumed origin.

APPROVED: HOWARD COUNTY PLANNING COMM.
William K. Farny - 1-27-65
 Chairman Date
Thomas D. Harris, Jr. - 1-28-65
 Director Date
 APPROVED: HOWARD COUNTY HIGHWAYS DEPT.
Herman S. O'Neill - 1-28-65
 County Engineer Date
 APPROVED: HOWARD COUNTY METROPOLITAN COMM.
W. O. Sulbert - 1-28-65
 Chief Engineer Date

CIVIL ENGINEER'S CERTIFICATE
 We, Donleigh Development Corp., owners of the property shown and described hereon, adopt this plan of subdivision and reserve the fee simple title to the beds of the streets and/or roads shown hereon, and in consideration of the plat by the Planning Commission of Howard County, we for ourselves, our heirs or assigns do hereby give and grant unto the Board of County Commissioners of Howard County, the right and option to acquire for the consideration of One Dollar, the fee simple title to the beds of the streets and/or roads shown hereon within the period of five years from the date of the recording of this plat among the Land Records of Howard County, Maryland.
 Witness our hands and seals this 28th day of January, 1962.
Donleigh Development Corp.
Thomas D. Harris, Jr.

ENGINEER'S CERTIFICATE
 I, Curt A.H. Deschke, hereby certify that the plan shown hereon is correct, that it, a subdivision of a part of the land which by deed dated Dec. 1, 1961 and recorded among the Land Records of Howard County, Maryland, in Liber VI.111.377 at Folio 395 was granted and conveyed by Virgil L. Lough and Coline L. Lough, his wife to Donleigh Development Corp., and that Concrete Monuments marked thus ■ are in place as shown.
 I further certify that the requirements of Section 72-B, Article 17 of the Annotated Code of Maryland (as amended) as far as they relate to the making of this plat have been complied with.
 2/2/62
 DATE: *Curt A.H. Deschke*
 No. 2351

PURDUM & JESCHKE
 ENGINEERS
 24 PARK AVENUE
 ELLICOTT CITY, MD.
 PB 10 F 16