

ENGINEER'S CERTIFICATE

I hereby certify that I have carefully surveyed this property and that the subdivision plan shown hereon is correct; that it is a subdivision of part of the lands conveyed by Henry M. Witt and Helen L. Witt, his wife, to Howard County Development Corporation by deed dated August 21, 1953 and recorded in Liber MWB-248 at Folio 267, among the Land Records of Howard County, Maryland, and that all pipes shown thus or actually exist, and that their location, size and material are correctly shown in accordance with Section 72-B of Article 17 of the Annotated Code of Maryland, 1947 Supplement. The total area included in the plan of subdivision is 0.9987 Acres.

December 21, 1962

A. James O'Mara
 A. JAMES O'MARA
 Registered Engineer & Land
 Surveyor Md. No. 2066

OWNERS' DEDICATION

We, Howard County Development Corporation, a Maryland Corporation, by Henry M. Witt, President and Helen L. Witt, Secretary, owners of the property shown and described hereon, adopt this plan of subdivision and establish the building restriction line as shown.

There are no suits of action, leases, liens or trusts on the property included in this plan of subdivision, except a certain deed of trust and the parties in interest thereto have below indicated their assent.

December 21, 1962

HOWARD COUNTY DEVELOPMENT CORP.

Smith H. Pardon
 Witness

Henry M. Witt
 HENRY M. WITT, President

Smith H. Pardon
 Witness

Helen L. Witt
 HELEN L. WITT, Secretary

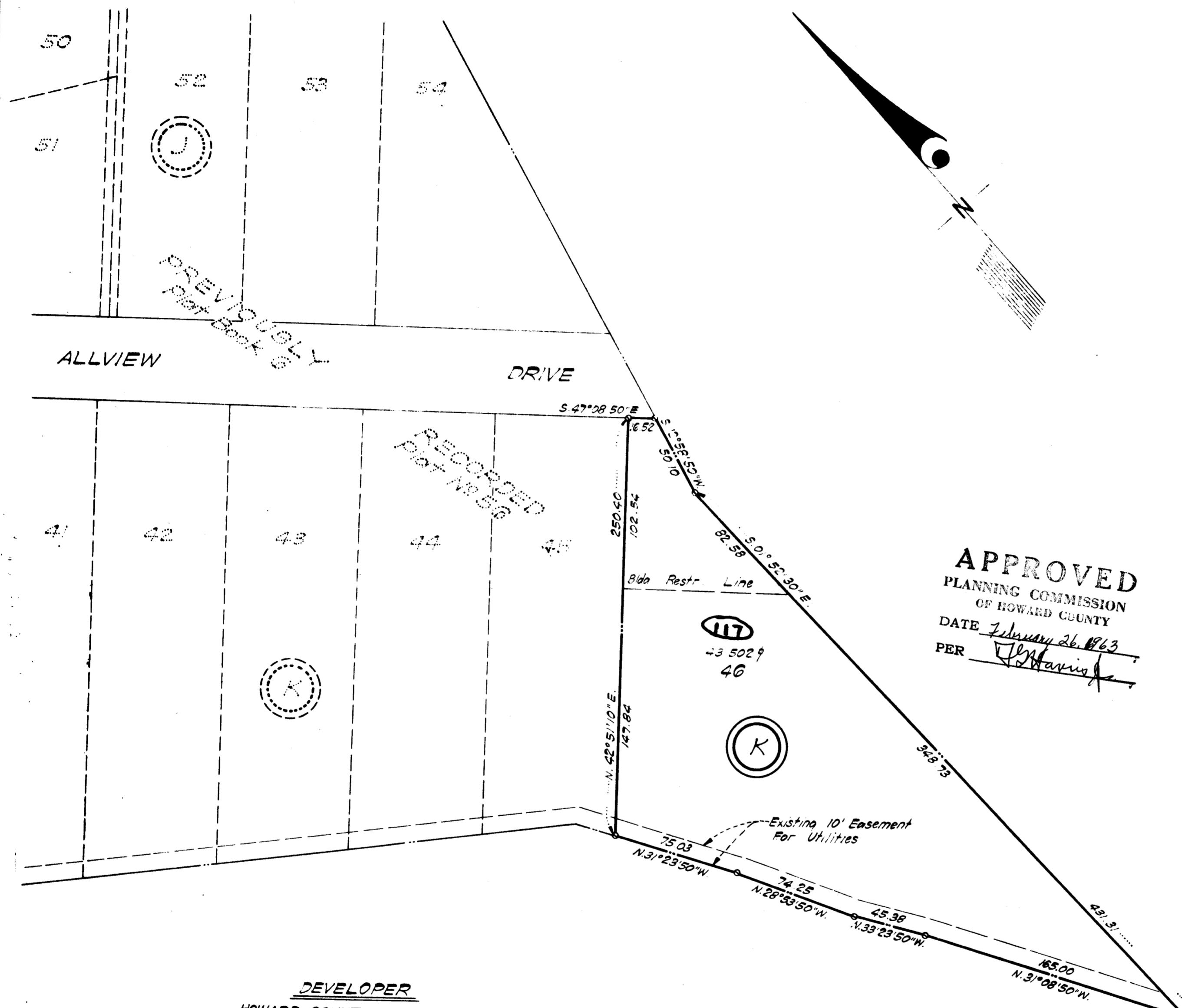
We hereby assent to this plan of subdivision.

James Banks
 Witness

James M. Ryan
 JAMES M. RYAN, Trustee

James Banks
 Witness

Hervey G. Machen
 HERVEY G. MACHEN, Trustee



APPROVED
 PLANNING COMMISSION
 OF HOWARD COUNTY
 DATE *January 26, 1963*
 PER *[Signature]*

DEVELOPER
 HOWARD COUNTY DEVELOPMENT CORP.
 *2 Allview Drive
 Ellicott City, Md.

**LOT 46, BLOCK K
 ALLVIEW ESTATES**

SIXTH ELECTION DISTRICT
 HOWARD COUNTY, MARYLAND

SCALE: 1" = 50'

DECEMBER, 1962

HOWARD COUNTY PLANNING COMMISSION APPROVED: _____ CHAIRMAN PLANNING DIRECTOR	HOWARD COUNTY DEPARTMENT OF ROADS APPROVED: _____ SUPERVISOR	HOWARD COUNTY METROPOLITAN COMMISSION APPROVED: _____ CHIEF ENGINEER
---	--	--

RECORDED - PLAT BOOK *9* FOLIO *18*
 ON *March 7* 19 *63* AMONG THE LAND RECORDS OF
 HOWARD COUNTY, MD.

GREENHORNE & O'MARA
 ENGINEERS & SURVEYORS
 6715 KENILWORTH AVE.
 RIVERDALE, MD.