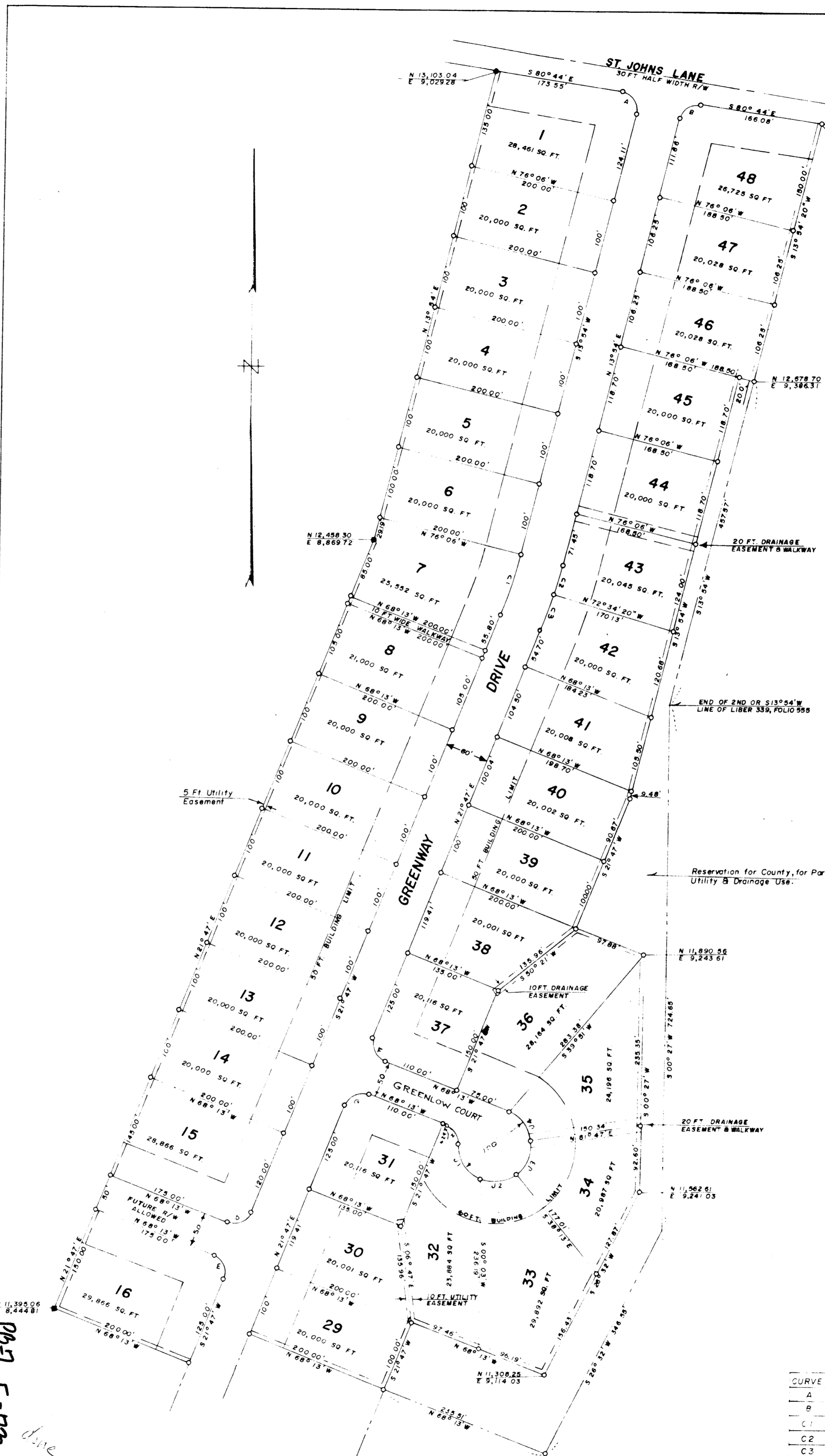


111



OWNERS DEDICATION
 I, Eugene B. Heilman, President of Yale Contractors Inc., owner of the property shown and described hereon adopt this plan of subdivision and reserve the fee simple title to the beds of the streets and/or roads shown hereon, and in consideration of the approval of this plan by the Planning Commission of Howard County, I, or my assigns do hereby give and grant unto the Board of County Commissioners of Howard County the right and option to acquire for the consideration of One Dollar the fee simple title to the beds of the streets and/or roads shown hereon, within the period of five years from the date of the recording of this plat among the Land Records of Howard County.
 Witness my hand and seal this 20th day of October 1959

Eugene B. Heilman
 Eugene B. Heilman, President

ENGINEERS CERTIFICATE
 I, hereby certify that the plan shown hereon is correct, that it is a subdivision of a part of the land which by deed dated September 19, 1959 and recorded among the Land Records of Howard County in Liber No. 335, Folio 555 etc. was granted and conveyed by Joseph H. Boone and wife to Yale Contractors Inc. and that iron pipes marked thus o and concrete monuments marked thus m are in place as shown hereon.
 I further certify that the requirements of Section 72A to 72D of the Annotated Code of Maryland (Title Clerk of Court - Subtitle Clerk of Circuit Court) as far as they relate to the marking of this plat and setting of markers have been complied with.

Clayton M. Skinner Jr.
 Clayton M. Skinner Jr. Reg. Engineer and Land Surveyor No. 2237

MAP OF BRINKLEIGH
 SECTION FIVE
 SECOND ELECTION DISTRICT OF HOWARD COUNTY
 ELLICOTT CITY, MARYLAND
 SCALE: 1 IN. = 100 FT. OCTOBER 1959

Coordinates - Assumed
 Area in lots 8.088 Acres
 Area in roads 3.716 Acres
 Total 21.264 Acres

CURVE DATA

CURVE	RADIUS	ANGLE	ARC	TANGENT	CHORD
A	25.00	44° 38'	4.29	27.1	N 53° 25' W 36.76
B	25.00	85° 22'	37.25	23.06	S 56° 35' W 23.90
C1	67.8	07° 53'	85.82	42.98	S 17° 51' 30" W 85.75
C2	483.81	03° 31' 40"	42.10	2.06	N 15° 23' 50" E 42.10
C3	683.81	04° 21' 20"	51.98	26.00	N 19° 36' 20" E 51.97
D	25.00	90° 00'	39.27	25.00	S 66° 47' W 35.36
E	25.00	90° 00'	39.27	25.00	N 23° 13' W 35.36
F	25.00	90° 00'	39.27	25.00	N 23° 13' W 35.36
G	25.00	90° 00'	39.27	25.00	S 66° 47' W 35.36
H	25.00	70° 32'	30.77	17.68	N 32° 57' W 28.90
J1	50.00	70° 32'	61.55	35.36	N 32° 57' W 57.74
J2	50.00	60° 00'	52.36	28.87	N 81° 47' E 50.00
J3	50.00	60° 00'	52.36	28.87	N 21° 47' E 50.00
J4	50.00	60° 00'	52.36	28.87	N 38° 13' W 50.00

PLAT APPROVED BY

10-29-59 *Wilmer M. Sanner*
 Date Wilmer M. Sanner, Chairman of Planning Commission

10-28-59 *Eugene D. Wheeler*
 Date Eugene D. Wheeler, Planning Director

12/13/59 *Harmon O'Neill*
 Date Harmon O'Neill, County Road Supervisor

PG-7 F-73 done

done