

F.S.P-101

**OWNERS DEDICATION**

We, George L. and Elisabeth P. Howe his wife, owners of the property shown and described hereon adopt this plan of subdivision and reserve the fee simple title to the beds of the streets and/or roads shown hereon, and in consideration of the approval of this plat by the Planning Commission of Howard County, we, or our assigns do hereby give and grant unto the Board of County Commissioners of Howard County, the right and option to acquire for the consideration of One Dollar the fee simple title to the beds of the streets and/or roads shown hereon, within the period of five years from the date of the recording of this plat among the Land Records of Howard County.

Witness our hands and seals this 16th day of May 1959

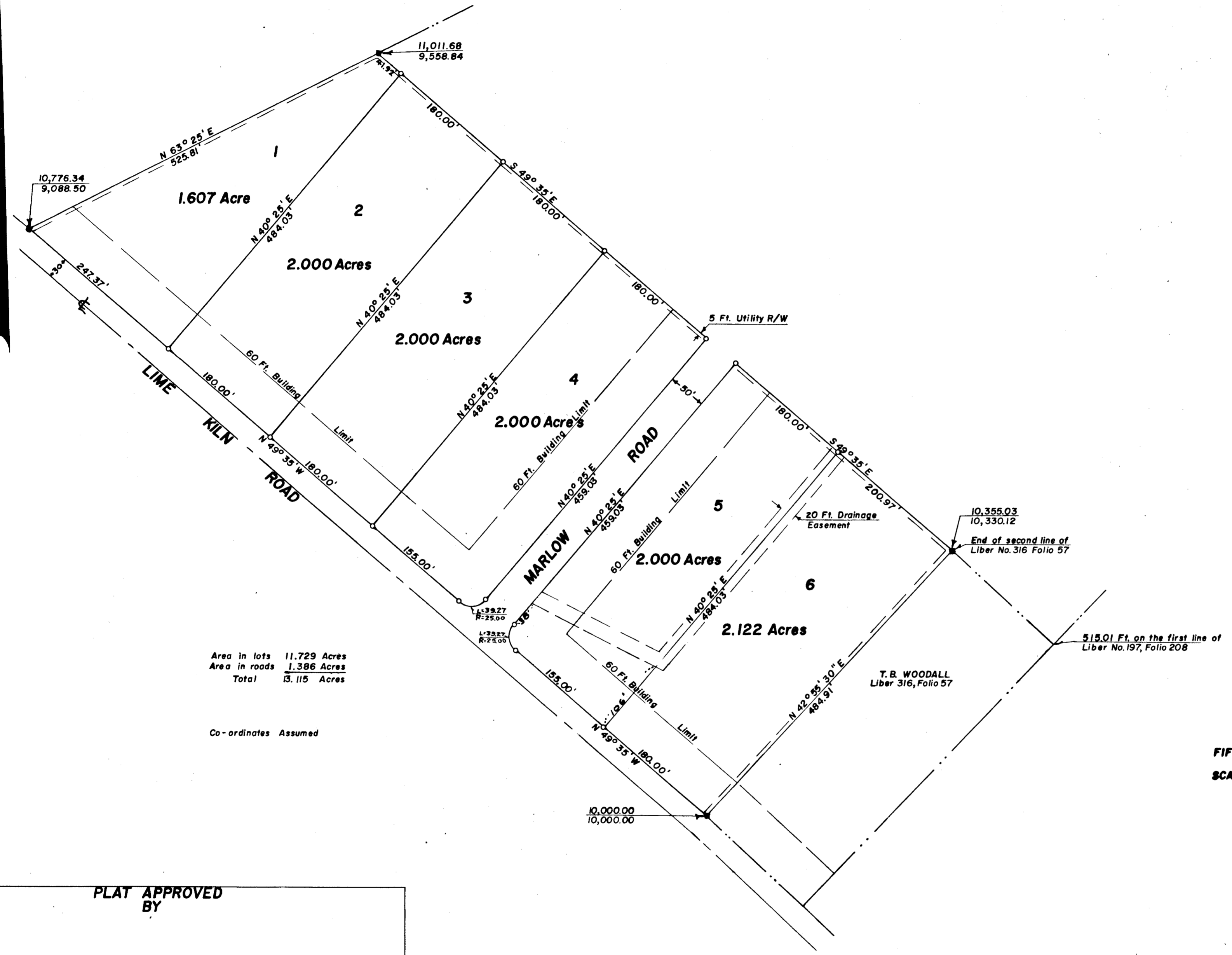
George L. Howe  
George L. Howe

Elisabeth P. Howe  
Elisabeth P. Howe

**ENGINEER'S CERTIFICATE**

I, hereby certify that the plan shown hereon is correct; that it is a subdivision of a part of the land which by deed dated April 7, 1947 and recorded among the Land Records of Howard County in Liber No. 197, Folio 208 was granted and conveyed by Ray Eugene Walters and wife to George L. Howe and wife and that iron pipes marked thus  $\circ$  and concrete monuments marked thus  $\bullet$  are in place as shown hereon. I further certify that the requirements of Section 72 A to 72 D of the Annotated Code of Maryland (Title Clerk of Court - Subtitle Clerk of Circuit Court) as far as they relate to the marking of this plat and setting of markers have been complied with.

Claude M. Skinner Jr.  
Claude M. Skinner Jr. Reg. Engineer and Land Surveyor No. 2237



Area in lots 11.729 Acres  
Area in roads 1.386 Acres  
Total 13.115 Acres

Co-ordinates Assumed

**MAP OF  
HOLLY HOUSE DIVISION  
FIFTH ELECTION DISTRICT OF HOWARD COUNTY  
FULTON, MARYLAND  
SCALE: 1 IN. = 100 FT. MAY 1959**

**PLAT APPROVED BY**

Date                      Wilmer M. Sanner, Chairman of Planning Commission

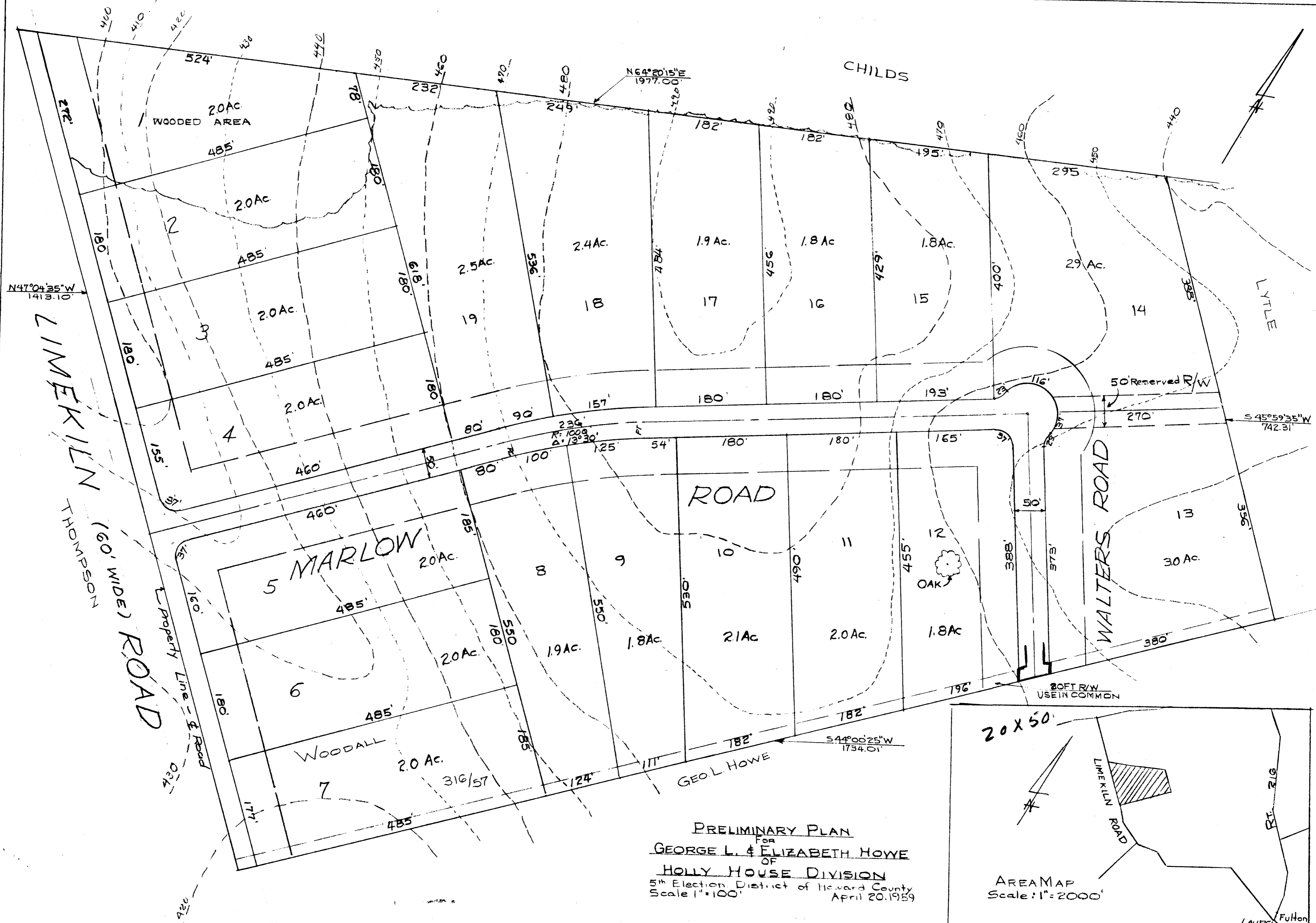
Date                      Eugene D. Wheeler, Planning Director

Date                      Herman O'Neill County Roads Supervisor

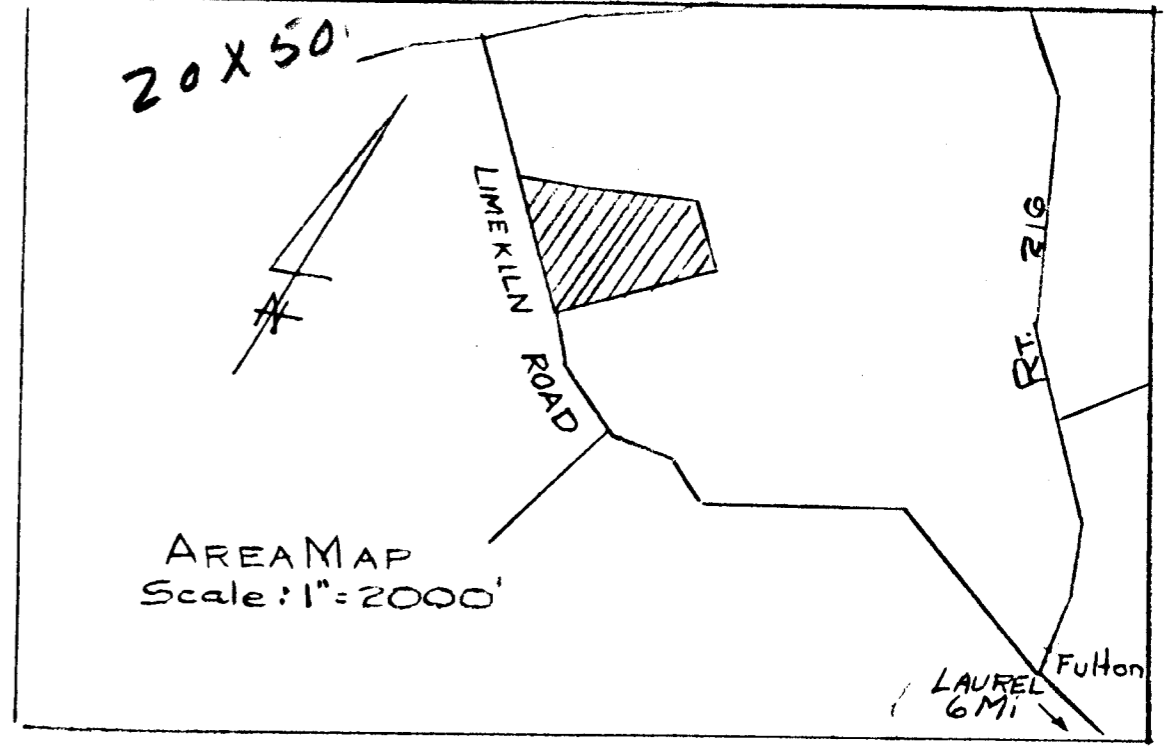
F.S.P-101-304

PLAT BOOK-7  
Folio - 22





PRELIMINARY PLAN  
 For  
 GEORGE L. & ELIZABETH HOWE  
 OF  
 HOLLY HOUSE DIVISION  
 5th Election District of Howard County  
 Scale 1" = 100' April 20, 1959



304