

## Stray Currents

DACCO SCI, INC. investigated the presence of stray currents in the area surrounding the cathodically protected Colonial pipelines east from US Route 29 between MD Route 100 and MD Route 108. Nine (9) sites of varying distances and orientations from the Colonial pipelines were monitored. These sites and their respective data appear below:

### Dapple Court and Dower Drive

Stray current tests were conducted near the intersection of Dapple Court and Dower Drive. A map and photograph of the location are shown below in Figure 49 and Figure 50, respectively. Measured stray currents indicate a maximum peak-to-peak potential shift of 0.80 volts on the east-west axis.

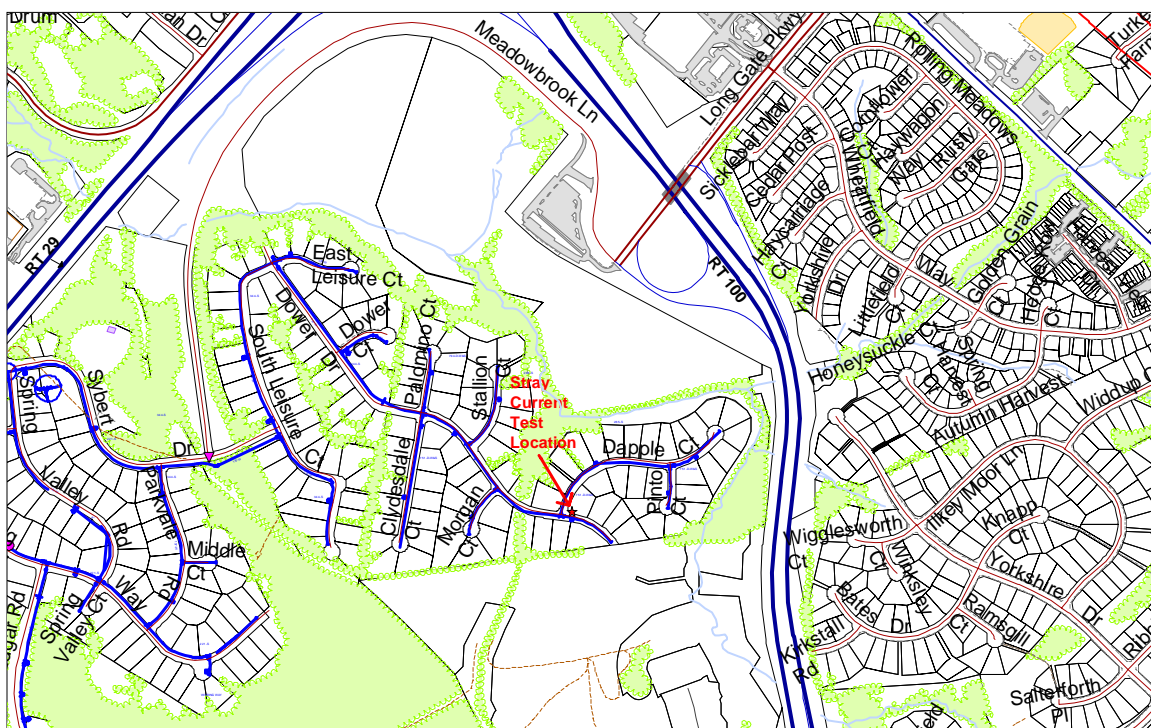
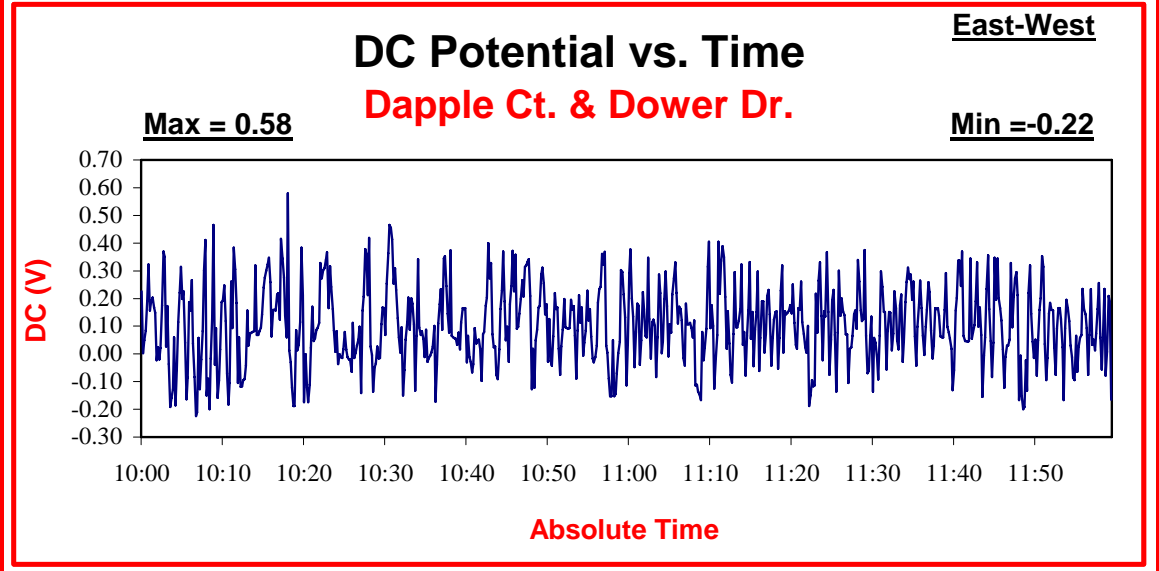
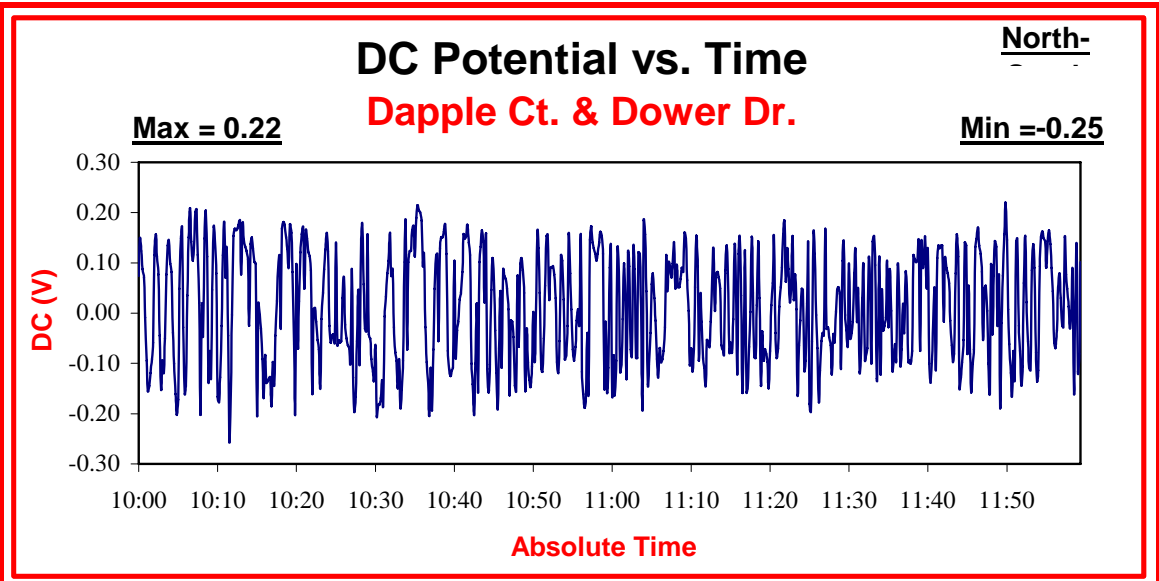


Figure 49 – Stray current test location near Dapple Court and Dower Drive



**Figure 50 – Measuring stray currents near Dapple Court and Dower Drive**



<b>Location:</b>	Dapple Court & Dower Drive	
<b>GPS Location:</b>	N 39° 14.525', W 76° 49.173'	
	<b>North-South</b>	<b>East-West</b>
<b>Date:</b>	2/28/2007	2/28/2007
<b>Time:</b>	10:00:37	10:00:37
<b>Maximum (V):</b>	0.22	0.58
<b>Minimum (V):</b>	-0.25	-0.22
<b>DC Potential Shifts (V):</b>	0.47	0.80