

<b>Location:</b>	Rocky Gorge Reservoir	
<b>GPS Location:</b>	N 39° 08.027', W 76° 53.535'	
<b>Output:</b>	29 Volts / 1 Amp	
	<b>North-South</b>	<b>East-West</b>
<b>Date:</b>	6/29/2005	6/29/2005
<b>Time:</b>	10:32:07	10:32:07
<b>Maximum (V):</b>	1.14	1.22
<b>Minimum (V):</b>	-1.43	-2.04
<b>DC Potential Shifts (V):</b>	2.57	3.26

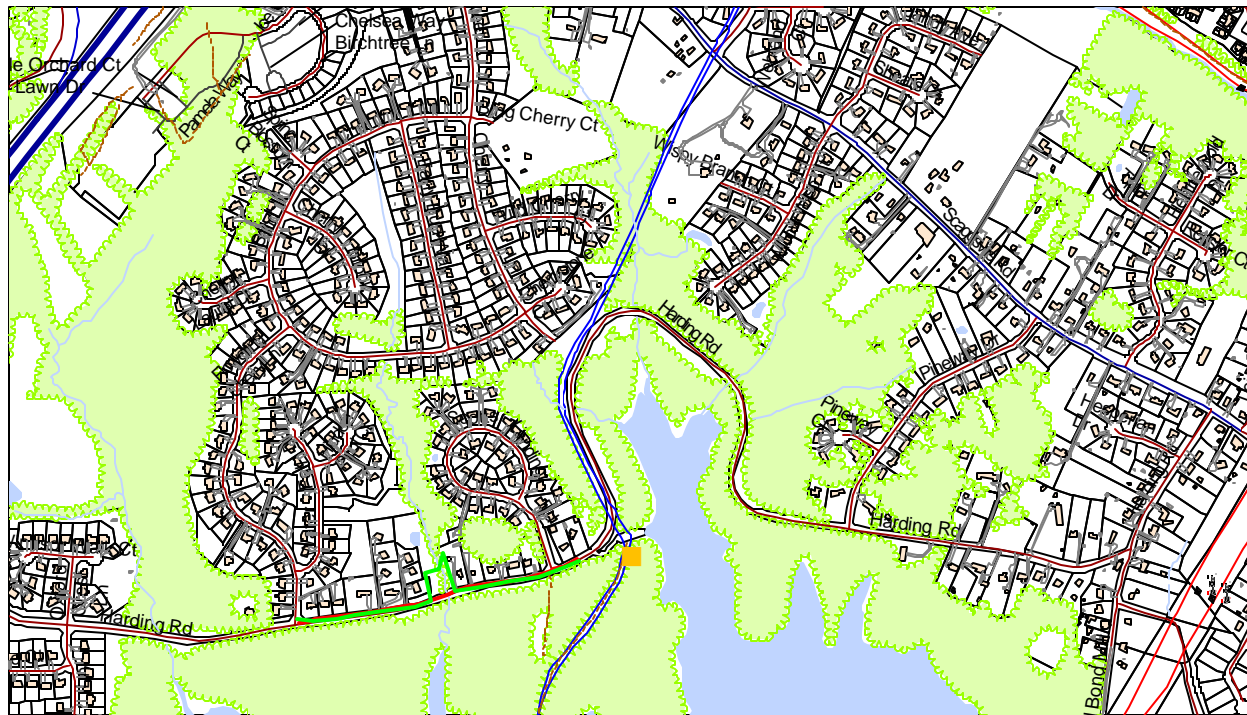


Figure 45 - Location of Impressed Current Rectifier COL1



Figure 46 - Impressed Current Rectifier COL1