

VERTICAL CURVE DATA
SERVICE ROAD NO. 3

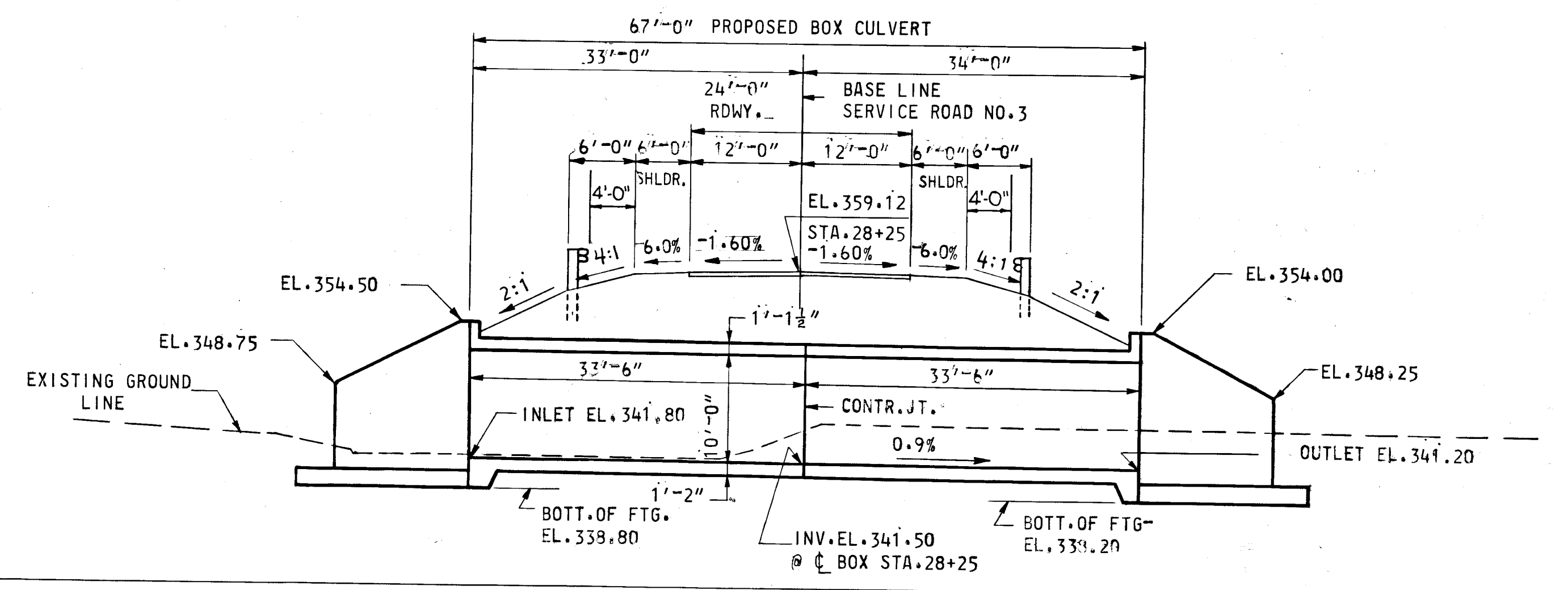
P.V.C. STA. 26+50
ELEV. 359.621

V.C. 300'

P.V.T. STA. 29+50
ELEV. 359.670

-0.715% +0.748%

PLAN
SCALE: 1" = 10'-0"



SECTION A-A
SCALE: 1" = 10'-0"

GENERAL NOTES:

- SPECIFICATIONS** - S.R.C. SPECIFICATIONS DATED MARCH 1968 AND SPECIAL PROVISIONS FOR MATERIALS AND CONSTRUCTION. A.A.S.H.O. STANDARD SPECIFICATIONS FOR HIGHWAY BRIDGES DATED 1965 INCLUDING 1966 - 1967 INTERIM SPECIFICATIONS FOR DESIGN. $f_c = 1200 \text{ #/SQ. IN.}$
- LOADING** - VERTICAL EARTH BACKFILL = 120 LBS./C.F. (REDUCED BY 30% IN ACCORDANCE WITH DESIGN SPECIFICATIONS CRITERIA) LIVE LOAD, HS20-44.
- CONCRETE** - CLASS A-1 CONCRETE SHALL HAVE A MINIMUM COMPRESSIVE STRENGTH OF 3,000 p.s.i. AT 28 DAYS. SEE SPECIAL PROVISIONS.
- CHAMFER** - ALL EXPOSED CORNERS OF CONCRETE TO BE CHAMFERED WITH MILLED CHAMFER STRIPS. CHAMFER TO BE 3/4"x3/4" UNLESS OTHERWISE NOTED.
- REINFORCING STEEL** - REINFORCING STEEL SHALL BE INTERMEDIATE GRADE. ALL SPLICES SHALL BE LAPPED A MINIMUM OF 24 BAR DIAMETERS UNLESS OTHERWISE NOTED. MINIMUM COVER FOR ANY BAR SHALL BE 2" UNLESS OTHERWISE NOTED.
- DAMPPOOFING** - DAMPPOOFING SHALL BE APPLIED TO OUTSIDE SURFACES OF SIDEWALLS, TOP SURFACES OF TOP SLAB AND PORTIONS OF WINGWALLS AND HEADWALLS THAT ARE IN CONTACT WITH EARTH.

BORING NO. 1 STA. 28+5.00 34' RT. @		BORING NO. 2 STA. 28+24.00 AT @		BORING NO. 3 STA. 28+24.00 29' LT. @	
EL. 340.6	EL. 340.8	EL. 343.2			
0.5' TOPSOIL	1.0' BROWN & GREY COARSE SAND & GRAVEL	0.5' BROWN SANDY SILT			
2.0' BROWN MICCEOUS SANDY SILT	3.5' GREY MICCEOUS SANDY SILT	1.0' BROWN & GREY COARSE SILTY SAND & GRAVEL			
4.0' SANDY SILT	5.0' GREY MICCEOUS SANDY SILT	2.0' BROWN & GREY COARSE SILTY SAND & GRAVEL			
5.0' GREY COARSE SILTY SAND & GRAVEL	6.5' GREY & BROWN MICCEOUS DECOMPOSED ROCK & SILT	4.0' COARSE SILTY SAND & GRAVEL			
6.0' GREY & BROWN MICCEOUS DECOMPOSED ROCK & SILT	9.0' BROWN & GREY MICCEOUS DECOMPOSED ROCK & SILT	5.0' SAND & GRAVEL			
8.0' GREY & BROWN MICCEOUS DECOMPOSED ROCK & SILT	9.0' BROWN & GREY MICCEOUS DECOMPOSED ROCK & SILT	6.0' SAND & GRAVEL			
9.0' GREY & BROWN MICCEOUS DECOMPOSED ROCK & SILT	14.0' BROWN & GREY MICCEOUS DECOMPOSED ROCK & SILT				
10.0' GREY & BROWN MICCEOUS DECOMPOSED ROCK & SILT	14.2' BROWN & GREY MICCEOUS DECOMPOSED ROCK & SILT				
14.0' GREY & BROWN MICCEOUS DECOMPOSED ROCK & SILT	19.0' BROWN & GREY MICCEOUS DECOMPOSED ROCK & SILT				
15.0' GREY & BROWN MICCEOUS DECOMPOSED ROCK & SILT	19.5' BROWN & GREY MICCEOUS DECOMPOSED ROCK & SILT				
19.0' GREY & BROWN MICCEOUS DECOMPOSED ROCK & SILT	19.5' BROWN & GREY MICCEOUS DECOMPOSED ROCK & SILT				
23.5' GREY & BROWN MICCEOUS DECOMPOSED ROCK & SILT					
WATER: 3.5' (1HR.) 3/11/69	WATER: 0.0' (1HR.) 3/6/69 0.0' (24HRS) 3/7/69	WATER: 1.5' (1HR.) 3/7/69 1.5' (72HRS) 3/10/69			

ESTIMATED QUANTITIES

ITEM	UNIT	ESTIMATED QUANTITY
CLASS 3 EXCAVATION	CU. YD.	180
CLASS 4 EXCAVATION	CU. YD.	450
CLASS A-1 CONCRETE - FOOTINGS	CU. YD.	46
CLASS A-1 CONCRETE - SUBSTRUCTURE	CU. YD.	220
REINFORCEMENT BARS	LB.	36,000

DENOTES BORING LOCATION
 HAMMER DROP: 30 INCHES
 DRIVE HAMMER: 300LB.
 SPOON HAMMER: 140 LB.
 CASING SIZE: 2-1/2 INCHES
 SPOON SIZE: 2 INCHES
 SIZE OF CORE: 1-3/8 INCHES
 SIZE OF BIT: 2 INCHES
 CORE BARREL TYPE: DOUBLE TUBE
 NOTE: THIRD COLUMN IN BORING LOG INDICATES BLOWS ON SAMPLER SPOON OR ROCK CORE RECOVERY.

HYDROLOGIC AND HYDRAULIC DATA

GAGING STATION: NONE

DRAINAGE AREA = 3.04 SQ. MI. = 1.950 ACRES

MAXIMUM DISCHARGE = c. f. s. = 685

MAXIMUM DISCHARGE OF RECORD = c. f. s. = 685

PROPOSED STRUCTURE

DRAINAGE AREA = 3.04 SQ. MI. = 1.950 ACRES

STORMWATER DISCHARGE (For 1 Year Storm) c. f. s. = 685

TIDAL FLOW (From Volume Impounded up to High Tide Elev.) c. f. s. = NONE

TOTAL MAXIMUM DISCHARGE c. f. s. = 685

MAXIMUM FLOW DEPTH AT H.W. FEET = 8.5

OPENING

OPENING TO H.W. SQ. FT. = 204

VELOCITY AT OUTLET FT. PER SEC. = 6.75

EXISTING STRUCTURE (APPROX. 500' DOWNSTREAM)

TYPE DOUBLE 12'-0" X 10'-0" R.C. BOX CULVERT

WATERWAY 204 SQ. FT.

UNDERCLEARANCE 10'-0"

DATE BUILT 1,950

OWNERSHIP S.R.C.

DISPOSITION TO REMAIN IN PLACE

REMARKS

UTILITIES

STORM SEWERS NONE

SANITARY SEWERS NONE

WATER MAINS NONE

GAS MAINS NONE

ELECTRIC WIRES NONE

OTHER NONE

TRAFFIC DATA

TRAFFIC COUNT = _____ DATE _____

DESIGN SPEED = _____ m. p. h.

DATUM B.M. #23
ON SYCAMORE 250' LT.
@ STA. 589+42, U.S. 29
(R.R. SPIKE)
BK. #06737-PAGE 85
ELEV. 251.44

Prepared by:
SUCKAP-T-H
Consulting Eng.
Baltimore, Md.

OLD COLUMBIA PIKE

STATE OF MARYLAND
STATE ROADS COMMISSION
BALTIMORE, MD.
DOUBLE 12'-0" X 10'-0" BOX CULVERT
AT STA. 28+25
SERVICE ROAD NO. 3 OVER HAMMOND BRANCH
GENERAL PLAN & ELEVATION

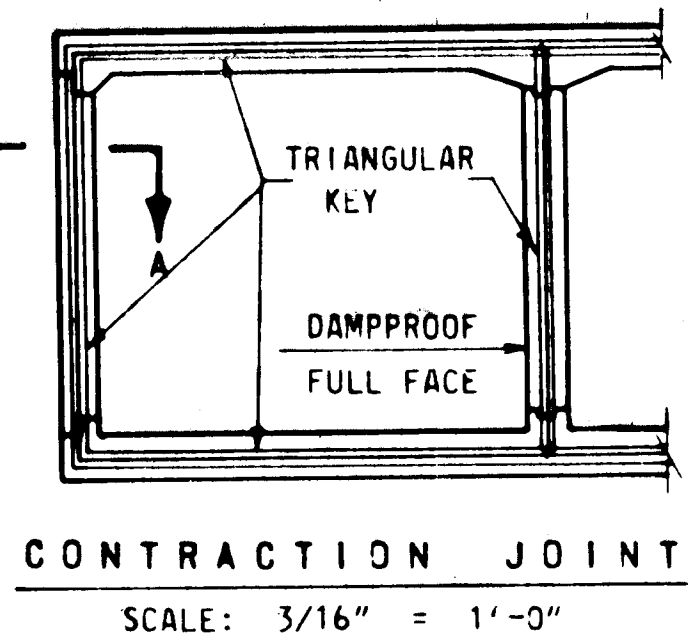
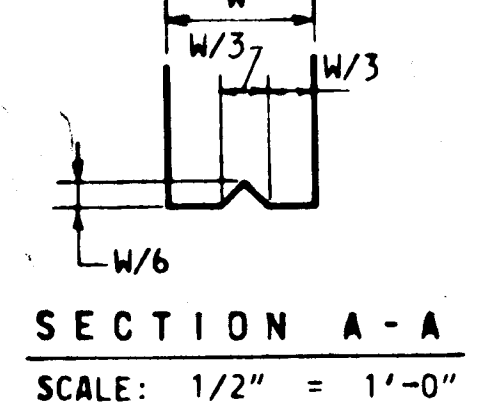
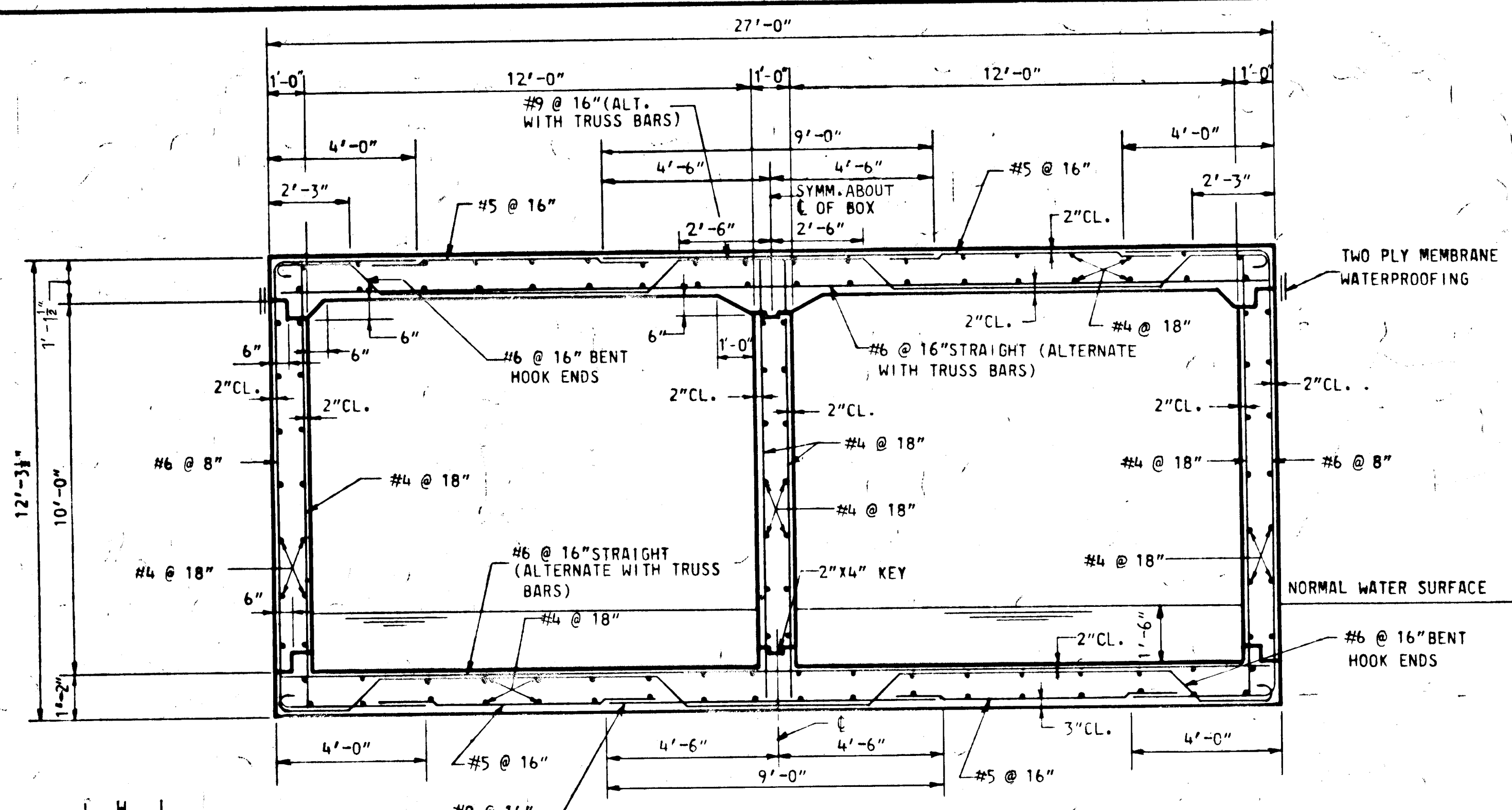
SCALE AS SHOWN DATE Feb. 1969 CONTRACT 40314-2871

MADE BY G.P.
TRACED BY _____
CHECKED BY C.F.
M. D. P.
APR 16 1969
Chief, Bureau of Special Services

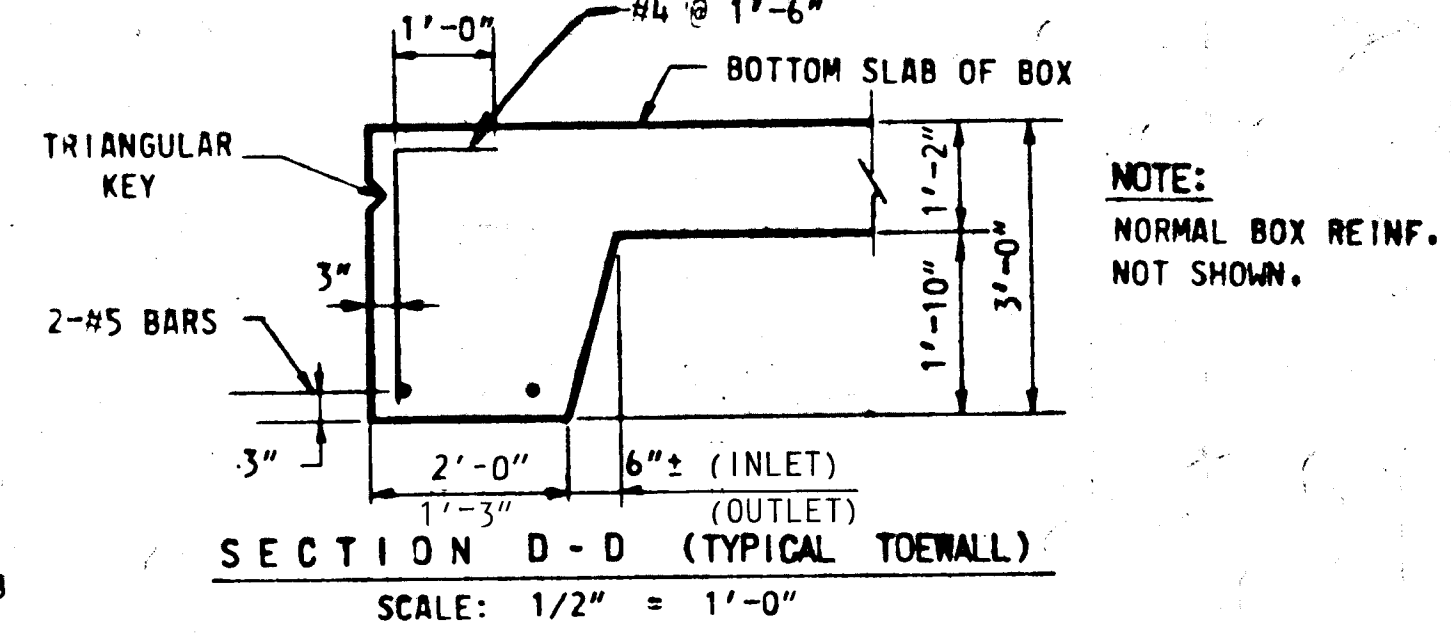
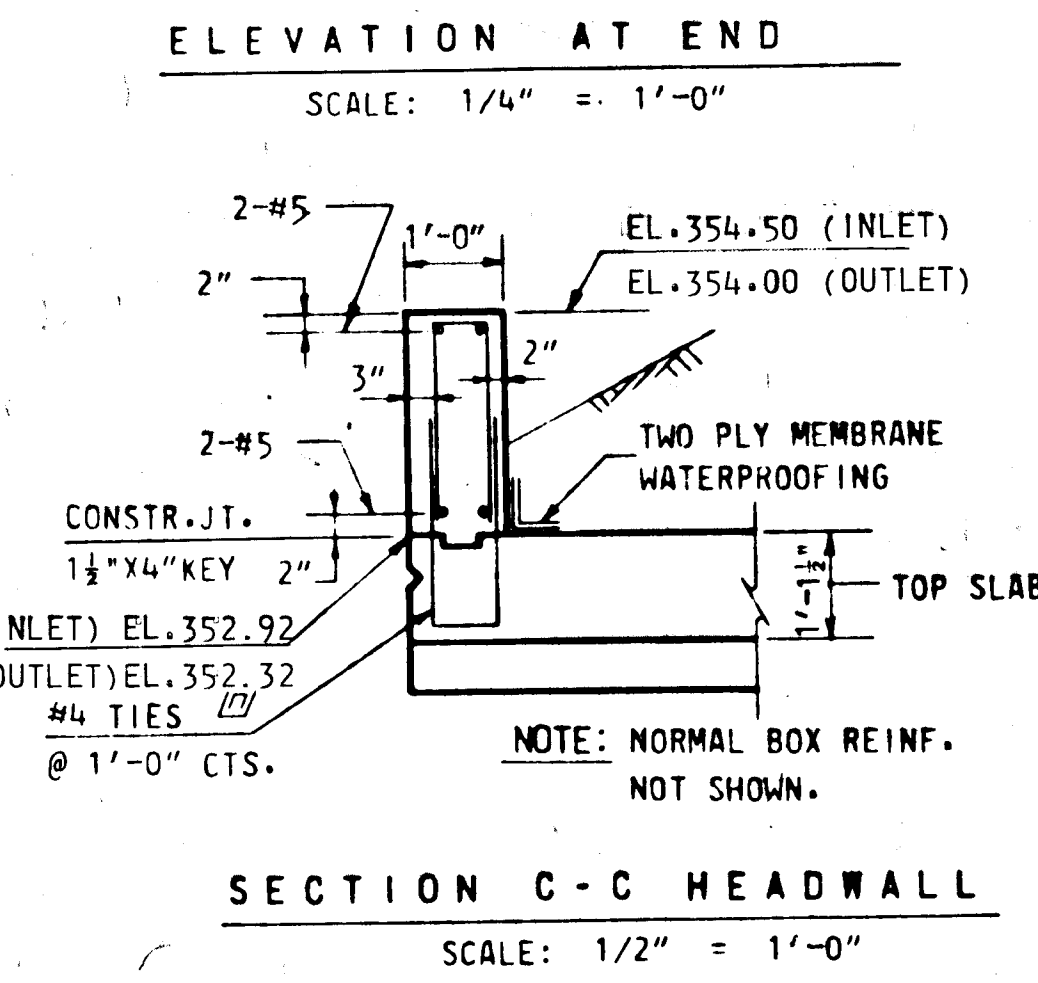
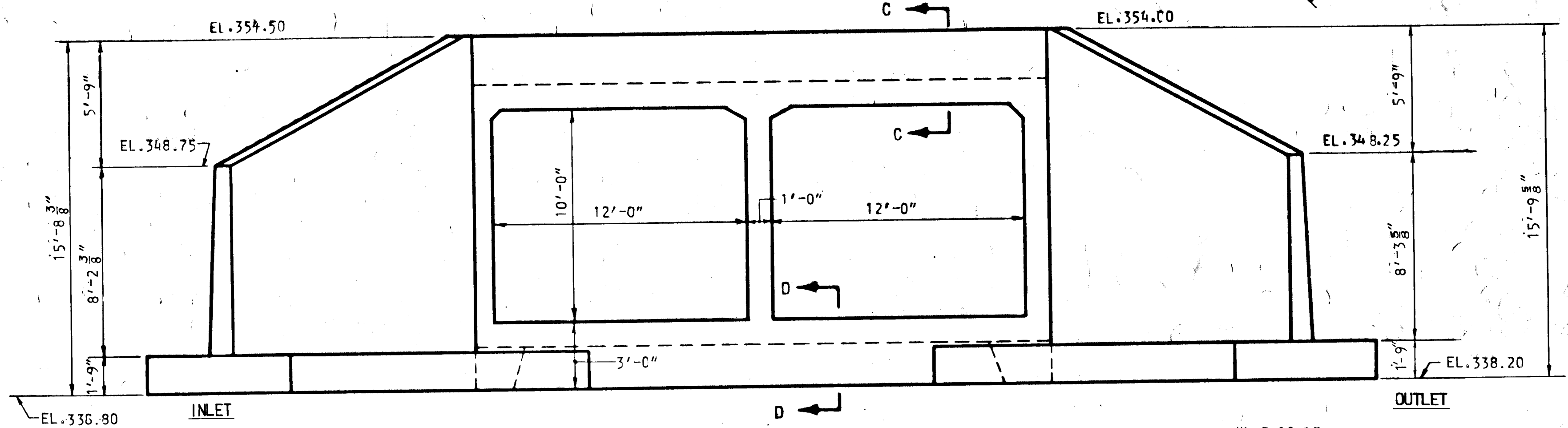
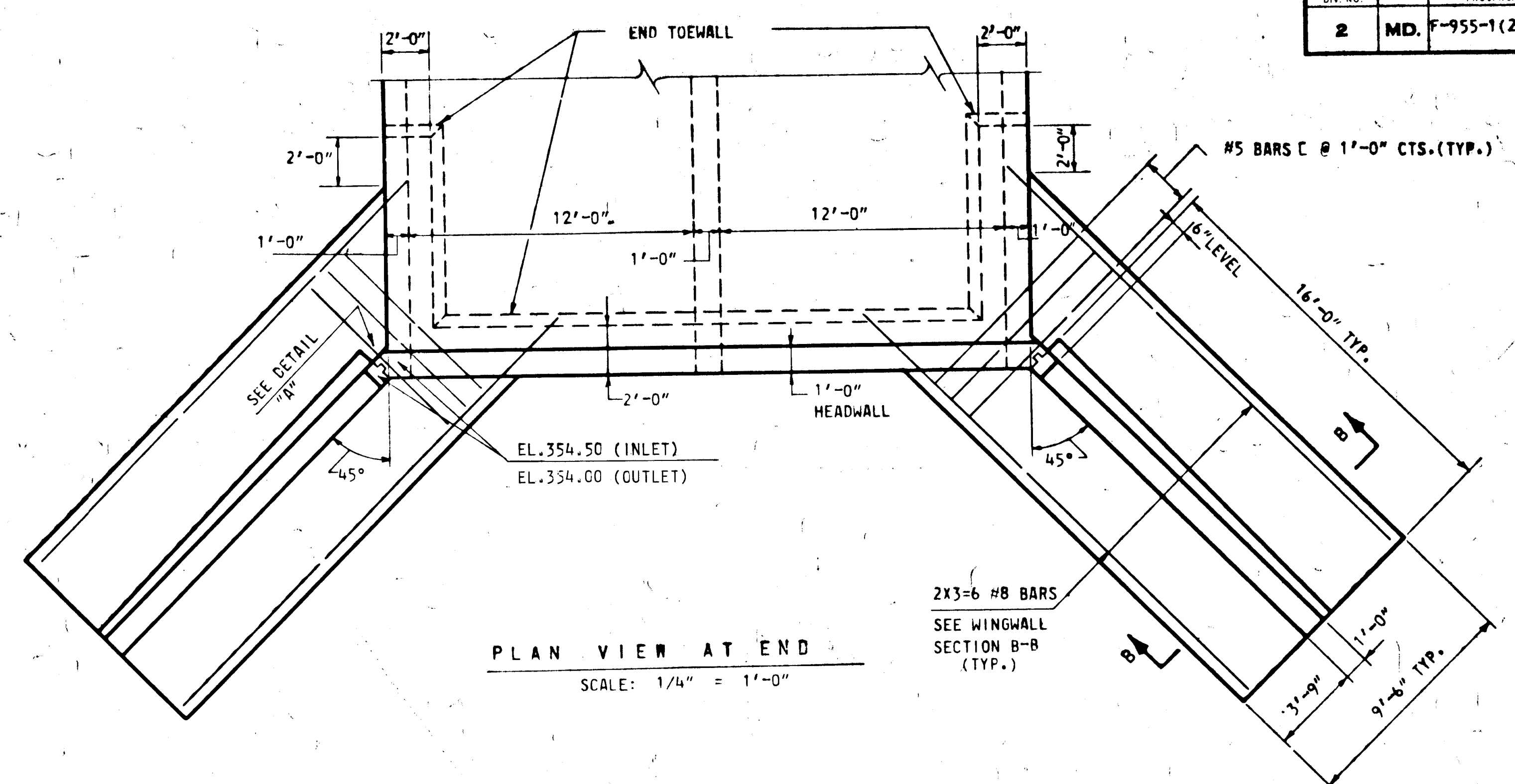
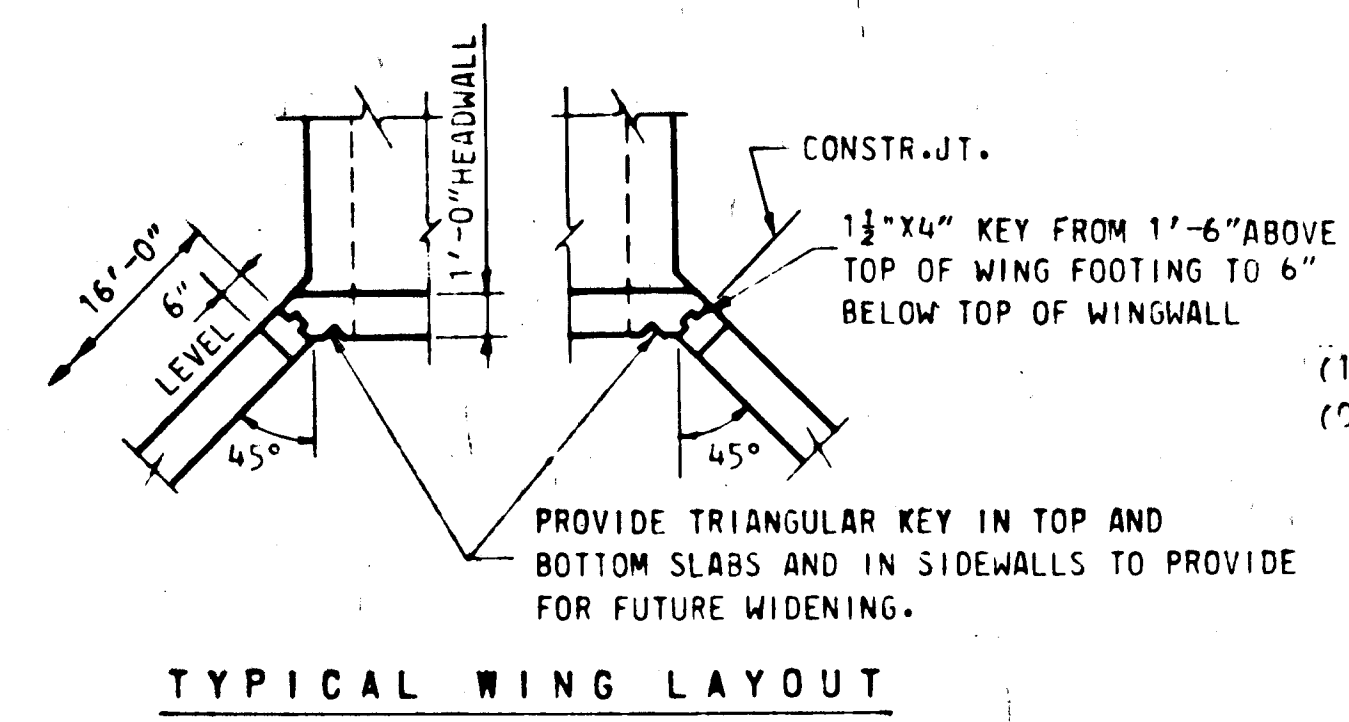
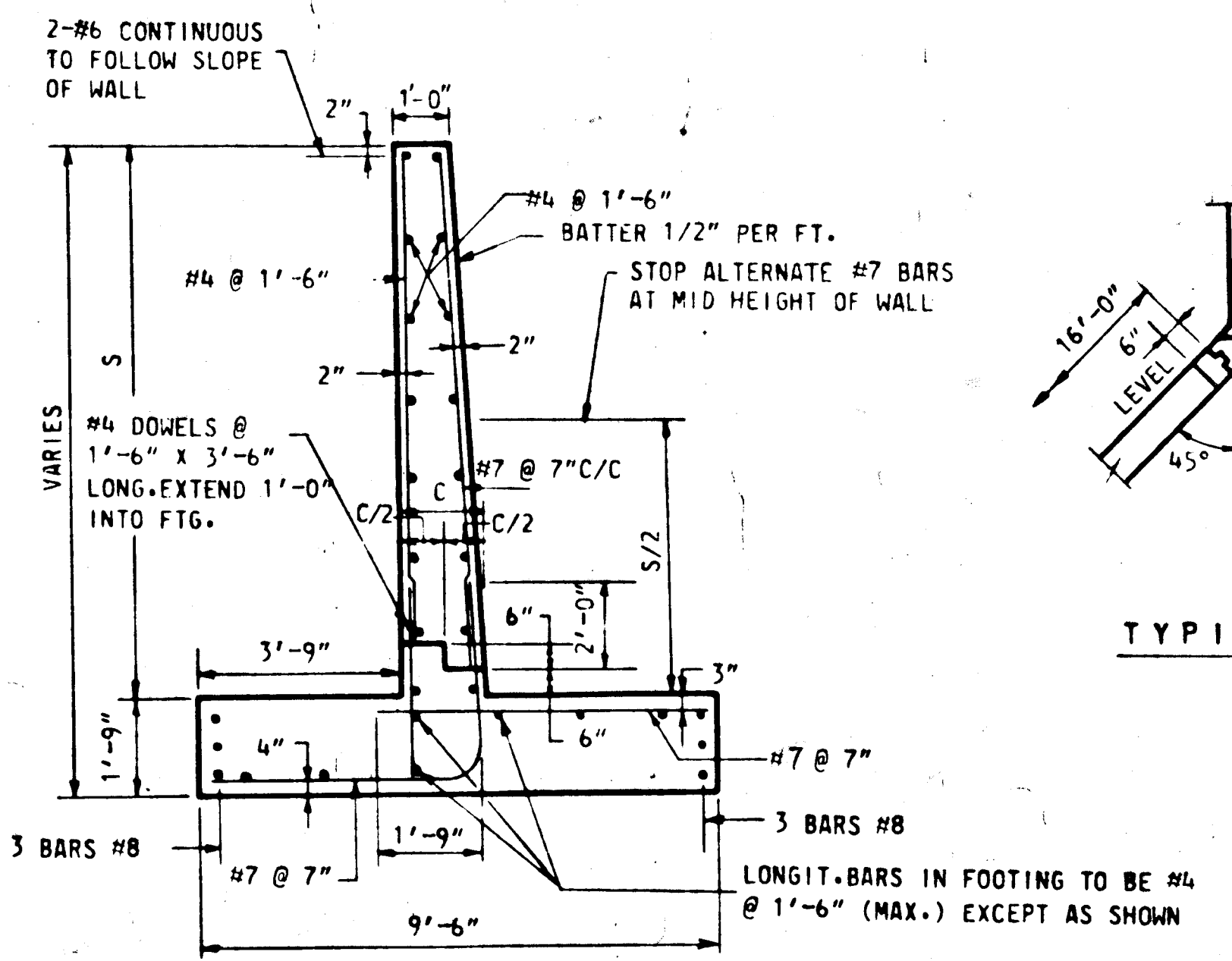
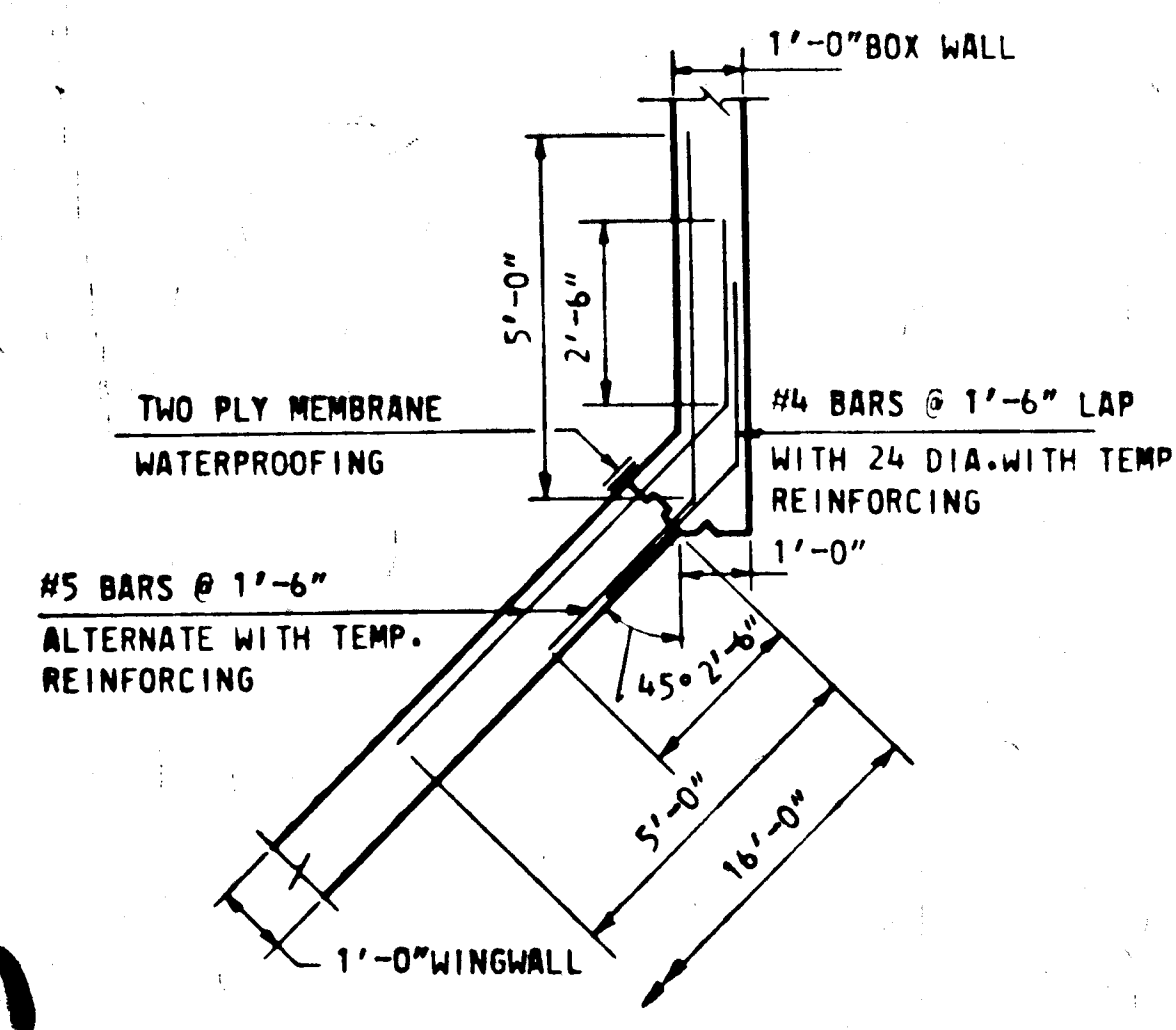
SHEET No. 42 OF 53

1313

SHEET 42 OF 53



NOTE:
REINFORCING STEEL NOT TO EXTEND THRU CONTRACTION JOINT.



NOTE:
NORMAL BOX REINF. NOT SHOWN.

NOTE:
SEE MARYLAND STANDARD CULVERTS DWG. SCCBC 2 OF 2.

Prepared by:
MURPHY-HORN,
Consulting Engineers
Baltimore, Maryland
XXBA-69-002

OLD COLUMBIA PIKE

**STATE OF MARYLAND
STATE ROADS COMMISSION
BALTIMORE, MD.**

DOUBLE 12'-0" x 10'-0" BOX CULVERT
AT STA. 28+25
SERVICE ROAD NO. 3 OVER HAMMOND BRANCH

DETAILS

SCALE AS SHOWN DATE FEB. 1969 CONTRACT HO-314-28-771

MADE BY: G.P.
TRACED BY:
CHECKED BY: C.E.

M. D. P.
APR 16 1969
Chief, Bureau of Special Services

SHEET No. 43 OF 53

1313

13014

Bridge No. H0134

Survey Book No.

File No. 2 Pocket No. 13 Folder No. 8

INDEXED