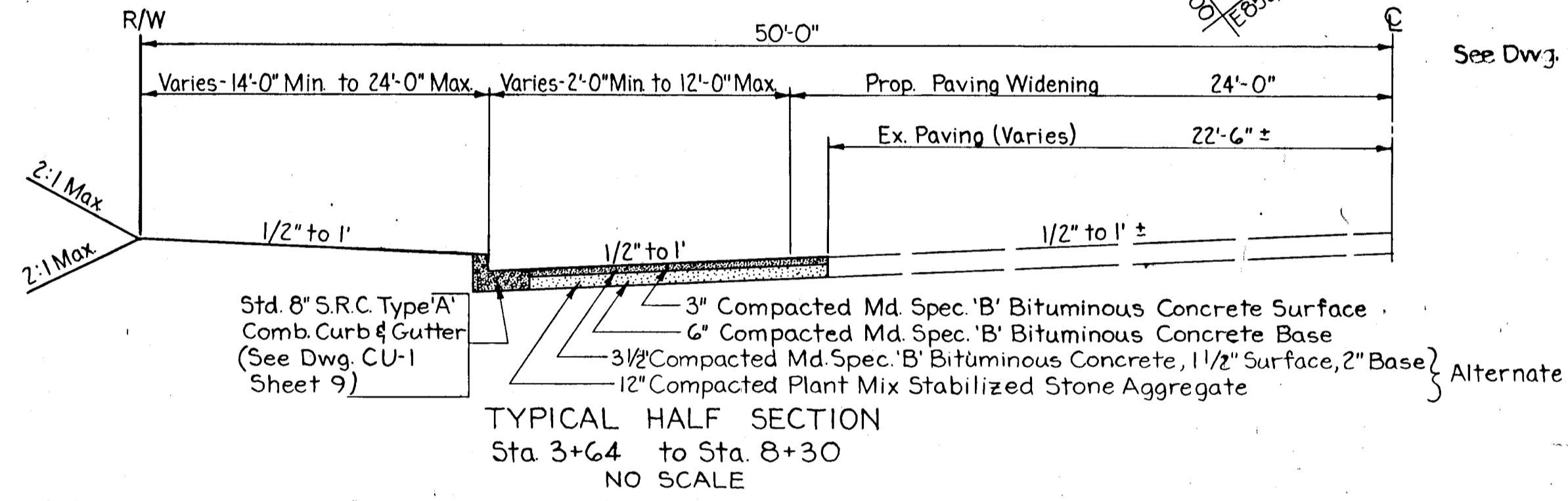
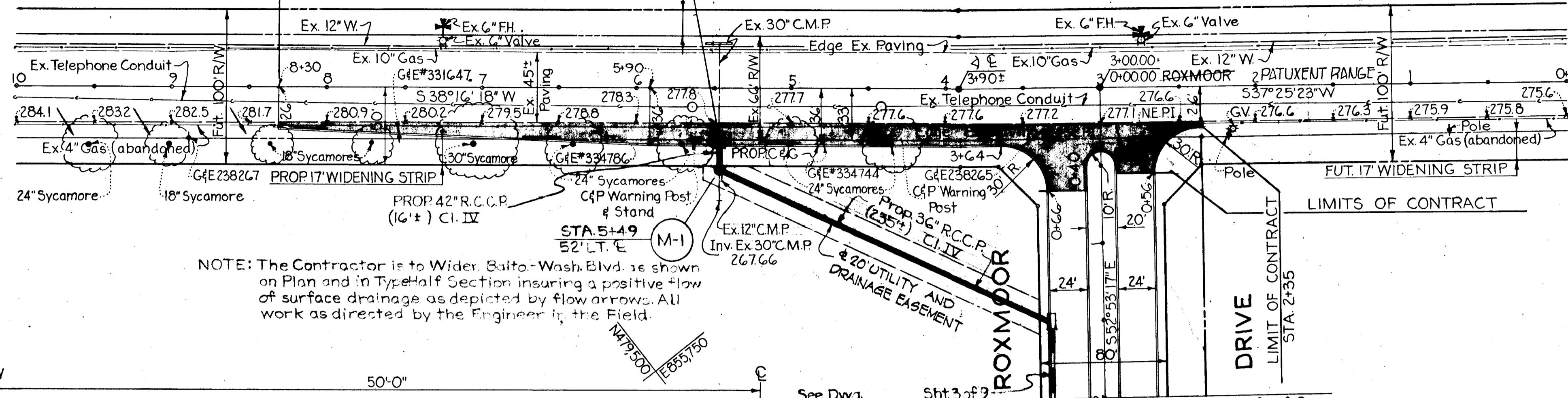


GENERAL NOTES

1. For Profiles Of Storm Drains Shown On This Sheet, See Sht. 8 of 9.
2. Inlet I-10, Shown On This Sheet, Shall Conform To Maryland State Roads Commission Standard Class 'E' Combination Inlet As Shown On Plate IL-5, Sheet 51.
3. See Sheet 1 Of 9 For Drainage Area Map & Location Plan.

BALTIMORE - WASHINGTON BOULEVARD U.S. ROUTE NO. 1



NOTE: The Contractor is to Wider Balto-Wash. Blvd. as shown on Plan and in Typical Section insuring a positive flow of surface drainage as depicted by flow arrows. All work as directed by the Engineer in the Field.

REVISIONS		
DATE	DESCRIPTION	BY
10/31/67	Increase Pipe Size I-10 to I-3	E.J.S.
11/15/67	Changed All Pipe Classes	E.J.S.
11/21/67	Changed 10' Easement to 20'	E.J.S.
9/25/73	Revised As Per As Built	

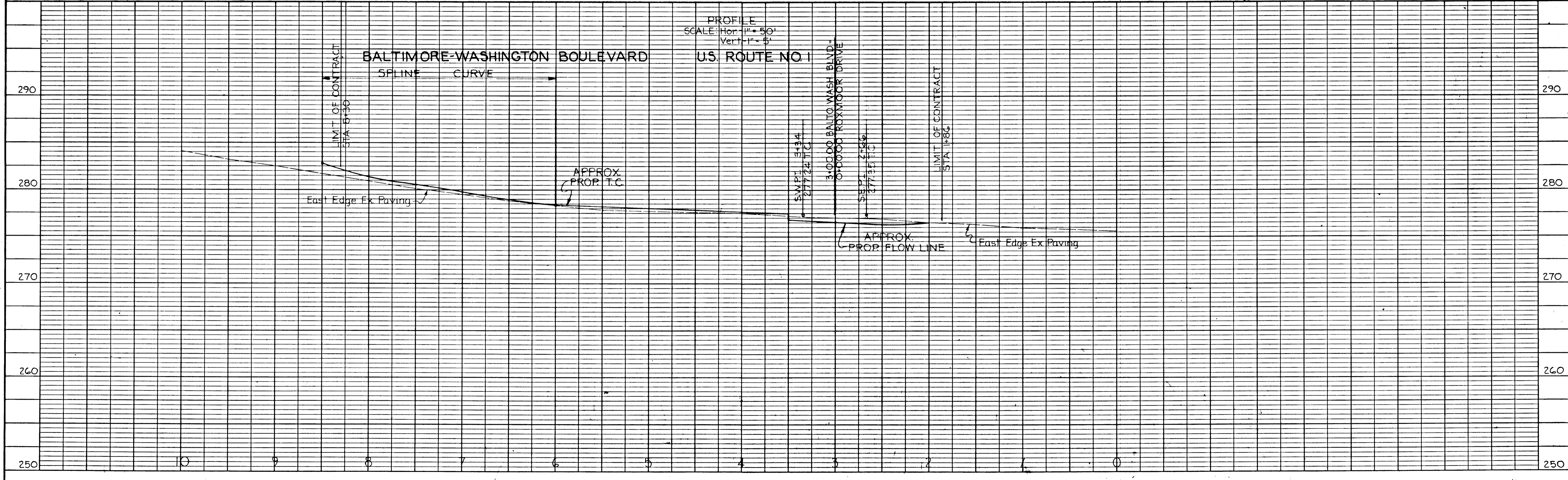
OWNER & DEVELOPER PATAPSCO PROPERTIES, INC. 501 ST. PAUL STREET BALTIMORE, MARYLAND 21202		ENGINEER GEORGE W. STEPHENS, JR. & ASSOC. 303 ALLEGHENY AVE. TOWSON 4, MARYLAND	
APPROVED: HOWARD CO. PLANNING COMM. <i>J.H. Clouston</i> SENIOR ENGINEER		DATE 10/4/67	
APPROVED: HOWARD CO. ROADS DEPT. <i>G.W. Welland</i> ROADS ENGINEER		DATE 12-29-67	
APPROVED: HOWARD CO. MET. COMM. <i>W.O. Filbert</i> CHIEF ENGINEER		DATE 1-30-68	
		REG.# 4407	

PLAN & PROFILE  
BALTIMORE-WASHINGTON BOULEVARD MD. RTE.#1  
SECTION ONE  
**BALTIMORE-WASHINGTON INDUSTRIAL PARK**  
HOWARD CO., MARYLAND ELECT. DIST. NO. 6  
SCALE: AS SHOWN SEPT 25, 1967

STREET CONNECTION DESIGN  
APPROVED: *W.A. Hally, Jr.* SRS. 2/1/68

PLAN	SURVEYED	DATE
	PLOTTED	
	ALIGNMENT CHECKED	
	RT. OF WAY CHECKED	
	NO.	

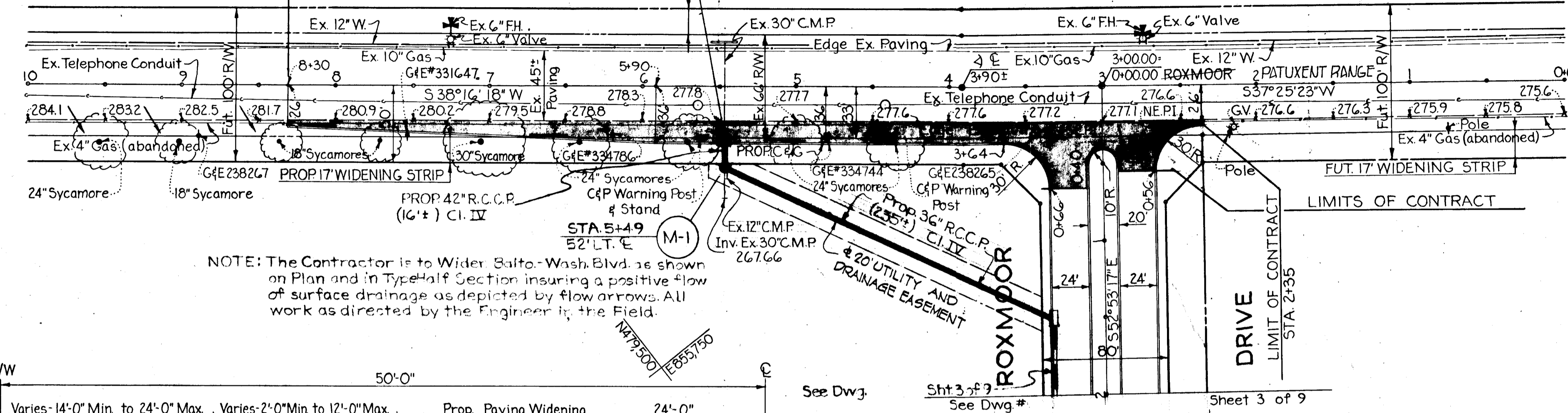
PROFILE	SURVEYED	DATE
	PLOTTED	
	GRADES CHECKED	
	STRUCTURE NOTATIONS CHKO.	
	NO.	



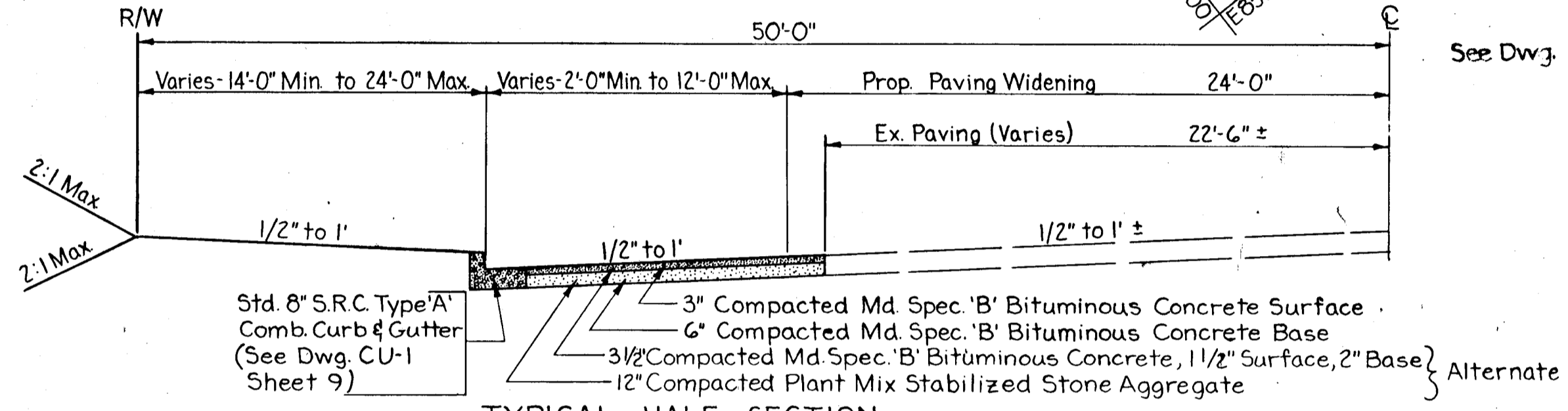
GENERAL NOTES

- For Profiles Of Storm Drains Shown On This Sheet, See Sht. 8 of 9.
- Inlet I-10, Shown On This Sheet, Shall Conform To Maryland State Roads Commission Standard Class 'E' Combination Inlet As Shown On Plate IL-5, Sheet 51.
- See Sheet 1 Of 9 For Drainage Area Map & Location Plan.

BALTIMORE - WASHINGTON BOULEVARD U.S. ROUTE NO. 1



NOTE: The Contractor is to Wider Balto-Wash. Blvd. as shown on Plan and in Typical Half Section insuring a positive flow of surface drainage as depicted by flow arrows. All work as directed by the Engineer in the Field.



TYPICAL HALF SECTION  
Sta 3+64 to Sta 8+30  
NO SCALE

PLAN  
SCALE: 1"=50'

STREET CONNECTION DESIGN  
Approved - *Da. Halley, Jr. Sec. 2/1/68*

REVISIONS		
DATE	DESCRIPTION	BY
10/31/67	Increase Pipe Size I-10 to I-3	E.J.S.
11/15/67	Changed All Pipe Classes	E.J.S.
11/21/67	Changed 10' Easement to 20'	E.J.S.
9/25/73	Revised As Per As Built	

OWNER & DEVELOPER: PATAPSCO PROPERTIES, INC.  
501 ST. PAUL STREET  
BALTIMORE, MARYLAND 21202

ENGINEER: GEORGE W. STEPHENS, JR. & ASSOC.  
303 ALLEGHENY AVE.  
TOWSON 4, MARYLAND

APPROVED: HOWARD CO PLANNING COMM. *J.H. Clouston, Jr.* 2-1-68  
SENIOR ENGINEER DATE

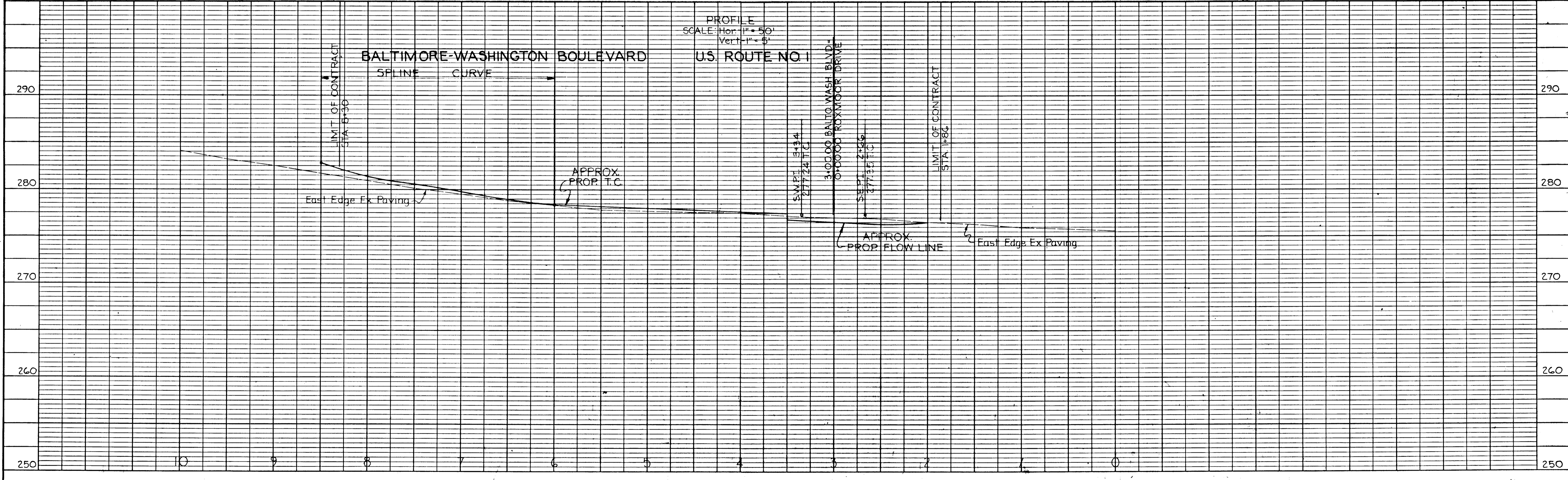
APPROVED: HOWARD CO. ROADS DEPT. *J.W. McKeand* 12-29-67  
ROADS ENGINEER DATE

APPROVED: HOWARD CO. MET. COMM. *W.O. Filbert* 1-30-68  
CHIEF ENGINEER DATE

DATE: 10/2/67

REG.# 4407

PLAN & PROFILE  
BALTIMORE-WASHINGTON BOULEVARD MD. RTE.#1  
SECTION ONE  
**BALTIMORE-WASHINGTON INDUSTRIAL PARK**  
HOWARD CO., MARYLAND ELECT. DIST. NO. 6  
SCALE: AS SHOWN SEPT. 25, 1967



PROFILE  
SCALE: Hor. 1"=50'  
Vert. 1"=5'

PLAN SURVEYED, PLOTTED, & CHECKED BY: [Blank]  
DATE: [Blank]  
NOTE: BOOK NO. [Blank]  
BY: [Blank]

PROFILE SURVEYED, PLOTTED, & CHECKED BY: [Blank]  
DATE: [Blank]  
NOTE: BOOK NO. [Blank]  
BY: [Blank]

PR-73

LIMITS OF COUNTY APPROVAL STA 2+35 TO STA 8+30

PLATE 1, PLAN-PROFILE  
KEUFFEL & ESSER CO.

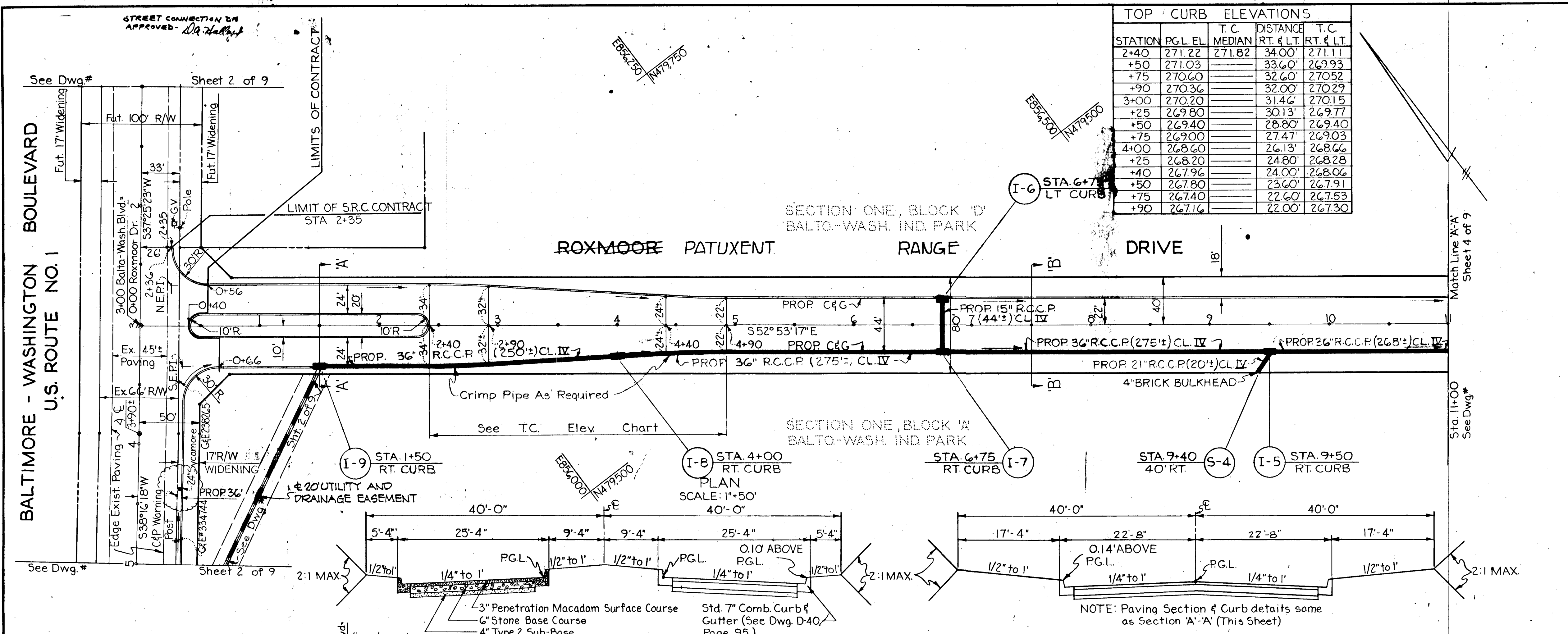
XXBA-68-002

SHEET 2 OF 9

AS-BUILT Feb. 85

DATE	
BY	
PLAN SURVEYED	
PLOTTED	
NOTE BOOK CHECKED	
RT. OF WAY CHECKED	
NO.	

DATE	
BY	
PROFILE SURVEYED	
PLOTTED	
NOTE BOOK CHECKED	
B.M. NOTED	
STRUCTURE NOTATIONS CHECKED	
NO.	



TOP CURB ELEVATIONS					
STATION	P.G.L. EL.	T.C. MEDIAN	DISTANCE RT. & LT.	T.C. RT. & LT.	
2+40	271.22	271.82	34.00'	271.11	
+50	271.03		33.60'	269.93	
+75	270.60		32.60'	270.52	
+90	270.36		32.00'	270.29	
3+00	270.20		31.46'	270.15	
+25	269.80		30.13'	269.77	
+50	269.40		28.80'	269.40	
+75	269.00		27.47'	269.03	
4+00	268.60		26.13'	268.66	
+25	268.20		24.80'	268.28	
+40	267.96		24.00'	268.06	
+50	267.80		23.60'	267.91	
+75	267.40		22.60'	267.53	
+90	267.16		22.00'	267.30	

**GENERAL NOTES**

- All Inlets Show On This Sheet Are Class 'S' Inlets, Double Grate Tandem And Shall Conform To Howard County Road Construction Code & Standard Specifications, Dated Nov. 27, 1962. See Dwg. D-99, Page 154.
- For Profiles Of Storm Drains Shown On This Sheet, See Sheet 8 of 9.
- See Sheet 1 Of 1 For Drainage Area Map & Location Plan.

9/25/73 Revised As Per As Built R.A.P.

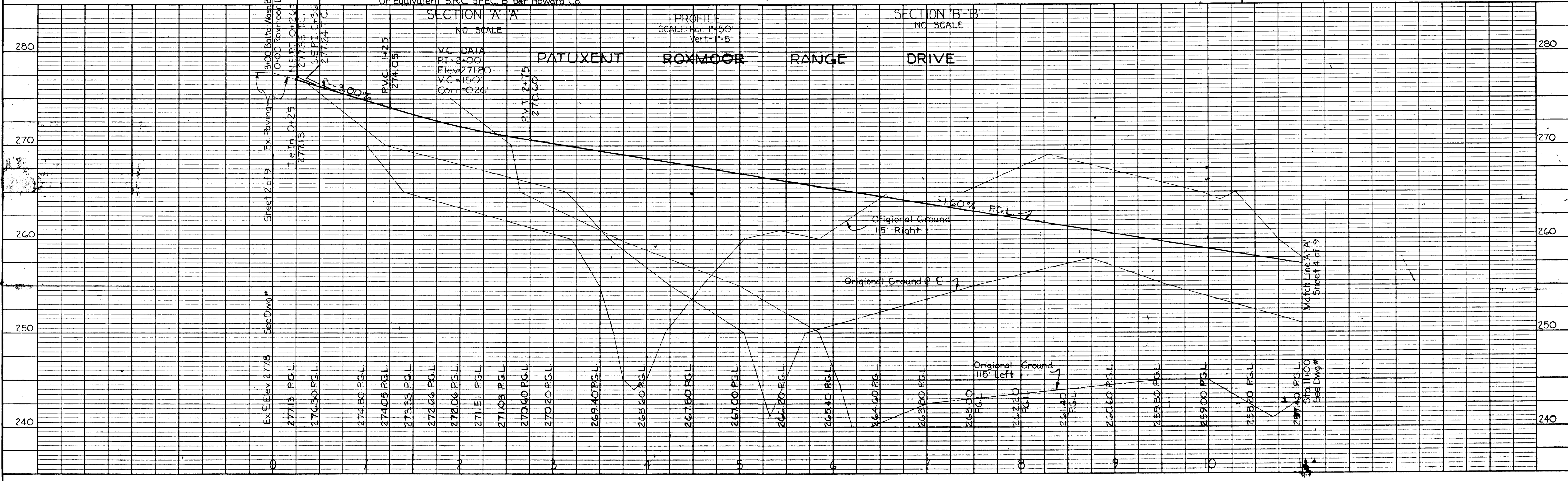
REVISIONS		
DATE	DESCRIPTION	BY
10/31/67	Increase Pipe Size I-9 to I-5	E.J.S.
11/15/67	Changed All Pipe Classes	E.J.S.
11/21/67	Changed 10' Easement to 20' & Changed Roadway Dimensions on Typ. Sections to read from Back of Curb to Back of Curb	E.J.S.
6/6/68	Change 2 Dimensions from back of curb to back of curb (sect. 'A' & 'A') to read 25'-4"	E.J.S.

**OWNER & DEVELOPER**  
PATAPSCO PROPERTIES, INC.  
501 ST. PAUL STREET  
BALTIMORE, MARYLAND 21202

**ENGINEER**  
GEORGE W. STEPHENS, JR. & ASSOC.  
303 ALLEGHENY AVE  
TOWSON 4, MARYLAND

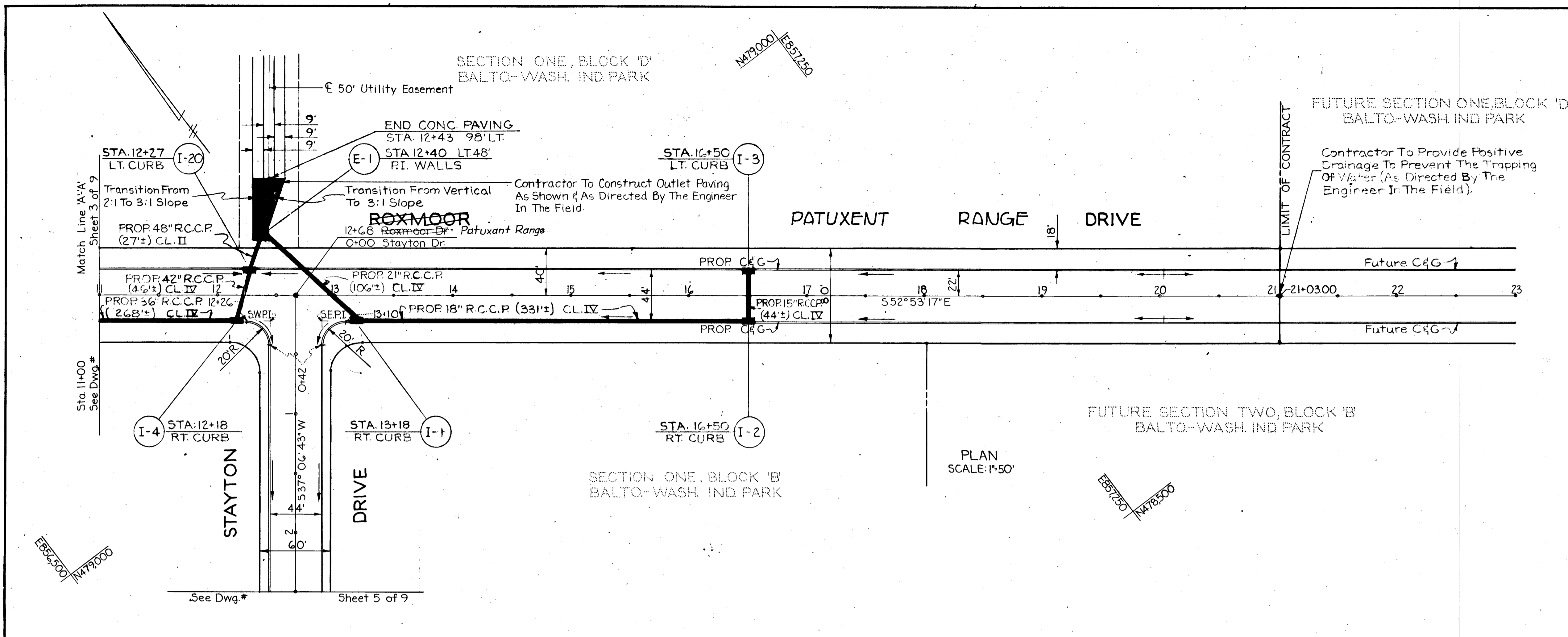
APPROVED: HOWARD CO. PLANNING COMM. 10/4/67  
*J.H. Lawson* SENIOR ENGINEER 2-1-68  
APPROVED: HOWARD CO. ROADS DEPT. 12-29-67  
*B.W. Weiland* ROADS ENGINEER  
APPROVED: HOWARD CO. MET. COMM. 1-30-68  
*W.O. Peltier* CHIEF ENGINEER  
*John Hochstedt* REG.# 4407

PLAN & PROFILE  
**ROXMOOR DRIVE**  
PATUXENT SECTION ONE RANGE  
**BALTIMORE-WASHINGTON INDUSTRIAL PARK**  
HOWARD CO., MARYLAND ELECT. DIST. NO. 6  
SCALE: AS SHOWN SEPT. 25, 1967



DATE	
BY	
SURVEYED	
PLOTTED	
NOTE BOOK	
ALIGNMENT CHECKED	
RT. OF WAY CHECKED	
NO.	

DATE	
BY	
SURVEYED	
PLOTTED	
NOTE BOOK	
STRUCTURE NOTATIONS CHECKED	
NO.	



- GENERAL NOTES
1. For Roadway Section & Curb Detail Of Roxmoor Drive, See Detail, Sheet 3 Of 9
  2. All Inlets Shown On This Sheet Are Class 'S' Inlets, Double Grate Tandem, And Shall Conform To Howard County Road Construction Code, & Standard Specifications, Dated Nov. 27, 1962. See Ewg. 5-99, Page 154
  3. For Profiles Of Storm Drains Shown On This Sheet, See Sheet 8 Of 9.
  4. See Sheet 1 Of 9 For Drainage Area Map & Location Map. 5-See Sheet 1 Of 9 For Outfall Ditch Detail & Plan.

REVISIONS		
DATE	DESCRIPTION	BY
11/15/67	Changed All Pipe Classes	E.J.S.
9/25/73	Revised As Per As Built	R.A.P.

OWNER & DEVELOPER  
PATAPSCO PROPERTIES, INC.  
501 ST. PAUL STREET  
BALTIMORE, MARYLAND 21202

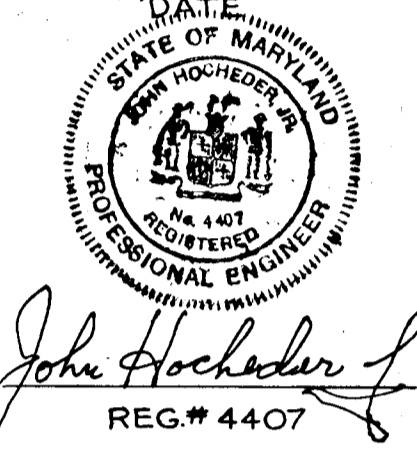
ENGINEER  
GEORGE W. STEPHENS, JR. & ASSOC.  
303 ALLEGHENY AVE.  
TOWSON 4, MARYLAND

APPROVED: HOWARD CO PLANNING COMM. 10/4/67  
*J.H. Clawson* 2-1-68  
SENIOR ENGINEER DATE

APPROVED: HOWARD CO. ROADS DEPT.  
*B.W. McKeane* 12-29-67  
ROADS ENGINEER DATE

APPROVED: HOWARD CO MET. COMM.  
*W.O. Palbert* 1-30-68  
CHIEF ENGINEER DATE

*John Hochstetler*  
REG.# 4407



RATUXENT PLAN & PROFILE RANGE  
ROXMOOR DRIVE  
SECTION ONE  
**BALTIMORE-WASHINGTON INDUSTRIAL PARK**  
HOWARD CO., MARYLAND ELECT. DIST. NO. 6  
SCALE: AS SHOWN SEPT., 1967

