

DATE	
BY	
REVISION	
NOTE BOOK	
NO.	

REVISED
OFFICE OF PLANNING
AND ZONING OF
HOWARD COUNTY
DATE 11/4/75

DIVISION OF LAND DEVELOPMENT
AND TRANSPORTATION PLANNING
HOWARD COUNTY, MARYLAND
DATE 11/4/75

DATE	
BY	
REVISION	
NOTE BOOK	
NO.	

NO.	TYPE	LOCATION	TOP ELEV.	REMARKS
E-27	Endwall - Type C	See Plan	353.75	Ho. Co. Std. Dwg. D-52 Pg. 10
E-28	B-15 Inlet	"	364.93	Ho. Co. Std. Dwg. G-9 Pg. 11
E-29	"S" Inlet	"	364.93	Ho. Co. Std. Dwg. D-36 Pg. 12

Traffic Note:
Traffic Control Devices, Marking & Signing
shall be installed in accordance with the
Manual of Uniform Traffic Control Devices.

PARK

DRAINAGE

UTILITIES

RESERVATION

DEPARTMENT OF PUBLIC WORKS
G. B. McLeod 12/1/75
CHIEF, BUREAU OF HIGHWAYS DATE

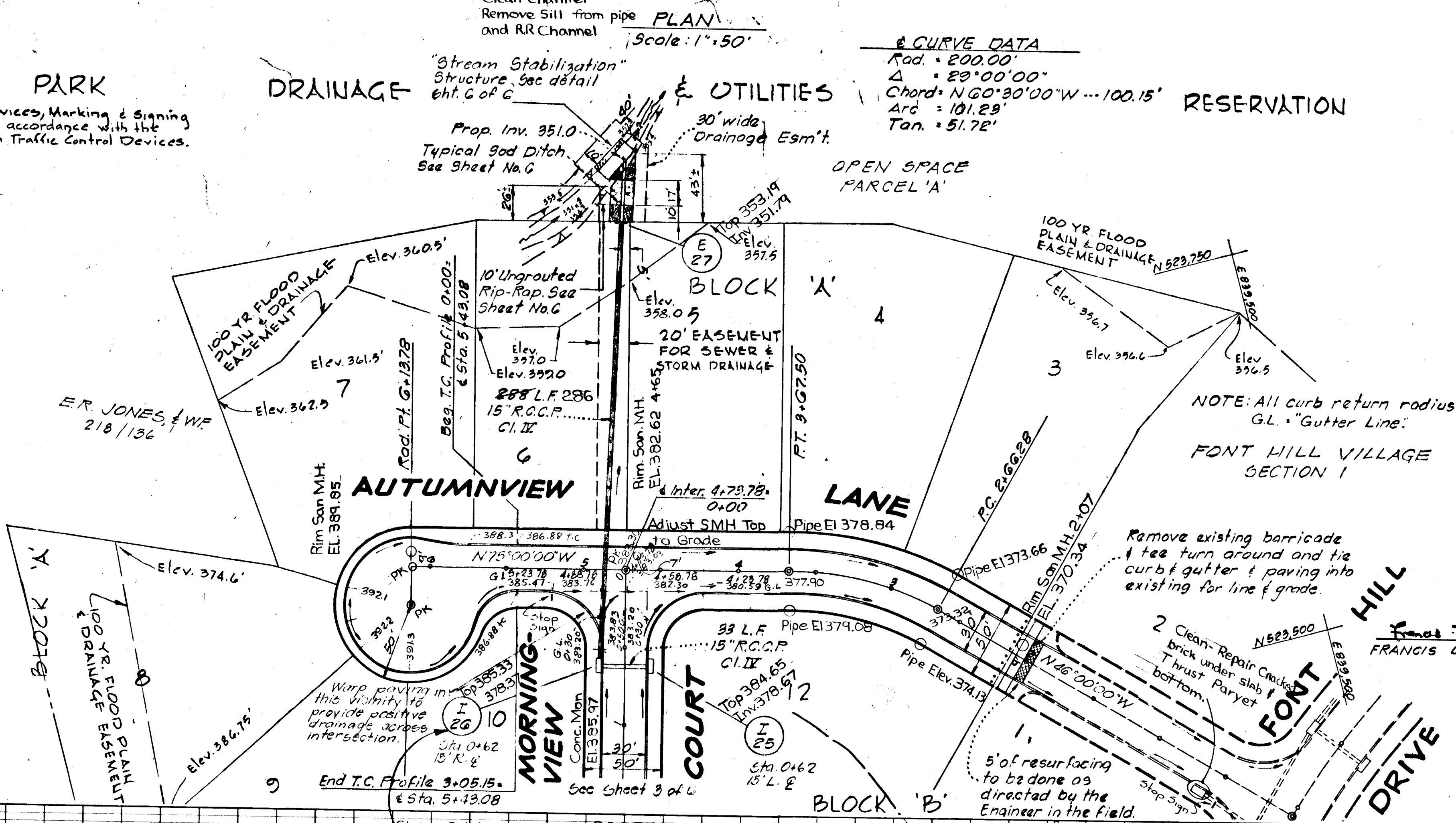
OFFICE OF PLANNING AND ZONING
J. H. Lawson 11/26/75
CHIEF, DIVISION OF LAND DEVELOPMENT DATE
AND TRANSPORTATION PLANNING

Rev. Date	Rev. No.	Profile	Revision Description
11-15-75	I	Profile	

RICHARD P. BROWNE ASSOCIATES
ENGINEERS SURVEYORS PLANNERS ARCHITECTS
PEACHTREE CITY, GEORGIA
COLUMBIA, MD. WAYNE, N. J.

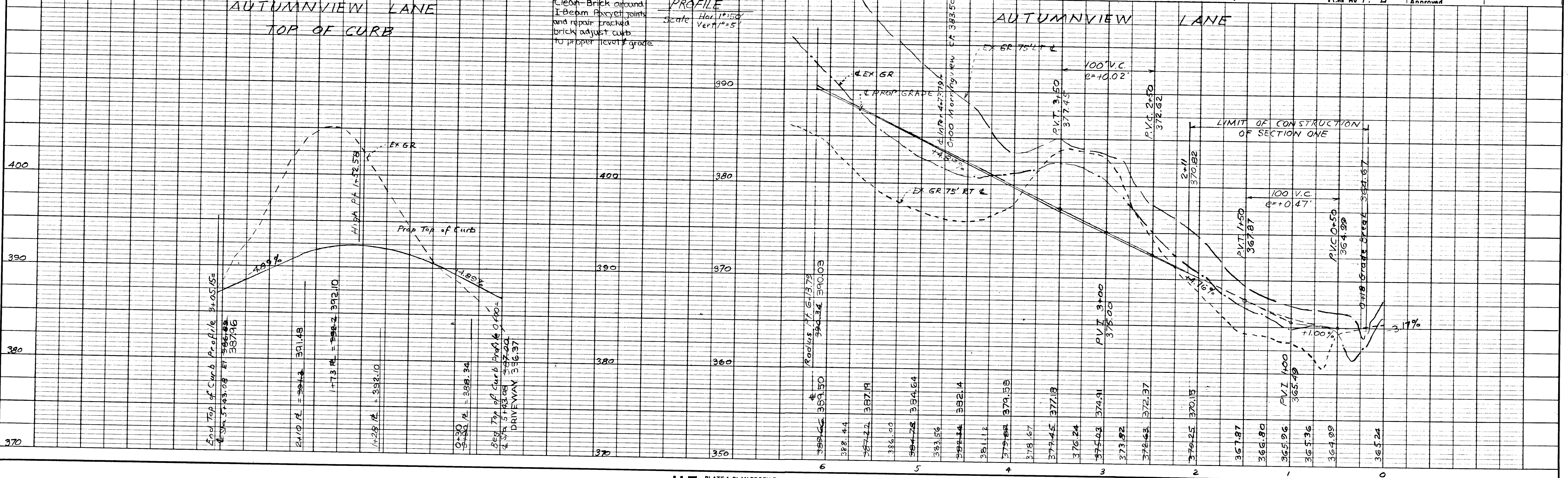
**PLAN & PROFILE
AUTUMNVIEW LANE**

Des. By M.L.C. Scale As Shown Dwg. No. 2 of 6
Dwn. By G.J.J. Date 10-13-72 Proj. No. 3348
Chk. By J. H. Approved



**AUTUMNVIEW LANE
TOP OF CURB**

PROFILE
Scale: Hor. 1"=50'
Vert. 1"=5'



DATE	
BY	
REVISION	
NOTE BOOK	
NO.	

DATE	
BY	
REVISION	
NOTE BOOK	
NO.	

CURVE DATA
 Rad. = 350.00'
 Δ = 37°00'00"
 Chord = 602.30'
 Arc = 613.48'
 Tan. = 319.72'
 317.87'

PLAN
 Scale: 1"=50'
 CHAS. H. SMITH
 28A/277

JOHN H. JOHNSON
 286/339

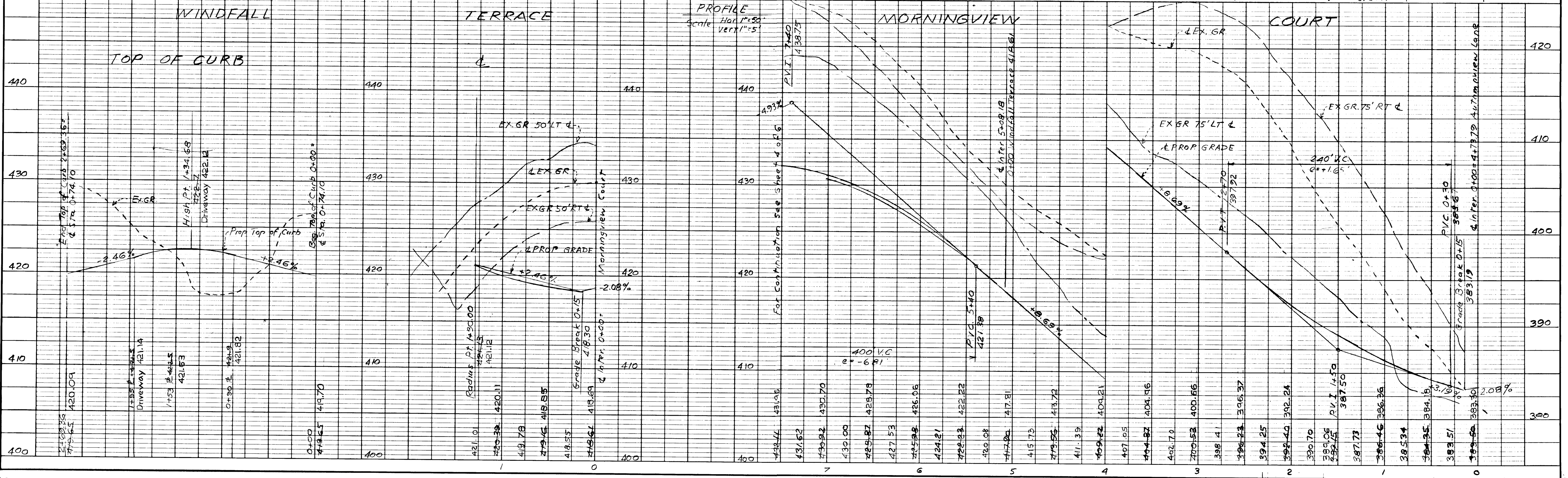
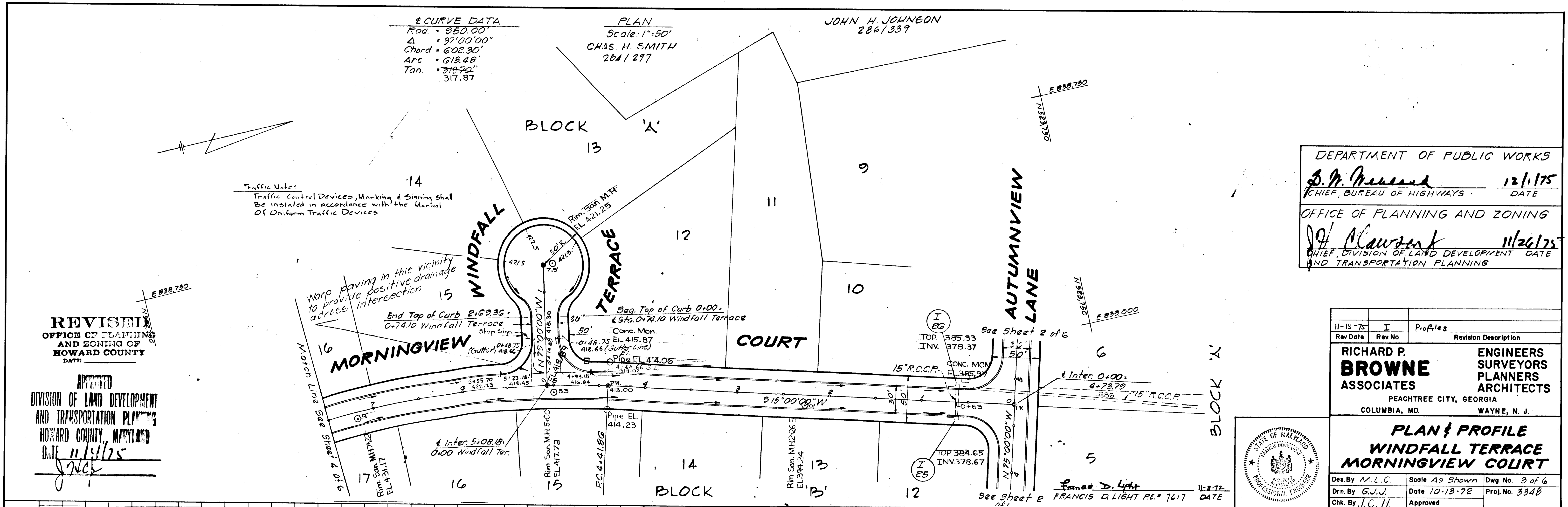
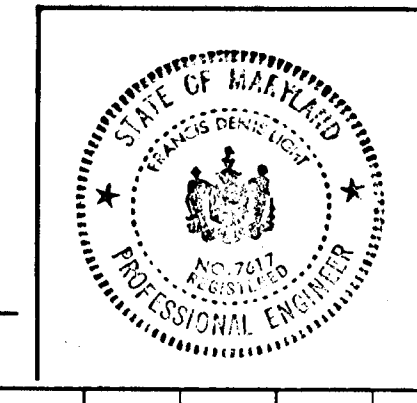
Traffic Note:
 Traffic Control Devices, Marking & Signing shall be installed in accordance with the Manual of Uniform Traffic Devices

REVISION
 OFFICE OF PLANNING AND ZONING OF HOWARD COUNTY
 DATE: 11/15/75

APPROVED
 DIVISION OF LAND DEVELOPMENT AND TRANSPORTATION PLANNING
 HOWARD COUNTY, MARYLAND
 DATE: 11/15/75

DEPARTMENT OF PUBLIC WORKS
S. P. Reed 12/1/75
 CHIEF, BUREAU OF HIGHWAYS DATE
 OFFICE OF PLANNING AND ZONING
J. H. Mawson 11/26/75
 CHIEF, DIVISION OF LAND DEVELOPMENT AND TRANSPORTATION PLANNING DATE

11-15-75	I	Profiles
Rev. Date	Rev. No.	Revision Description
		RICHARD P. BROWNE ASSOCIATES ENGINEERS SURVEYORS PLANNERS ARCHITECTS PEACHTREE CITY, GEORGIA COLUMBIA, MD. WAYNE, N. J.
PLAN & PROFILE WINDFALL TERRACE MORNINGVIEW COURT		
Des. By M.L.G.	Scale A3 Shown	Dwg. No. 3 of 6
Drn. By G.J.J.	Date 10-13-72	Proj. No. 3348
Chk. By J.C.H.	Approved	

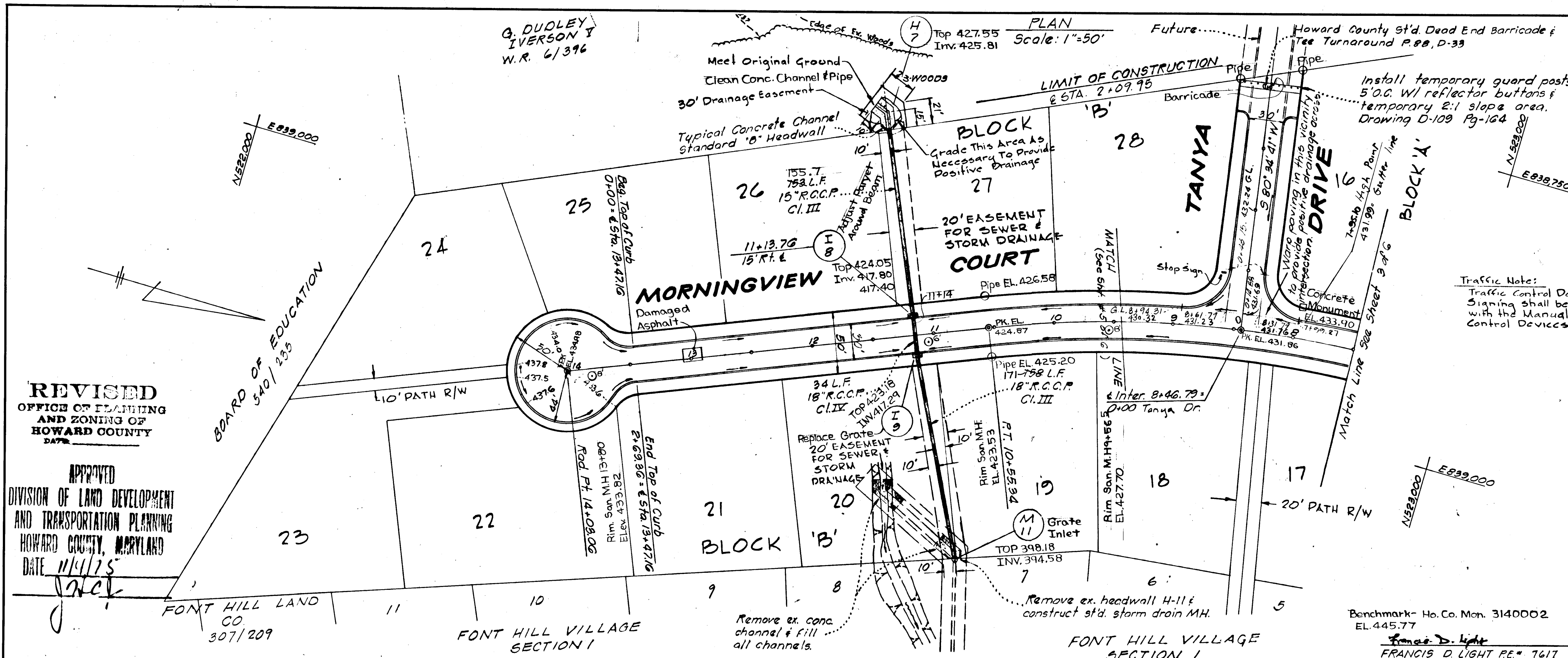


G. DUDLEY IVERSON
W.R. 6/396

PLAN
Scale: 1"=50'

STORM DRAINAGE STRUCTURE SCHEDULE

NO.	TYPE	LOCATION	TOP ELEV.	REMARKS
H-7	Small "B" Headwall	See Plan	429.75	Ho. Co. Std. Dwg. D-48 Pg. 109
I-8	"S" Comb Inlet	"	424.60	" " " " D-98 Pg. 153
I-9	"S" Inlet	"	424.60	" " " " D-49 Pg. 154
M-11	S.D. Manhole	"	399.75	" " " " D-109 Pg. 158



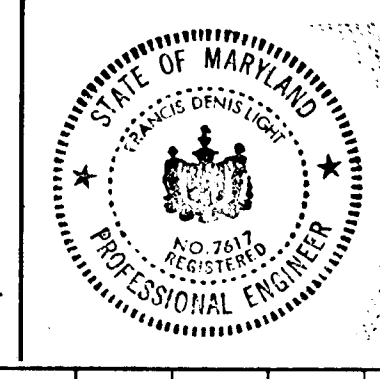
Traffic Note:
Traffic Control Devices, Marking & Signaling shall be installed in accordance with the Manual of Uniform Traffic Control Devices.

DEPARTMENT OF PUBLIC WORKS
G. W. Prosser 12/1/75
CHIEF, BUREAU OF HIGHWAYS DATE

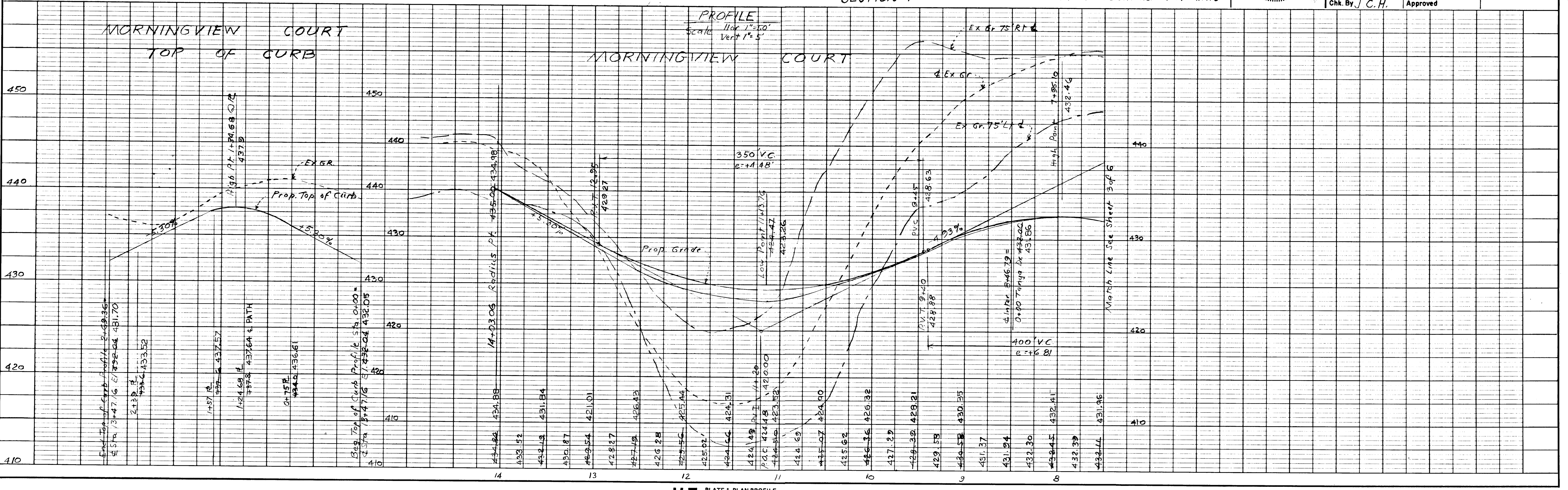
OFFICE OF PLANNING AND ZONING
J. H. Clauson 11/26/75
CHIEF, DIVISION OF LAND DEVELOPMENT DATE
AND TRANSPORTATION PLANNING

Rev. No.	Rev. Date	Revision Description
1	11-15-75	Profile
1	1-17-75	1. by W.N. Tanya profile removed, new on sat 5

RICHARD P. BROWNE ASSOCIATES
ENGINEERS SURVEYORS PLANNERS ARCHITECTS
PEACHTREE CITY, GEORGIA
COLUMBIA, MD. WAYNE, N. J.



PLAN & PROFILE
MORNINGVIEW COURT
Des. By M.L.C. Scale As Shown Dwg. No. 4 of 6
Dwn. By F.L.J. Date 10-13-72 Proj. No. 3348
Chk. By J.C.H. Approved



PLAN NOTE BOOK

DATE	BY	REVISION

PROFILE NOTE BOOK

DATE	BY	REVISION

REVISOR: [Blank]
NOTED: [Blank]
CHECKED: [Blank]
DATE: 11/1/75

APPROVED
DIVISION OF LAND DEVELOPMENT AND TRANSPORTATION PLANNING
HOWARD COUNTY, MARYLAND
DATE: 11/1/75

BOARD OF EDUCATION
540/233

FONT HILL LAND CO.
307/209

FONT HILL VILLAGE SECTION I

Benchmark - Ho. Co. Mon. 3140002
EL. 445.77

Francis D. Light 11-8-72
FRANCIS D. LIGHT P.E. #1617 DATE

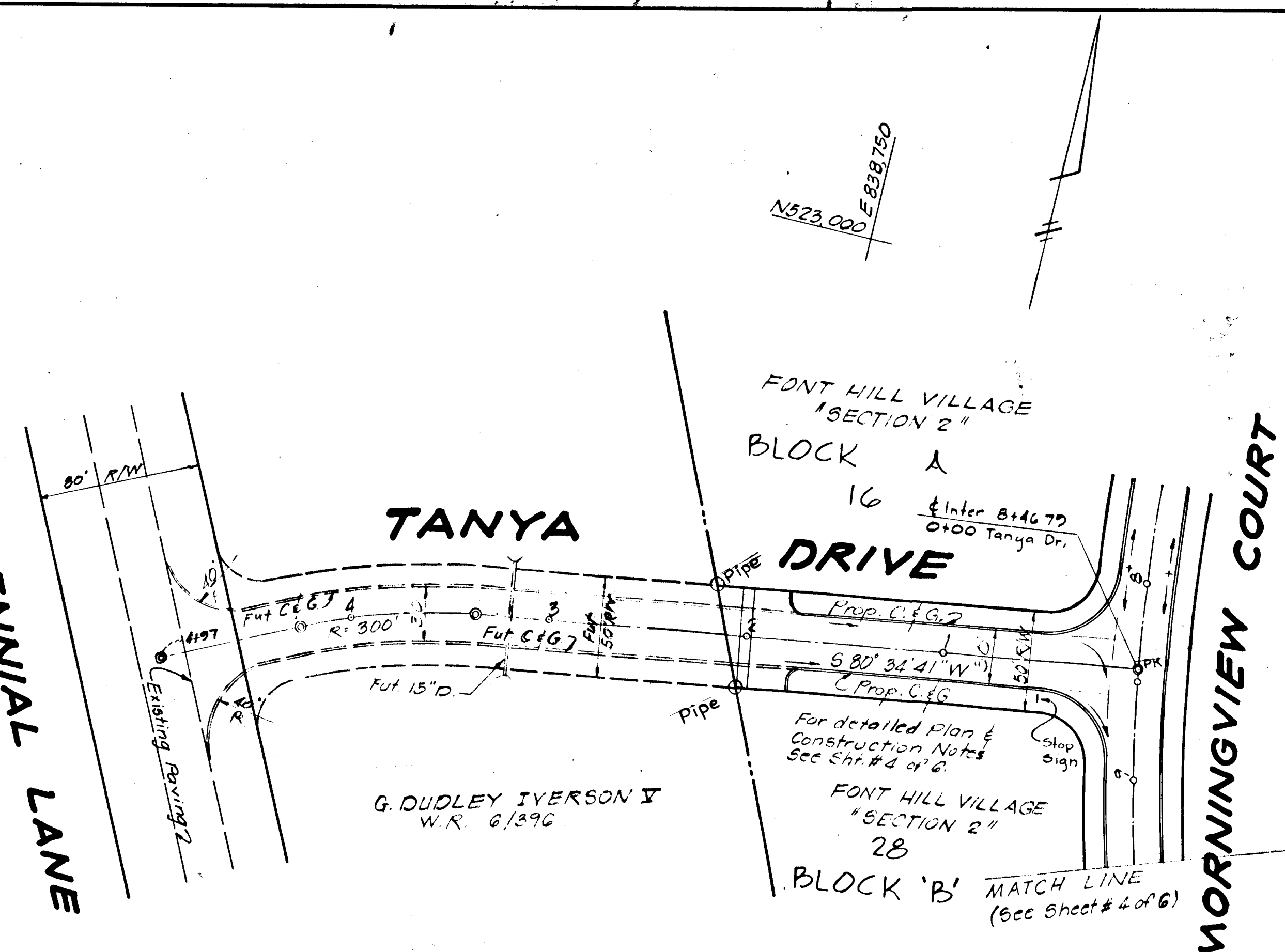
DATE	
BY	
REVISION	
NOTED	
ALIGNED CHECKED	
PLANNING CHECKED	
NO. 1	

DATE	
BY	
REVISION	
NOTED	
ALIGNED CHECKED	
PLANNING CHECKED	
NO. 1	

REVISED
OFFICE OF PLANNING
AND ZONING OF
HOWARD COUNTY
DATE

APPROVED
DIVISION OF LAND DEVELOPMENT
AND TRANSPORTATION PLANNING
HOWARD COUNTY, MARYLAND
D.L. 11/11/75
[Signature]

CENTENNIAL LANE



PLAN

SCALE: 1" = 50'

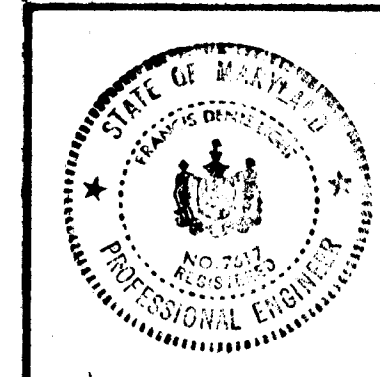
Traffic Note:
Traffic Control Devices, Marking & Signing
shall be installed in accordance with the
Manual of Uniform Traffic Control Devices.

Francis D. Light
FRANCIS D. LIGHT P.E. #7617 DATE

DEPARTMENT OF PUBLIC WORKS
D. H. Mahland 12/1/75
CHIEF BUREAU OF HIGHWAYS DATE

OFFICE OF PLANNING AND ZONING
J. H. Kausnik 11/26/75
CHIEF, DIVISION OF LAND DEVELOPMENT DATE
AND TRANSPORTATION PLANNING

11-15-75	I	Profiles
Rev Date	Rev No.	Revision Description
RICHARD P. BROWNE ASSOCIATES		ENGINEERS SURVEYORS PLANNERS ARCHITECTS
PEACHTREE CITY, GEORGIA		WAYNE, N. J.
PLAN & PROFILE		
TANYA DRIVE		
Des. By W.H.N.	Scale As Shown	Dwg. No. 5 of 6
Drn. By V.L.N.	Date 1-16-75	Proj. No. 3348
Chk. By J.C.H.	Approved	



PROFILE

SCALE: HOR 1" = 50'
VER 1" = 5'

