

VICINITY MAP
SCALE: 1"=2000'



GENERAL NOTES

1. TOTAL ACREAGE: 13.3 ACRES
2. TOTAL NO. LOTS: 22
3. ZONED: R-20
4. CONTOURS SHOWN ARE BY OTHERS
5. ALL BUILDING RESTRICTION LINES ARE 50' UNLESS OTHERWISE NOTED

PRELIMINARY PLAN

"AUTUMN HILL"

2ND ELECTION DISTRICT · HOWARD COUNTY, MARYLAND

SEPT. 24, 1962 SCALE: 1"=50'

OWNER AND DEVELOPER
SEBRING, INC.
LOVENTREE ROAD
ELLCOTT CITY, MARYLAND.

RECEIVED

OCT 9 1962

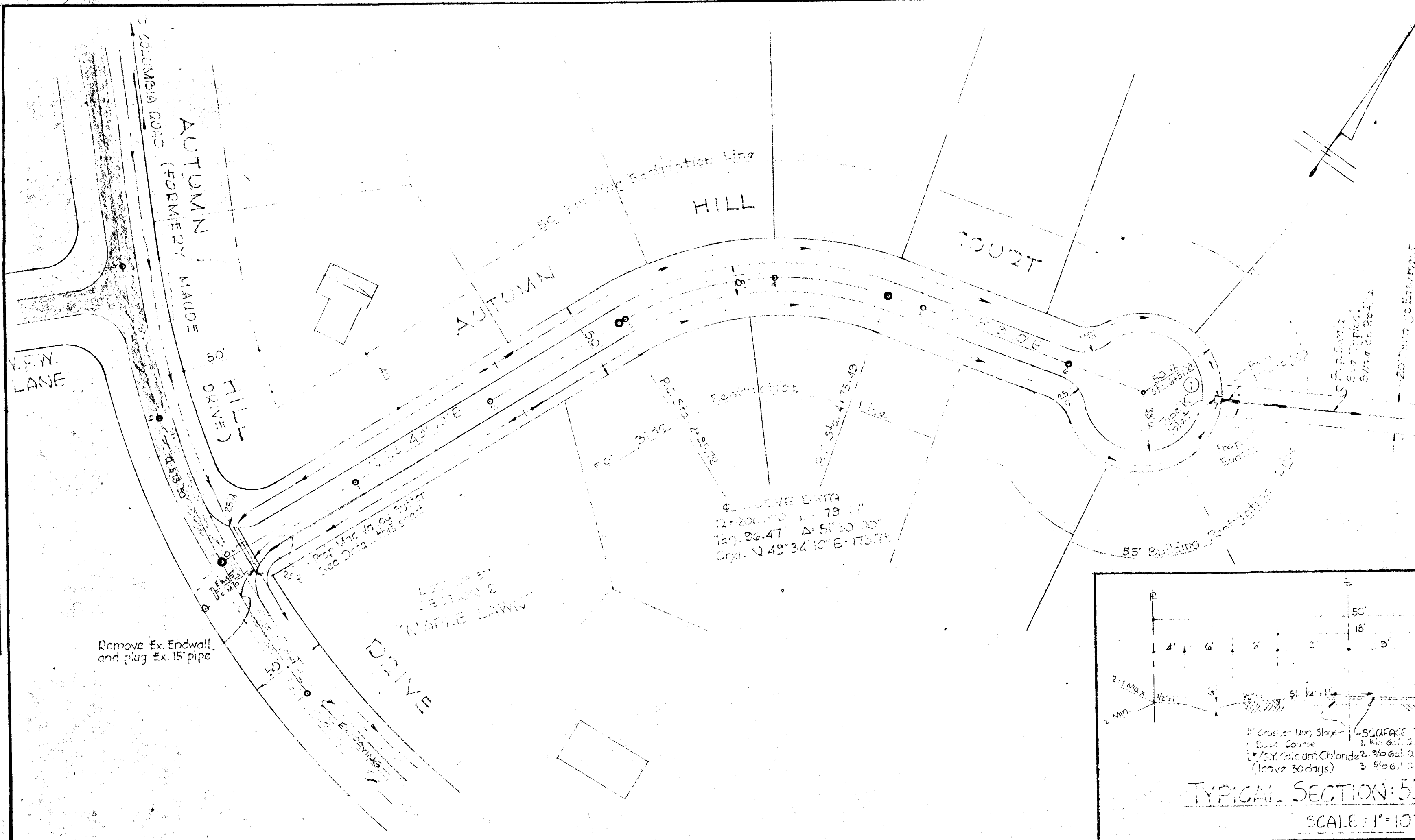
HOWARD COUNTY
PLANNING COMMISSION

RODOLPH W. JESCHKE
SURVEYOR AND LAND SURVEYOR
AVENUE 1511, MOUNTAIN VIEW, MARYLAND

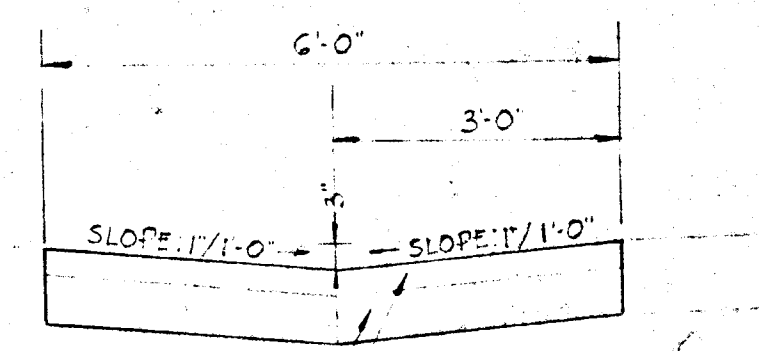
XXAU-62-001

PLAN
 SURVEYED
 NOTE BOOK ALIGNMENT CHECKED
 RT. OF WAY CHECKED
 NO.

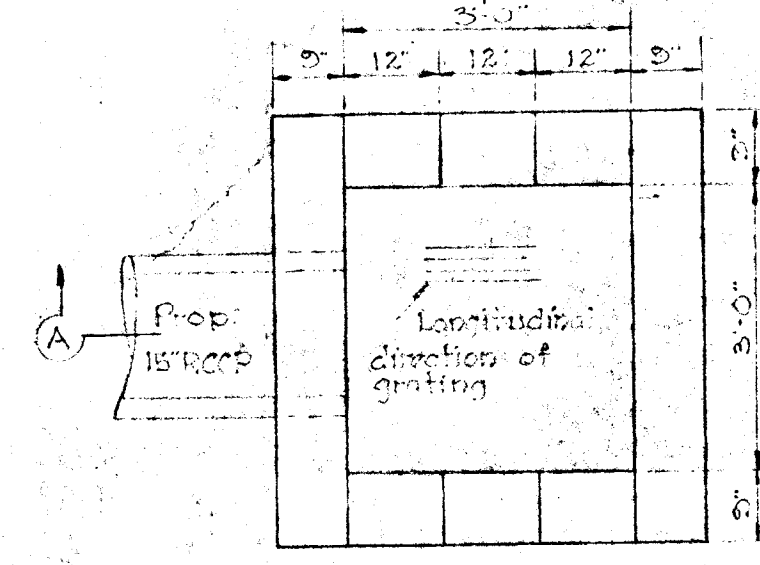
PROFILE
 SURVEYED
 NOTE BOOK GRADES CHECKED
 STRUCTURE NOT AT HIS PLACE
 NO.



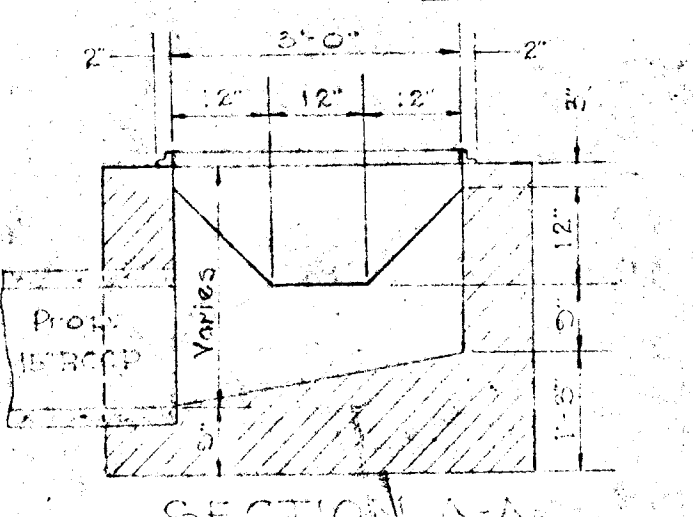
TYPE B ENDWALL
 SCALE: 1/2" = 1'-0"



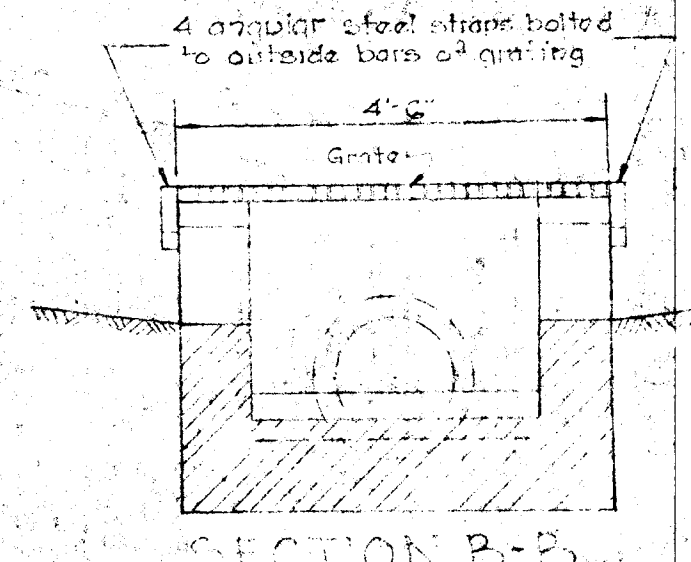
MACADAM VALLEY GUTTER
 SCALE: 1/2" = 1'-0"



PLAN

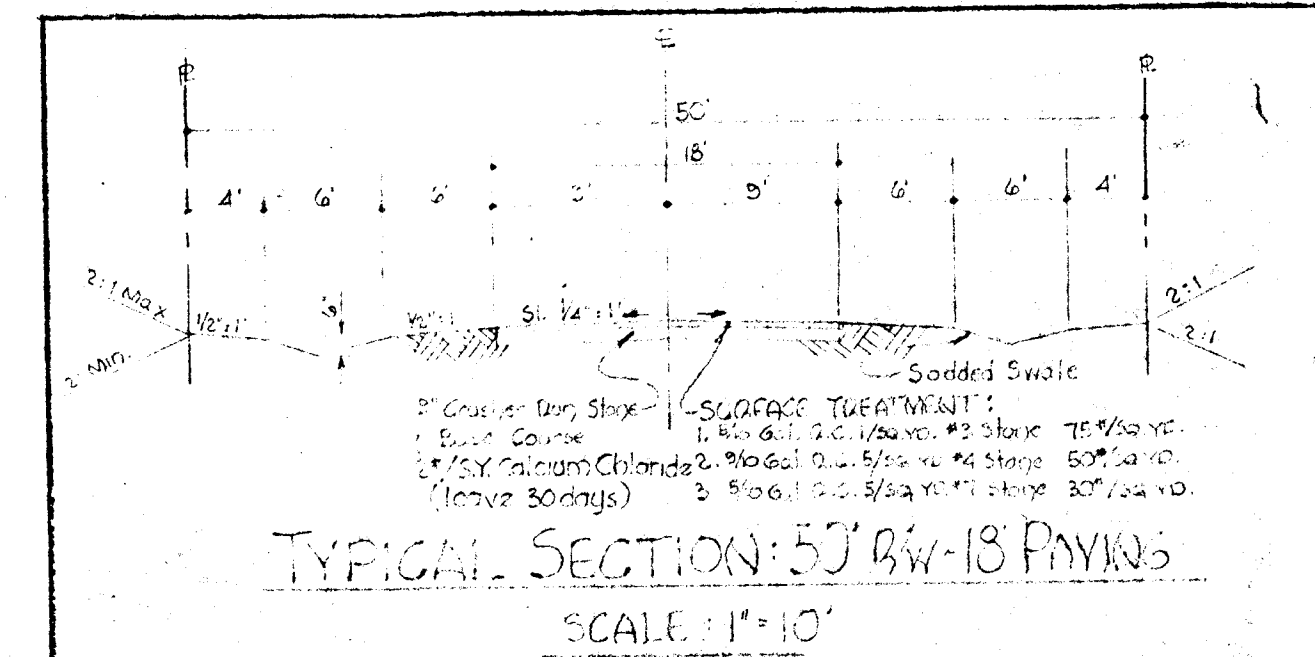


SECTION AA



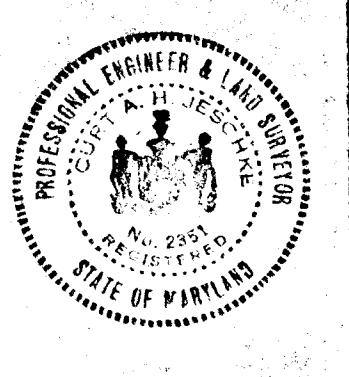
SECTION B-B

TYPE K INLET
 SCALE: 1/2" = 1'-0"



TYPICAL SECTION: 5' BY 18' PAVERS
 SCALE: 1/2" = 1'-0"

PURDUM
 AND
 JESCHKE
 ENGINEERS
 24 Park Avenue
 Emmitt City, Md.



AUTUMN HILL COURT
 SECTION TWO
 "AUTUMN HILL"
 2ND ELECTION DISTRICT - HOWARD COUNTY, MD.
 NOVEMBER 26, 1962
 Additions: JANUARY 21, 1963
 SCALE: 1/2" = 1'-0"

RECEIVED
 JAN 29, 1963
 HOWARD COUNTY
 PLANNING COMMISSION

