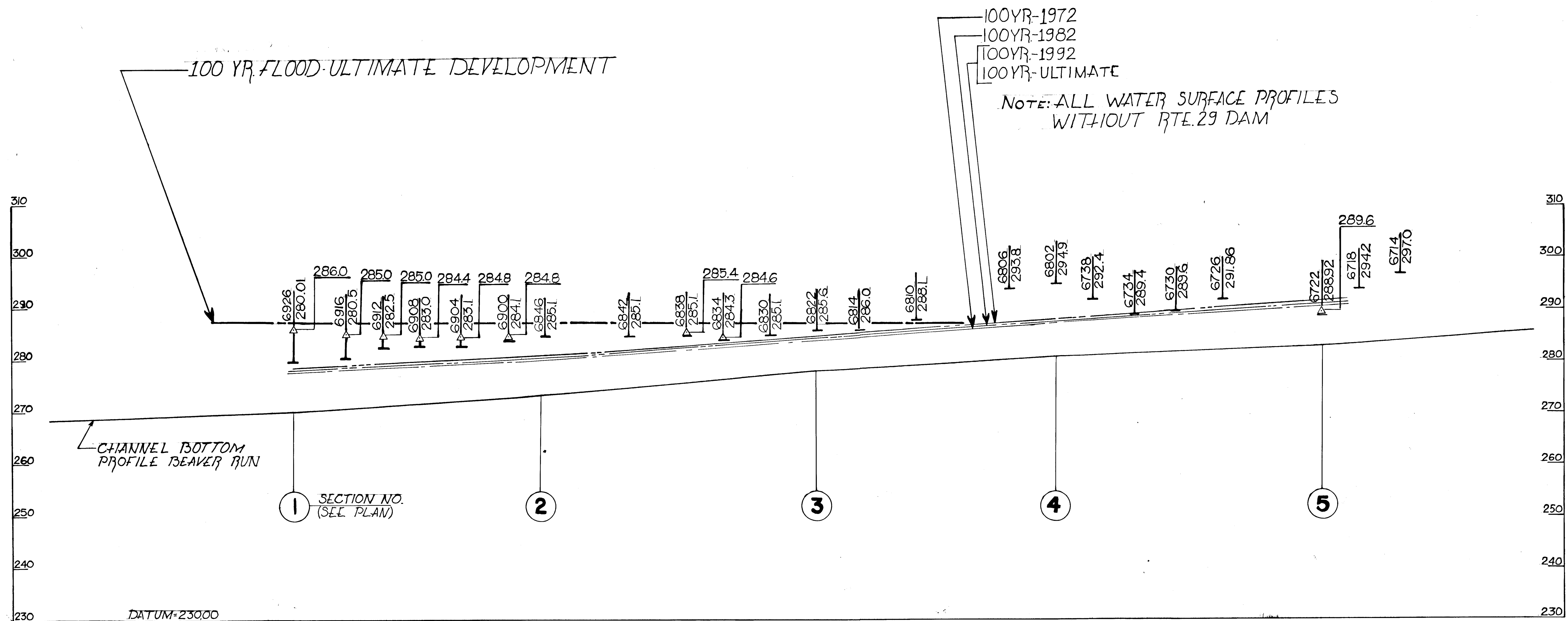


PLAT OF
 PROPOSED EASEMENT FOR CONCRETE
 WALKWAY FROM ALLVIEW ESTATES TO ATHOLTON
 ELEMENTARY SCHOOL IN DONLEIGH SCALE 1"=100'
 APRIL 1964 HOWARD COUNTY ROAD DEPARTMENT

#200

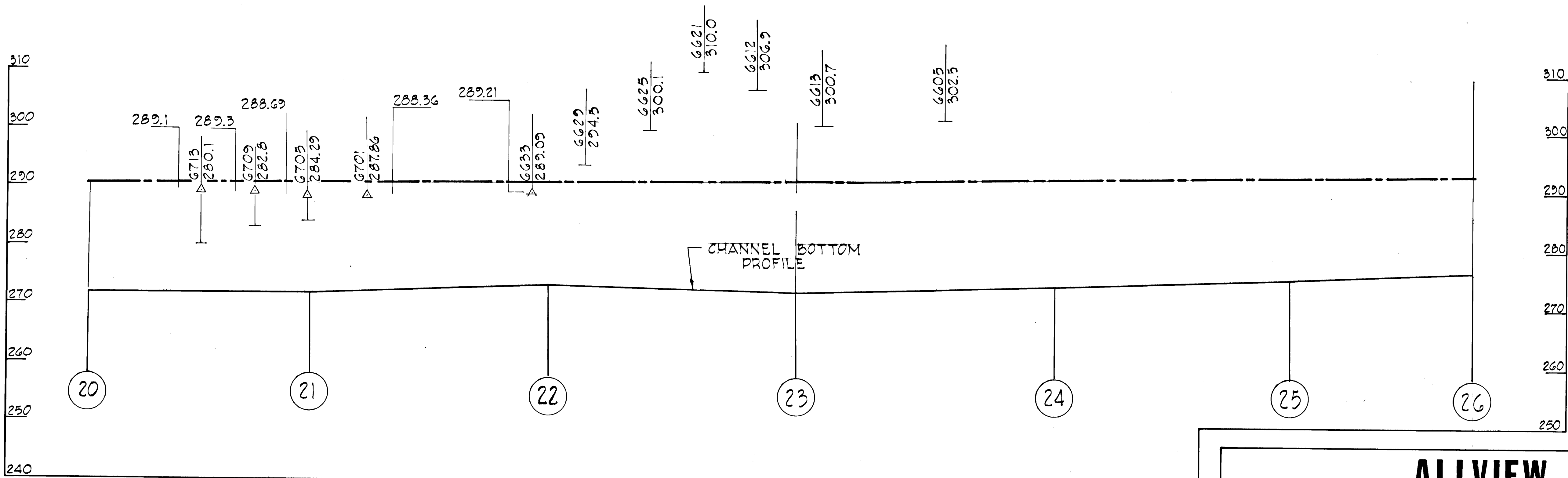
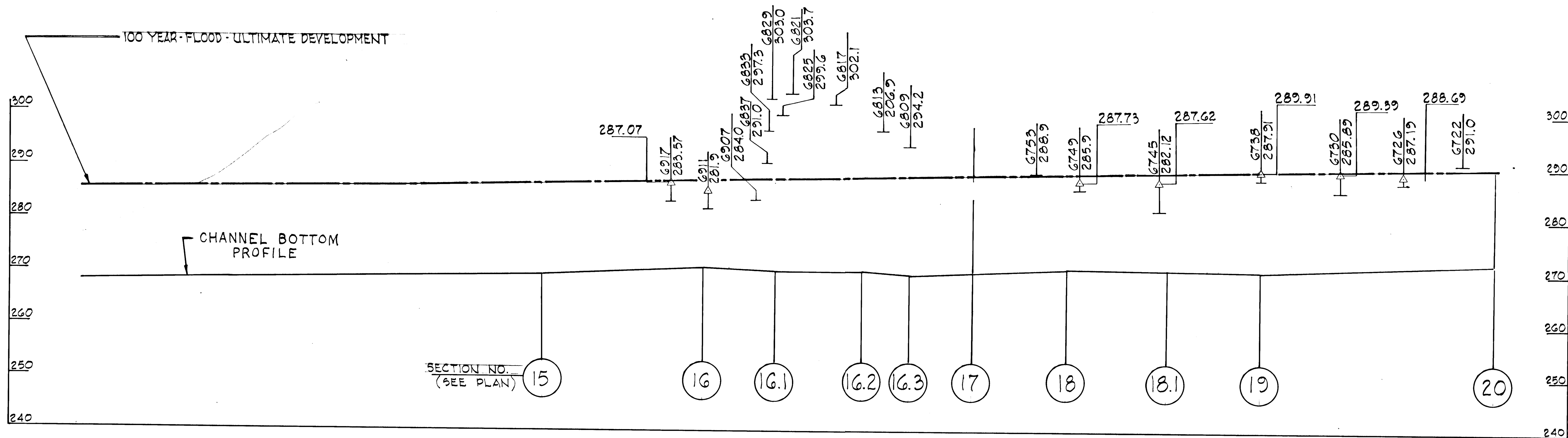


LEGEND

HOUSE NO.
CELLAR ELEV.

RECORDED
HIGH WATER MARK
AGNES (JUNE, 1972)

**ALLVIEW
INTERIM FLOOD PLAIN STUDY
BEAVER RUN CREEK**

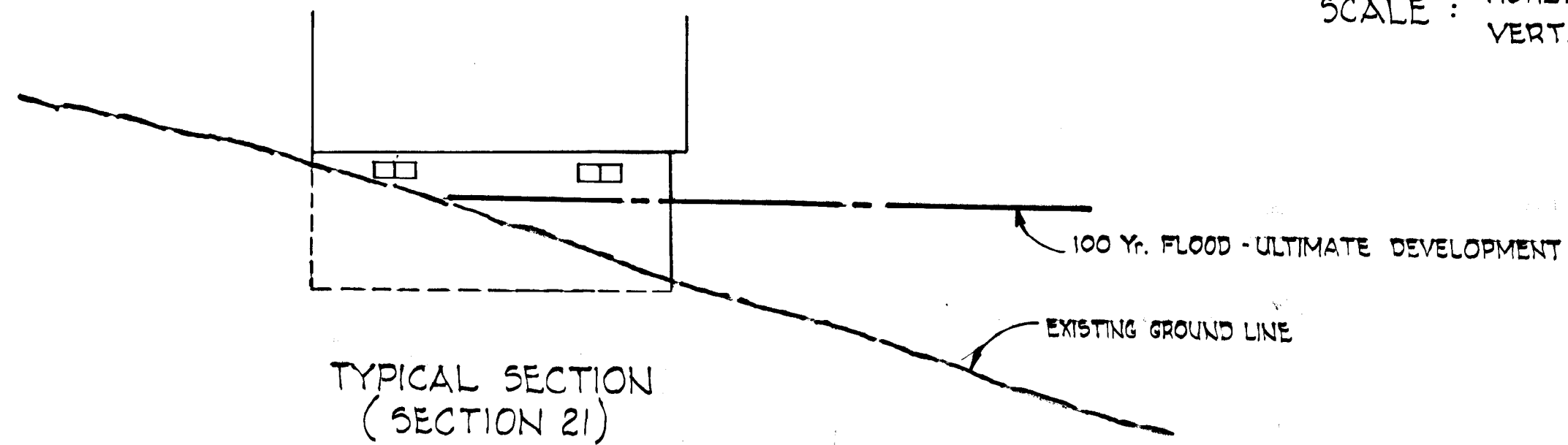


LEGEND

HOUSE NO. CELLAR ELEV.

RECORDED HIGH WATER MARK AGNES (JUNE, 1972)

SCALE : HORZ. 1" = 200'
VERT. 1" = 10'



**ALLVIEW
INTERIM FLOOD PLAIN STUDY
LITTLE PATUXENT RIVER**