

HO-1157
Engle-Hartsock-Knill Farm
1181 Morgan Station Road
Private

Capsule Summary

Description:

The Engle-Hartsock-Knill Farm has a drive that runs east from the road to the center of the parcel, where it widens to create a courtyard, with most of the buildings arranged approximately in a circle around this courtyard. The house faces north on the south side of the drive, just west of the courtyard, and is a two-story, three-bay by two-bay frame structure with a two-story, two-bay by two-bay ell on the south. It has a rubble stone foundation, aluminum siding, and a gable roof with new standing-seam metal. The main block ridge runs east-west and the ell ridge runs north-south. The north elevation of the main block has a center entrance on the first story with a one-bay porch. The west elevation of the main block, on the first story, has a door with four lights over two panels to the south and the ell has a door with four lights over two panels to the north, creating paired doors in the center of the whole façade. There is a one-story porch across all four bays. The first story of the main block has a lobby-entry plan, with an enclosed straight run of stairs ascending to the south from the lobby. The ell is a single room, with an enclosed porch to the east of it. The house has been re-oriented on the interior to read as a hall-parlor plan that faces west toward the road. The east room of the main block is a modern kitchen. The wash house is located about 40 feet southeast of the house. About 40 feet northeast of the house, at the northwestern edge of the courtyard, is an old garage. The wagon shed is located at the northern side of the courtyard, about 100 feet northeast of the house. It is a one-story, three-bay by one-bay frame structure set on concrete piers, with a crib in the center and sheds to each side. The crib has a heavy-timber square-rule frame that is mortised and tenoned and pinned.

Significance:

William M. Engle was a young harness-maker living with his mother and sister in Lisbon in 1880. Two years later he purchased 11 acres for only \$190, and shortly after he was assessed for a house, valued at \$250. Then, in 1884 Engle promptly sold his two tracts and new house, to John A. Warfield. In 1890 Warfield sold the farm to David T. Barnes, who kept the farm until 1908. Frank and Anna Hartsock purchased the farm from the Barneses for \$2,800, but within five years were in financial trouble and were forced to sell, though for a substantial increase of \$3,250. The farm was purchased by Caleb and Emma Hackett, and their family would continue to own it for many years. After Caleb's death, Emma continued to manage the farm until she sold it in 1925 to her daughter, Viola Knill. Viola and her husband, Keefer, operated a poultry farm. The house started as a lobby-entry, two-room plan, the main block of the house, with the orientation facing to the north, and was built c. 1882-84. The ell was added later, probably c. 1895-1915, and at this time the house was reoriented to face west, toward Morgan Station Road.

Maryland Historical Trust Maryland Inventory of Historic Properties Form

Inventory No. HO-1157

1. Name of Property (indicate preferred name)

historic Engle-Hartsock-Knill Farm

other _____

2. Location

street and number 1181 Morgan Station Road not for publication

city, town Lisbon vicinity

county Howard

3. Owner of Property (give names and mailing addresses of all owners)

name Steven Harbin & Tiana Coll

street and number 1181 Morgan Station Road telephone _____

city, town Woodbine state MD zip code 21797

4. Location of Legal Description

courthouse, registry of deeds, etc. Howard County Courthouse liber 13748 folio 87

city, town Ellicott City tax map 8 tax parcel 9 tax ID number _____

5. Primary Location of Additional Data

- Contributing Resource in National Register District
 Contributing Resource in Local Historic District
 Determined Eligible for the National Register/Maryland Register
 Determined Ineligible for the National Register/Maryland Register
 Recorded by HABS/HAER
 Historic Structure Report or Research Report at MHT
 Other: _____

6. Classification

Category	Ownership	Current Function		Resource Count	
				Contributing	Noncontributing
<input type="checkbox"/> district	<input type="checkbox"/> public	<input type="checkbox"/> agriculture	<input type="checkbox"/> landscape	<u>4</u>	<u>4</u> buildings
<input checked="" type="checkbox"/> building(s)	<input checked="" type="checkbox"/> private	<input type="checkbox"/> commerce/trade	<input type="checkbox"/> recreation/culture	<u>0</u>	<u>0</u> sites
<input type="checkbox"/> structure	<input type="checkbox"/> both	<input type="checkbox"/> defense	<input type="checkbox"/> religion	<u>0</u>	<u>0</u> structures
<input type="checkbox"/> site		<input checked="" type="checkbox"/> domestic	<input type="checkbox"/> social	<u>0</u>	<u>0</u> objects
<input type="checkbox"/> object		<input type="checkbox"/> education	<input type="checkbox"/> transportation	<u>4</u>	<u>4</u> Total
		<input type="checkbox"/> funerary	<input type="checkbox"/> work in progress		
		<input type="checkbox"/> government	<input type="checkbox"/> unknown		
		<input type="checkbox"/> health care	<input type="checkbox"/> vacant/not in use		
		<input type="checkbox"/> industry	<input type="checkbox"/> other:		
				Number of Contributing Resources previously listed in the Inventory <u>0</u>	

7. Description

Inventory No. HO-1157

Condition

excellent deteriorated
 good ruins
 fair altered

Prepare both a one paragraph summary and a comprehensive description of the resource and its various elements as it exists today.

Summary:

The Engle-Hartsock-Knill Farm has a drive that runs east from the road to the center of the parcel, where it widens to create a courtyard, with most of the buildings arranged approximately in a circle around this courtyard. The house faces north on the south side of the drive, just west of the courtyard, and is a two-story, three-bay by two-bay frame structure with a two-story, two-bay by two-bay ell on the south. It has a rubble stone foundation, aluminum siding, and a gable roof with new standing-seam metal. The main block ridge runs east-west and the ell ridge runs north-south. The north elevation of the main block has a center entrance on the first story with a one-bay porch. The west elevation of the main block, on the first story, has a door with four lights over two panels to the south and the ell has a door with four lights over two panels to the north, creating paired doors in the center of the whole façade. There is a one-story porch across all four bays. The first story of the main block has a lobby-entry plan, with an enclosed straight run of stairs ascending to the south from the lobby. The ell is a single room, with an enclosed porch to the east of it. The house has been re-oriented on the interior to read as a hall-parlor plan that faces west toward the road. The east room of the main block is a modern kitchen. The wash house is located about 40 feet southeast of the house. About 40 feet northeast of the house, at the northwestern edge of the courtyard, is an old garage. The wagon shed is located at the northern side of the courtyard, about 100 feet northeast of the house. It is a one-story, three-bay by one-bay frame structure set on concrete piers, with a crib in the center and sheds to each side. The crib has a heavy-timber square-rule frame that is mortised and tenoned and pinned.

Description:

The Engle-Hartsock-Knill Farm is located at 1181 Morgan Station Road, on a fairly level lot on the east side of Morgan Station Road and just north of Interstate 70. There is a drive that runs east from the road to the center of the parcel, where it widens to create a courtyard, with most of the buildings arranged approximately in a circle around this courtyard.

House, exterior

The house faces north on the south side of the drive, just west of the courtyard, and is a two-story, three-bay by two-bay frame structure with a two-story, two-bay by two-bay ell on the south. It has a rubble stone foundation, aluminum siding, and a gable roof with new standing-seam metal. The main block ridge runs east-west and the ell ridge runs north-south.

The north elevation of the main block has a center entrance on the first story that contains a new door. There is a one-bay porch with a concrete deck, new columns, and a hip roof. On either side of the doorway is a new one-over-one sash with fake blinds, which is typical for the house. The second story has a typical one-over-one sash in the end bays and no opening in the center. There is a new metal

Maryland Historical Trust

Maryland Inventory of Historic Properties Form

Inventory No. HO-1157

Name
Continuation Sheet

Number 7 Page 1

chimney top on the east gable end. The eaves are covered with aluminum and follow the pitch of the rafters.

The west elevation of the main block, on the first story, has a typical one-over-one sash to the north and a door with four lights over two panels to the south. The second story has two typical one-over-one sash, and there is a vent cut into the siding in the gable end. The west elevation of the ell has a door with four lights over two panels to the north and a typical one-over-one sash to the south. There is a one-story porch across all four bays, with a CMU foundation, a concrete deck, new columns, and a hip roof with standing-seam metal.

The south elevation of the ell has two typical one-over-one sash on both the first and second stories, and no opening in the gable end. The south elevation of the main block is covered by the enclosed porch on the first story and has a typical one-over-one sash on the second.

The east elevation of the ell has an enclosed porch that is not historic on the first story. The second story has a typical one-over-one sash in the center, with a new, small one-over-one sash to the north. The main block, on the first story, has a typical one-over-one sash in the south bay. The second story and gable end have no openings.

House, interior

The first story of the main block has a lobby-entry plan, with an enclosed straight run of stairs ascending to the south from the lobby. The ell is a single room, with an enclosed porch to the east of it. The house has been re-oriented on the interior to read as a hall-parlor plan that faces west toward the road.

The lobby has an original two-light transom that has a wide center muntin and is mortised and tenoned and pinned at the corners. The flooring is continuous from the east and west rooms. The enclosed stair ascends to the south. The doorway architrave is plain and mitered, with a quirked bead on the inner edge, and the interior doors are missing.

The east room of the main block is a modern kitchen with linoleum on the floor and bead-board half wainscot. There is a stove chimney on the east wall, with a covered-up hole in the ceiling for a grate. The architrave is plain and mitered, with a quirked bead on the inner edge. The south elevation has a door set to the east that has four lights over two panels, with sunken fields and cavetto-and-ovolo panel moulds. The architrave here is plain and head-cut, with a quirked bead on the inner edge. This leads to the enclosed porch. On the same wall and set to the west is a doorway leading to the ell. The west wall has a doorway set to the south that leads to a closet under the stairs; the door is missing. In the floor is a trap door.

Maryland Historical Trust

Maryland Inventory of Historic Properties Form

Inventory No. HO-1157

Name
Continuation Sheet

Number 7 Page 2

The enclosed porch has paneling, ceiling tiles, and linoleum.

The west room of the main block has random-width tongue-and-grooved pine flooring that runs east-west, is 3 ¼ – 5 ¾ inches wide, and is face-nailed with cut nails. The center of the floor has a patch for a furnace grate. The room has new baseboard, mostly new architrave, new crown moulding, and new sash. The owner believes the walls of this room may be log, but there is no evidence visible to either confirm or refute this at this time. The west door has four lights over two panels, with plain mitered trim that has a bead on the inner edge. The door panels are sunken double fields, and there is a plain cast iron rim lock with mineral knobs. On the east elevation, set to the north, is a doorway to the lobby, with the same architrave as the west door; the door itself is missing. On the south are double doors with new doors and trim, but the wide opening is old.

The ell room has 3 ½-inch tongue-and-grooved pine flooring that runs north-south and is blind-nailed. The baseboard, trim, crown moulding and sash are all new. There is an exterior door on the west that has symmetrical architrave with a raised field in the center and a small quirked ogee to each side. There are corner blocks that have a drill hole in the center and a shallow circular groove cut around it. The door has four lights over two panels, and the panels are sunken double fields. There is a plain cast iron rim lock with mineral knobs, and butt hinges with three knuckles and pins. On the south wall is a stove chimney with built-in cupboards on both sides of the chimney that are 6 feet tall. The cupboards have plain mitered architrave with a small quirked bead on the inner edge; the doors are missing. The chimney is now faced with stone and has a stove pipe thimble. There is a doorway on the east that has been closed off, and a doorway on the north, set to the east, that is missing its door.

The cellar was originally just a crawl space and has rubble stone walls at the top, with CMU walls inside and at the bottom. The floor is dirt. The access is from the east end of the main block. There are ¾-round log joists that run north-south. The flooring has saw marks that appear to have a slight curve to them. There is a stairway under the trap door, and it is constructed with wire nails; a log joist is cut out here. The cellar extends under the ell room, with the same CMU walls that are contiguous and were clearly done at the same time as those under the main block. This space was also originally just a crawl space. The ell joists are circular-sawn, are mostly 2 inches wide (one is 1-½ inches) and are 10 inches deep. They are spaced 24 inches on centers and run east-west.

The second story has a vestibule at the top of the stairs, with chambers to the east and west, and a vestibule to the south in the ell, with chambers to the west, south, and east in the ell.

The east chamber has plain baseboard and plain, mitered architrave with a quirked bead on the inner edge. It has a four-panel door with sunken double fields, a plain cast iron rim lock with black metal knobs, and butt hinges with three knuckles and pins. There is a closet door on the west, set to the north

Maryland Historical Trust

Maryland Inventory of Historic Properties Form

Inventory No. HO-1157

Name
Continuation Sheet

Number 7 Page 3

over top of the lobby. The walls here have circular-sawn lath with cut nails, and there is a hatch to the attic. On the east wall is a stove chimney, with no evidence of there ever having been a fireplace.

The west chamber also has plain baseboard and plain, mitered architrave with a quirked bead on the inner edge. It has a four-panel door with sunken double fields, a plain cast iron rim lock with mineral knobs, and butt hinges with three knuckles and pins. A closet was added to the northwest corner but has since been removed. The flooring is random-width tongue-and-grooved pine that is 3 – 5 inches wide and runs east-west.

The ell vestibule has 3 ½-inch tongue-and-grooved pine flooring that runs north-south and is raised about 1 inch above the floor level in the main block. The architrave on the west chamber, east chamber and stairway doorways is head-cut, with a small quirked bead on the bottom of the top board that runs the whole length of the board rather than being mitered where it meets the inner beads of the side pieces. The center chamber doorway architrave is miter-cut, with a small quirked bead on the inner edge. This door has four panels with sunken double fields, butt hinges with three knuckles and pins, and a cast iron rim lock with porcelain knobs. The door appears to be painted brown and varnished, as though it was grained originally, and the vestibule architrave appears to have the same finish.

The ell south chamber flooring continues from the vestibule. The window architrave is mitered, while the door architrave is head-cut, with a small quirked bead on the bottom of the top board that runs the whole length of the board.

The ell east chamber door has four panels with sunken single fields. There is a plain cast iron rim lock with metal knobs and butt hinges with three knuckles and pins. The west wall has bead-board underneath wallpaper. This chamber is a bathroom with a claw-foot tub.

The attic rafters in the main block have been replaced, probably when the ell was added, and are circular-sawn and mitered and butted at the ridge. They are 2 ¾ inches wide and 3 ¾ inches deep, and support shingle lath.

Wash House

The wash house is located about 40 feet southeast of the house. It is a one-story, one-bay-square frame structure with a CMU foundation, vinyl German siding, and a gable roof with inverted-v-seam metal and an east-west ridge. The west elevation has a vertical-board door on butterfly hinges and a new octagonal window above. The north and south elevations each have a new one-over-one sash, and the east elevation has no opening. The interior has a concrete floor. It is built with 4 by 4 corner posts and 4 by 4 girts lapped on top of them, with no studs in the walls, just a horizontal nailer for vertical-board siding.

Maryland Historical Trust

Maryland Inventory of Historic Properties Form

Inventory No. HO-1157

Name
Continuation Sheet

Number 7 Page 4

The rafters are 2 by 4s that are mitered and butted at the ridge, with shingle lath. The walls, posts, and girts are whitewashed and no nails are clearly visible.

Garage

About 40 feet northeast of the house, at the northwestern edge of the courtyard, is an old garage. It is aligned to face the house to the southwest, not the other buildings around the courtyard. It is a one-story, one-bay by one-bay structure with a concrete foundation, vinyl German siding, and a gable roof with inverted-v-seam metal and a ridge that runs northeast-southwest. There is a one-bay, shed-roofed addition on the southeast. The southwest elevation has a pair of T1-11 doors hung on new strap hinges. The northwest elevation has a new one-over-one sash and the northeast elevation has no opening. It has a dirt floor and 2 by 4 construction in the walls and roof.

Wagon Shed/Corn Crib

The wagon shed is located at the northern side of the courtyard, about 100 feet northeast of the house and between the new garage and the tractor shed. It is a one-story, three-bay by one-bay frame structure set on concrete piers that run north-south under all four of the north-south walls. There is inverted-v-seam metal over top of vertical-board siding, and the gable roof has inverted-v-seam metal with a north-south ridge. The south elevation has a vertical-board door in the center, hung on butterfly hinges. To the west is a wide opening and to the east is siding with no opening. There are no openings on the west and north elevations, and the east elevation is completely open, with no siding.

There is a crib in the center with sheds to each side. The crib has vertical slats that are wire-nailed. The west shed is constructed mostly of 2 by 4s, with a hewn sill and 2 by 4 rafters that are mitered and butted at the ridge. The crib has a heavy-timber square-rule frame that is mortised and tenoned and pinned. It has some hewn posts, many partly in the round, and has a dropped girt as well as a lower girt. The horizontal nailers that stiffen the slats are circular-sawn and wire-nailed. The north wall has been rebuilt on the interior. The doorway has angled pieces nailed to each jamb with wire nails, apparently to take wood louver slats. They are circular-sawn and not painted, and the slats appear to have been loose so that they could be removed. The east shed has circular-sawn rafters and the walls are mostly rebuilt. It appears that the sheds were added to a free-standing corn crib.

Chicken House

The chicken house is located at the south side of the courtyard, between the new barn and the rebuilt bank barn. It was moved from a location to the west, according to the owners. It is a one-story, one-bay-square frame structure that is set on CMUs and has inverted-V-seam metal siding and roofing. The shed roof slopes down to the south. On the north elevation is a door of T1-11 wood, and there are no openings on the other elevations. It is of 2 by 4 construction with wire nails.

Maryland Historical Trust Maryland Inventory of Historic Properties Form

Inventory No. HO-1157

Name
Continuation Sheet

Number 7 Page 5

Also on the property are several non-historic structures, including a modern gambrel-roofed garage, a three-bay tractor shed, A bank barn at the east end of the courtyard that has recently been rebuilt on the old foundation, a new barn at the southwest end of the courtyard, and a small log building south of the wash house.

8. Significance

Inventory No. HO-1157

Period	Areas of Significance	Check and justify below		
<input type="checkbox"/> 1600-1699	<input checked="" type="checkbox"/> agriculture	<input type="checkbox"/> economics	<input type="checkbox"/> health/medicine	<input type="checkbox"/> performing arts
<input type="checkbox"/> 1700-1799	<input type="checkbox"/> archeology	<input type="checkbox"/> education	<input type="checkbox"/> industry	<input type="checkbox"/> philosophy
<input checked="" type="checkbox"/> 1800-1899	<input checked="" type="checkbox"/> architecture	<input type="checkbox"/> engineering	<input type="checkbox"/> invention	<input type="checkbox"/> politics/government
<input checked="" type="checkbox"/> 1900-1999	<input type="checkbox"/> art	<input type="checkbox"/> entertainment/ recreation	<input type="checkbox"/> landscape architecture	<input type="checkbox"/> religion
<input type="checkbox"/> 2000-	<input type="checkbox"/> commerce	<input type="checkbox"/> ethnic heritage	<input type="checkbox"/> law	<input type="checkbox"/> science
	<input type="checkbox"/> communications	<input type="checkbox"/> exploration/ settlement	<input type="checkbox"/> literature	<input type="checkbox"/> social history
	<input type="checkbox"/> community planning		<input type="checkbox"/> maritime history	<input type="checkbox"/> transportation
	<input type="checkbox"/> conservation		<input type="checkbox"/> military	<input type="checkbox"/> other: _____

Specific dates N/A Architect/Builder N/A

Construction dates c. 1882-84, c. 1895-1915

Evaluation for:

National Register

Maryland Register

not evaluated

Prepare a one-paragraph summary statement of significance addressing applicable criteria, followed by a narrative discussion of the history of the resource and its context. (For compliance projects, complete evaluation on a DOE Form -- see manual.)

Summary:

William M. Engle was a young harness-maker living with his mother and sister in Lisbon in 1880. Two years later he purchased 11 acres for only \$190, and shortly after he was assessed for a house, valued at \$250. Then, in 1884 Engle promptly sold his two tracts and new house, to John A. Warfield. In 1890 Warfield sold the farm to David T. Barnes, who kept the farm until 1908. Frank and Anna Hartsock purchased the farm from the Barneses for \$2,800, but within five years were in financial trouble and were forced to sell, though for a substantial increase of \$3,250. The farm was purchased by Caleb and Emma Hackett, and their family would continue to own it for many years. After Caleb's death, Emma continued to manage the farm until she sold it in 1925 to her daughter, Viola Knill. Viola and her husband, Keefer, operated a poultry farm. The house started as a lobby-entry, two-room plan, the main block of the house, with the orientation facing to the north, and was built c. 1882-84. The ell was added later, probably c. 1895-1915, and at this time the house was reoriented to face west, toward Morgan Station Road.

Significance:

William M. Engle was a young harness-maker living with his mother and sister in Lisbon in 1880. Two years later he purchased 11 acres for only \$190, and in 1883 purchased another 11-acre lot for only \$325. The low purchase price suggests that neither tract had significant improvements. Shortly after Engle was assessed for the first of his two new lots, he was assessed for a house, valued at \$250. Then, in 1884 Engle promptly sold his two tracts and new house, to John A. Warfield. Whether Engle had tried his hand at farming and decided it was not for him, whether he was locating his business out of town and determined that was unwise, or whether he was experimenting with real estate development is not clear. Warfield, on the other hand, clearly was a farmer, owning three horses, seven cattle, and five hogs prior to buying the farm from Engle. Presumably, Warfield had been renting a farm and had saved enough to acquire a small farm in the hopes of advancement. This was not to be, and in 1890 Warfield sold the farm to David T. Barnes, who also assumed the outstanding mortgage on the property. By 1896 Warfield had been declared insolvent. Barnes, in contradistinction, kept the farm until 1908 and after he

Maryland Historical Trust

Maryland Inventory of Historic Properties Form

Inventory No. HO-1157

Name
Continuation Sheet

Number 8 Page 1

sold it, was assessed for 68 ½ acres. Presumably, Barnes was able to use the small farm to generate enough income to enable him eventually to move to a slightly larger one. Barnes was already 43 when he purchased the Engle Farm, and was 61 by the time that he sold it, suggesting that while opportunities for advancement were there, they were also limited. Barnes did not marry until he was 36, and he and his wife, Hannah (who was 18 when they married), only had one child, a daughter also named Hannah. Thus, David Barnes did not have any sons to help him with farm work, which likely also limited his chances for advancement. By 1910 his daughter had married Arthur Kolb and they were living and working on the farm. Thus, it may have been that Barnes was able to acquire a larger farm because of the assistance of his son-in-law.¹

Frank and Anna Hartsock purchased the farm from the Barneses for \$2,800, but within five years were in financial trouble and were forced to sell, though for a substantial increase of \$3,250. The farm was purchased by Caleb and Emma Hackett, and their family would continue to own it for many years. After Caleb's death, Emma continued to manage the farm until she sold it in 1925 to her daughter, Viola Knill, retaining a life estate on the property. Viola and her husband, Keefer, operated a poultry farm, which makes sense given the small size of their land holdings. They were able to add almost four acres in 1943, and the following year sold the farm to their daughter, Emma Regina Knill. Emma married a Mr. Cope, and after her death in 2000 the farm passed to her three daughters, Linda Harbin, Joan Miller, and Anita Funk. By this time the farm had been reduced to just over 6 acres. It remains in the Harbin family to this day.²

The house started as a lobby-entry, two-room plan, the main block of the house, with the orientation facing to the north. There is little with which to date this, but the flooring and the construction and configuration of the transom are consistent with the period c. 1865-1885, and the deed information suggests that this part of the house was built at the end of that period, c. 1882-84. The ell was added later, probably c. 1895-1915, and at this time the house was reoriented to face west, toward Morgan Station Road. It was given two front doors and a larger front porch. Presumably, the kitchen was always in the east room of the main block and this reconfiguration placed the kitchen to the rear in the house, which is the common pattern. These changes were possibly made by David and Hannah Barnes, or more likely during the brief ownership of Frank and Anna Hartsock. It may have been this expansion that put them into financial straits. The second story of the ell appears to have originally contained two

¹ U. S. Bureau of the Census, District 4, Howard County, Maryland, 1880. Howard County Commissioners of the Tax, Assessment, District 4, 1876-96, Maryland State Archives. Howard County Commissioners of the Tax, Assessment, District 4, 1896-1910, Maryland State Archives. U. S. Bureau of the Census, District 4, Howard County, Maryland, 1900. U. S. Bureau of the Census, District 4, Howard County, Maryland, 1910.

² U. S. Bureau of the Census, District 4, Howard County, Maryland, 1920. U. S. Bureau of the Census, District 4, Howard County, Maryland, 1930.

Maryland Historical Trust Maryland Inventory of Historic Properties Form

Inventory No. HO-1157

Name
Continuation Sheet

Number 8 Page 2

chambers, with one of them shortly divided in two to provide space for a bathroom. When the basement was first excavated, probably in the post-World War II era, access was through a trap door in the floor, but later exterior access was created. The outbuildings all seem to date to the twentieth century and were probably added incrementally by the Barnes, Hartsock, Hackett and Knill families.

9. Major Bibliographical References

Inventory No. HO-1157

See footnotes

10. Geographical Data

Acreage of surveyed property 6.277 A
Acreage of historical setting 22 A
Quadrangle name Woodbine

Quadrangle scale: 1:24000

Verbal boundary description and justification

The boundaries consist of the outlines of the property, tax map 8, parcel 9, which encompasses all of the historic buildings and features on the site.

11. Form Prepared by

name/title	Ken Short		
organization	Howard County Department of Planning & Zoning	date	July 2017
street & number	3430 Courthouse Drive	telephone	410-313-4335
city or town	Ellicott City	state	MD

The Maryland Inventory of Historic Properties was officially created by an Act of the Maryland Legislature to be found in the Annotated Code of Maryland, Article 41, Section 181 KA, 1974 supplement.

The survey and inventory are being prepared for information and record purposes only and do not constitute any infringement of individual property rights.

return to: Maryland Historical Trust
DHCD/DHCP
100 Community Place
Crownsville, MD 21032-2023
410-514-7600

Engle-Hartsock-Knill Farm (HO-1157)
 1181 Morgan Station Rd
CHAIN OF TITLE

GRANTOR/HOME	GRANTEE/HOME	DATE	LIBER/ FOLIO	INSTRU- MENT	CONSIDER- ATION	ACREAGE	NOTES
Linda C. Harbin Steven M. Harbin / ?	Steven M Harbin Tiana L Coll / ?	2 December 2011	MDR 13748-87	Deed-fee simple	\$0	6.2775 A	SMH is son of LCH SMH & TLC are H&W
Anita Marie Funk Linda Viola Harbin / ?	Linda C. Harbin Stephen M. Harbin / ?	9 June 2003	MDR 7259-558	Merger Deed- fee simple	\$0	0.1026 A	Portion to be added to p. 9 from p. 395 as one parcel
Anita Funk Linda Harbin Pers. reps of Emma Regina Cope (aka Emma R. Knill), et al	Linda C. Harbin Stephen M. Harbin / ?	22 May 2003	MDR 7215- 664	Confirmatory Deed-fee simple	\$0	6.235 A.	Correct description of property
Linda Viola Harbin Anita Marie Funk Joan Regina Miller / ?	Linda C. Harbin Stephen M. Harbin, mother & son / ?	11 April 2002	MDR 6112- 463	Deed-fee simple	\$176,755	6.1805 A.	
Anita Marie Funk Linda Viola Harbin Pers. reps. of Emma Regina Cope (aka Emma R. Knill) / ?	Linda Viola Harbin Joan Regina Miller Anita Marie Funk / ?	3 January 2002	MDR 5900- 270	Adjoinder deed- fee simple	\$0	D. .9034 A E. 1.0528 A F. 4.2242 A G. .0001 A	LVH aka Linda C. Harbin ERC d. 9 Oct. 2000 Grantees are daughters of ERC D. Portion of old road bed of Morgan Station Rd creates parcel H.

Engle-Hartsock-Knill Farm (HO-1157)
 1181 Morgan Station Rd
CHAIN OF TITLE

W. Keefer Knill & wf Viola A. Knill / Howard	Emma Regina Knill / Howard	11 Oct. 1944	BM Jr. 183-62	Deed-fee simple	\$5.00	1. 22 A+- 2. 3.95 A	2 contiguous tracts ECH dec'd
Naiomi Leishear, Unmarried	W. Keefer Knill	6 May 1943	BM Jr. 178-1				2.
Emma C. Hackett, widow / Howard	Viola A. Knill / Howard	16 June 1925	HBN 124-33	Deed-fee simple	\$5.00	22 A+-	CHH dec'd life estate to grantor 1.
Frank Hartsock & wife Anna E. Charles A. Norwood	Caleb H. Hackett & wife Emma C.	27 March 1913	WWLC 96- 535	Deed-fee simple	\$3,250	22 A+-	Norwood releases prop. From judgement of \$2,000 to him from Hartsocks. 15 Oct. 1908, Ho Co. Circuit Court Judgement Docket 7, folio 30 1.
David T. Barnes & wf. Hannah C. / Howard	Frank Hartsock / ?	29 September 1908	WWLC 86- 237	Deed-fee simple	\$2,800	22 A+-	p/o Alexander the Second p/o Warfields 1.
John A. Warfield & wife Ella / ?	David T. Barnes / ?	22 August 1890	JHO 56-271	Deed-?	\$500.00 & assumption of mortgage debt	22 A+-	Where the grantors now live \$1,000 mortgage to Sallie D. Harrison, 55- 515, 1 Apr. 1890 1.

Engle-Hartsock-Knill Farm (HO-1157)
 1181 Morgan Station Rd
CHAIN OF TITLE

John A. Warfield / Howard	Ella Warfield wife of JAW.	23 January 1888	LJW 53-125	Deed-?	\$675.00	22 A+-	Subject to mortgage for \$700 to James McCubin 1.
William H. Engle & wife Addie M. / ?	John Albert Warfield / ?	1 October 1884	LJW 49-45	Deed-fee simple	\$1,275	22 A+-	2 deeds, W. & X. 1.
John M. Warfield & wife Elizabeth / ?	William M. Engle / ?	4 June 1883	LJW 46-430	Deed-fee simple	\$325.00	11 A+-	Adjoins W.M.E's lot [no previous reference] X.
Sarah Josephine Mantle & husband William / ?	William M. Engle / ?	19 January 1882	LJW 44-353	Deed-fee simple	\$190.00	11 A+-	Adjoins John M. Warfield's lot [no previous reference] W.

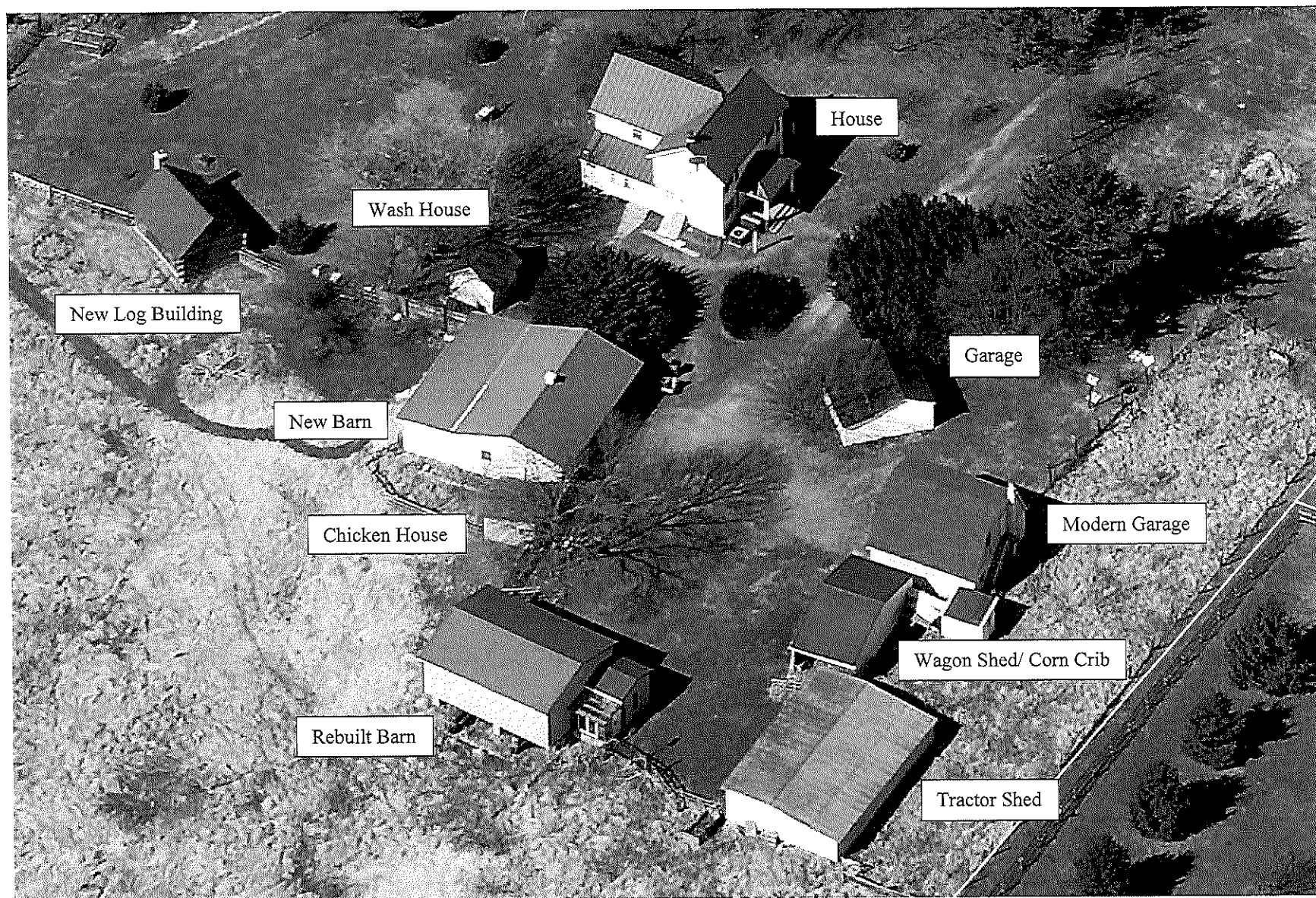
1/1

1181 Morgan Station Rd. (HO-1157)

RMS

Moulding Profile - 271 Addition NWD oor 12 Jan. '17





HO-1157 Engle-Hartsock-Knill Farm 1181 Morgan Station Road Site Plan



HO-1157
Engle-Hartssock-Knill Farm
1181 Morgan Station Rd
Woodbine Quad



HO-1157
Engle-Hartsock-Knill Farm
1181 Morgan Station Rd
Howard County DPZ Interactive Map

HO-1157
Engle-Hartsock-Knill Farm
1181 Morgan Station Road
Howard County, Maryland
Ken Short, photographer

Photo Log

Nikon D-610
Epson Ultra Premium Photo Paper Glossy
Epson Matte Black UltraChrome ink cartridge

HO-1157_2017-01-12_01
House, north elevation

HO-1157_2017-01-12_02
House, west elevation

HO-1157_2017-01-12_03
House, south & east elevations

HO-1157_2017-01-12_04
Washhouse, west & south elevations

HO-1157_2017-01-12_05
Garage, southwest & southeast elevations

HO-1157_2017-01-12_06
Wagon Shed/Corn Crib, south elevation

HO-1157_2017-01-12_07
Wagon Shed/Corn Crib, doorway jamb

HO-1157_2017-01-12_08
Wagon Shed/Corn Crib, northeast corner
framing



HO-1157

"Engle-Hartsock-Knill Farm"

1181 Morgan Station Road

Howard County, Maryland

Ken Short

2017-01-12

MD SHPO

House, north Elevation

1 of 8

HO-1157

"Engle-Hartsock-Knill Farm"

1181 Morgan Station Road

Howard County, Maryland

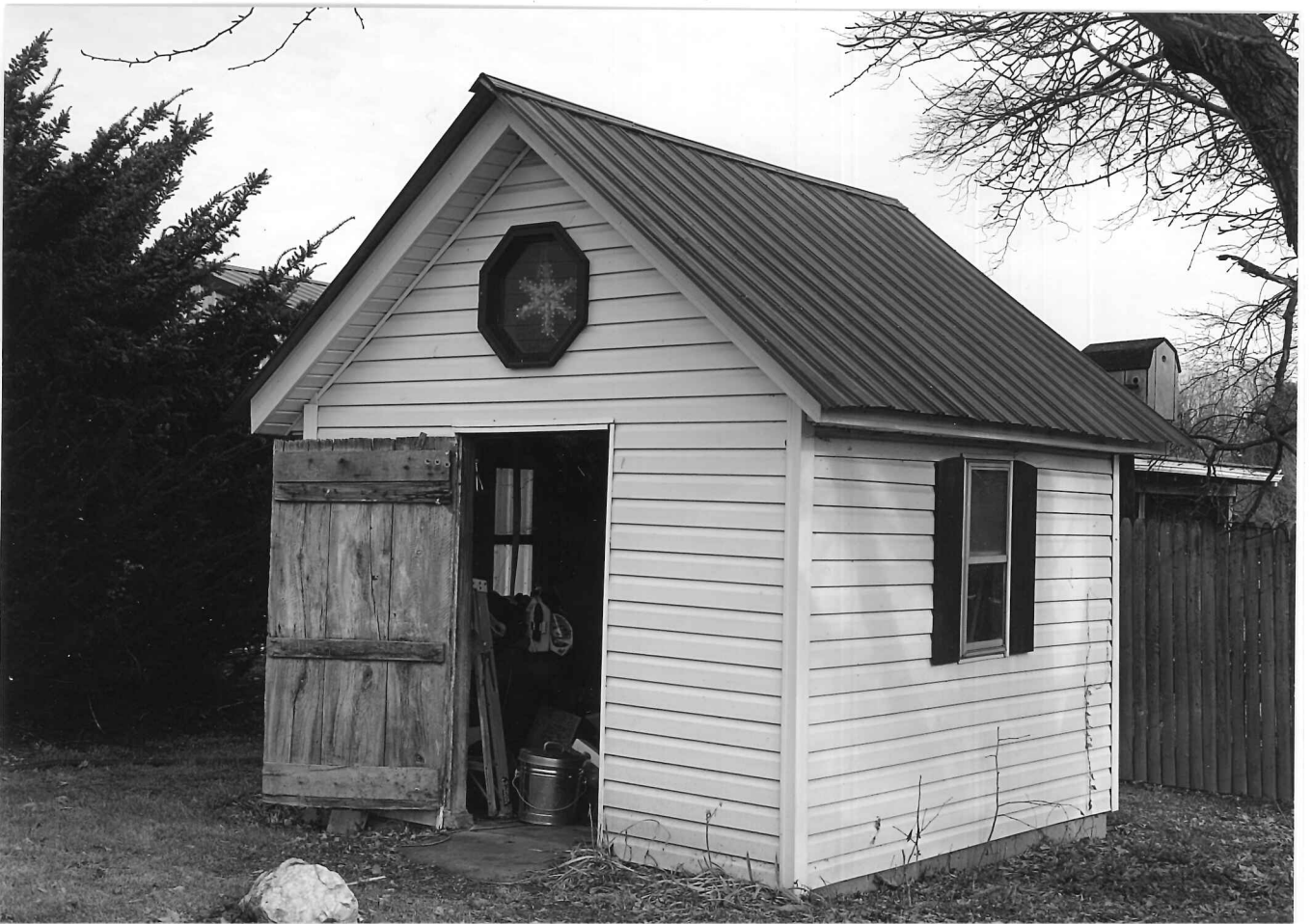
Ken Short

2017-01-12

MD SHPO

House, west elevation

2 of 8



HO - 1157

Engle-Hartsock - Knill Farm

1181 Morgan Station, Road

Howard County, Maryland

Ken Short

2017-01-12

MD SHPO

House, Southeast elevations

3 of 8

HO - 1157

Engle-Hartsock - Knill Farm

1181 Morgan Station Road

Howard County, Maryland

Ken Short

2017-01-12

MD SHPO

Washhouse, West & South elevations

4 of 8



HO - 1157

Engle-Hartsock - Knoll Farm

1181 Morgan Station Road

Howard County, Maryland

Ken Short

2017-01-12

MD SHPO

Garage, southwest & southeast elevations.

5 of 8

HO - 1157

Engle-Hartsock - Knoll Farm

1181 Morgan Station Road

Howard County, Maryland

Ken Short

2017-01-12

MD SHPO

Wagon shed / Corn Crib, south elevation

6 of 8



HO - 1157

Engle-Hartsock - Knill Farm

1181 Morgan Station Road

Howard County, Maryland

Ken Short

2017-01-12

MD SHPO

Wagon Shed/Corn Crib, doorway jamb

7 of 8

HO - 1157

Engle-Hartsock - Knill Farm

1181 Morgan Station Road

Howard County, Maryland

Ken Short

2017-01-12

MD SHPO

Wagon Shed/Corn Crib, northeast corner
framing

8 of 8