

United States Department of the Interior  
National Park Service

National Register of Historic Places  
Registration Form

This form is for use in nominating or requesting determinations for individual properties and districts. See instructions in *How to Complete the National Register of Historic Places Registration Form* (National Register Bulletin 16A). Complete each item by marking "x" in the appropriate box or by entering the information requested. If an item does not apply to the property being documented, enter "N/A" for "not applicable." For functions, architectural classification, materials, and areas of significance, enter only categories and subcategories from the instructions. Place additional entries and narrative items on continuation sheets (NPS Form 10-900a). Use a typewriter, word processor, or computer, to complete all items.

1. Name of Property

historic name BRICK HOUSE ON THE PIKE (preferred)

other names/site number Brick House Farm; Ellerslie

2. Location

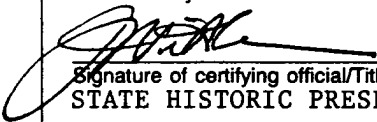
street & number 9564 Baltimore National Pike N/A  not for publication

city or town Ellicott City N/A  vicinity

state Maryland code MD county Howard code 027 zip code 21043

3. State/Federal Agency Certification

As the designated authority under the National Historic Preservation Act, as amended, I hereby certify that this  nomination  request for determination of eligibility meets the documentation standards for registering properties in the National Register of Historic Places and meets the procedural and professional requirements set forth in 36 CFR Part 60. In my opinion, the property  meets  does not meet the National Register criteria. I recommend that this property be considered significant  nationally  statewide  locally. ( See continuation sheet for additional comments.)

  
Signature of certifying official/Title

11-21-95  
Date

STATE HISTORIC PRESERVATION OFFICER

State of Federal agency and bureau

In my opinion, the property  meets  does not meet the National Register criteria. ( See continuation sheet for additional comments.)

Signature of certifying official/Title

Date

State or Federal agency and bureau

4. National Park Service Certification

I hereby certify that the property is:

Signature of the Keeper

Date of Action

- entered in the National Register.
  - See continuation sheet.
- determined eligible for the National Register
  - See continuation sheet.
- determined not eligible for the National Register.
- removed from the National Register.
- other, (explain:)

\_\_\_\_\_  
\_\_\_\_\_  
\_\_\_\_\_  
\_\_\_\_\_

Brick House on the Pike  
Name of Property

Howard Co., Maryland  
County and State

HO-25

**5. Classification**

**Ownership of Property**  
(Check as many boxes as apply)

- private
- public-local
- public-State
- public-Federal

**Category of Property**  
(Check only one box)

- building(s)
- district
- site
- structure
- object

**Number of Resources within Property**  
(Do not include previously listed resources in the count.)

Contributing	Noncontributing	
2	0	buildings
		sites
4	0	structures
		objects
6	0	Total

**Number of contributing resources previously listed in the National Register**

0

**Name of related multiple property listing**  
(Enter "N/A" if property is not part of a multiple property listing.)

N/A

**6. Function or Use**

**Historic Functions**  
(Enter categories from instructions)

DOMESTIC/single dwelling  
AGRICULTURAL/SUBSISTENCE/agricultural outbuilding

**Current Functions**  
(Enter categories from instructions)

WORK IN PROGRESS

**7. Description**

**Architectural Classification**  
(Enter categories from instructions)

EARLY REPUBLIC  
FEDERAL

**Materials**  
(Enter categories from instructions)

foundation Stone  
walls Brick  
roof Asphalt  
other \_\_\_\_\_

**Narrative Description**

(Describe the historic and current condition of the property on one or more continuation sheets.) See Continuation Sheet No. 1

**8. Statement of Significance**

**Applicable National Register Criteria**

(Mark "x" in one or more boxes for the criteria qualifying the property for National Register listing.)

- A Property is associated with events that have made a significant contribution to the broad patterns of our history.
- B Property is associated with the lives of persons significant in our past.
- C Property embodies the distinctive characteristics of a type, period, or method of construction or represents the work of a master, or possesses high artistic values, or represents a significant and distinguishable entity whose components lack individual distinction.
- D Property has yielded, or is likely to yield, information important in prehistory or history.

**Criteria Considerations**

(Mark "x" in all the boxes that apply.)

Property is:

- A owned by a religious institution or used for religious purposes.
- B removed from its original location.
- C a birthplace or grave.
- D a cemetery.
- E a reconstructed building, object, or structure.
- F a commemorative property.
- G less than 50 years of age or achieved significance within the past 50 years.

**Areas of Significance**

(Enter categories from instructions)

ARCHITECTURE

**Period of Significance**

C.1770-c.1907

**Significant Dates**

c. 1817

**Significant Person**

(Complete if Criterion B is marked above)

N/A

**Cultural Affiliation**

N/A

**Architect/Builder**

Unknown

**Narrative Statement of Significance**

(Explain the significance of the property on one or more continuation sheets.)

See Continuation Sheet No. 9

**9. Major Bibliographical References**

**Bibliography**

(Cite the books, articles, and other sources used in preparing this form on one or more continuation sheets.)

**Previous documentation on file (NPS):**

- preliminary determination of individual listing (36 CFR 67) has been requested
- previously listed in the National Register
- previously determined eligible by the National Register
- designated a National Historic Landmark
- recorded by Historic American Buildings Survey # \_\_\_\_\_
- recorded by Historic American Engineering Record # \_\_\_\_\_

**Primary location of additional data:**

- State Historic Preservation Office
- Other State agency
- Federal agency
- Local government
- University
- Other

Name of repository:

Brick House on the Pike  
Name of Property

Howard Co., Maryland  
County and State

HO-25

**10. Geographical Data**

**Acreeage of Property** approximately 3 acres

USGS quad: Ellicott City, MD

**UTM References**

(Place additional UTM references on a continuation sheet.)

1 

1	8
---	---

3	4	0	9	6	0
---	---	---	---	---	---

4	3	4	9	1	7	0
---	---	---	---	---	---	---

  
Zone Easting Northing

3 

--	--

--	--	--	--	--	--

--	--	--	--	--	--	--	--

  
Zone Easting Northing

See continuation sheet

**Verbal Boundary Description**

(Describe the boundaries of the property on a continuation sheet.) See Continuation Sheet No. 13

**Boundary Justification**

(Explain why the boundaries were selected on a continuation sheet.) See Continuation Sheet No. 13

**11. Form Prepared By**

name/title Peter E. Kurtze, Architectural Historian

organization \_\_\_\_\_ date 7 September 1994

street & number 109 Brandon Road telephone (410) 296-7538

city or town Baltimore state MD zip code 21212

**Additional Documentation**

Submit the following items with the completed form:

**Continuation Sheets**

**Maps**

A USGS map (7.5 or 15 minute series) indicating the property's location.

A Sketch map for historic districts and properties having large acreage or numerous resources.

**Photographs**

Representative black and white photographs of the property.

**Additional items**

(Check with the SHPO or FPO for any additional items)

**Property Owner**

(Complete this item at the request of SHPO or FPO.)

name Brick House on the Pike Limited Liability Co., c/o Edward B. Rogers

street & number P.O. Box 902 telephone (410) 461-7624

city or town Ellicott City state MD zip code 21043

**Paperwork Reduction Act Statement:** This information is being collected for applications to the National Register of Historic Places to nominate properties for listing or determine eligibility for listing, to list properties, and to amend existing listings. Response to this request is required to obtain a benefit in accordance with the National Historic Preservation Act, as amended (16 U.S.C. 470 et seq.).

**Estimated Burden Statement:** Public reporting burden for this form is estimated to average 18.1 hours per response including time for reviewing instructions, gathering and maintaining data, and completing and reviewing the form. Direct comments regarding this burden estimate or any aspect of this form to the Chief, Administrative Services Division, National Park Service, P.O. Box 37127, Washington, DC 20013-7127; and the Office of Management and Budget, Paperwork Reductions Projects (1024-0018), Washington, DC 20503.

United States Department of the Interior  
National Park Service

**National Register of Historic Places  
Continuation Sheet**

BRICK HOUSE ON THE PIKE  
Howard County  
Maryland

Section number 7 Page 1

---

**DESCRIPTION SUMMARY:**

The building traditionally known as the Brick House on the Pike is a large two-story, side-passage, double-pile plan house constructed c. 1817, located on the north side of Baltimore National Pike, west of Ellicott City in Howard County, Maryland. A service wing extending from the east gable incorporates an earlier (possibly mid-18th century) structure; the wing was raised to 1½ stories in the early twentieth century. The interior of the main block remains essentially unaltered, with the majority of its original Federal style decorative detailing intact, including an arch in the stair passage with reeded columns and punch-and-gouge work detailing, a highly ornamental open-well stair, molded plaster cornices, mantels, six-panel doors, door and window architrave trim, and baseboards. Also on the property and contemporary with the main house are a stone stable/carriage house and a stone foundation, probably that of an ice house; in addition, there are three board-and-batten outbuildings dating from the late nineteenth or early twentieth century.

See Continuation Sheet No. 2

United States Department of the Interior  
National Park ServiceNational Register of Historic Places  
Continuation SheetBRICK HOUSE ON THE PIKE  
Howard County  
MarylandSection number 7 Page 2**GENERAL DESCRIPTION:**

The Brick House on the Pike is sited atop a knoll facing south toward Baltimore National Pike. It is a large gable-roofed, brick dwelling, comprising three major periods of construction. In its present configuration, it comprises a two-story main block with a side-passage, double-pile plan; a 1½ story wing, two rooms deep, extends to the east. The south room of the present east wing appears to be the earliest portion, possibly dating from the mid-eighteenth century. This room measures approximately 26' wide by 17' deep, and likely stood as an independent structure, perhaps a 1½ story hall/parlor plan dwelling, when Caleb Dorsey acquired the property in the early 1770s. About 1817, the main block was added against the west gable of the earlier building; it is likely that the wing also was increased in depth at that time to provide a kitchen and service area. About 1907, the wing was raised in height, creating several bedrooms and a bath in the half-story, and a broad porch was added across the south facade.

The building is constructed of brick, which is uniformly painted white. The masonry of the south facade of both the main block and the wing is laid in Flemish bond; secondary elevations are laid in five-course common bond. The foundation is uncoursed rubble.

The south facade of the main block is three bays wide, with the principal entrance located in the easternmost bay. The entrance comprises a six-panel door in a paneled jamb. The panels have shallow fields and quarter-round cutouts at the corners, a familiar characteristic of the Federal style in the region. Panel molds have a cyma recta profile. The door is surmounted by a fanlight featuring exceptionally refined tracery executed in metal. The threshold is cut stone. The remaining ground-floor bays hold large 12/12 windows in openings with multi-coursed jack arches and cut stone sills. The upper story has three 12/12 windows, somewhat smaller than those below, with simple one-brick jack arches and cut stone sills. An elaborate gougework bed mold enriches the boxed cornice. The ground floor of the south facade is spanned by a broad porch resting on brick piers; Colonial Revival columns support the shed roof, which is enriched with a boxed cornice with bed and crown molds.

See Continuation Sheet No. 3

United States Department of the Interior  
National Park ServiceNational Register of Historic Places  
Continuation SheetBRICK HOUSE ON THE PIKE  
Howard County  
MarylandSection number 7 Page 3

The west gable end of the main block is unfenestrated except for two small square 2/2 windows lighting the attic. These openings have rowlock lintels and stone sills. The gable is finished with beaded, tapered rakeboards. A tall, parapet-style interior end chimney is corbeled out from the wall plane approximately one inch. The east gable end of the main block, above the roofline of the wing, has a single window opening holding a nine-light casement located to the south of center (a second attic window opening is covered by the roof of the wing). Both gables are finished with beaded, tapered rakeboards.

The south facade of the wing is three bays wide. The westernmost bay holds an entrance, with double French-style doors (early twentieth century replacements) surmounted by a four-light transom. The remaining bays hold 12/12 sash in openings topped with splayed arches. A broad porch spans the facade, sheltered by an extension of the south slope of the gable roof which is supported on Colonial Revival columns. The half-story is lighted by three gabled dormers, evenly spaced across the south slope of the roof; these dormers hold 6/6 sash, and are trimmed with pilasters and a boxed cornice. Windows throughout the south facade are fitted with louvered shutters, probably installed in the c.1907 renovations.

The east gable end of the wing has a single 9/9 window located near the south corner, and a small entrance offset to the north of center, served by a one-bay-wide, shed-roofed porch. Three 6/6 sash light the upper story. A tall, broad parapet chimney rises from the peak of the gable. The brick masonry above the ground story has been extensively reworked.

The north wall of the wing is pierced by three equally-spaced 6/6 windows on the ground story, in openings topped by single-brick jack arches. The masonry is laid in five-course bond to the level of the jack arches, and changes to running bond above them. The north slope of the roof has a large central dormer with a pair of 6/6 windows, a product of the early twentieth century raising of the half-story.

The west wall of the wing adjoins the northeast corner of the main block, and is unfenestrated except for a 6/6 window in the

See Continuation Sheet No. 4

United States Department of the Interior  
National Park Service

**National Register of Historic Places**  
**Continuation Sheet**

BRICK HOUSE ON THE PIKE  
Howard County  
Maryland

Section number 7 Page 4

---

half-story.

The north elevation of the main block is three bays wide, laid in five-course bond. There is an entrance in the east bay holding an unusual and apparently original door with two fielded panels below the lock rail and nine lights of glazing above. This door is set within a paneled jamb detailed in a manner similar to that of the front (south) entrance, but without the quarter-round cutouts in the corners of the panels. The remaining ground-floor bays (and the second-story bays above them) hold 12/12 sash in openings with single-brick jack arches and stone sills. The east bay has a 6/6 window at the level of the stair landing between the first and second stories, and a 3/3 sash at the landing between the second floor and the attic.

On the interior, the main block is organized in a side-passage, double-pile plan; the south room of the wing serves as a dining room, with kitchen and service spaces on the north.

The south entrance opens into a formal stair passage which runs the full depth of the house. This space is richly detailed, with complex architrave, chair rail, and baseboard trim, a molded plaster cornice, and an outstanding central arch. The woodwork is exceptionally elaborate and well-crafted, and combines several molding profiles and elements associated with the Federal style. The architraves are enriched with a form of cove/astragal backband, a broken field with a small ogee at the transition, and a bold torus at the edge. The chair rail has an ogee/astragal shelf, a reeded field, and a Greek ogee/astragal base. Baseboards are capped with a cove molding above a torus. The central arch is supported on reeded columns; the column capitals and the fascia of the arch are detailed with punch- and gougework; the fascia is finished with a cove/astragal backband, and the soffit is reeded with a complex central panel. The three-flight, open-well stair rises against the east wall; it features a slender turned newel, rectangular balusters, and a mushroom-profile handrail (all of walnut or mahogany), scrolled step ends, and fielded paneling in the spandrel. A six-paneled door under the stair provides access to the basement.

See Continuation Sheet No. 5



**United States Department of the Interior  
National Park Service****National Register of Historic Places  
Continuation Sheet**BRICK HOUSE ON THE PIKE  
Howard County  
MarylandSection number 7 Page 5

The southwest (front) room features decorative detailing comparable in quality and complexity to that of the stair passage. An elaborate molded plaster cornice, similar to that in the passage, encircles the ceiling. Six-panel doors have fielded panels with a cyma recta panel mold; they retain early hardware, including five-knuckle hinges and mortise locks. Architraves have a Greek ogee/astragal backband, broken field enriched with an ogee, and a torus at the edge; baseboards have Greek ogee/astragal caps; chair rail is identical to that in the passage. Windows are framed with paneled jambs, with panels below the sills. The focus of the room is an elaborate mantel on the west wall, featuring paired freestanding columns supporting paneled corner blocks and a bowed shelf. The columns have capitals with an abstracted foliate motif which is Egyptian in feeling. The edge of the shelf is treated with a cove/ogee molding; the bed molding is enriched with a row of dentils, with an ogee molding above and below. The frieze is decorated with applied molding, creating a rectangular panel with quarter-round cutout corners; a reeded band appears below the frieze. The fireplace opening is framed by cove/ovolo backband.

Detailing of the northwest (rear) room is generally less elaborate than that of the front room. Architraves have a Greek ogee/astragal backband, a plain (unmolded) step, and a large bead at the edge. Chair rail has a torus/cove shelf, a plain field, and a Greek ogee/astragal base. The baseboard is capped with an ogee and fillet. Windows are set in paneled jambs, with flat panels framed with a cove panel mold. The mantel on the west wall has an ogee shelf on geometrical paneled corner blocks above pilasters; the frieze is decorated with an applied rectangle of half-round molding. The general form and design of this mantel appears derived from that in the front room; the character of this mantel, however, suggests that it may be an early twentieth century reproduction. The chimney breast is flanked on either side by early cabinets with beaded shelves. The upper doors have been removed; the lower doors have flat panels with a cove panel mold.

The front room of the wing serves as a formal dining room. There is a fireplace on the east wall, trimmed with a Federal-style mantel, and a glazed cabinet to the left of the chimney breast. A 9/9 window is located to the right of the fireplace in the east wall, and two 12/12 windows are located in the south wall. The

See Continuation Sheet No. 6

United States Department of the Interior  
National Park Service

National Register of Historic Places  
Continuation Sheet

BRICK HOUSE ON THE PIKE  
Howard County  
Maryland

Section number 7 Page 6

---

window sash and jambs (treated with an ogee/ovolo panel mold) may date from the mid- to late eighteenth century, but the remainder of the interior trim is consistent with the second period of construction, c.1817. The thickness of the north wall of this room indicates that it was originally an exterior wall.

The wing apparently was increased in depth in the course of the c.1817 construction. The space which was added, north of the dining room, contains a kitchen in the eastern portion, and a service area to the west. A coal-fired cast iron cookstove was installed around the turn of the twentieth century. The stove carries the logo "Queen Kitchener No. 28", and an 1896 patent date. The area west of the kitchen probably originally served as a pantry; it was altered c. 1907 to create a bathroom and a stair to the upper floor of the wing. An opening in the west wall provides access to the basement of the main block.

On the second story of the main block, there are two large chambers to the west, and a small unheated room at the head of the stair. Door architraves facing the stair passage and in the south chamber are trimmed with Greek ogee/astragal backbands, stepped fields, and a beaded edge; elsewhere, the architraves lack the stepped field. Windows are framed with cove/astragal backbands. Chair rail throughout the rooms has an ogee cap, plain field, and Greek ogee/astragal base; in the stair passage, the chair rail repeats the profile of the handrail. Baseboards are capped with a cove and torus in the stair passage, and with an ogee and fillet inside the rooms. The north and south chambers are served by fireplaces with relatively simple Federal-style mantels, with paneled pilasters, plain side blocks, and a shelf treated with Greek ogee/astragal molding. The north room has early cabinets with flat paneled doors flanking the chimney breast on the west wall, and retains a section of peg rail just inside the door from the passage. Doors have six fielded panels, and retain mahogany painted graining with a scribed simulated inlay.

An arched opening in the east wall of the main block was created when the wing was raised, to provide access to the upper floor of the wing. This area contains four small rooms, various closets, a bathroom and a back stair. Woodwork throughout is stock manufactured Colonial-style trim of the c.1907 period, including

See Continuation Sheet No. 7

United States Department of the Interior  
National Park Service

**National Register of Historic Places**  
**Continuation Sheet**

BRICK HOUSE ON THE PIKE  
Howard County  
Maryland

Section number   7   Page   7  

---

six-panel doors, stepped architraves, and a plain baseboard with Greek ovolo cap. Several doors in this area are finished with mahogany painted graining, in an effort to match early graining elsewhere in the house.

The main stair rises to an attic, which is partitioned into two rooms. The walls are finished with a rough plaster coat on split lath. Plaster lath is secured with early machine-made nails; larger nails found elsewhere in the attic are uniformly of the "double-struck" (machine-made shaft, hand headed) type. The technological transition reflected by this combination provides evidence supporting a construction date in the second decade of the nineteenth century.

The property retains several outbuildings, including a stone stable/carriage house located about 50 yards east of the dwelling; built of uncoursed rubble with prominent quoins, this building is probably contemporaneous with the house.

An early rubble foundation measuring approximately 13 by 14 feet is located north of the house. This feature is deeply excavated, and probably represents an ice house.

Three frame outbuildings of the late nineteenth or early twentieth century complete the grouping. Clad in circular-sawn board-and-batten siding secured with wire nails, these include a combination granary and corncrib adjacent to the stable, a garage or wagon shed near the northeast corner of the house, and a small gable-roofed shed northwest of the garage.

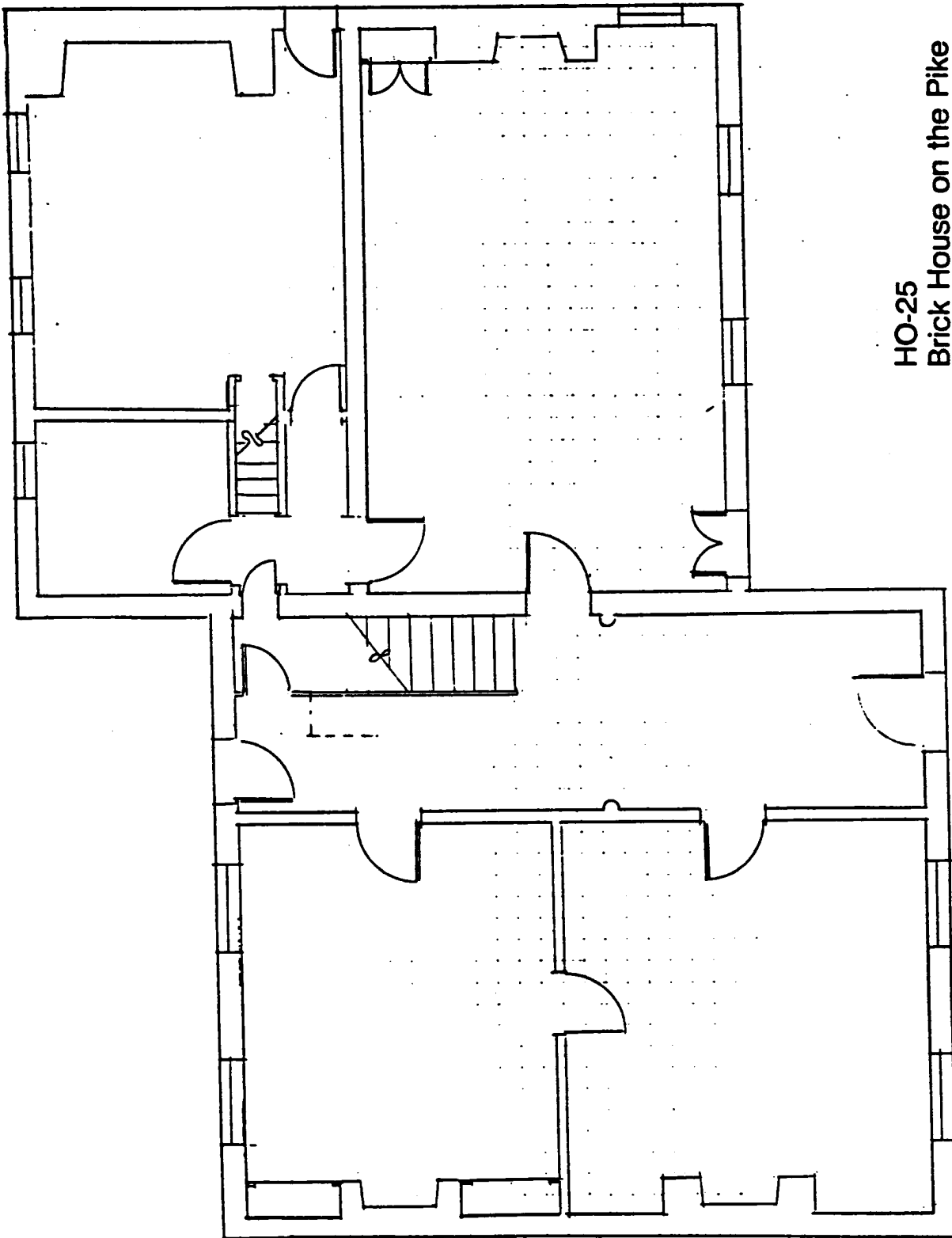
See Continuation Sheet No. 8

United States Department of the Interior  
National Park Service

# National Register of Historic Places Continuation Sheet

BRICK HOUSE ON THE PIKE  
Howard County  
Maryland

Section number 7 Page 8



HO-25  
Brick House on the Pike  
Howard County, Maryland  
Sketch Plan (not to scale)

United States Department of the Interior  
National Park Service

**National Register of Historic Places  
Continuation Sheet**

BRICK HOUSE ON THE PIKE  
Howard County  
Maryland

Section number 8 Page 9

---

**SIGNIFICANCE SUMMARY:**

The Brick House on the Pike is significant for its architecture, as a well-preserved example of a side-passage, double-pile house of the Federal period, exhibiting outstanding craftsmanship in its construction and decorative detailing. Perhaps a half-dozen examples of the type survive in Howard County; Brick House is distinguished among them by the exceptionally high quality of its interior finish. A clear hierarchy of the use of space is apparent in the decorative detailing, which becomes progressively less elaborate as the spaces become less public: the entrance hall and front parlor are most richly detailed, and the degree of elaboration diminishes through the first-floor rear room, the second-floor stair passage, chambers, and attic. The architectural significance of this resource is enhanced by its high degree of integrity; the early features of the house were left essentially untouched in the c. 1907 alterations, and have remained intact and unrestored to the present day. The period of significance extends from c. 1770, the presumed date of the earliest section incorporated into the present house, through c. 1907, at which point it substantially achieved its present form.

See Continuation Sheet No. 10

United States Department of the Interior  
National Park Service

**National Register of Historic Places  
Continuation Sheet**

BRICK HOUSE ON THE PIKE  
Howard County  
Maryland

Section number 8 Page 10

---

**HISTORIC CONTEXT:**

MARYLAND COMPREHENSIVE HISTORIC PRESERVATION PLAN DATA

Geographic Organization: Piedmont

Chronological/Developmental Period(s):

Rural Agrarian Intensification	-	A.D. 1680-1815
Agricultural/Industrial Transition	-	A.D. 1815-1870
Industrial/Urban Dominance	-	A.D. 1870-1930

Prehistoric/Historic Period Theme(s):

Architecture/Landscape Architecture/Community Planning

Resource Type:

Category: Buildings

Historic Environment: Rural

Historic Function(s) and Use(s):

DOMESTIC/single dwelling  
AGRICULTURE/SUBSISTENCE/agricultural outbuilding

Known Design Source: None

See Continuation Sheet No. 11

United States Department of the Interior  
National Park Service

**National Register of Historic Places  
Continuation Sheet**

BRICK HOUSE ON THE PIKE  
Howard County  
Maryland

Section number 8 Page 11

---

**HISTORICAL BACKGROUND:**

In the early 1770s, Caleb Dorsey sold his extensive holdings on the south side of the Severn River and acquired several parcels in Upper Arundel (present Howard County), including parts of Day's Discovery, Mt. Bilboa, Benn's Delight, Benn's Luck, Pinstone's Delight, Gaither's Adventure, Rebecca's Lot, and Mt. Etna. Dorsey's removal to the then sparsely settled area was well timed; within the decade, the village of Ellicott's Mills a short distance to the east of his property would become an important center of commerce and industry for the region.

Tradition holds that a portion of the east wing of Brick House was in place on the property at the time Caleb Dorsey acquired it, and that Dorsey lived in this building during the construction of his dwelling, called "Arcadia", nearby to the northwest (no longer extant).

The several tracts which Dorsey had purchased were resurveyed and patented as "Three Brothers" on November 11, 1810. Caleb Dorsey deeded 284½ acres of Three Brothers, including the property on which Brick House stands, to his son, Charles Worthington Dorsey (1787-1864) on September 1, 1817.

The architectural character of the main block of Brick House suggests that it was constructed shortly after Charles Worthington Dorsey received title to the property. Upon his father's death in 1837, Charles Worthington Dorsey inherited an additional 301 acres of the tract.

Charles Worthington Dorsey and his wife, Mary Tolley Worthington, had eight children, including two daughters who were married to Thomas Watkins Ligon, who served as Governor of Maryland from 1854-58. Sarah Ann Dorsey became Ligon's first wife in 1840; following Sarah Ann's death, Ligon married her sister, Mary Tolley Dorsey, in 1854.

Brick House passed to Charles W. D. Ligon, who sold it in 1907 to Edward Mackubin Hammond. Hammond raised the wing to its present 1½ stories, and added the broad porch across the south facade. These alterations were carried out in the Colonial Revival spirit, and exhibit good design and craftsmanship of the period.

United States Department of the Interior  
National Park Service

# National Register of Historic Places Continuation Sheet

BRICK HOUSE ON THE PIKE  
Howard County  
Maryland

Section number   9   Page   12  

---

## MAJOR BIBLIOGRAPHICAL REFERENCES:

- Holland, Celia M. Old Homes and Families of Howard County, Maryland. Privately printed, 1987, pp. 115-118.
- Maryland Inventory of Historic Properties, Maryland Historical Trust, Crownsville, Maryland.
- Warfield, J.D. The Founders of Anne Arundel and Howard Counties, Maryland. Baltimore: Kohn and Pollock, 1905.



United States Department of the Interior  
National Park Service

**National Register of Historic Places  
Continuation Sheet**

BRICK HOUSE ON THE PIKE  
Howard County  
Maryland

Section number 10 Page 13

---

**VERBAL BOUNDARY DESCRIPTION:**

The boundary of the nominated property is shown as the heavy solid line on the accompanying map entitled "National Register Boundaries", dated September 1994 and drawn to a scale of 1"=100'.

**BOUNDARY JUSTIFICATION:**

The nominated property includes the landscaped domestic yard surrounding the house, representing the remnant of the parcel historically associated with the resource which has retained integrity. The boundaries include the house and outbuildings within their historic setting. Existing and planned residential development lies beyond the western and northern boundaries. To the east and south of the nominated property lies undeveloped wooded space; abrupt changes in topography also serve to define the east and south boundaries.

See Continuation Sheet No. 14

United States Department of the Interior  
National Park Service

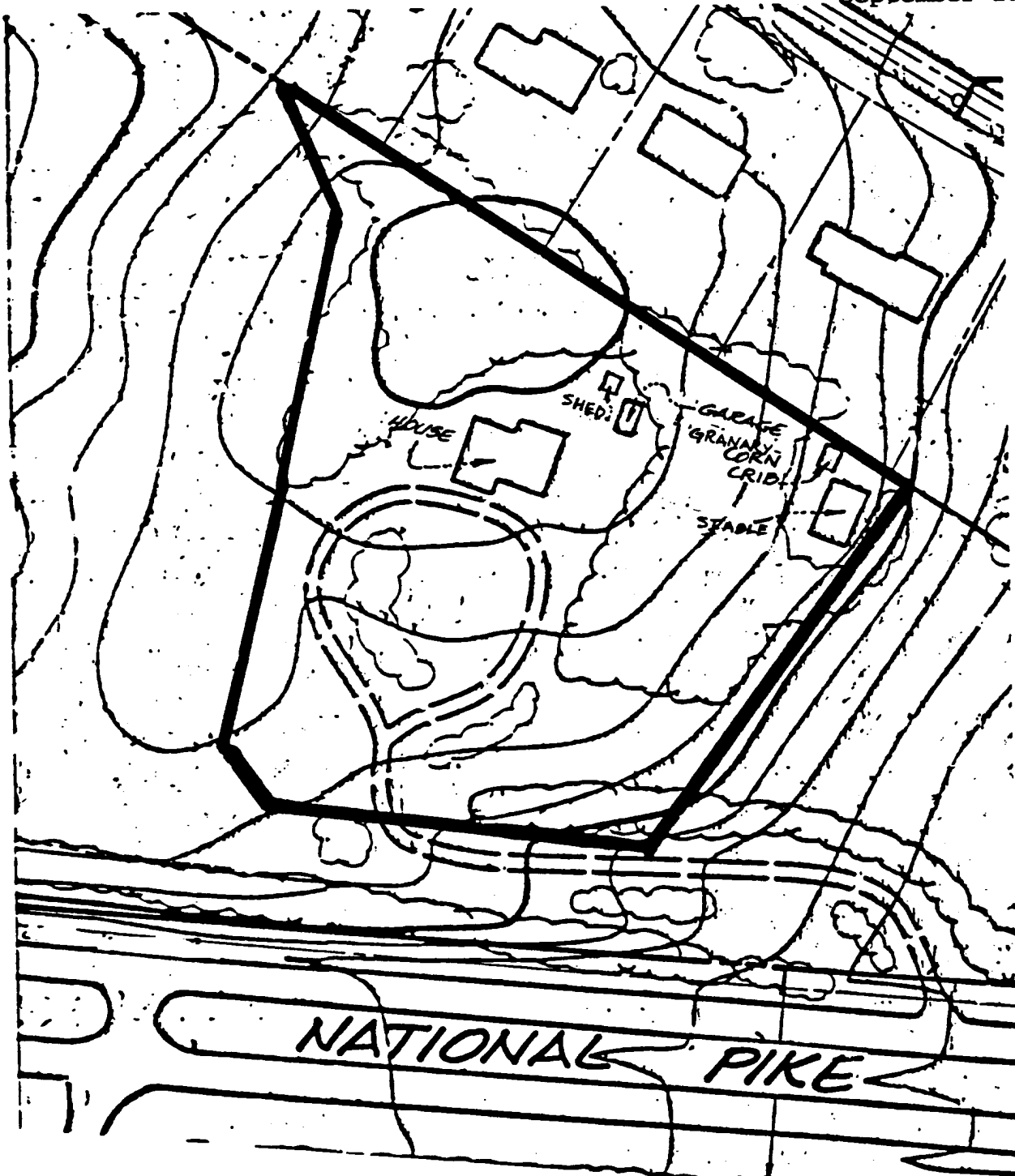
# National Register of Historic Places Continuation Sheet

BRICK HOUSE ON THE PIKE  
Howard County  
Maryland

Section number 10 Page 14

National Register Boundaries

Scale: 1"=100'  
September 1994



NO-25  
BRICK HOUSE ON THE PIKE  
Ellicott City  
Private

1700's & 1810

Architecturally the Old Brick House on the Pike has seen several enlargements, all of which have resulted in an over all plan which presents a well integrated east and west wing.

The original or east wing was only one story high and it was not until 1908 that it took its present form of one and a half stories with three gabled roof dormers under Mr. Edward Hammond. It is a three bay wide, two bay deep brick structure (laid in English bond) with a french door entrance lying in the west bay facing south surmounted by a four lite transom.

The west wing is a two story high, three bay wide, two bay deep brick structure whose south facade is laid in flemish bond, with a brick chimney inset into its west wall.

Other notable architectural features of the 1810 wing are the splayed brick flat arched lintels which decorate its south windows and an exquisite fanlite over the south entrance resting in the east bay.

Associated with the Dorsey family of Howard County two daughters of which later married Governor Ligon, the Old Brick House on the Pike remains an important link in the interesting chain of Howard County history.

MARYLAND HISTORICAL TRUST WORKSHEET

NOMINATION FORM  
for the  
NATIONAL REGISTER OF HISTORIC PLACES, NATIONAL PARKS SERVICE

SEE INSTRUCTIONS

<b>1. NAME</b>							
COMMON: Brick House on the Pike							
AND/OR HISTORIC:							
<b>2. LOCATION</b>							
STREET AND NUMBER: 9564 Baltimore National Pike							
CITY OR TOWN: Ellicott City							
STATE: Maryland			COUNTY: Howard				
<b>3. CLASSIFICATION</b>							
CATEGORY (Check One)		OWNERSHIP		STATUS	ACCESSIBLE TO THE PUBLIC		
<input checked="" type="checkbox"/> District <input type="checkbox"/> Building <input type="checkbox"/> Site <input type="checkbox"/> Structure <input type="checkbox"/> Object		<input type="checkbox"/> Public <input checked="" type="checkbox"/> Private <input type="checkbox"/> Both		Public Acquisition: <input type="checkbox"/> In Process <input type="checkbox"/> Being Considered	<input checked="" type="checkbox"/> Occupied <input type="checkbox"/> Unoccupied <input type="checkbox"/> Preservation work in progress	Yes: <input checked="" type="checkbox"/> Restricted <input type="checkbox"/> Unrestricted <input type="checkbox"/> No	
PRESENT USE (Check One or More as Appropriate)							
<input checked="" type="checkbox"/> Agricultural <input type="checkbox"/> Commercial <input type="checkbox"/> Educational <input type="checkbox"/> Entertainment		<input type="checkbox"/> Government <input type="checkbox"/> Industrial <input type="checkbox"/> Military <input type="checkbox"/> Museum		<input type="checkbox"/> Park <input checked="" type="checkbox"/> Private Residence <input type="checkbox"/> Religious <input type="checkbox"/> Scientific		<input type="checkbox"/> Transportation <input type="checkbox"/> Other (Specify) <u>Office</u>	<input type="checkbox"/> Comments _____ _____
<b>4. OWNER OF PROPERTY</b>							
OWNER'S NAME: Mrs Eric Lassotovitch et al							
STREET AND NUMBER: 9564 Baltimore National Pike							
CITY OR TOWN: Ellicott City				STATE: Maryland			
				21043			
<b>5. LOCATION OF LEGAL DESCRIPTION</b>							
COURTHOUSE, REGISTRY OF DEEDS, ETC.: Hall of Records							
STREET AND NUMBER: Howard County Courthouse							
CITY OR TOWN: Ellicott City				STATE: Maryland			
				21043			
Title Reference of Current Deed (Book & Pg. #): Tax Map #24, p. 810							
<b>6. REPRESENTATION IN EXISTING SURVEYS</b>							
TITLE OF SURVEY: Howard County Historic Sites Inventory							
DATE OF SURVEY: 1976 <input type="checkbox"/> Federal <input checked="" type="checkbox"/> State <input type="checkbox"/> County <input type="checkbox"/> Local							
DEPOSITORY FOR SURVEY RECORDS: Maryland Historical Trust							
STREET AND NUMBER: 21 State Circle							
CITY OR TOWN: Annapolis				STATE: Maryland			
				21401			

**7. DESCRIPTION**

CONDITION	(Check One)					
	<input checked="" type="checkbox"/> Excellent	<input type="checkbox"/> Good	<input type="checkbox"/> Fair	<input type="checkbox"/> Deteriorated	<input type="checkbox"/> Ruins	<input type="checkbox"/> Unexposed
	(Check One)			(Check One)		
	<input checked="" type="checkbox"/> Altered	<input type="checkbox"/> Unaltered	<input type="checkbox"/> Moved	<input checked="" type="checkbox"/> Original Site		

DESCRIBE THE PRESENT AND ORIGINAL (If known) PHYSICAL APPEARANCE

The original structure or east wing is a one and a half story brick house laid in English bond painted white. It is three bays wide and two bays deep. A French door entrance is located in the west bay with five-five lights surmounted by a four lite transom. Two first floor rectangular double-hung windows with six-over-six lites and shutters are located east of the entrance.

Three gabled roof dormers are set into the roof encasing double-hung rectangular windows with six-over-six lites flanked by columns which support frontons.

The west wing is a two story high, three bay wide, two bay deep brick structure whose south facade is laid in flemish bond, painted white. A chimney is inset into the west wall.

The south entrance is located in the east bay of this addition and opens into a large central hall with stairway on the south wall. A fan lite transom decorates the entrance. Proportional rectangular fenestration characterizes the building. The first and second floor windows have twelve-over-twelve lites decorated with splayed brick flat arched lintels.

The west wall contains two, third story windows with two-over-two lites with header brick lintels. This west brick wall is laid in English bond with a stone foundation.

The north wall of this west wing has two rectangular double-hung windows in the two west bays with twelve-over-twelve lites. The east bay contains a rectangular entrance door. All have flat arched lintels composed of stretcher bricks.

A double-hung window between the first and second floor in the east bay on the interior landing of the staircase, contains six-over-six lites. Above it is a window containing three-over-three lites. All have stone projecting flat sills.

The north wall of the east wing of the house laid in English bond contains three first floor windows with stretcher brick flat arched lintels.

A large dormer double window, each with six-over-six lites with fronton is inset into the roof line.

The east wall of the east wing laid in English bond, contains an entrance door in the north bay. South of this door is a first floor window with nine-over-nine lites.

Three second floor windows with wooden sills, flat arched stretcher brick lintels contain six-over-six lites.

Porches supported by columns linked with a wooden ballustrade run along the south wall of the house. Seven steps lead to these open porches.

\* In 1810 Colonel Charles Dorsey built the west wing addition to the house. A large central hall and staircase take up the east bay while a double living room lies off the west side of the hall. A large dining room takes up the entire south elevation of the original east wing.

(continued)

SEE INSTRUCTIONS

**SIGNIFICANCE**

PERIOD (Check One or More as Appropriate)

<input type="checkbox"/> Pre-Columbian	<input type="checkbox"/> 16th Century	<input checked="" type="checkbox"/> 18th Century	<input type="checkbox"/> 20th Century
<input type="checkbox"/> 15th Century	<input type="checkbox"/> 17th Century	<input checked="" type="checkbox"/> 19th Century	

SPECIFIC DATE(S) (If Applicable and Known) **1700's and 1810**

AREAS OF SIGNIFICANCE (Check One or More as Appropriate)

<input type="checkbox"/> Aboriginal	<input type="checkbox"/> Education	<input type="checkbox"/> Political	<input type="checkbox"/> Urban Planning
<input type="checkbox"/> Prehistoric	<input type="checkbox"/> Engineering	<input type="checkbox"/> Religion/Phi-	<input type="checkbox"/> Other (Specify)
<input type="checkbox"/> Historic	<input type="checkbox"/> Industry	osophy	_____
<input checked="" type="checkbox"/> Agriculture	<input type="checkbox"/> Invention	<input type="checkbox"/> Science	_____
<input checked="" type="checkbox"/> Architecture	<input checked="" type="checkbox"/> Landscape	<input type="checkbox"/> Sculpture	_____
<input type="checkbox"/> Art	<input type="checkbox"/> Architecture	<input type="checkbox"/> Social/Human-	_____
<input type="checkbox"/> Commerce	<input type="checkbox"/> Literature	itarian	_____
<input type="checkbox"/> Communications	<input type="checkbox"/> Military	<input type="checkbox"/> Theater	_____
<input type="checkbox"/> Conservation	<input type="checkbox"/> Music	<input type="checkbox"/> Transportation	_____

STATEMENT OF SIGNIFICANCE

Architecturally the house is significant for its fine proportions and well-integrated east and west wings, which is representative of the fine construction which went on during the 1700's & early 1800's in Howard County.

Historically the house is significant to Howard County for its connection with the Dorsey family and to the State for its connection to Governor Ligon.

Caleb Dorsey, of Thomas, lived in "Arcadia", once a part of the present Valley Meade subdivision off Route 40. He married Elizabeth Worthington, whose mother, nee Susannah Hood was sister of Zachariah Hood, the stamp agent of the revolution. Caleb Dorsey left four sons who surpassed him.

Caleb Dorsey, Jr. bought the homestead of "Patuxent John Dorsey" at Columbia. Charles W. Dorsey bought the western part of the same tract and built the old brick house upon the pike west of "Arcadia". He married Mary Tolley Worthington whose daughters Sally Ann and Mary Tolley became the wives of Governor Ligon. Charles and Mary resided in the Old Brick house and began raising their family there. Sally Ann was born in 1817 and Caleb in 1819. Three years later Colonel C.W. Dorsey bought White Hall and there Elizabeth was born in 1823, Mary in 1825 and Comfort in 1831. Sally and Mary became the wives of Governor Ligon.

SEE INSTRUCTIONS

**9. MAJOR BIBLIOGRAPHICAL REFERENCES**

Warfield, J.D. Founders of Ann Arundel and Howard Counties, Maryland.  
Baltimore, 1973

Interview with Mr. & Mrs. Lassotovitch at the Old Brick House,  
July 14, 1976. 265-2114

**10. GEOGRAPHICAL DATA**

LATITUDE AND LONGITUDE COORDINATES DEFINING A RECTANGLE LOCATING THE PROPERTY				O R	LATITUDE AND LONGITUDE COORDINATES DEFINING THE CENTER POINT OF A PROPERTY OF LESS THAN TEN ACRES				
CORNER	LATITUDE				LONGITUDE				
	Degrees	Minutes	Seconds	Degrees	Minutes	Seconds	Degrees	Minutes	Seconds
NW	°	'	"	°	'	"	°	'	"
NE	°	'	"	°	'	"	°	'	"
SE	°	'	"	°	'	"	°	'	"
SW	°	'	"	°	'	"	°	'	"

APPROXIMATE ACREAGE OF NOMINATED PROPERTY:

Acreage Justification:

Please see Tax Map #24 p. 810 W 7/78

12 Acres

SEE INSTRUCTIONS

**11. FORM PREPARED BY**

NAME AND TITLE: Cleora B. Thompson, Archivist		
ORGANIZATION Howard County - Comprehensive Planning Section	DATE	
STREET AND NUMBER: 3450 Court House Drive		
CITY OR TOWN: Ellicott City	STATE Maryland	21043

**12. State Liaison Officer Review: (Office Use Only)**

Significance of this property is:

National  State  Local

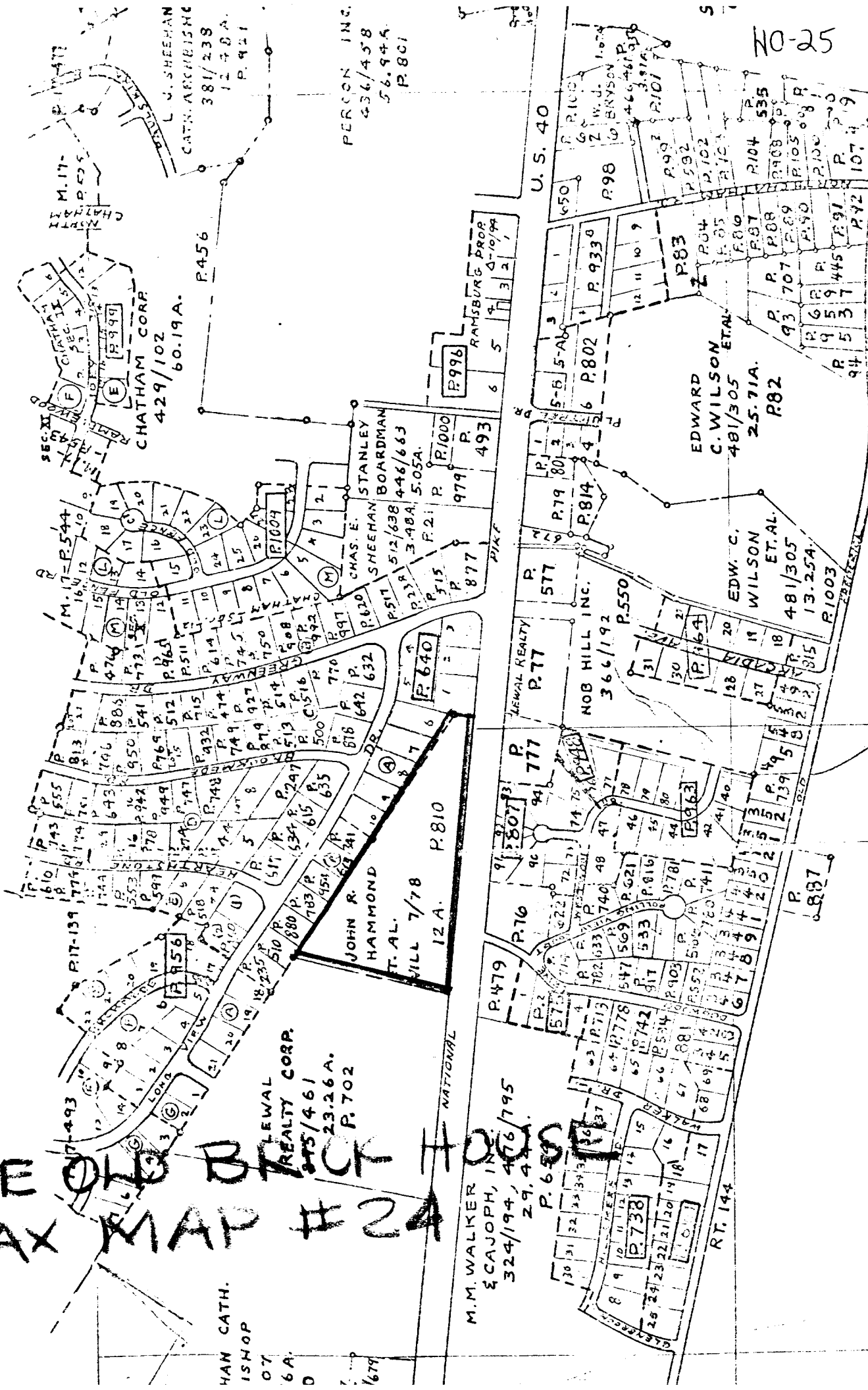
\_\_\_\_\_  
Signature

Description - Brick House on the Pike (continued)

\* In 1908 a second floor was added to the original structure of the house, the east wing. What formerly had been a one story wing now became a one and a half story wing, enlarged and improved by Mr. Edward Hammond.



# THE OLD BRICK TAX MAP # 2



MAN CATH.  
ISHOP  
07  
6A.  
D

LEWAL  
REALTY CORP.  
875/461  
23.26A.  
P. 702

PERSON INC.  
436/458  
56.94A.  
P. 801

M.M. WALKER  
& CAJOP, INC.  
324/194, 406/795  
29.4A.  
P. 650

10-25

RT. 144

U.S. 40

NATIONAL

CHATHAM CORP  
429/102  
60.19A.

STANLEY BOARDMAN  
CHAS. E. SHEEHAN  
512/638  
446/663  
3.48A.  
5.05A.  
P. 21  
P. 21  
P. 21

EDWARD  
C. WILSON ET AL.  
481/305  
25.71A.  
R82

EDW. C.  
WILSON  
ET AL.  
481/305  
13.25A.  
R1003

RAMSBURG PROP  
P. 996  
6 5 4 3 2 1

JOHN R.  
HAMMOND  
T. AL.  
WILL 7/78  
12A.  
P. 810

NOB HILL INC.  
366/192  
P. 550

P. 479

P. 738

P. 807

P. 887

P. 933

P. 802

P. 814

P. 577

P. 777

P. 777

P. 777

P. 777

P. 777

P. 777

P. 933

P. 802

P. 814

P. 577

P. 777

P. 777

P. 777

P. 777

P. 777

P. 777

P. 933

P. 802

P. 814

P. 577

P. 777

P. 777

P. 777

P. 777

P. 777

P. 777

P. 933

P. 802

P. 814

P. 577

P. 777

P. 777

P. 777

P. 777

P. 777

P. 777

P. 933

P. 802

P. 814

P. 577

P. 777

P. 777

P. 777

P. 777

P. 777

P. 777

P. 933

P. 802

P. 814

P. 577

P. 777

P. 777

P. 777

P. 777

P. 777

P. 777

P. 933

P. 802

P. 814

P. 577

P. 777

P. 777

P. 777

P. 777

P. 777

P. 777

P. 933

P. 802

P. 814

P. 577

P. 777

P. 777

P. 777

P. 777

P. 777

P. 777

P. 933

P. 802

P. 814

P. 577

P. 777

P. 777

P. 777

P. 777

P. 777

P. 777

P. 933

P. 802

P. 814

P. 577

P. 777

P. 777

P. 777

P. 777

P. 777

P. 777

P. 933

P. 802

P. 814

P. 577

P. 777

P. 777

P. 777

P. 777

P. 777

P. 777

P. 933

P. 802

P. 814

P. 577

P. 777

P. 777

P. 777

P. 777

P. 777

P. 777

P. 933

P. 802

P. 814

P. 577

P. 777

P. 777

P. 777

P. 777

P. 777

P. 777

P. 933

P. 802

P. 814

P. 577

P. 777

P. 777

P. 777

P. 777

P. 777

P. 777

P. 933

P. 802

P. 814

P. 577

P. 777

P. 777

P. 777

P. 777

P. 777

P. 777

P. 933

P. 802

P. 814

P. 577

P. 777

P. 777

P. 777

P. 777

P. 777

P. 777

P. 933

P. 802

P. 814

P. 577

P. 777

P. 777

P. 777

P. 777

P. 777

P. 777

P. 933

P. 802

P. 814

P. 577

P. 777

P. 777

P. 777

P. 777

P. 777

P. 777

P. 933

P. 802

P. 814

P. 577

P. 777

P. 777

P. 777

P. 777

P. 777

P. 777

P. 933

P. 802

P. 814

P. 577

P. 777

P. 777

P. 777

P. 777

P. 777

P. 777

P. 933

P. 802

P. 814

P. 577

P. 777

P. 777

P. 777

P. 777

P. 777

P. 777

P. 933

P. 802

P. 814

P. 577

P. 777

P. 777

P. 777

P. 777

P. 777

P. 777

P. 933

P. 802

P. 814

P. 577

P. 777

P. 777

P. 777

P. 777

P. 777

P. 777

P. 933

P. 802

P. 814

P. 577

P. 777

P. 777

P. 777

P. 777

P. 777

P. 777

P. 933

P. 802

P. 814

P. 577

P. 777

P. 777

P. 777

P. 777

P. 777

P. 777

P. 933

P. 802

P. 814

P. 577

P. 777

P. 777

P. 777

P. 777

P. 777

P. 777

P. 933

P. 802

P. 814

P. 577

P. 777

P. 777

P. 777

P. 777

P. 777

P. 777

P. 933

P. 802

P. 814

P. 577

P. 777

P. 777

P. 777

P. 777

P. 777

P. 777

P. 933

P. 802

P. 814

P. 577

P. 777

P. 777

P. 777

P. 777

P. 777

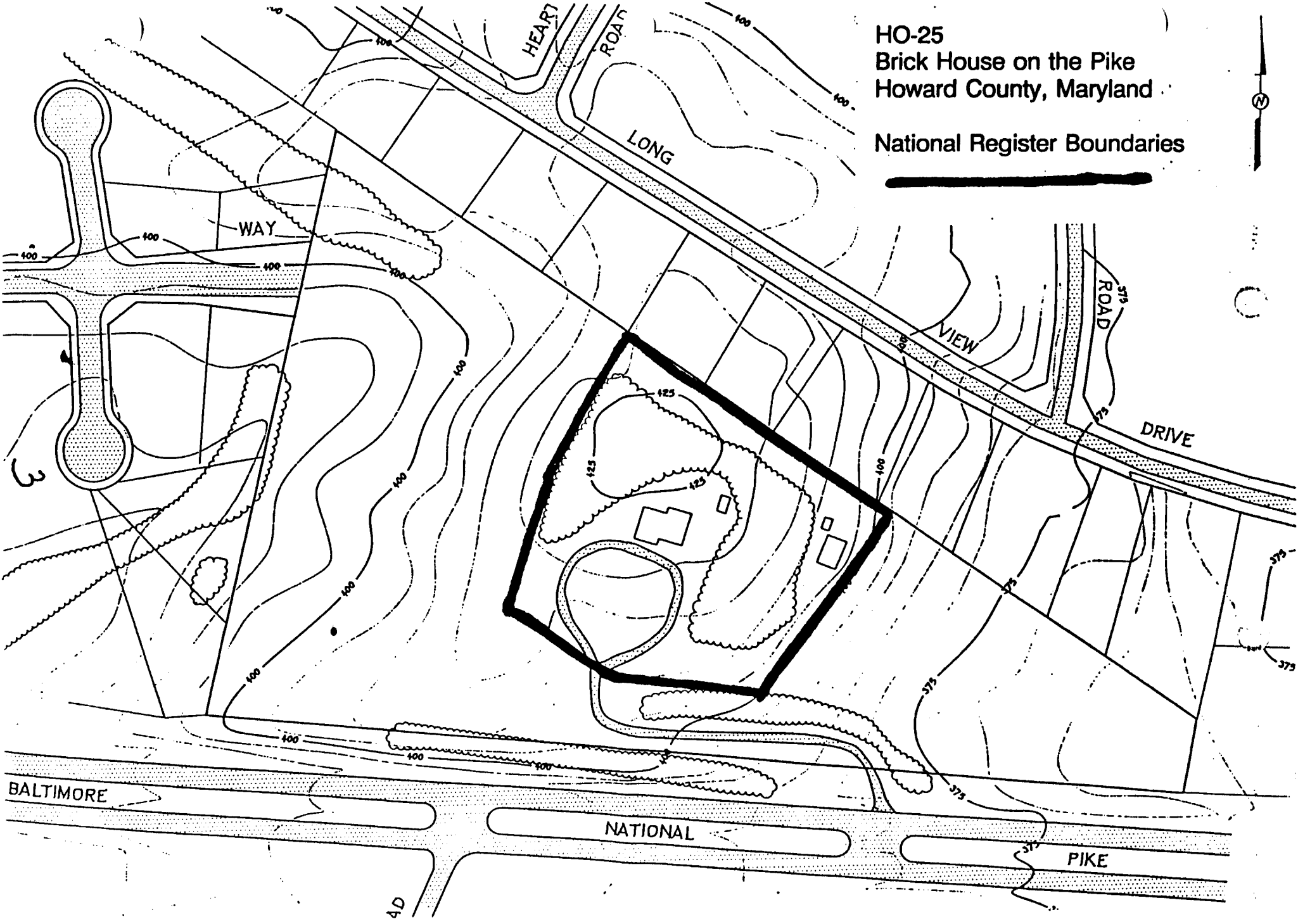
P. 777

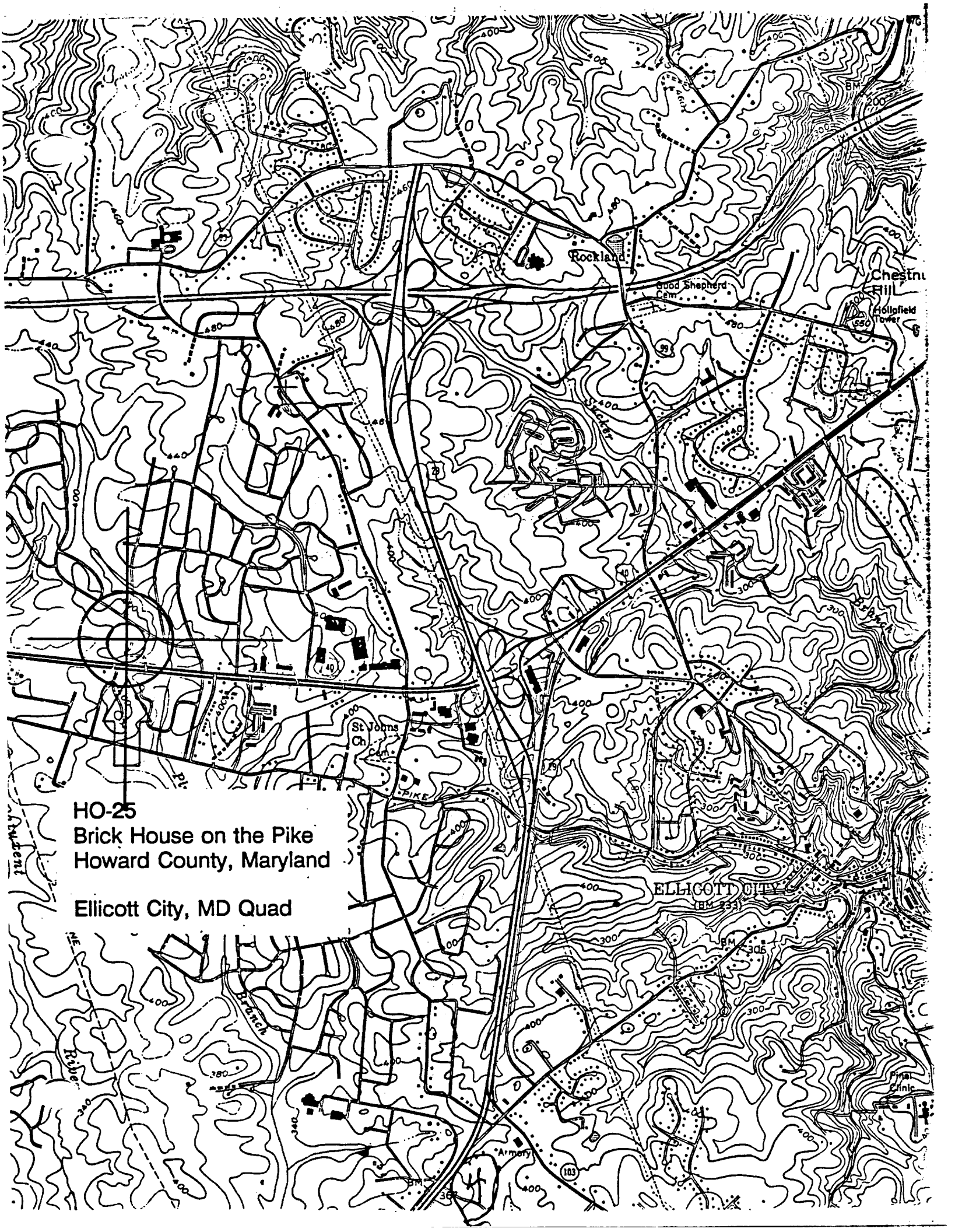
P. 933

P. 802

HO-25  
Brick House on the Pike  
Howard County, Maryland

National Register Boundaries



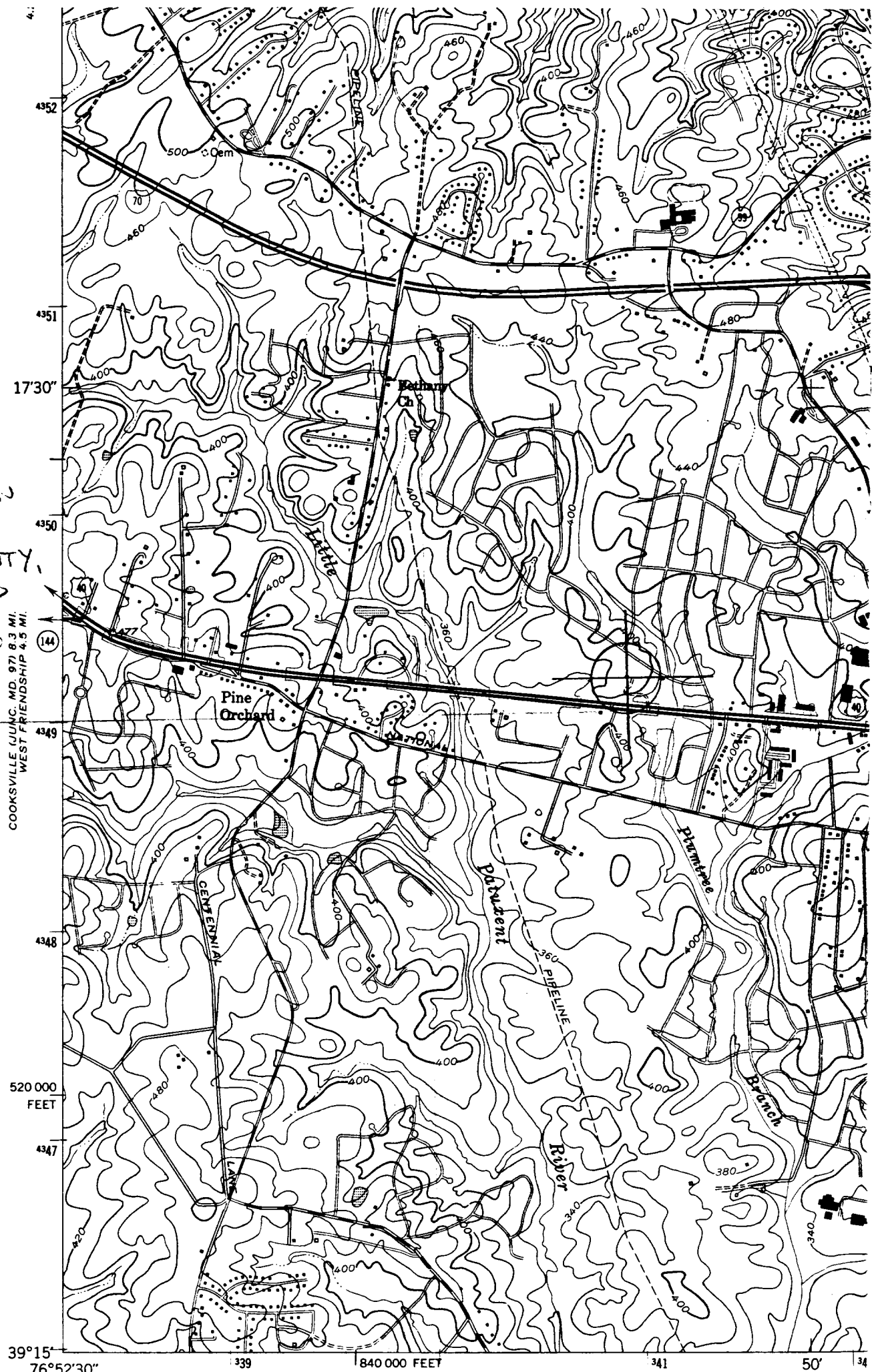


HO-25  
Brick House on the Pike  
Howard County, Maryland

Ellicott City, MD Quad

HO-25  
 BRICK HOUSE ON  
 THE PIKE  
 HOWARD COUNTY,  
 MARYLAND

8-340960-4349170



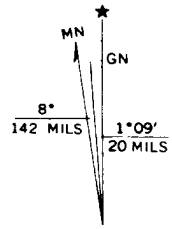
(CLARKSVILLE)  
 5662 III NW

Mapped by the Army Map Service  
 Edited and published by the Geological Survey  
 Control by USGS and USC&GS

Topography from aerial photographs by photogrammetric methods. Aerial photographs taken 1943  
 Culture revised by the Geological Survey 1953

Polyconic projection. 1927 North American datum  
 10,000-foot grid based on Maryland coordinate system  
 1000-meter Universal Transverse Mercator grid ticks, zone 18, shown in blue

Revisions shown in purple compiled by the Geological Survey from aerial photographs taken 1966 and 1974. This information not field checked  
 Purple tint indicates extension of urban areas



UTM GRID AND 1974 MAGNETIC NORTH DECLINATION AT CENTER OF SHEET



H0-25

BRICK HOUSE ON THE PIKE

ELLICOTT CITY, MD

PETER E. KURTZE, 8/94

NEG AT MD SHPO

VIEW FROM SE

#1 OF 7



HO-25

BRICK HOUSE ON THE PIKE

ELLICOTT CITY, MD

PETER E. KURTZE, 8/94

NEG AT MD SHPO

SOUTH FACADE

# 2 OF 7





H0-25

BRICK HOUSE ON THE PIKE

ELLCOTT CITY, MD

PETER E. KURTZE, 8/94

NEG AT MD SHPO

NORTH ELEVATION

# 3 OF 7



140-25

BRICK HOUSE ON THE PIKE

ELLCOTT CITY, MD

PETER E. KURTZE, 8/94

NEG AT MD SHPO

MANTEL, SW ROOM

# 4 OF 7



HO-25

BRICK HOUSE ON THE PIKE

ELLCOTT CITY, MD

PETER E. KURTZE, 8/94

NEG AT MD SHPO

STAIR PASSAGE, VIEW FROM SOUTH

#5 OF 7



H0-25

BRICK HOUSE ON THE PIKE

ELLCOTT CITY, MD

PETER E. KURTZE, 8/94

NEG AT MD SHPO

STONE STABLE AND FRAME GRANARY | CORN CRIB  
VIEW FROM SW

# 6 OF 7





H0-25

BRICK HOUSE ON THE PIKE

ELLICOTT CITY, MD

PETER E. KURTZE, 8/94

NEG AT MD SHPO

OUTBUILDINGS, VIEW FROM S

#7 OF 7



HO-25 DIST 2  
BRICK HSE ON THE PIKE  
MHT ④



H0.25

568A

889 6/72

Brick House on the Pike



Ho. 25

568A

883 6/72

Brick House on the Pike - Barn