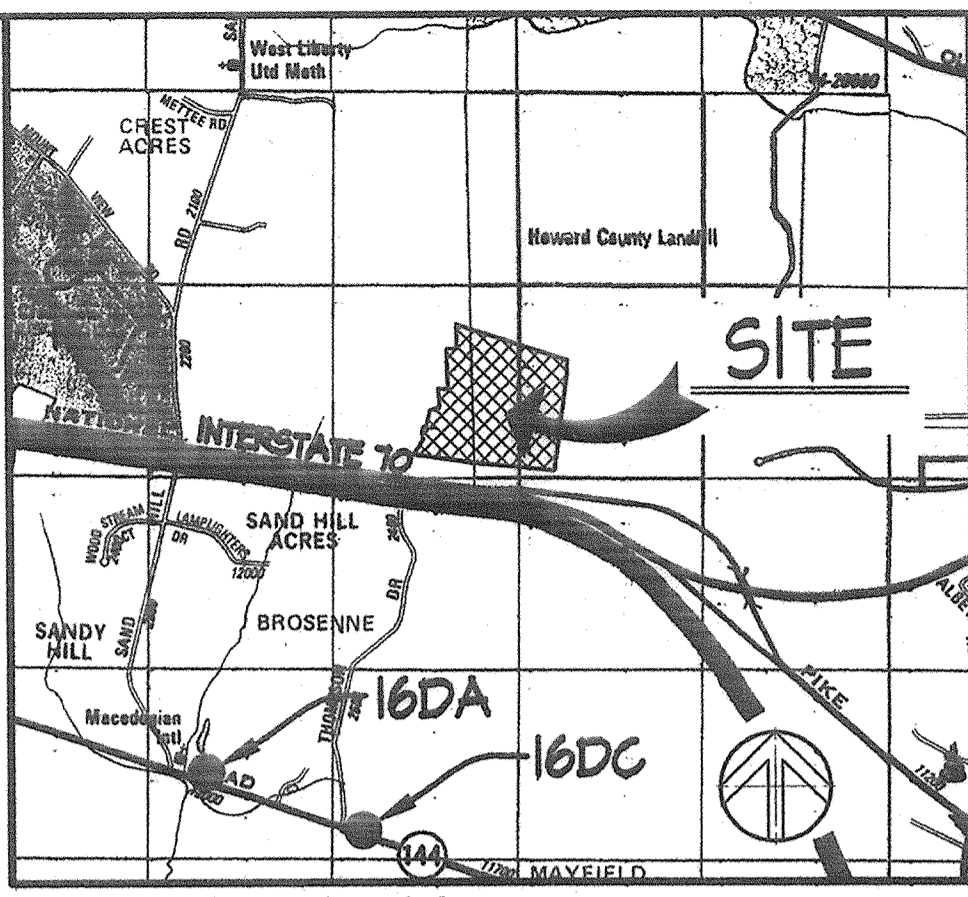
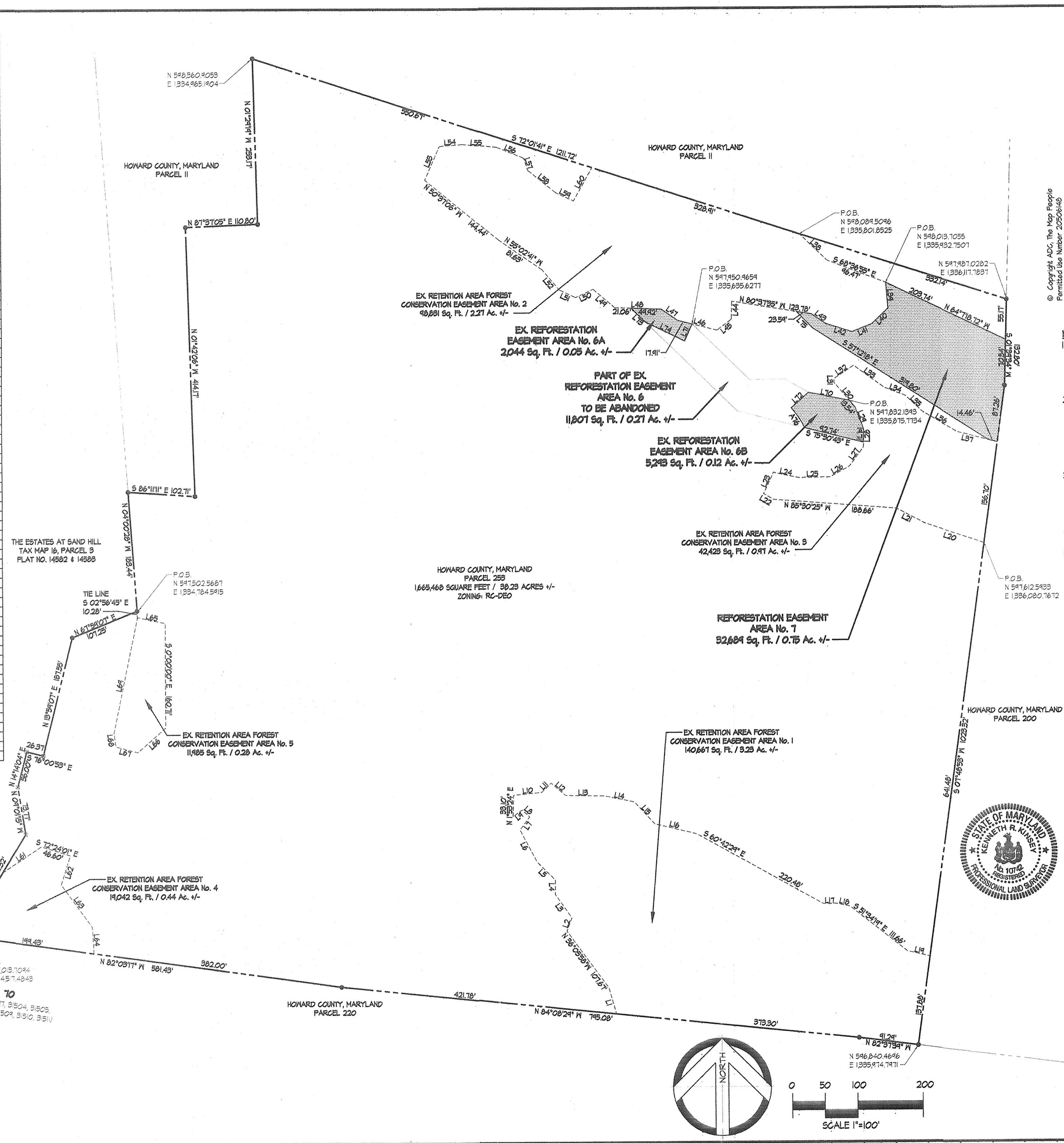


LINE TABLE

LINE	BEARING	DISTANCE
L1	N15°41'28"W	42.55'
L2	N19°50'23"E	22.10'
L3	N84°48'54"W	43.61'
L4	N00°31'45"E	21.93'
L5	N44°46'50"W	40.00'
L6	N21°56'41"W	55.03'
L7	N86°20'52"E	25.18'
L8	N47°16'04"W	15.86'
L9	N53°01'23"W	11.35'
L10	N84°20'04"E	43.52'
L11	N43°03'55"E	20.18'
L12	S44°08'52"E	24.17'
L13	S84°01'43"E	54.74'
L14	S78°14'20"E	46.19'
L15	S42°52'04"E	45.90'
L16	S76°16'23"E	66.76'
L17	N10°00'00"E	21.11'
L18	S71°28'01"E	20.86'
L19	S76°54'45"E	35.17'
L20	N71°23'01"W	45.15'
L21	N61°51'21"W	44.57'
L22	N84°55'54"W	17.81'
L23	N25°12'58"E	36.02'
L24	S71°45'51"E	34.34'
L25	N84°02'03"E	47.83'
L26	N61°25'00"E	34.34'
L27	N86°31'08"E	36.19'
L28	N01°08'02"E	21.21'
L29	N20°50'51"W	36.31'
L30	N84°54'34"W	44.43'
L31	N00°00'00"E	6.46'
L32	N56°18'02"E	35.42'
L33	S84°01'17"E	53.22'
L34	S88°47'43"E	34.25'
L35	S41°04'01"E	36.77'
L36	S84°48'21"E	81.05'
L37	S75°22'41"E	62.78'
L38	S50°56'02"E	56.51'
L39	S04°40'06"E	46.00'
L40	S46°19'19"W	34.44'
L41	S68°17'52"W	32.80'
L42	N12°24'06"W	42.24'
L43	N55°04'31"W	26.41'
L44	S01°33'20"W	21.73'
L45	S52°44'43"W	21.72'
L46	N75°54'55"W	61.42'
L47	N84°51'40"W	30.65'
L48	N88°02'48"W	70.98'
L49	N44°04'10"W	43.46'
L50	S64°48'31"W	24.94'
L51	N64°10'15"W	27.16'
L52	N81°41'44"W	40.93'
L53	N23°46'28"E	56.44'
L54	N25°11'25"E	35.06'
L55	S84°48'01"E	52.37'
L56	S68°11'24"E	45.17'
L57	S17°55'05"E	19.66'
L58	S81°06'20"E	55.04'
L59	S65°20'11"E	24.80'
L60	N24°17'31"E	38.23'
L61	N55°51'51"E	71.67'
L62	S17°55'54"W	46.74'
L63	S85°46'54"E	80.84'
L64	S03°04'44"E	40.13'
L65	S78°17'03"E	43.40'
L66	S48°22'50"W	51.23'
L67	N75°01'11"W	34.42'
L68	N07°55'26"W	21.17'
L69	N11°42'51"E	181.30'
L70	N78°22'40"W	63.71'
L71	N23°52'36"E	28.53'
L72	S48°31'03"W	35.61'
L73	S45°24'21"E	24.96'
L74	S63°44'03"E	61.43'
L75	N48°32'04"W	34.50'

A76 RADIUS: 184.24'
 ARC LENGTH: 36.48'
 BEARING: 533°46'24"E
 CHORD LENGTH: 36.87'

INTERSTATE 70
 (SRC Plots 3146, 3147, 31504, 31505, 31506, 31507, 31508, 31509, 31510, 31511)



NOTES

- THIS PLAT IS AN AMENDMENT TO THE PLAT ENTITLED "PUBLIC SAFETY TRAINING CENTER CAPITAL PROJECT NO. C-0182 SDP-03-036 PLAT FOR GRANT OF FOREST CONSERVATION EASEMENTS TO HOWARD COUNTY MARYLAND HOWARD COUNTY, MARYLAND DATED FEBRUARY 11, 2003 BY WHITMAN, REQUIARD AND ASSOCIATES FILED AS PLAT MDR 15834.
- THE FOREST CONSERVATION EASEMENTS SHOWN ON THIS PLAT HAVE BEEN ESTABLISHED TO FULFILL THE REQUIREMENTS OF THE PUBLIC SAFETY TRAINING CENTER, CAPITAL PROJECT NO. C-0182 IN ACCORDANCE WITH SECTION 16.1200 OF THE HOWARD COUNTY FOREST CONSERVATION ACT. NO CLEARING, GRADING OR CONSTRUCTION IS PERMITTED WITHIN THE FOREST CONSERVATION EASEMENTS, HOWEVER, FOREST MANAGEMENT PRACTICES AS DEFINED IN THE DEED OF FOREST CONSERVATION ARE ALLOWED.
- THE PURPOSE OF THIS PLAT OF FOREST CONSERVATION EASEMENT IS TO ESTABLISH 7.37 ACRES OF FOREST CONSERVATION EASEMENTS (16.45 ACRES OF FOREST RETENTION AND 0.92 ACRES OF REFORESTATION) TO FULFILL THE FOREST CONSERVATION OBLIGATION FOR THE PUBLIC SAFETY TRAINING CENTER CAPITAL PROJECT NO. C-0182.
- THE SUBJECT PROPERTY IS ZONED RC-DEO, PER THE OCTOBER 18, 1993 COMPREHENSIVE ZONING PLAN.
- COORDINATES SHOWN HEREON ARE BASED ON MARYLAND COORDINATE SYSTEM, NAD83 AS PROJECTED BY HOWARD COUNTY GEODETIC CONTROL STATIONS 16DA & 16DC.
- DENOTES A REBAR & CAP SET FROM PREVIOUS PLAT MDR 15834
 ○ DENOTES A CONCRETE MONUMENT FOUND FROM PREVIOUS PLAT MDR 15834
- SUBSEQUENT TO THE RECORDATION OF THE AMENDED PLAT AN AMENDED DECLARATION OF FOREST CONSERVATION EASEMENT WILL BE RECORDED.
- EASEMENT AREAS NO. 6A AND NO. 6B ARE REMAINDER OF FORMER EASEMENT AREA NO. 6 WHICH HAS BEEN RECONFIGURED WITH THE AMENDED PLAT.

OWNERS CERTIFICATE
 HOWARD COUNTY DEPARTMENT OF PUBLIC WORKS, OWNER OF THE PROPERTY SHOWN AND DESCRIBED HEREON, HEREBY ADOPTS THIS PLAN IN CONSIDERATION OF THE APPROVAL OF THIS PLAT OF FOREST CONSERVATION EASEMENT BY THE DEPARTMENT OF PLANNING AND ZONING, TO ESTABLISH THE REQUIRED FOREST CONSERVATION EASEMENTS.
 James M. Irvin, Director DPW DATE 8/15/06
 Karen N. Watkins, DATE 8/15/06

SURVEYORS CERTIFICATE
 I HEREBY CERTIFY THAT THE FINAL EASEMENT PLAT SHOWN HEREON IS CORRECT, TO THE BEST OF MY PROFESSIONAL INFORMATION, KNOWLEDGE, AND BELIEF, THAT IT DEFINES FOREST CONSERVATION EASEMENTS ON A PORTION OF A PARCEL OF GROUND CONVEYED BY HOWARD COUNTY, MARYLAND TO HOWARD COUNTY MARYLAND BY A DEED OF ADJOINER TRANSFER DATED NOVEMBER 18, 2002 AND RECORDED AMONG THE LAND RECORDS OF HOWARD COUNTY, MARYLAND IN LIBER 6684 AT FOLIO 819.
 Kenneth R. Kinsey, Professional Land Surveyor No. 10742, DATE 8/15/06

APPROVED: HOWARD COUNTY DEPT. OF PLANNING & ZONING
 David P. Leyle, Director, DATE 8/22/06

RECORDED AS PLAT 18518 ON 8-24-06 2006, AMONG THE LAND RECORDS OF HOWARD COUNTY, MARYLAND.

AMENDED PLAT FOR GRANT OF FOREST CONSERVATION EASEMENTS TO HOWARD COUNTY MARYLAND

SITE RESOURCES
 INCORPORATED
 Comprehensive Land Planning & Site Design Services
 14315 Laurelville Pike • Phoenix, Maryland 21131
 (410) 683-3388 • fax (410) 683-3383

Public Safety Training Center
 PROPERTY OF
 HOWARD COUNTY,
 MARYLAND
 TAX MAP 16, PARCEL 253
 3rd ELECTION DIST, HOWARD COUNTY, MD

DATE: AUGUST 15, 2006 SCALE: 1" = 100'

SDP-06-110 FC

M:\Projects\proj\3103\153-HowardCo PublicSafetyTraining\Amended_Forest_Conservation_Plat.dwg, 8/14/2006 12:31:40 PM, Copyright, Site Resources, Inc.