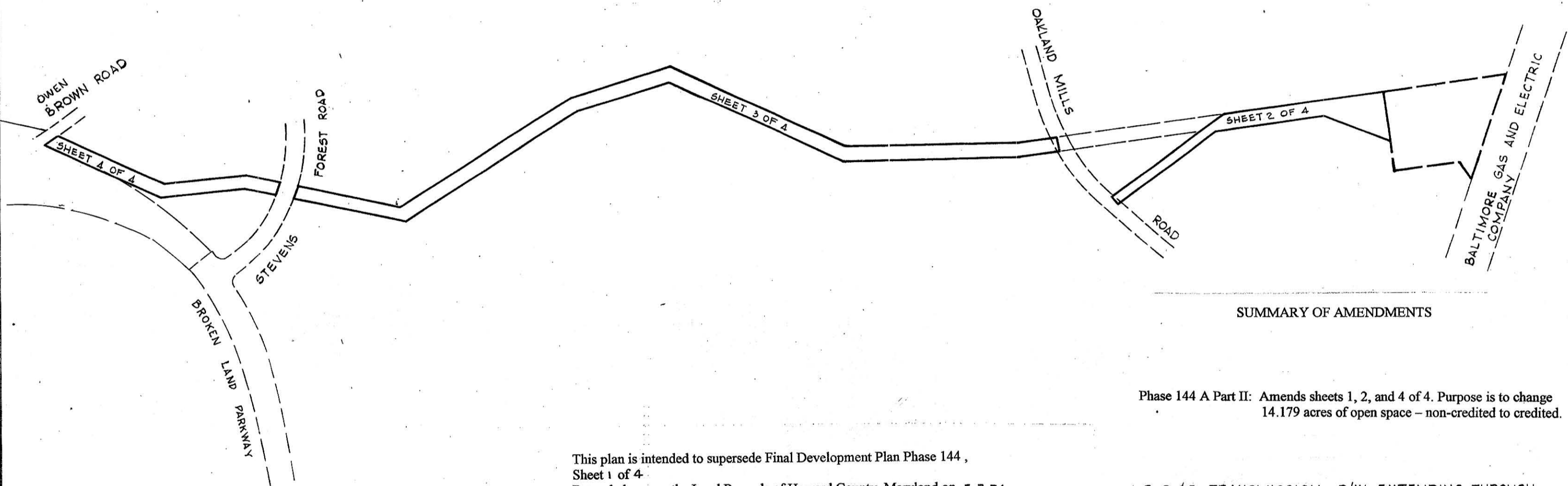
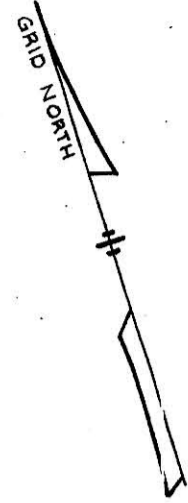


VICINITY MAP
Scale: 1"=3,000'



SUMMARY OF AMENDMENTS

Phase 144 A Part II: Amends sheets 1, 2, and 4 of 4. Purpose is to change 14.179 acres of open space - non-credited to credited.

B.G. & E. TRANSMISSION R/W EXTENDING THROUGH THE VILLAGE OF OWEN BROWN

RECORDED PLAT NO. 3057-A-1719
ON SEPTEMBER 2, 1998 AMONG THE
AND RECORDS OF HOWARD COUNTY, MD.

This plan is intended to supersede Final Development Plan Phase 144, Sheet 1 of 4.
Recorded among the Land Records of Howard County, Maryland on 5-7-74
As Plat Book 28 Folio 4

144	5-7-74	28 FOLIO 4 THRU 7
PHASE OR AMENDMENT	DATE	PLAT
RECORDING REFERENCE		

PREPARED AS SHEETS 1 THROUGH 4 IN ACCORDANCE WITH THE ZONING REGULATIONS OF HOWARD COUNTY ADOPTED: OCTOBER 18, 1993



Robert H. Berger
DATE 4/24/98

BOARD OF COUNTY COMMISSIONERS CASE B.C.C. 412 RESOLUTION APPROVED 8-10-65
AMENDED B.C.C. CASE 507 RESOLUTION APPROVED 11-4-68
AMENDED Z.B. CASE 606 RESOLUTION APPROVED 11-22-72
AMENDED Z.B. CASE 644 RESOLUTION APPROVED 1-7-74
AMENDED Z.B. CASE 693 RESOLUTION APPROVED 12-20-76
AMENDED Z.B. CASE 817 RESOLUTION APPROVED 9-9-86
AMENDED Z.B. CASE 918 RESOLUTION APPROVED 3-17-91
AMENDED Z.B. CASE 939 RESOLUTION APPROVED 11-19-92
AMENDED Z.B. CASE 969 RESOLUTION APPROVED 10-23-95

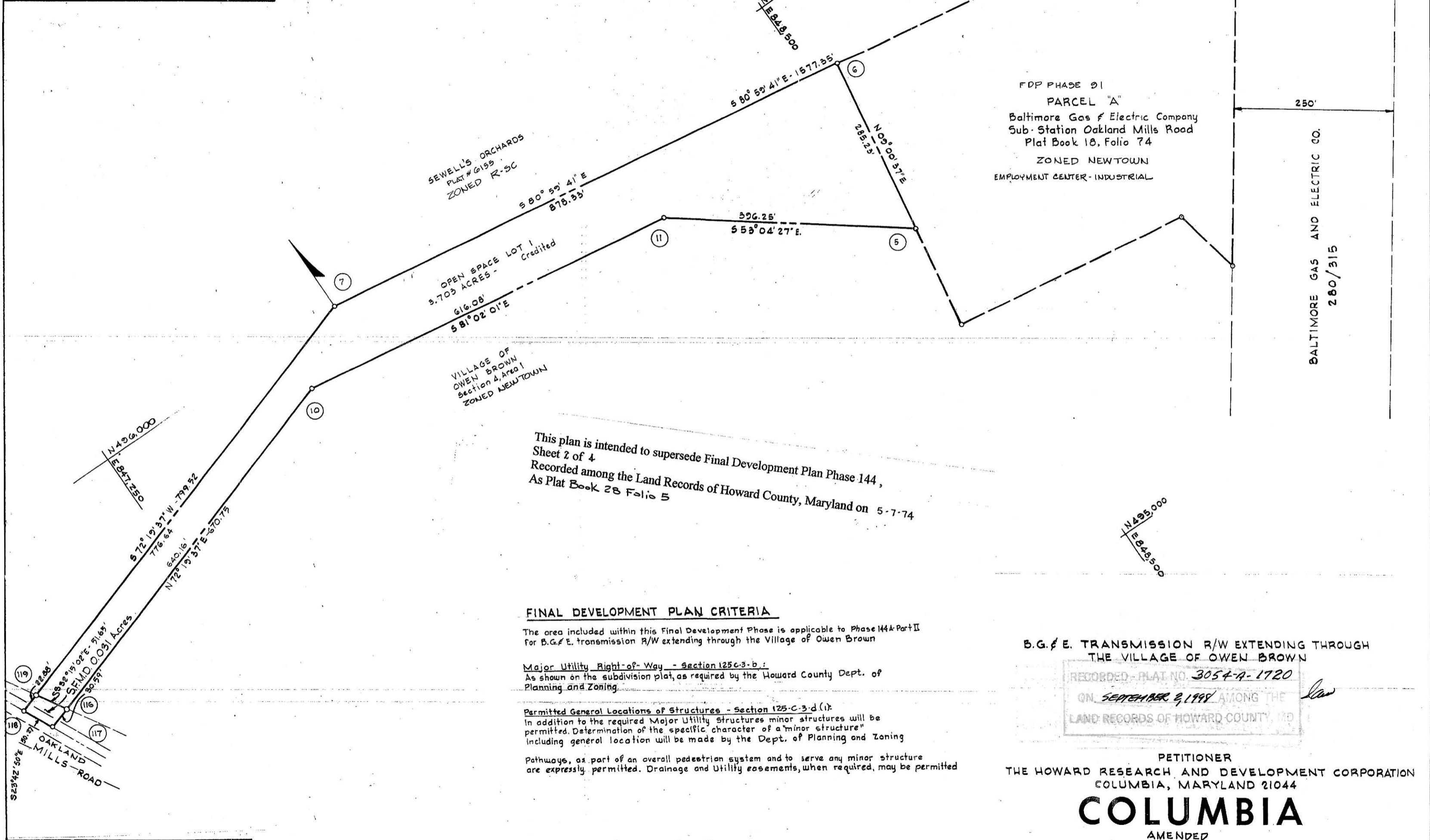
HOWARD COUNTY PLANNING BOARD

Robert H. Berger 8/27/98
H.C.P.B. EXEC. SECRETARY DATE VICE-CHAIRMAN DATE

PETITIONER
THE HOWARD RESEARCH AND DEVELOPMENT CORPORATION
COLUMBIA, MARYLAND 21044
COLUMBIA
AMENDED
FINAL DEVELOPMENT PLAN PHASE 144 A - PART II
6TH ELECTION DISTRICT HOWARD COUNTY, MD.
SCALE 1"=400' SHEET 1 OF 4

COORDINATE SCHEDULE

No.	North	East
1		
2		
119	495,760.18	846,938.35
116	495,716.50	846,965.92
5	495,576.77	848,501.18
6	495,858.48	848,545.85
7	495,995.96	847,678.34
118	495,753.24	846,916.56
117	495,707.21	846,936.77
10	495,910.84	847,575.86
11	495,814.83	848,184.41



This plan is intended to supersede Final Development Plan Phase 144, Sheet 2 of 4 Recorded among the Land Records of Howard County, Maryland on 5-7-74 As Plat Book 28 Folio 5

FINAL DEVELOPMENT PLAN CRITERIA

The area included within this Final Development Phase is applicable to Phase 144A Part II for B.G. & E. transmission R/W extending through the Village of Owen Brown

Major Utility Right-of-Way - Section 125c-3-b.1
As shown on the subdivision plat, as required by the Howard County Dept. of Planning and Zoning.

Permitted General Locations of Structures - Section 125c-3-d(1)
In addition to the required Major Utility Structures minor structures will be permitted. Determination of the specific character of a "minor structure" including general location will be made by the Dept. of Planning and Zoning

Pathways, as part of an overall pedestrian system and to serve any minor structure are expressly permitted. Drainage and Utility easements, when required, may be permitted

B.G. & E. TRANSMISSION R/W EXTENDING THROUGH THE VILLAGE OF OWEN BROWN

RECORDED - PLAT NO. 3054-A-1720
ON SEPTEMBER 2, 1998 AMONG THE
LAND RECORDS OF HOWARD COUNTY, MD

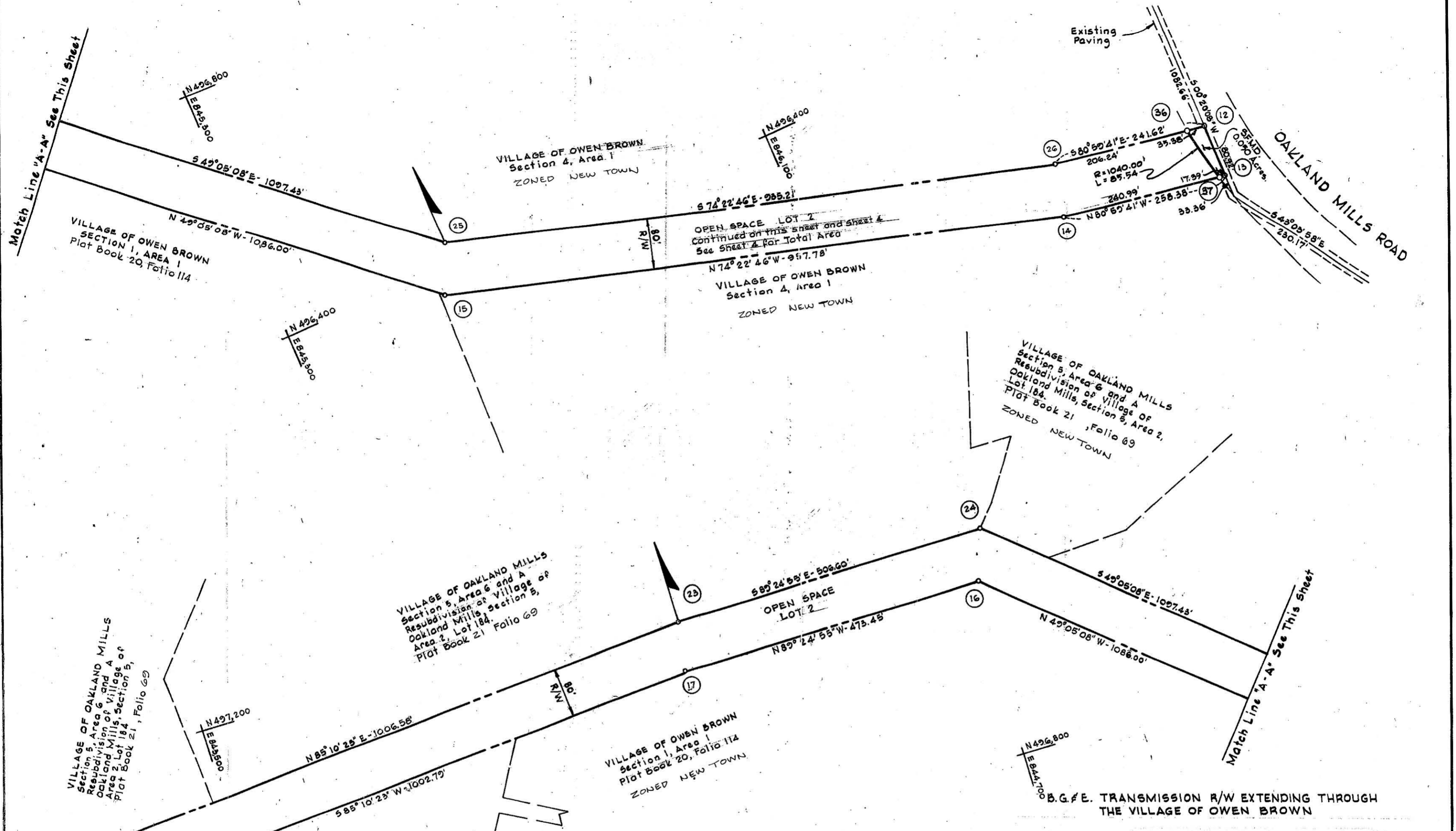
PETITIONER
THE HOWARD RESEARCH AND DEVELOPMENT CORPORATION
COLUMBIA, MARYLAND 21044

COLUMBIA

AMENDED
FINAL DEVELOPMENT PLAN PHASE 144 A PART-II
6TH ELECTION DISTRICT HOWARD COUNTY, MD.

SCALE 1"=100' SHEET 2 OF 4

Land Use	Acres
OPEN SPACE - CREDITED	12.179
S.F.M.D. (Roadway)	0.081
TOTAL	12.260



COORDINATE SCHEDULE

No.	North	East
12	496,146.47	846,728.72
13	496,068.55	846,728.19
14	496,105.99	846,473.00
15	496,363.89	845,550.59
16	497,075.14	844,729.91
17	497,079.98	844,256.49
23	497,160.02	844,253.52
24	497,154.85	844,760.09
25	496,436.11	845,589.41
26	496,184.29	846,490.08
36	496,152.00	846,693.77
37	496,068.26	846,711.07

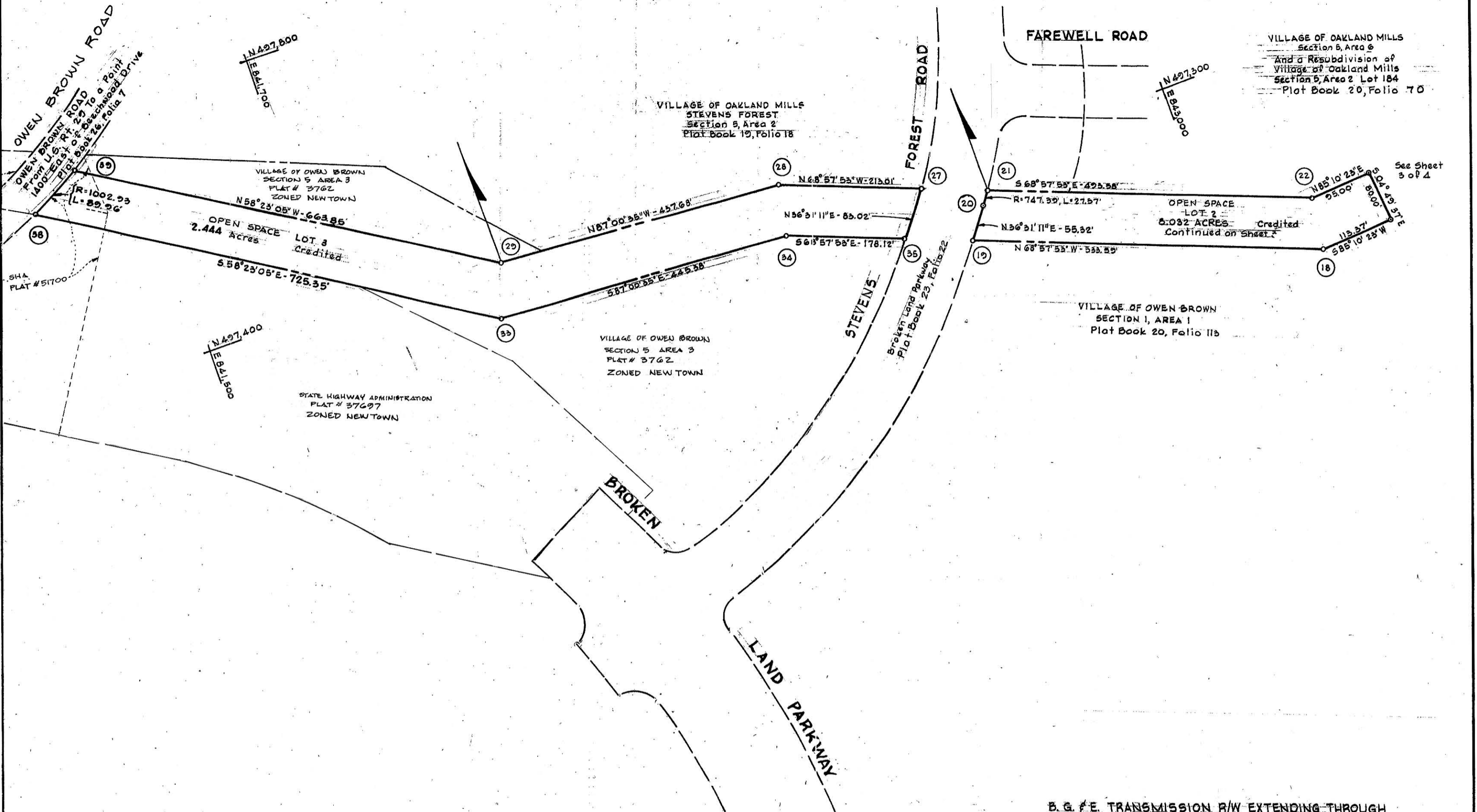
RECORDED - PLAT NO. 3054-A-1721 *Law*
 ON SEPTEMBER 2, 1998 AMONG THE
 LAND RECORDS OF HOWARD COUNTY, MD
 PETITIONER

THE HOWARD RESEARCH AND DEVELOPMENT CORPORATION
 COLUMBIA, MARYLAND 21044

COLUMBIA

FINAL DEVELOPMENT PLAN PHASE 144 A PART II
 6TH ELECTION DISTRICT HOWARD COUNTY, MD.
 SCALE 1"=100'
 SHEET 3 OF 4

This plan is intended to supersede Final Development Plan Phase 144, Sheet 3 of 4
 Recorded among the Land Records of Howard County, Maryland on 5-7-74
 As Plat Book 23 Folio 6



COORDINATE SCHEDULE		
No.	North	East
18	496,986.05	843,144.29
19	497,177.58	842,646.25
20	497,222.04	842,675.18
21	497,244.49	842,695.16
22	497,067.32	843,155.85
27	497,281.55	842,508.80
28	497,353.01	842,399.99
29	497,380.84	841,962.90
33		
34	497,302.01	841,938.36
35	497,278.77	842,383.14
38	497,214.84	842,549.39
38	497,682.25	841,320.66
39	497,728.84	841,397.58

B.G. & E. TRANSMISSION R/W EXTENDING THROUGH THE VILLAGE OF OWEN BROWN

RECORDED - PLAT NO. 3054-A-1722
 ON SEPTEMBER 2, 1998 AMONG THE
 LAND RECORDS OF HOWARD COUNTY, MD

PETITIONER
 THE HOWARD RESEARCH AND DEVELOPMENT CORPORATION
 COLUMBIA, MARYLAND 21044

COLUMBIA

FINAL DEVELOPMENT PLAN PHASE 144 A PART II
 6TH ELECTION DISTRICT HOWARD COUNTY, MD.
 SCALE 1"=100' SHEET 4 OF 4

This plan is intended to supersede Final Development Plan Phase 144,
 Sheet 4 of 4
 Recorded among the Land Records of Howard County, Maryland on 5-7-74
 As Plat Book 28 Folio 7