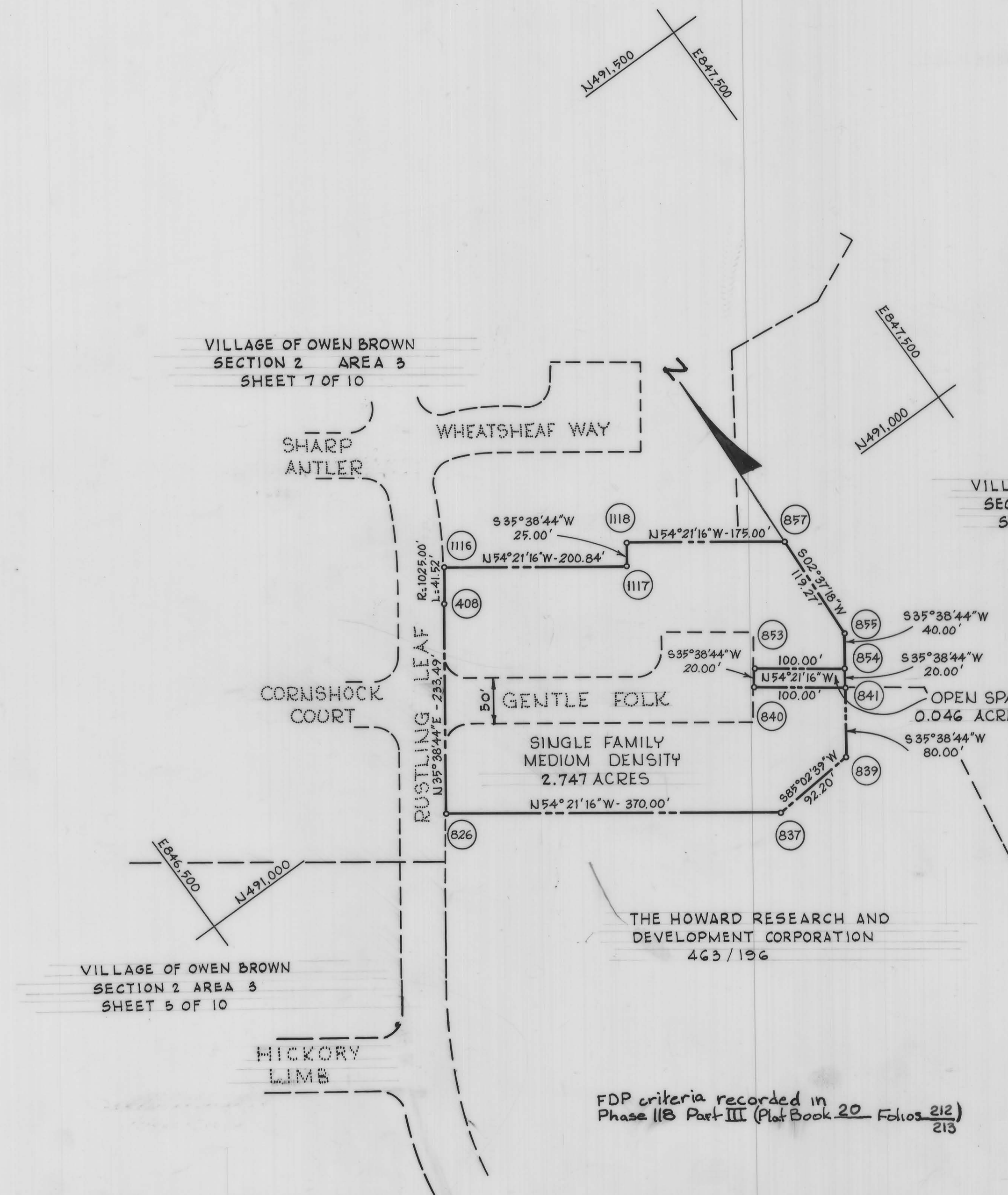


COORDINATES

No.	NORTH	EAST
1116	491,173.59	846,945.68
1117	491,056.54	847,108.89
1118	491,076.86	847,123.46
857	490,974.87	847,265.67
855	490,855.72	847,260.21
854	490,823.22	847,236.90
853	490,881.50	847,155.64
840	490,865.24	847,143.98
841	490,806.97	847,225.25
839	490,741.95	847,178.63
837	490,733.99	847,086.78
826	490,949.61	846,786.10
408	491,139.36	846,922.17



VILLAGE OF OWEN BROWN
SECTION 2 AREA 3
SHEET 5 OF 10

VILLAGE OF OWEN BROWN
SECTION 2 AREA 3
SHEET 7 OF 10

VILLAGE OF OWEN BROWN
SECTION 2 AREA 3
SHEET 8 OF 10

RECORDED PLAT BOOK 20 FOLIO 258
ON MAY 31 1973 AMONG THE LAND RECORDS OF
HOWARD COUNTY, MD.

VILLAGE OF OWEN BROWN
SECTION 2 AREA 3
PETITIONER AND OWNER

THE HOWARD RESEARCH AND DEVELOPMENT CORPORATION
COLUMBIA, MARYLAND 21044

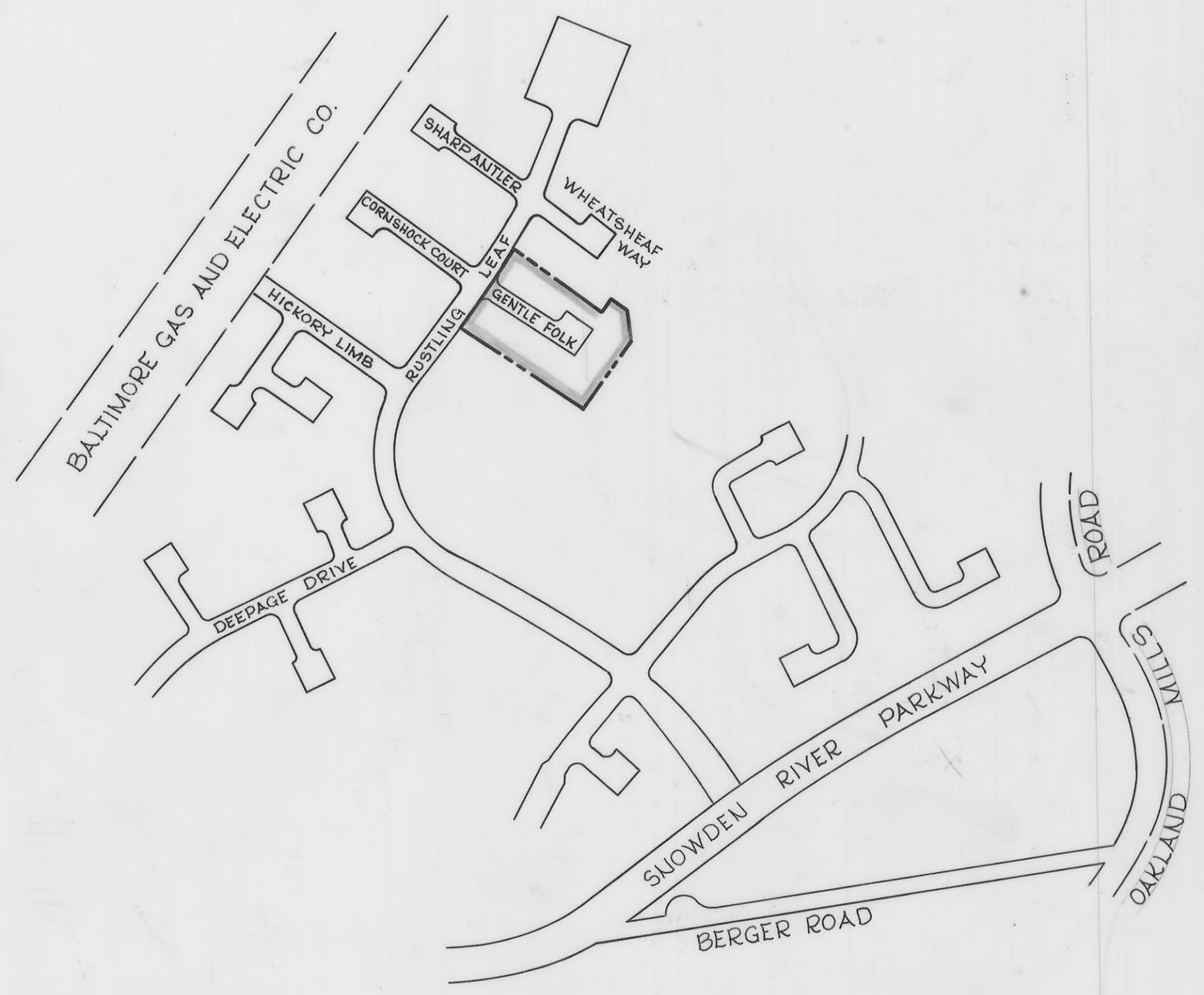
COLUMBIA

FINAL DEVELOPMENT PLAN PHASE 118 PART IV
6TH ELECTION DISTRICT HOWARD COUNTY, MD.

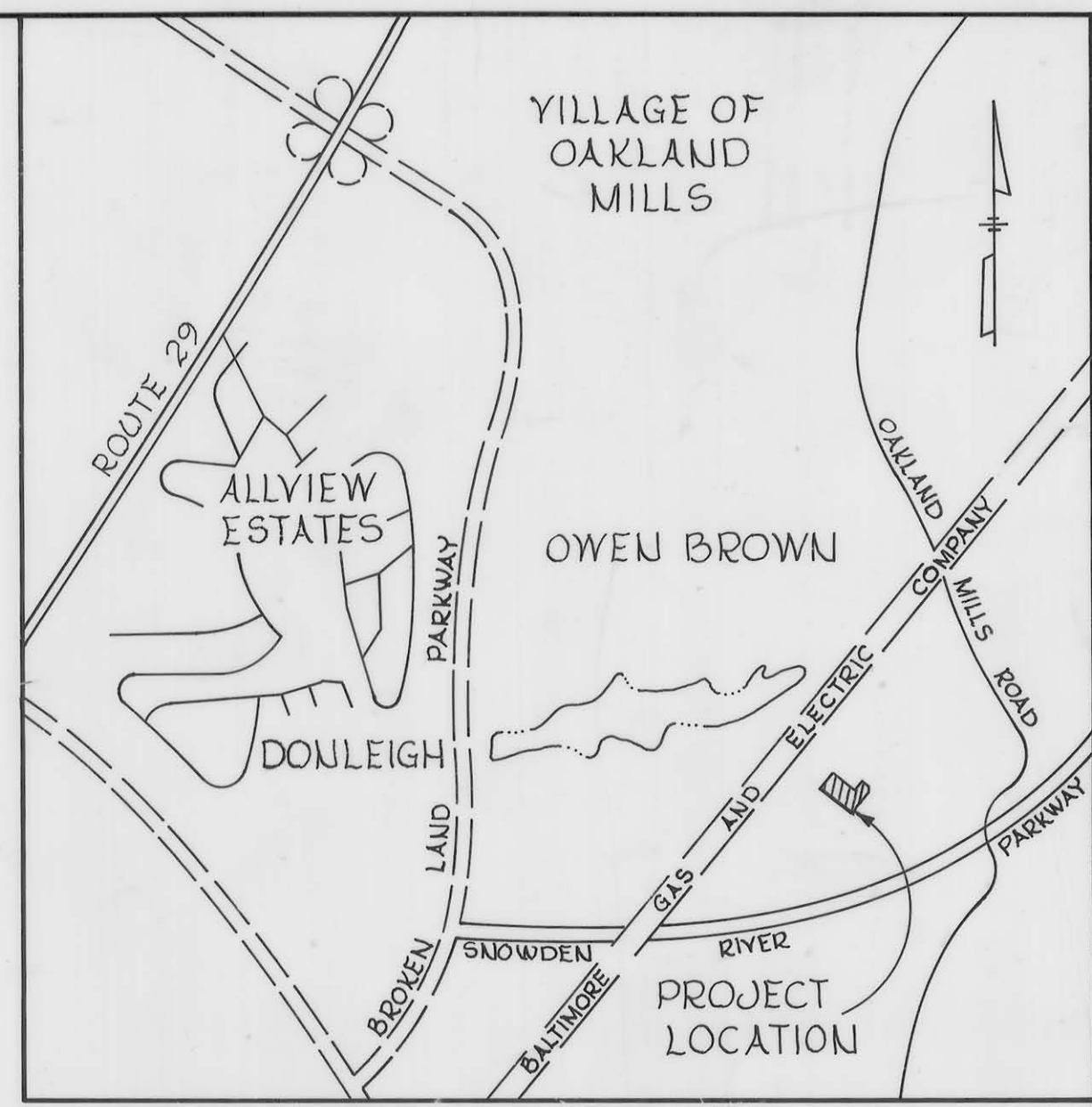
SCALE 1"=100' May 30, 1973 SHEET 2 OF 2

FDP-118 Part IV

DRWN. BY:
CHKD. BY:



KEY MAP
Scale: 1" = 400'



VICINITY MAP
Scale 1" = 3000'

RECORDED PLAT BOOK 20 FOLIO 257
ON MAY 31 19 73 AMONG THE LAND RECORDS OF
HOWARD COUNTY, MD.

VILLAGE OF OWEN BROWN
SECTION 2, AREA 3
PETITIONER AND OWNER
THE HOWARD RESEARCH AND DEVELOPMENT CORPORATION
COLUMBIA, MARYLAND 21044

COLUMBIA

FINAL DEVELOPMENT PLAN PHASE 118 PART IV
6th ELECTION DISTRICT HOWARD COUNTY, MD.
SCALE 1" = 400' May 30, 1973 SHEET 1 OF 2

PREPARED AS TO SHEETS 1 TO 2
IN ACCORDANCE WITH THE ZONING REGULATIONS
OF HOWARD COUNTY
ADOPTED MAY 16, 1961 AND AS
AMENDED MAY 27, 1965



Kenneth G. Melrod
LAND SURVEYOR'S SIGNATURE

AMENDED BOARD OF COUNTY COMM. B.C.C. CASE 606
RESOLUTION APPROVED NOVEMBER 22, 1972

AMENDED BOARD OF COUNTY COMM. B.C.C. CASE 507
RESOLUTION APPROVED NOVEMBER 4, 1968

BOARD OF COUNTY COMM. B. C. C. CASE 412
RESOLUTION APPROVED AUGUST 10, 1965

HOWARD COUNTY PLANNING BOARD

Thomas L. Harris 5-31-73
H.C.P.B. EXECUTIVE SECRETARY DATE

William P. Bunch 5/21/73
H. C. P. B. CHAIRMAN DATE