

BALTIMORE NATIONAL PIKE - U.S. RTE. 40

150' WIDE SHA RIGHT-OF-WAY

ASPHALT PAVED PUBLIC ROADWAY
PRINCIPAL ARTERIAL
POSTED SPEED LIMIT = 45 MPH

R=3443.34' (M&R)
Δ=004°02'15" (M&R)
L=242.65' (M&R)
CHB=S87°33'48"E (M)
S87°24'40"E (R)
CHD=242.60' (M&R)

SOILS INFORMATION					
SYMBOL	DESCRIPTION	STRUCTURAL LIMITATIONS	HYDROLOGIC GROUP	K FACTOR	HIGHLY ERODIBLE?
UuB	URBAN LAND-UDORTHENTS COMPLEX, 0 TO 8% SLOPES	SOMEWHAT LIMITED	D	NOT RATED	NO

NOTE: ENTIRE SITE AND IMMEDIATE VICINITY IS OF THE SOIL TYPE LISTED ABOVE.

LIMIT OF DISTURBANCE 77,670 S.F. OR 1.78 AC.

LEGEND:

- SOIL LABEL
- RIPRAP STABILIZATION
- LIMIT OF DISTURBANCE
- SUPER SILT FENCE
- STANDARD INLET PROTECTION
- AT GRADE INLET PROTECTION
- STABILIZED CONSTRUCTION ENTRANCE

REVISIONS

REV	DATE	COMMENT	DRAWN BY	CHECKED BY



Know what's below.
Call before you dig.
ALWAYS CALL 811
It's fast. It's free. It's the law.

ISSUED FOR MUNICIPAL & AGENCY REVIEW & APPROVAL

THIS DRAWING IS INTENDED FOR MUNICIPAL AND/OR AGENCY REVIEW AND APPROVAL. IT IS NOT INTENDED AS A CONSTRUCTION DOCUMENT UNLESS INDICATED OTHERWISE.

PROJECT No.: MD204000
DRAWN BY: DMD/JMR
CHECKED BY: RMS
DATE: 2/2/22
CAD I.D.: ECP-1

ENVIRONMENTAL CONCEPT PLAN

FOR

DASH IN

STORE #1832
9075 BALTIMORE NATIONAL PIKE
(US RTE. 40)
ELLCOTT CITY, MD 21043
HOWARD COUNTY

BOHLER //

901 DULANEY VALLEY ROAD, SUITE 801
TOWSON, MARYLAND 21284
Phone: (410) 821-7900
Fax: (410) 821-7987
MD@BohlerEng.com

R.M. STASIOSKI

PROFESSIONAL ENGINEER
No. 4942, EXPIRES 12/31/2022

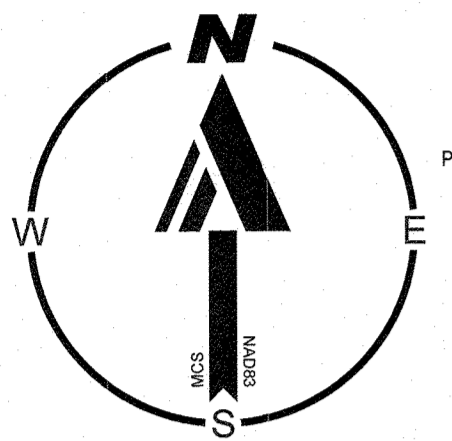
SHEET TITLE:

EROSION AND SEDIMENT CONTROL CONCEPT PLAN

SHEET NUMBER:

3

ORG. DATE - 2/2/2022



R=644.07' (M&R)
Δ=012°12'15" (M&R)
L=137.19' (M&R)
CHB=N07°26'49"W (M)
N07°17'40"W (R)
CHD=136.93' (M&R)

ST. JOHN'S LANE
VARIABLE WIDTH COUNTY RIGHT-OF-WAY

S76°26'35"W (M)
S76°35'43"W (R)
4.50' (M&R)

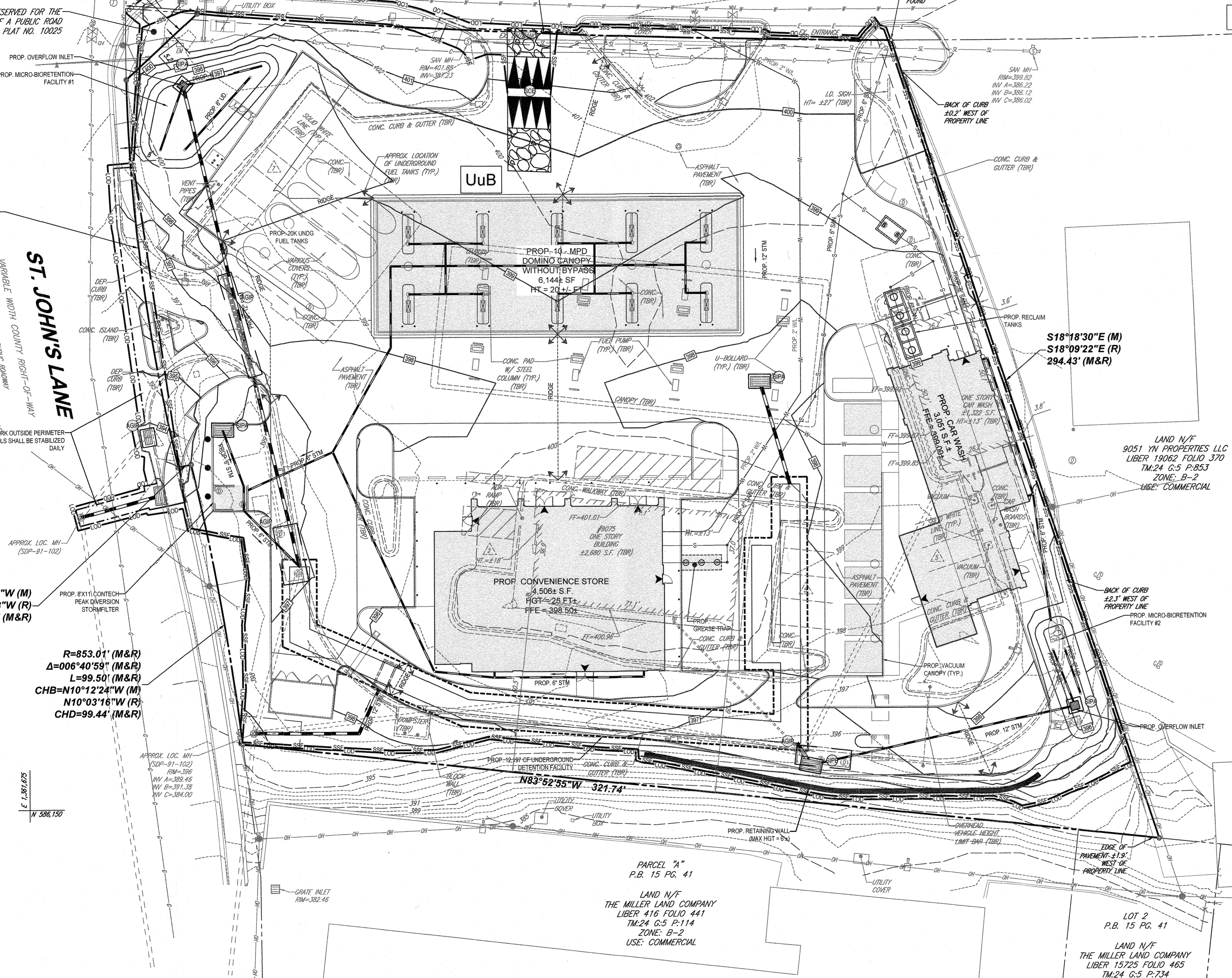
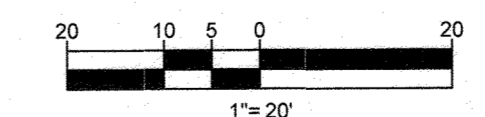
R=853.01' (M&R)
Δ=006°40'59" (M&R)
L=99.50' (M&R)
CHB=N10°12'24"W (M)
N10°03'16"W (R)
CHD=99.44' (M&R)

H:\2022\20220202\DRAWINGS\SP\EN\ENVIRONMENTAL CONCEPT PLAN\MD204000-03P-1.dwg - JAYCUT - 3 - EROSION AND SEDIMENT CONTROL CONCEPT PLAN

APPROVED: DEPARTMENT OF PLANNING AND ZONING

CHIEF, DIVISION OF LAND DEVELOPMENT, DATE 4/1/22
CHIEF, DEVELOPMENT ENGINEERING DIVISION, DATE 4/7/22

OWNER: POTOMAC ENERGY HOLDINGS, LLC LA PLATA, MD 20646 CONTACT: JASON BELT PHONE: 240-320-6448	DEVELOPER: DASH-IN 102 CENTENNIAL STREET, STE. 100 LA PLATA, MD 20645 CONTACT: JASON BELT PHONE: 240-320-6448
TAX MAP: 24	GRID: 5
PARCEL: 112	
ZONED: B-2	
2ND ELECTION DISTRICT, HOWARD COUNTY, MARYLAND	
SUBDIVISION NAME: SHELL OIL COMPANY PARCEL 'A' SECTION: AREA 'A' DEED # 11525 / 00383 PLAT # 10025	
FILE NO. ECP-22-032	



PARCEL "A"
P.B. 15 PG. 41
LAND N/F
THE MILLER LAND COMPANY
LIBER 416 FOLIO 441
TM:24 G:5 P:114
ZONE: B-2
USE: COMMERCIAL

LOT 2
P.B. 15 PG. 41
LAND N/F
THE MILLER LAND COMPANY
LIBER 15725 FOLIO 465
TM:24 G:5 P:734
ZONE: B-2
USE: COMMERCIAL

NOTE:
THE PROPOSED MICROBIORETENTION FACILITIES SHALL BE CONSTRUCTED ONLY UPON PERMANENT STABILIZATION OF THE CONTRIBUTING DRAINAGE AREA AND PERMISSION GRANTED FROM THE SEDIMENT CONTROL INSPECTOR.

