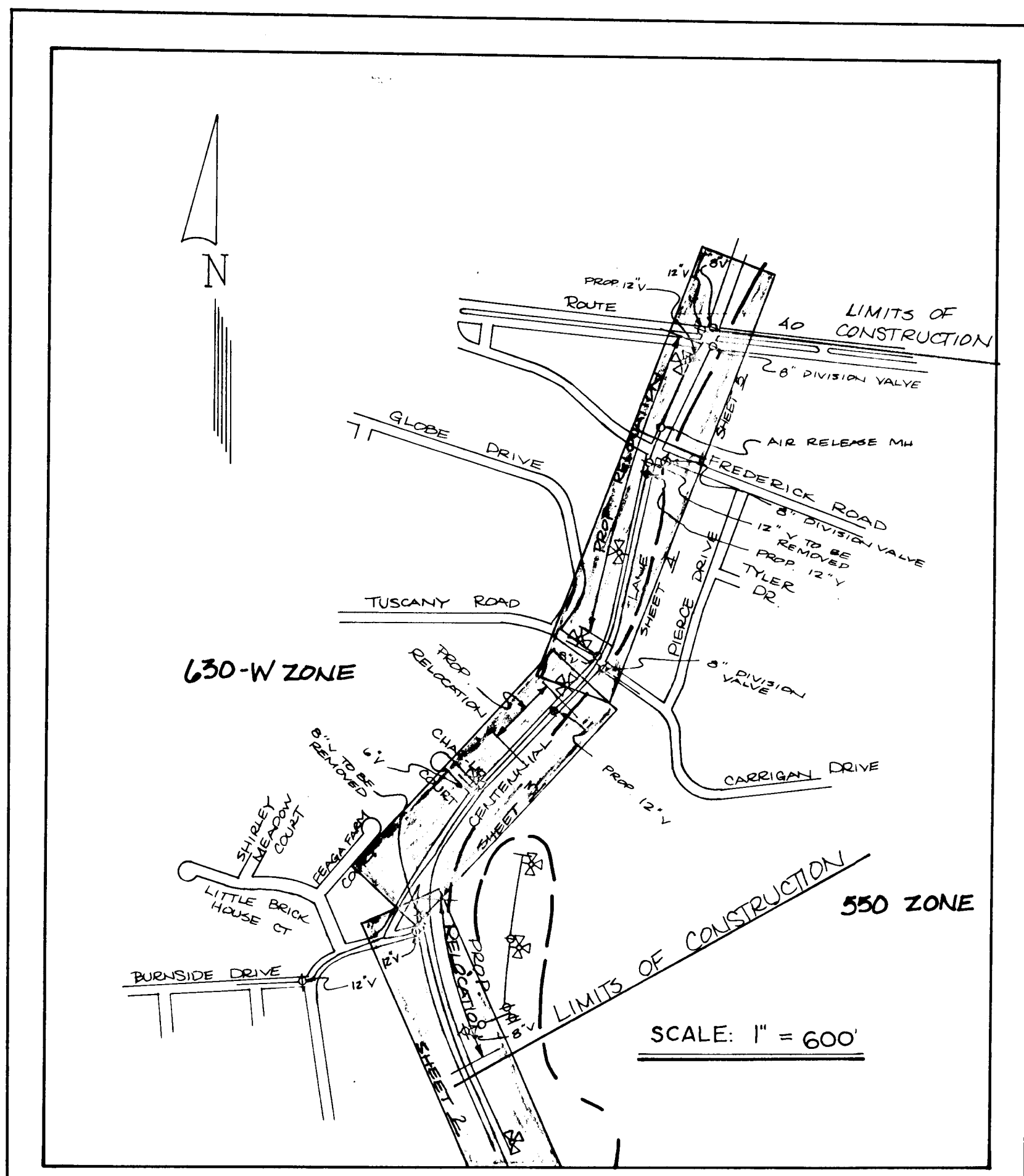
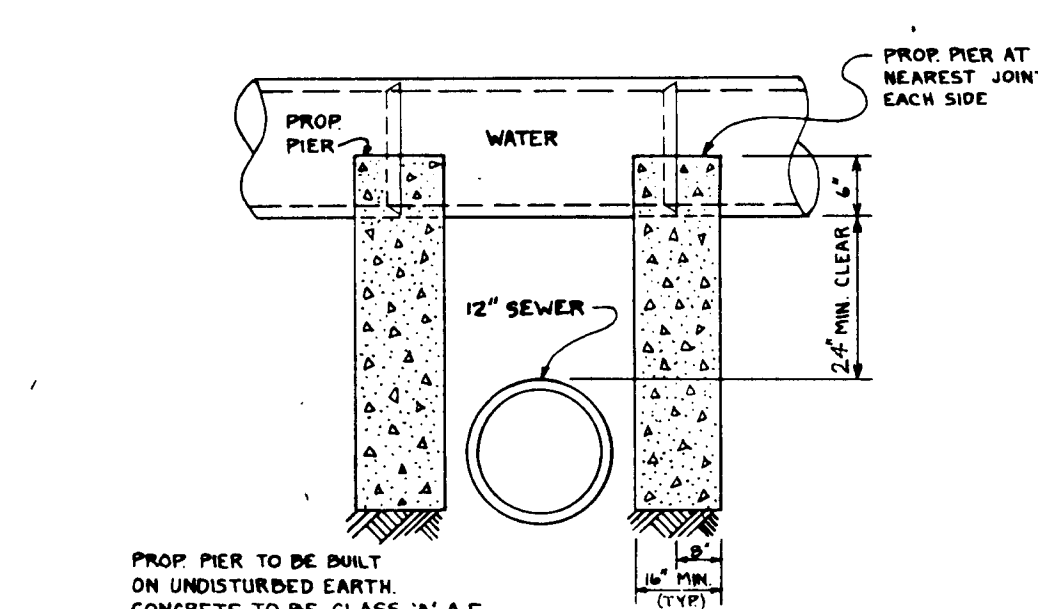
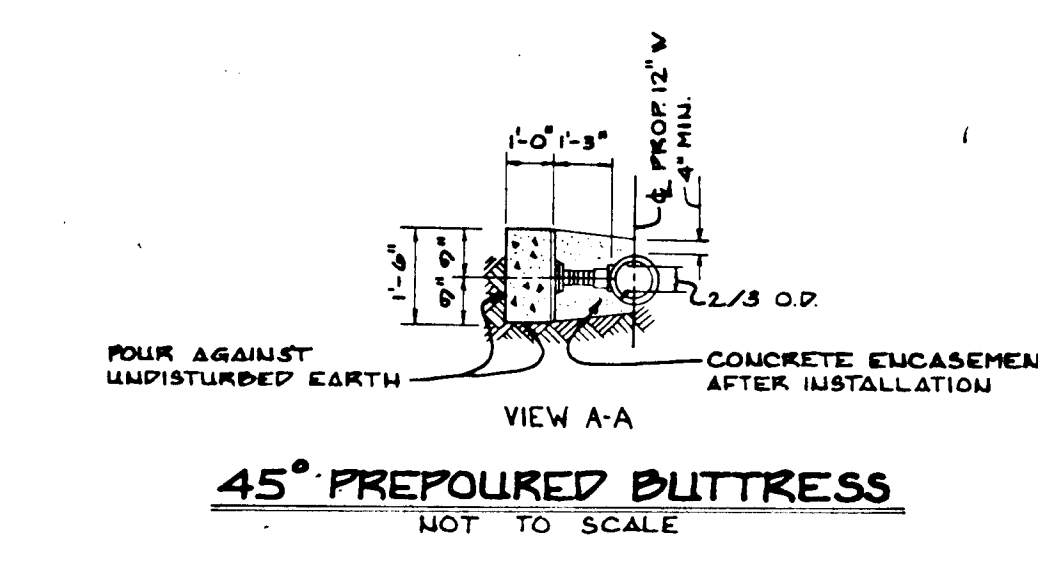
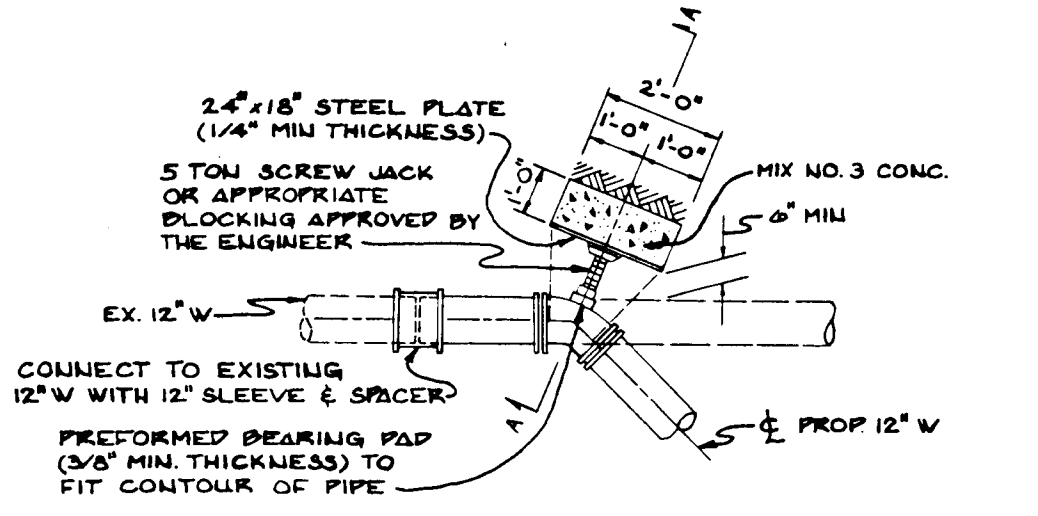


- Approximate locations of existing utilities are shown. The Contractor shall take all necessary precautions to protect the existing utilities and maintain uninterrupted services, any damage to existing utilities shall immediately be repaired to the satisfaction of the Engineer at the Contractor's expense.
- Clear all utilities by a minimum of 6".
- Trees and shrubs are to be protected from damage to maximum extent. Trees and shrubs located within the construction strip are not to be removed or damaged by the contractor.
- For details not shown on the drawings, and for materials and construction methods, use Howard County Design Manual, Volume IV, Standard Specifications and Details for Construction. The Contractor shall have a copy of Volume IV on the job.
- Contractor shall locate existing utilities a minimum of two (2) weeks in advance of construction operations in the vicinity of proposed utilities at his own expense.
- Contractor shall notify the following utility companies or agencies at least five working days before starting work shown on these plans:
  - State Highway Administration - 531-5533
  - Baltimore Gas & Electric - Contractor Services - 850-4620
  - Baltimore Gas & Electric - Underground Damage Control - 859-9004
  - Baltimore Gas & Electric - Trouble Shooting - 298-9001
  - Miss Utility - 1-559-0100
  - Colonial Pipeline Company - 795-1390
  - Bureau of Utilities, Howard County Dept. of Public Works - 992-2366
  - Chesapeake & Potomac (C&P) Telephone Company - 1-800-257-7777

- All water mains to be D.I.P. Class 52, unless otherwise noted. All pipe elevations are shown as invert elevations.
- Top of all water mains to have a minimum of 3.5' cover unless otherwise noted.
- Valves adjacent to tees shall be strapped to tees.
- All fittings shall be buttressed or anchored with concrete in accordance with the Standard Details unless otherwise provided for on the drawings.
- Bury line elevations on fire hydrants shall be set to the elevations shown on the drawings. All fire hydrants shall be strapped and buttressed with concrete in accordance with Standard Detail. Will - Sidewalk adjacent to curb. Soil around fire hydrants to be compacted in accordance with Section 100I of the Standard Specifications.
- Homes currently served by outside meters shall be reconnected to these meters.
- The Contractor shall not operate any water main valves on the existing system.
- The Contractor shall do everything possible to minimize the length of time for water service shut down. In no case shall the Water Main be shut down for more than six (6) hours at a time.
- It will be the responsibility of the Contractor to notify all water customers of the County, in writing, who will be without service, a minimum of 48 hours in advance of the schedule shutdown.
- The Contractor shall notify the Bureau of Utilities of Howard County, in writing, at least one (1) week prior to making any tie-in to the existing system.
- All roadway valves and manholes shall be adjusted to finished grade by the Contractor. The price for adjusting existing roadway valves and manholes shall be included in the price bid for "Adjusting Existing Manholes" and "Adjusting Existing Roadway Valves" items.
- Contractor shall remove trees, stumps and roots along line of excavation. Payment for such removal shall be included in the unit price bid for construction of the main.
- TBA denotes "To Be Abandoned". TBR denotes "To Be Removed".
- All horizontal controls are based on Maryland State Coordinates. All vertical controls are based on U.S.G.S. data.
- Refer to Howard County Field Books: 118; 119; 138 and 139, for information regarding this project.
- Six Howard County Control Stations have been used to survey this project: 3040001; 3140001; 3140002; 3140005; 3240005 and 324006.



TYPE OF BUILDING: RESIDENTIAL DEVELOPMENT / CAPITAL PROJ.	WATER AND SEWER CODE FOR COUNTY USE ONLY
NUMBER OF LOTS: 12	WATER NO.: J16
NO. OF WATER HOUSE CONNECTIONS: NEW-0	SEWER NO.: 5881700
NO. OF SEWER HOUSE CONNECTIONS: NEW-0	
DRAINAGE AREA: LITTLE PATUXENT	



CONSTRUCTION SEQUENCE FOR THE WATER AND SEWER MAIN RELOCATION

Construction and connection to the proposed 12" water main shall be implemented in sequence, as follows. This sequence assumes all Phase I Maintenance of Traffic and sediment control devices are in place and operational prior to construction of water mains, and appurtenances.

- SEQUENCE OF SEWER MAIN RELOCATION BASELINE STATION 156+00 SEE SHEET 3 OF 5
- Construct proposed sanitary manhole 3, with 12" stubout over existing 12" sanitary main. Existing 12" main shall remain in operation. Reform channel as required per Howard County Standards.
  - Construct proposed 12" sanitary main from proposed sanitary manhole 3 to manhole 3, 1+35.
  - Construct proposed sanitary manhole 4, with 12" stubout, over existing 8" sanitary main as shown on plan. Reform channel as required per Howard County Standards. Manhole 4 will have an interim top elevation. Note: During Phase I Construction per the Maintenance of Traffic and Sediment Control Plan, manhole 4 top elevation shall meet existing ground.
  - Construct proposed 12" sanitary main from manhole 4 to manhole 5, 0+45.
  - Construct proposed sanitary manhole 6 over existing 12" main. Make connection to proposed 12" main. Reform channel as required per Howard County Standards. Remove existing 12" sanitary main where required to construct proposed manhole 6.
  - Test and place proposed main in service. Brick shut existing 12" sanitary main entrance into proposed manhole 3. Remove existing 12" main between proposed manhole 3, manhole 6 and sanitary manhole 2240 prior to construction of the proposed twin 7' x 14' box culvert.
  - NOTE: Raise proposed sanitary manhole 4 top elevation to finished grade during Phase II Construction per the Maintenance of Traffic and Sediment Control Plan.

- SEQUENCE OF WATER MAIN RELOCATION BASELINE STATION 139+80 TO 144+70 SEE SHEET 2 OF 5
- Construct the 12" water main and temporarily cap and block the ends at the location shown on the plan.
  - Construct the pre-poured buttresses at baseline station 140+00 (station 0+20 of the proposed 12" water main) and at baseline station 144+70 (5+00 of the proposed 12" water main).
  - Test and chlorinate the new main.
  - Close the valves at the intersection of Centennial Lane and Burnside Drive and the three 8" valves in Burleigh Manor Subdivision located in Breconshire Drive at White Rose Way, at the same intersection in White Rose Way, and at the same intersection in Bristol Channel Drive and also at Centennial Lane, baseline station 134+35, which services Tanya Court. Open the division valve located on Tanya Court to provide temporary 550 Zone Service. Remove and relocate existing 8" valve at Centennial Lane, baseline station 140+80, offset 30' right. Cut the existing pipe and make connection with 12" sleeve and spacer as shown. Extend 8" water main to relocated valve, Centennial Lane, baseline station 140+80. Close the division valve on Tanya Court. Open all other valves and put the main back in service.
  - Cap and abandon the existing 12" water main from baseline station 139+80 to 140+50. Remove existing 12" water main and appurtenances from baseline station 140+50 to 144+70 and salvage. Remove existing 12" water main as required to construct connection.

- SEQUENCE OF WATER MAIN RELOCATION BASELINE STATION 150+25 TO 156+25 SEE SHEET 3 OF 5
- Construct the 12" water main and temporarily cap and block the ends at the location shown on the plan.
  - Construct the pre-poured buttresses at the bends at baseline station 150+25 (station 0+10 of the proposed 12" water main), and at baseline station 156+25 (station 2+40 of the proposed 12" water main).
  - Test and chlorinate the new main.
  - Close the valves at Centennial Lane, baseline station 172+00, at the intersections of Centennial Lane and Burnside Drive; and at Tuscany Road and on Burnside Drive, 280' east of the intersection with Takoyo Drive. Remove existing 12" water main and install 4-1/8 vertical bends at baseline station 150+35. Bend water main below proposed storm drain. The existing 8" division valve located in Carrigan Drive is to remain closed. Open all other valves and put the main back in service.
  - Remove the existing 12" water main and appurtenances from baseline station 155+60 to baseline station 157+60 and salvage.

- SEQUENCE OF WATER MAIN RELOCATION BASELINE STATION 161+75 TO 177+80 SEE SHEET 4 OF 5 AND 5 OF 5.
- Construct the 12" water main and temporarily cap and block the ends at the location shown on the plan.
  - Construct the pre-poured buttresses at the bend at Centennial Lane, baseline station 161+85 (station 0+25 of the proposed 12" water main).
  - Test and chlorinate the new main.
  - Provide temporary service to homes located on Centennial Lane between Carrigan Drive and Frederick Road. Close the 12" valve at baseline station 157+48; the 8" valve at baseline station 177+90; the two valves in the westbound lanes of U.S. Route 40 at Centennial Lane; the 8" valve in the westbound lanes of Frederick Road at Centennial Lane; and at Tuscany Road. Cut the existing pipe and make connection with 12" sleeve and spacer as shown. Remove existing 8" x 8" tee and replace with 8" x 12" cross where shown. Remove existing 8" water main and 8" valve and replace with 12" water main in same trench where shown. Remove existing 12" x 12" cross and 2 existing 8" x 12" reducers where shown and replace with 8" sleeve. Strap existing 8" valve to sleeve. Cut existing 12" water main at 8" x 12" tee and make connection with 12" sleeve and spacer as shown. Remove existing 8" water main to tee and plug unused 8" outlet as shown. Reset 2 fire hydrants as shown. Repair service connections as shown. The existing division valves, which are located in: Carrigan Drive; the westbound lane of Frederick Road and the eastbound lane of U.S. Route 40, are to remain closed. Open all other valves and put the main back in service. Remove temporary service connections and restore area to existing conditions.
  - Remove the existing 8" water main and appurtenances at Centennial Lane, baseline stations 172+50 to 177+80. Cap and abandon the existing 12" water main at baseline stations 161+70 to 172+50. Remove existing 12" water main and appurtenances at baseline stations 172+50 to 177+80.

MATERIALS LIST		AS-BUILT	TYPE MAT'L	SUPPLIER
ITEM	ESTIMATED QUANTITY			
12" D.I.P.	252 L.F.			
8" D.I.P.	40 L.F.			
6" D.I.P.	90 L.F.			
6" WHC	25			
1" WHC	20 L.F.			
3/4" WHC	170 L.F.			
12" V	3			
8" V	1			
4" ARM	1			
1" AIR VACUUM RELEASE VALVES	1 EA.			
8" x 12" C	1 EA.			
12" - 1/8" HB	1 EA.			
12" - 1/8" HB	1 EA.			
12" - 1/8" VR	1 EA.			
BUTTRESSES	9 EA.			
PREPOURED BUTTRESS	9 EA.			
6" x 6" TAPPING SLEEVE AND VALVE	1 EA.			

RESTORATION SCHEDULE

Baseline Station	Type of Material
139+80 - 144+70	Bituminous Concrete
150+20 - 150+45	Bituminous Concrete
156+15 - 156+15	Bituminous Concrete

# CENTENNIAL LANE

## WATER

### CAPITAL PROJECT No. W-8156

### CONTRACT No. 24-1726-A

NOTE: SEDIMENT CONTROL DETAILS SHOWN ON SHEETS 20 THROUGH 26 OF THE J-405-11 ROAD CONSTRUCTION DRAWING PACKAGE.

HOWARD COUNTY, MARYLAND

Director of Public Works: *Robert M. Bennett* 11-29-90

Chief, Bureau of Engineering: *Robert M. Bennett* 1-23-91

Chief, Utility Design Division: *Robert M. Bennett* 11-13-90

MILDENBERG, MOCHI & ASSOCIATES, INC.

ENGINEERS • SURVEYORS • PLANNERS

3300 North Ridge Road, Suite 235, Ellicott City, Maryland 21043-3350

(301) 461-0078 D.C. Metro No. (301) 621-5768

DES: JEM/KAM

DRN: STAFF

CHK: JEM

PROJ # 87001-00

DATE: 12/90

REVISION	DATE	BY	NO.

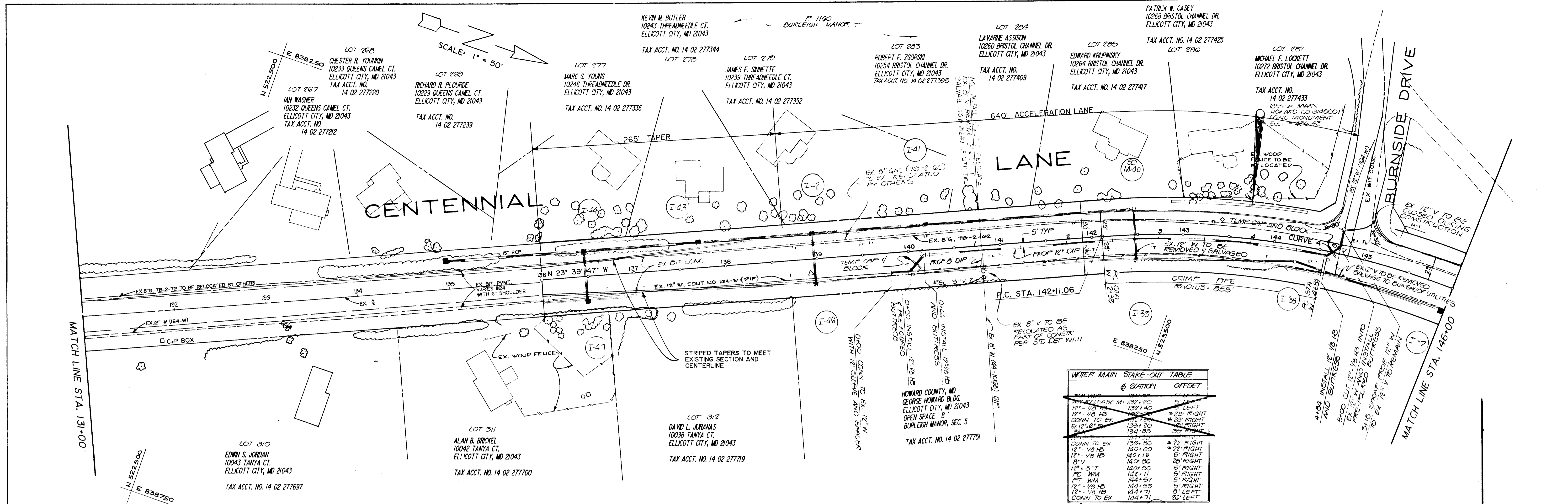
TITLE SHEET

600' SCALE MAP NO. 24 BLOCK NO.

CENTENNIAL LANE WATER AND SEWER CAPITAL PROJECT No. W-8156 CONTRACT No. 24-1726-A ELECTION DISTRICT No. 2 HOWARD COUNTY, MARYLAND

SCALE AS SHOWN

SHEET 1 OF 5



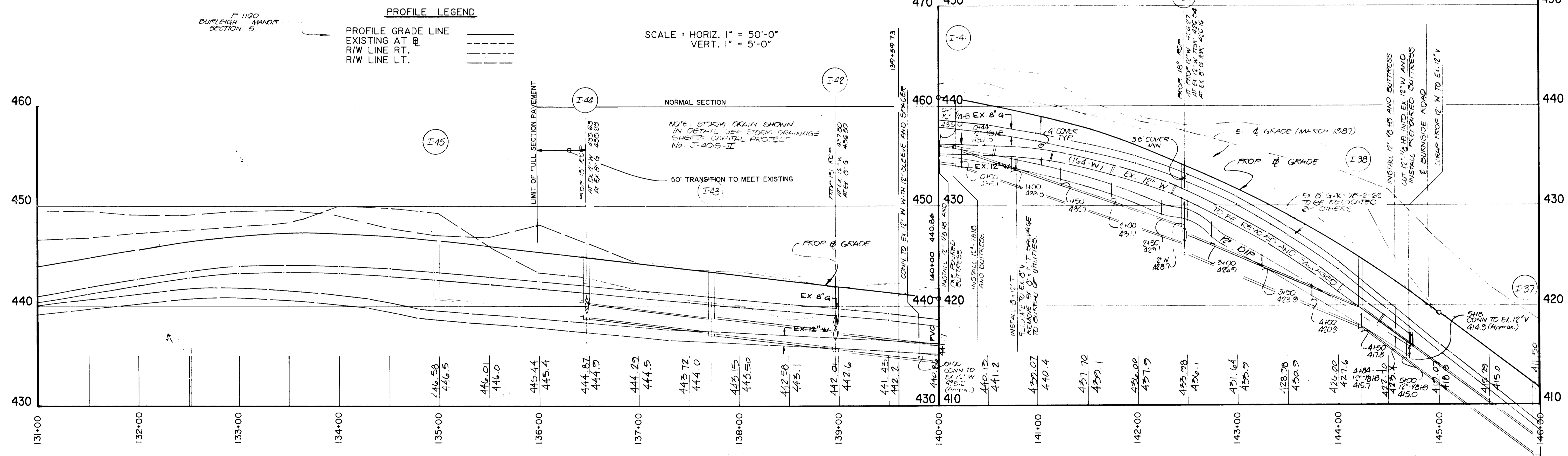
**WATER MAIN STAKE-OUT TABLE**

STATION	OFFSET	MARK
131+00	132+00	22' LEFT
12' - 1/8 HB	132+40	22' LEFT
12' - 1/8 HB	132+80	22' RIGHT
CONN. TO EX	133+20	22' RIGHT
EX 12" W	133+60	22' RIGHT
12' - 1/8 HB	134+00	22' RIGHT
CONN. TO EX	134+40	22' RIGHT
EX 12" W	134+80	22' RIGHT
12' - 1/8 HB	135+20	22' RIGHT
CONN. TO EX	135+60	22' LEFT
EX 12" W	136+00	22' LEFT
12' - 1/8 HB	136+40	22' LEFT
CONN. TO EX	136+80	22' LEFT
EX 12" W	137+20	22' LEFT
12' - 1/8 HB	137+60	22' LEFT
CONN. TO EX	138+00	22' LEFT
EX 12" W	138+40	22' LEFT
12' - 1/8 HB	138+80	22' LEFT
CONN. TO EX	139+20	22' LEFT
EX 12" W	139+60	22' LEFT
12' - 1/8 HB	140+00	22' LEFT
CONN. TO EX	140+40	22' LEFT
EX 12" W	140+80	22' LEFT
12' - 1/8 HB	141+20	22' LEFT
CONN. TO EX	141+60	22' LEFT
EX 12" W	142+00	22' LEFT
12' - 1/8 HB	142+40	22' LEFT
CONN. TO EX	142+80	22' LEFT
EX 12" W	143+20	22' LEFT
12' - 1/8 HB	143+60	22' LEFT
CONN. TO EX	144+00	22' LEFT
EX 12" W	144+40	22' LEFT
12' - 1/8 HB	144+80	22' LEFT
CONN. TO EX	145+20	22' LEFT
EX 12" W	145+60	22' LEFT
12' - 1/8 HB	146+00	22' LEFT

**PROFILE LEGEND**

PROFILE GRADE LINE  
EXISTING AT R/W LINE RT.  
R/W LINE LT.

SCALE: HORIZ. 1" = 50'-0"  
VERT. 1" = 5'-0"



NOTE: SEDIMENT CONTROL DETAILS SHOWN ON SHEETS 20 THROUGH 26 OF THE J-4015-II ROAD CONSTRUCTION DRAWING PACKAGE

1. REVISED PER CO. 50% COMMENTS 6-24-87  
2. RESUBMITTED PER CO. COMMENTS 8-25-88  
3. 2ND SUBMISSION CHANGES PER CO. COMMENTS 4-29-88  
4. 3RD SUBMISSION CHANGES PER CO. COMMENTS 10-20-87 (Revised Comments 10-20-87)

**DEPARTMENT OF PUBLIC WORKS**  
HOWARD COUNTY, MARYLAND

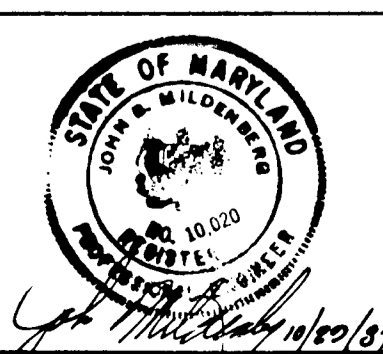
Robert M. Bevinger 11-19-90  
CHIEF, BUREAU OF UTILITIES

Robert M. Bevinger 1-23-91  
CHIEF, BUREAU OF ENGINEERING

Robert M. Bevinger 11-13-90  
CHIEF, UTILITY DESIGN DIVISION

**MILDENBERG MOCHI & ASSOCIATES, INC.**  
ENGINEERS • SURVEYORS • PLANNERS

2300 North Ridge Road, Suite 235, Elkridge City, Maryland 21043-3350  
(301) 461-0078 D.C. Metro (301) 621-5768



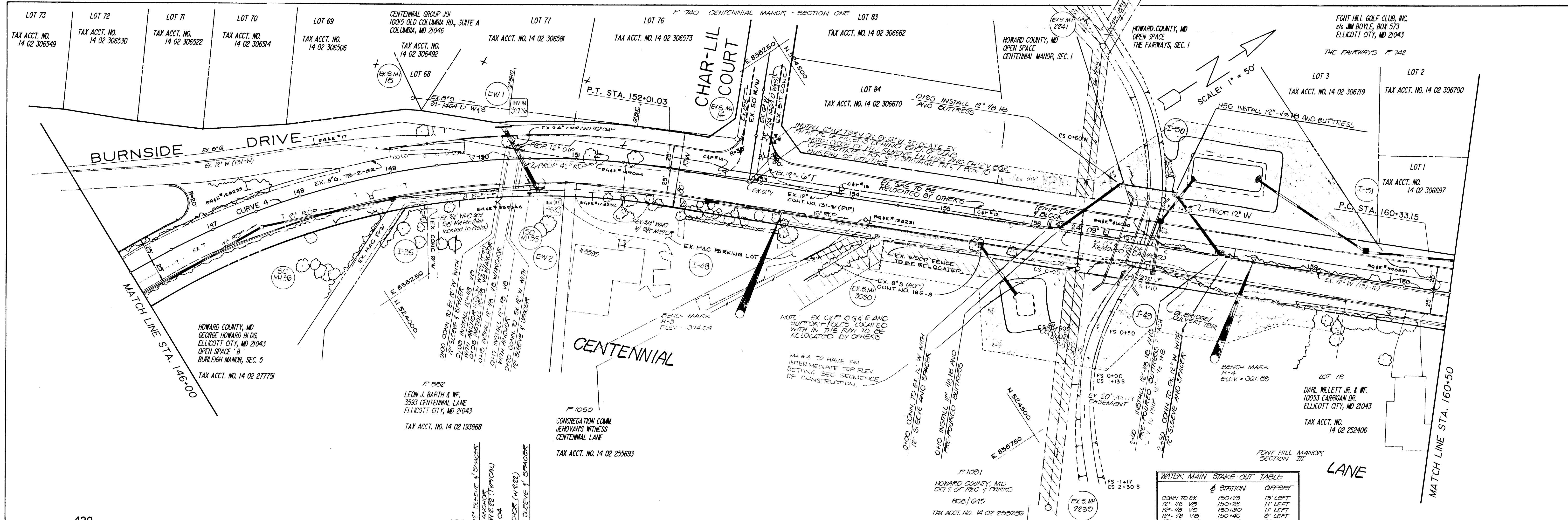
DES: L/V	
DRN: M/V	
CHK: L/V	
DATE: 12/90	
BY: NO	REVISION
	DATE

**WATER & SEWER RELOCATION PLAN & PROFILE**  
STA. 131+00 TO STA. 146+00  
CENTENNIAL LANE

600' SCALE MAP NO. 24 BLOCK NO.

**CENTENNIAL LANE**  
STATION 136+00 TO U.S. ROUTE 40  
CAPITAL PROJECT W-8156 CONTRACT NO. 24-1726-A  
ELECTION DISTRICT NO. 2  
HOWARD COUNTY, MARYLAND

SCALE AS SHOWN  
SHEET 2 OF 5



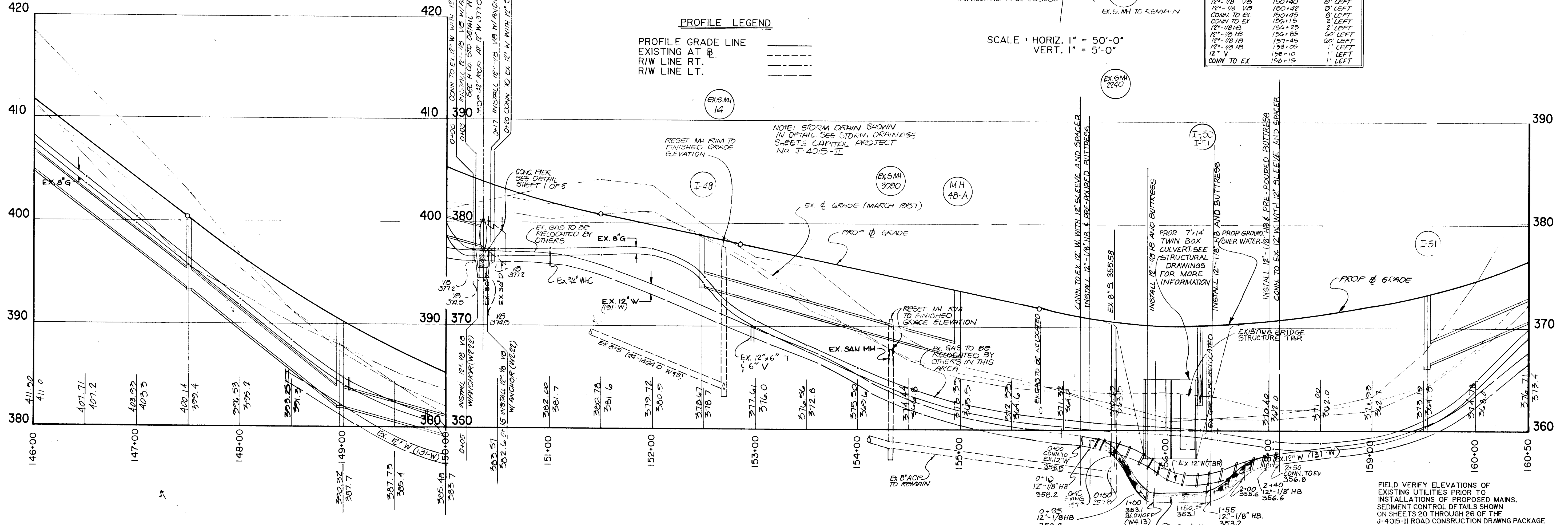
**WATER MAIN STAKE-OUT TABLE**

STATION	OFFSET
DOWN TO EX	150+25
12" 1/8" V.D.	150+28
12" 1/8" V.D.	150+30
12" 1/8" V.D.	150+40
12" 1/8" V.D.	150+42
DOWN TO EX	150+45
DOWN TO EX	150+15
12" 1/8" V.D.	156+25
12" 1/8" V.D.	156+85
12" 1/8" V.D.	157+45
12" 1/8" V.D.	158+05
12" V	158+10
DOWN TO EX	158+15

**PROFILE LEGEND**

PROFILE GRADE LINE  
 EXISTING AT [Symbol]  
 R/W LINE RT.  
 R/W LINE LT.

SCALE: HORIZ. 1" = 50'-0"  
 VERT. 1" = 5'-0"



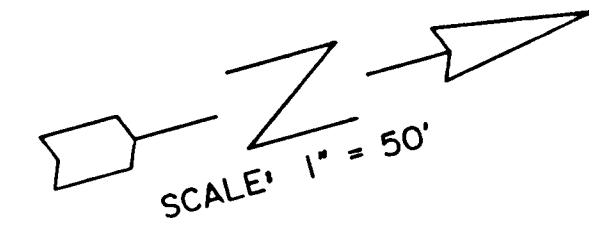
FIELD VERIFY ELEVATIONS OF EXISTING UTILITIES PRIOR TO INSTALLATIONS OF PROPOSED MAINS. SEDIMENT CONTROL DETAILS SHOWN ON SHEETS 20 THROUGH 26 OF THE J-4015-11 ROAD CONSTRUCTION DRAWING PACKAGE.

2. REVIEWED PER CO. 200X COMMENTS 1-21-90  
 3. SUBMITTED PER CO. COMMENTS 1-19-90  
 4. SUBMITTED PER CO. COMMENTS 1-19-90  
 5. SUBMITTED PER CO. COMMENTS 1-19-90  
 6. SUBMITTED PER CO. COMMENTS 1-19-90  
 7. SUBMITTED PER CO. COMMENTS 1-19-90  
 8. SUBMITTED PER CO. COMMENTS 1-19-90  
 9. SUBMITTED PER CO. COMMENTS 1-19-90  
 10. SUBMITTED PER CO. COMMENTS 1-19-90  
 11. SUBMITTED PER CO. COMMENTS 1-19-90  
 12. SUBMITTED PER CO. COMMENTS 1-19-90  
 13. SUBMITTED PER CO. COMMENTS 1-19-90  
 14. SUBMITTED PER CO. COMMENTS 1-19-90  
 15. SUBMITTED PER CO. COMMENTS 1-19-90  
 16. SUBMITTED PER CO. COMMENTS 1-19-90  
 17. SUBMITTED PER CO. COMMENTS 1-19-90  
 18. SUBMITTED PER CO. COMMENTS 1-19-90  
 19. SUBMITTED PER CO. COMMENTS 1-19-90  
 20. SUBMITTED PER CO. COMMENTS 1-19-90  
 21. SUBMITTED PER CO. COMMENTS 1-19-90  
 22. SUBMITTED PER CO. COMMENTS 1-19-90  
 23. SUBMITTED PER CO. COMMENTS 1-19-90  
 24. SUBMITTED PER CO. COMMENTS 1-19-90  
 25. SUBMITTED PER CO. COMMENTS 1-19-90  
 26. SUBMITTED PER CO. COMMENTS 1-19-90  
 27. SUBMITTED PER CO. COMMENTS 1-19-90  
 28. SUBMITTED PER CO. COMMENTS 1-19-90  
 29. SUBMITTED PER CO. COMMENTS 1-19-90  
 30. SUBMITTED PER CO. COMMENTS 1-19-90  
 31. SUBMITTED PER CO. COMMENTS 1-19-90  
 32. SUBMITTED PER CO. COMMENTS 1-19-90  
 33. SUBMITTED PER CO. COMMENTS 1-19-90  
 34. SUBMITTED PER CO. COMMENTS 1-19-90  
 35. SUBMITTED PER CO. COMMENTS 1-19-90  
 36. SUBMITTED PER CO. COMMENTS 1-19-90  
 37. SUBMITTED PER CO. COMMENTS 1-19-90  
 38. SUBMITTED PER CO. COMMENTS 1-19-90  
 39. SUBMITTED PER CO. COMMENTS 1-19-90  
 40. SUBMITTED PER CO. COMMENTS 1-19-90  
 41. SUBMITTED PER CO. COMMENTS 1-19-90  
 42. SUBMITTED PER CO. COMMENTS 1-19-90  
 43. SUBMITTED PER CO. COMMENTS 1-19-90  
 44. SUBMITTED PER CO. COMMENTS 1-19-90  
 45. SUBMITTED PER CO. COMMENTS 1-19-90  
 46. SUBMITTED PER CO. COMMENTS 1-19-90  
 47. SUBMITTED PER CO. COMMENTS 1-19-90  
 48. SUBMITTED PER CO. COMMENTS 1-19-90  
 49. SUBMITTED PER CO. COMMENTS 1-19-90  
 50. SUBMITTED PER CO. COMMENTS 1-19-90  
 51. SUBMITTED PER CO. COMMENTS 1-19-90  
 52. SUBMITTED PER CO. COMMENTS 1-19-90  
 53. SUBMITTED PER CO. COMMENTS 1-19-90  
 54. SUBMITTED PER CO. COMMENTS 1-19-90  
 55. SUBMITTED PER CO. COMMENTS 1-19-90  
 56. SUBMITTED PER CO. COMMENTS 1-19-90  
 57. SUBMITTED PER CO. COMMENTS 1-19-90  
 58. SUBMITTED PER CO. COMMENTS 1-19-90  
 59. SUBMITTED PER CO. COMMENTS 1-19-90  
 60. SUBMITTED PER CO. COMMENTS 1-19-90  
 61. SUBMITTED PER CO. COMMENTS 1-19-90  
 62. SUBMITTED PER CO. COMMENTS 1-19-90  
 63. SUBMITTED PER CO. COMMENTS 1-19-90  
 64. SUBMITTED PER CO. COMMENTS 1-19-90  
 65. SUBMITTED PER CO. COMMENTS 1-19-90  
 66. SUBMITTED PER CO. COMMENTS 1-19-90  
 67. SUBMITTED PER CO. COMMENTS 1-19-90  
 68. SUBMITTED PER CO. COMMENTS 1-19-90  
 69. SUBMITTED PER CO. COMMENTS 1-19-90  
 70. SUBMITTED PER CO. COMMENTS 1-19-90  
 71. SUBMITTED PER CO. COMMENTS 1-19-90  
 72. SUBMITTED PER CO. COMMENTS 1-19-90  
 73. SUBMITTED PER CO. COMMENTS 1-19-90  
 74. SUBMITTED PER CO. COMMENTS 1-19-90  
 75. SUBMITTED PER CO. COMMENTS 1-19-90  
 76. SUBMITTED PER CO. COMMENTS 1-19-90  
 77. SUBMITTED PER CO. COMMENTS 1-19-90  
 78. SUBMITTED PER CO. COMMENTS 1-19-90  
 79. SUBMITTED PER CO. COMMENTS 1-19-90  
 80. SUBMITTED PER CO. COMMENTS 1-19-90  
 81. SUBMITTED PER CO. COMMENTS 1-19-90  
 82. SUBMITTED PER CO. COMMENTS 1-19-90  
 83. SUBMITTED PER CO. COMMENTS 1-19-90  
 84. SUBMITTED PER CO. COMMENTS 1-19-90  
 85. SUBMITTED PER CO. COMMENTS 1-19-90  
 86. SUBMITTED PER CO. COMMENTS 1-19-90  
 87. SUBMITTED PER CO. COMMENTS 1-19-90  
 88. SUBMITTED PER CO. COMMENTS 1-19-90  
 89. SUBMITTED PER CO. COMMENTS 1-19-90  
 90. SUBMITTED PER CO. COMMENTS 1-19-90  
 91. SUBMITTED PER CO. COMMENTS 1-19-90  
 92. SUBMITTED PER CO. COMMENTS 1-19-90  
 93. SUBMITTED PER CO. COMMENTS 1-19-90  
 94. SUBMITTED PER CO. COMMENTS 1-19-90  
 95. SUBMITTED PER CO. COMMENTS 1-19-90  
 96. SUBMITTED PER CO. COMMENTS 1-19-90  
 97. SUBMITTED PER CO. COMMENTS 1-19-90  
 98. SUBMITTED PER CO. COMMENTS 1-19-90  
 99. SUBMITTED PER CO. COMMENTS 1-19-90  
 100. SUBMITTED PER CO. COMMENTS 1-19-90

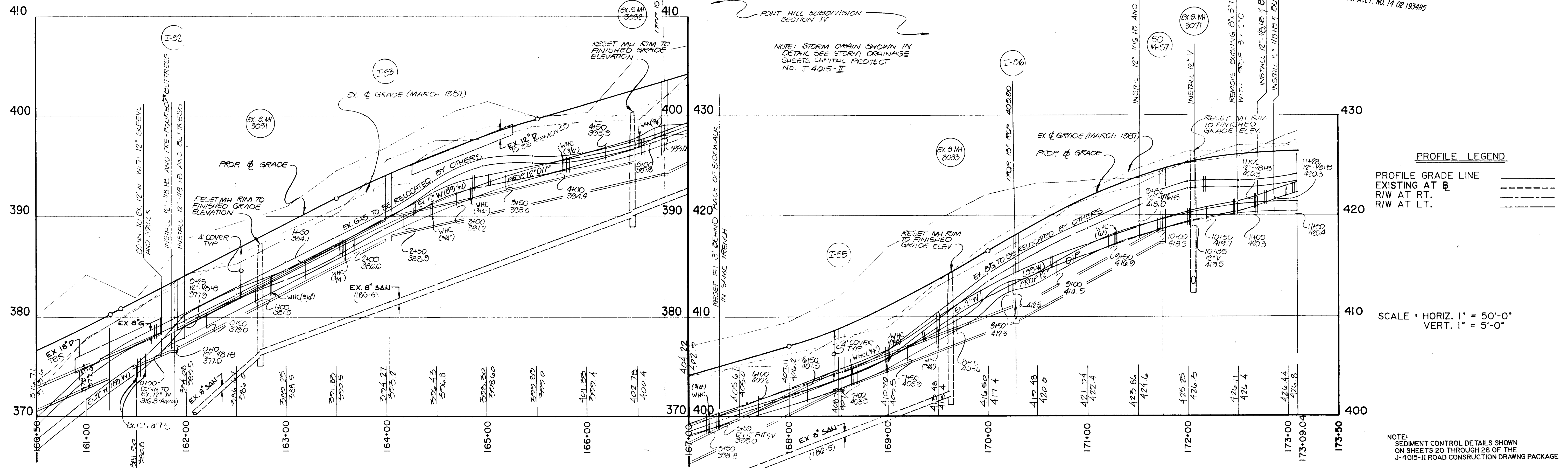
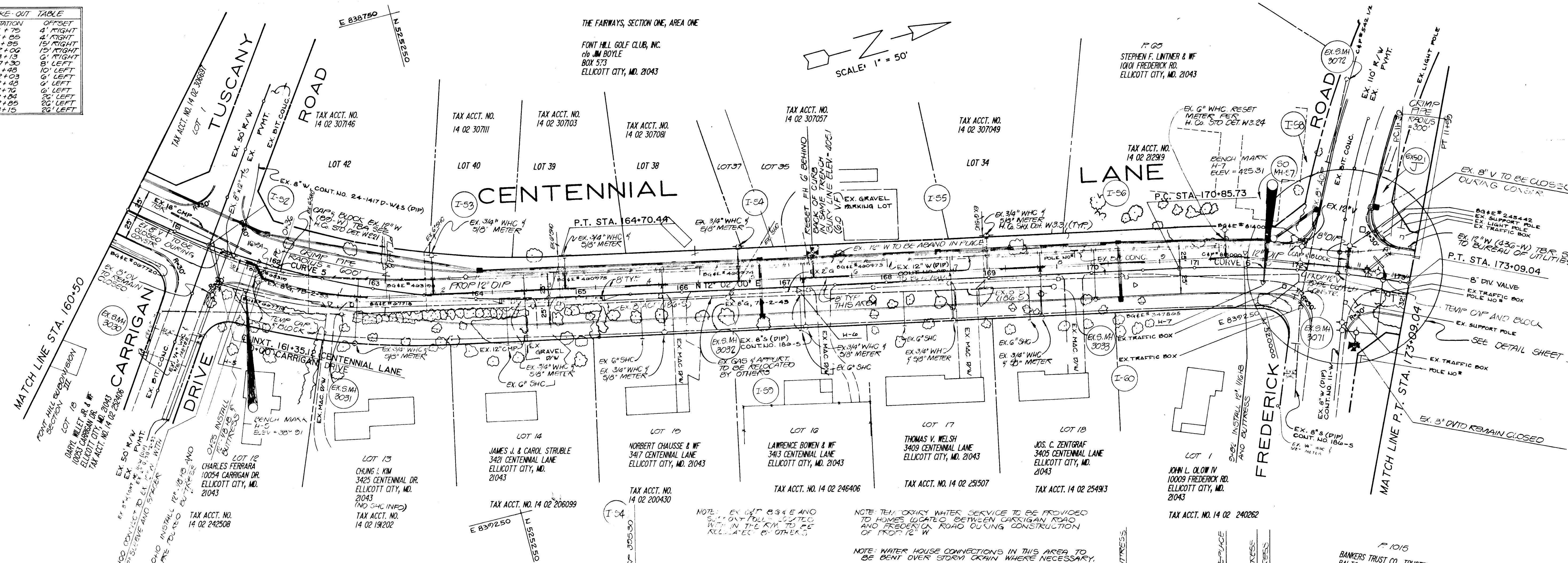
DEPARTMENT OF PUBLIC WORKS HOWARD COUNTY, MARYLAND James M. ... 12/29/90 Robert M. ... 11-19-90 DIRECTOR OF PUBLIC WORKS CHIEF, BUREAU OF UTILITIES		 ENGINEERS • SURVEYORS • PLANNERS 3300 North Ridge Road, Suite 235, Ellicott City, Maryland 21043-3350 (301) 461-0078 D.C. Metro: (301) 621-5788		 DES: KAM DRN: JMS/KAM CHK: JEM DATE: 12/90		WATER & SEWER RELOCATION PLAN & PROFILE STA. 146+00 TO STA. 160+50 CENTENNIAL LANE		CENTENNIAL LANE STATION 136+00 TO U.S. ROUTE 40 CAPITAL PROJECT W-8156 CONTRACT NO. 24-1726-A ELECTION DISTRICT NO. 2 HOWARD COUNTY, MARYLAND		SCALE AS SHOWN SHEET 3 OF 5
--	--	---	--	---	--	---	--	---	--	--------------------------------

WATER MAIN	SHAKE-OUT TABLE
CONV TO EX	101+75 4' RIGHT
12" - 18" HD	101+85 4' RIGHT
12" - 18" HD	101+95 15' RIGHT
PC WM	102+00 15' RIGHT
PC WM	103+13 0' RIGHT
12" - 18" HD	107+30 8' LEFT
12" - 18" HD	107+40 10' LEFT
12" - 18" HD	107+43 10' LEFT
12" - 18" HD	107+45 10' LEFT
12" - 18" HD	107+48 10' LEFT
12" - 18" HD	107+50 10' LEFT
12" - 18" HD	107+52 10' LEFT
12" - 18" HD	107+54 10' LEFT
12" - 18" HD	107+56 10' LEFT
12" - 18" HD	107+58 10' LEFT
12" - 18" HD	107+60 10' LEFT
12" - 18" HD	107+62 10' LEFT
12" - 18" HD	107+64 10' LEFT
12" - 18" HD	107+66 10' LEFT
12" - 18" HD	107+68 10' LEFT
12" - 18" HD	107+70 10' LEFT
12" - 18" HD	107+72 10' LEFT
12" - 18" HD	107+74 10' LEFT
12" - 18" HD	107+76 10' LEFT
12" - 18" HD	107+78 10' LEFT
12" - 18" HD	107+80 10' LEFT
12" - 18" HD	107+82 10' LEFT
12" - 18" HD	107+84 10' LEFT
12" - 18" HD	107+86 10' LEFT
12" - 18" HD	107+88 10' LEFT
12" - 18" HD	107+90 10' LEFT
12" - 18" HD	107+92 10' LEFT
12" - 18" HD	107+94 10' LEFT
12" - 18" HD	107+96 10' LEFT
12" - 18" HD	107+98 10' LEFT
12" - 18" HD	108+00 10' LEFT

THE FARWAYS, SECTION ONE, AREA ONE  
 FONT HILL GOLF CLUB, INC.  
 16 JIM BOYLE  
 BOX 573  
 ELLICOTT CITY, MD. 21043



F-00  
 STEPHEN F. LINTNER & WF  
 1001 FREDERICK RD.  
 ELLICOTT CITY, MD. 21043



**PROFILE LEGEND**

PROFILE GRADE LINE  
 EXISTING AT R/W AT RT.  
 EXISTING AT R/W AT LT.

SCALE: HORIZ. 1" = 50'-0"  
 VERT. 1" = 5'-0"

NOTE: SEDIMENT CONTROL DETAILS SHOWN ON SHEETS 20 THROUGH 26 OF THE J-4015-11 ROAD CONSTRUCTION DRAWING PACKAGE

1. REVISED PER CD. 00% COMMENTS C 26. 93  
 2. RECOMMENDED PER CD. COMMENT B 25. 88  
 3. 1.2% SUBMISSION CHANGES PER CD. COMMENTS 4-23-88  
 BRUNING 441 2629150  
 Submitted to Howard County, MD. (Per Comments 02/27)

**DEPARTMENT OF PUBLIC WORKS**  
 HOWARD COUNTY, MARYLAND

*James P. ...*  
 DIRECTOR OF PUBLIC WORKS DATE

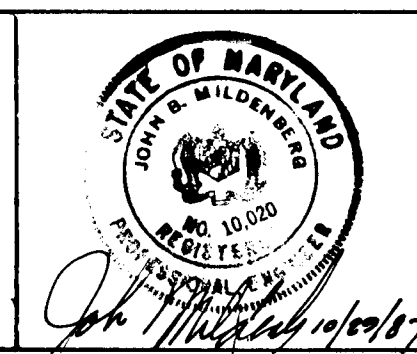
*Robert H. ...*  
 CHIEF, BUREAU OF UTILITIES DATE 11-19-90

*William ...*  
 CHIEF, BUREAU OF ENGINEERING DATE 1-23-91

*Clayton ...*  
 CHIEF, UTILITY DESIGN DIVISION DATE 11-13-90

**MILDENBERG, MOCHI & ASSOCIATES, INC.**  
 ENGINEERS • SURVEYORS • PLANNERS

3300 North Ridge Road, Suite 235, Ellicott City, Maryland 21043-3350  
 (301) 461-0078 D.C. Metro: (301) 621-5768



DES: KAM	BY NO.	REVISION	DATE
DRN: JMS/KAM			
CHK: JEM			
DATE: 12/90			

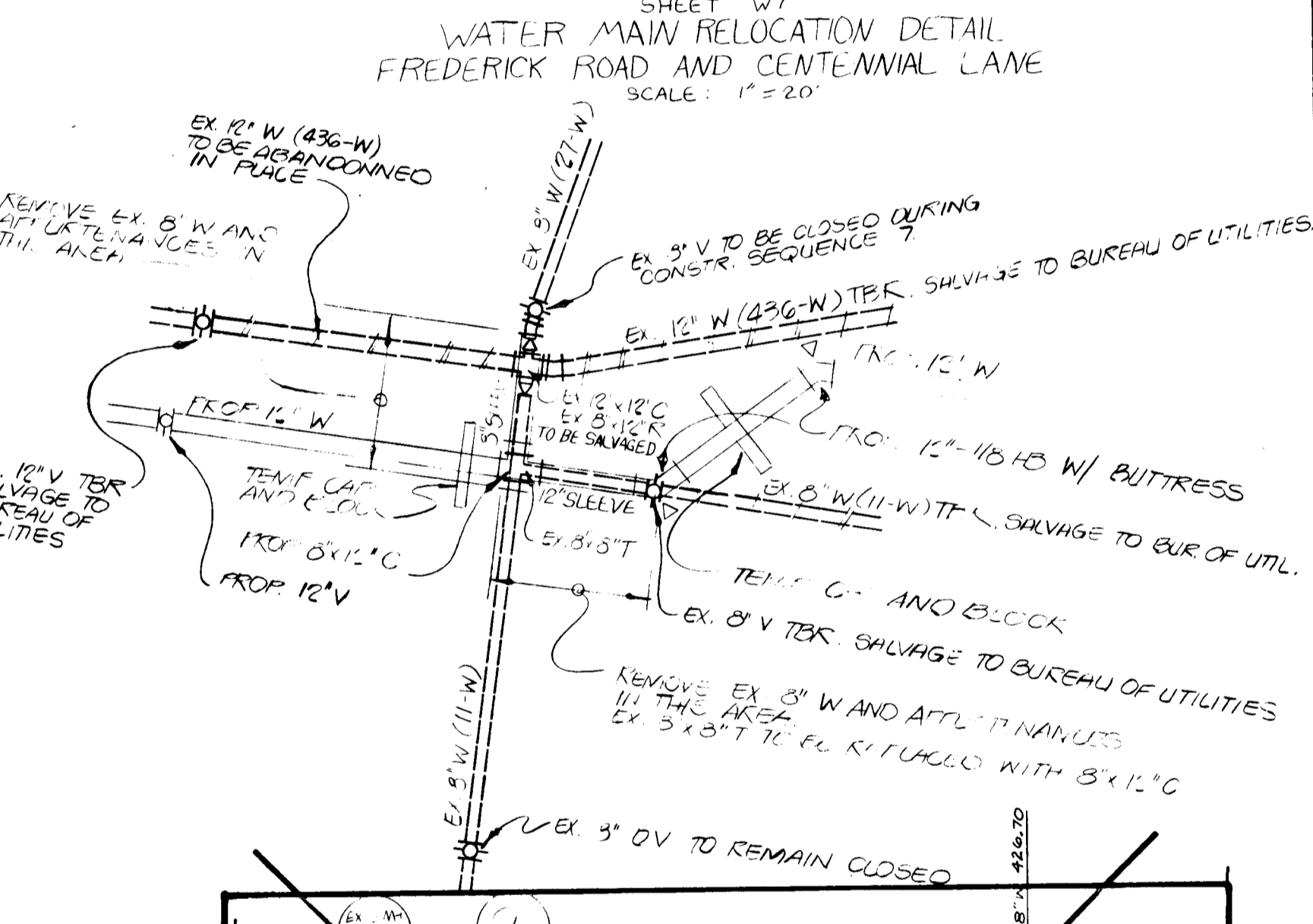
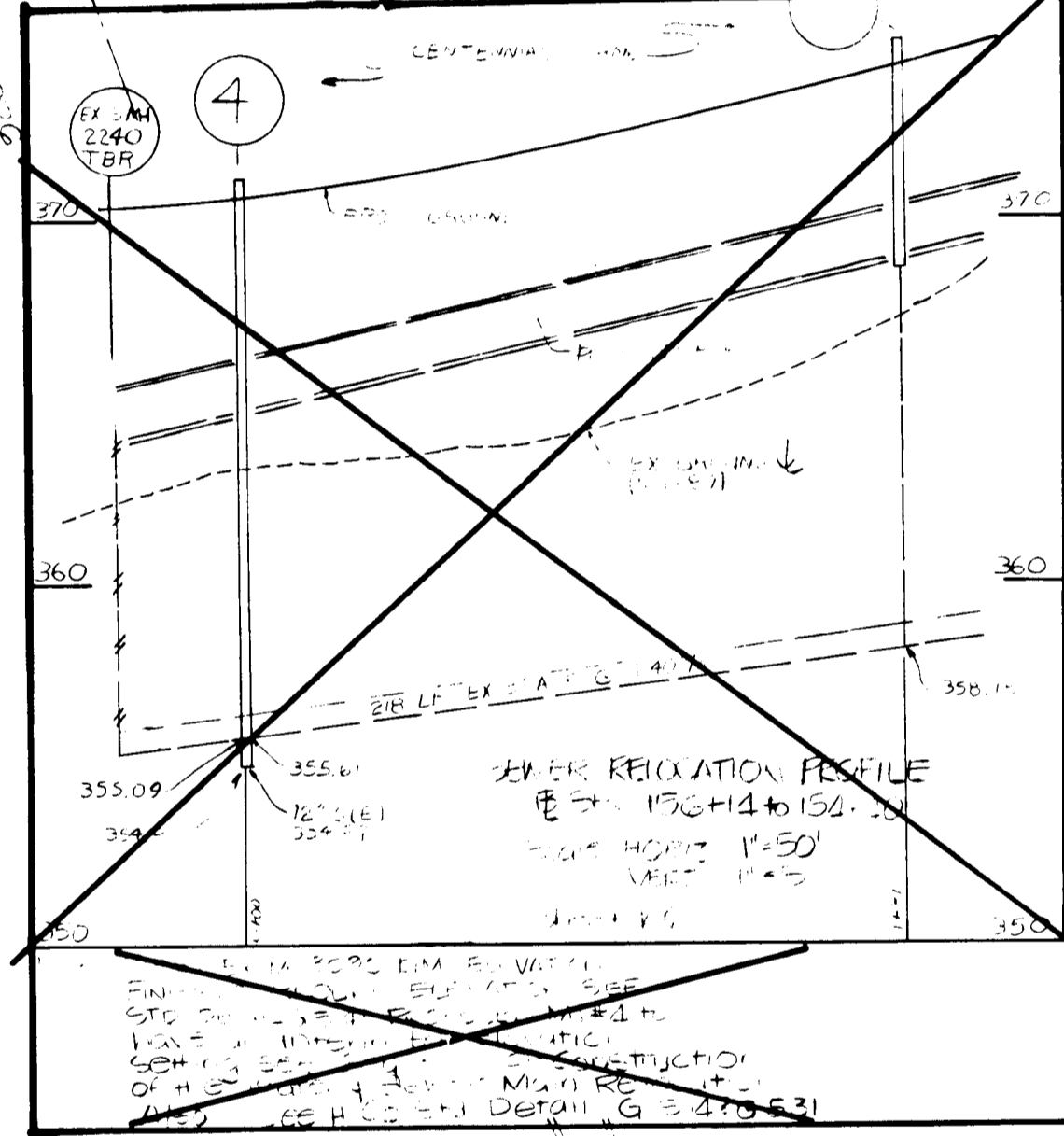
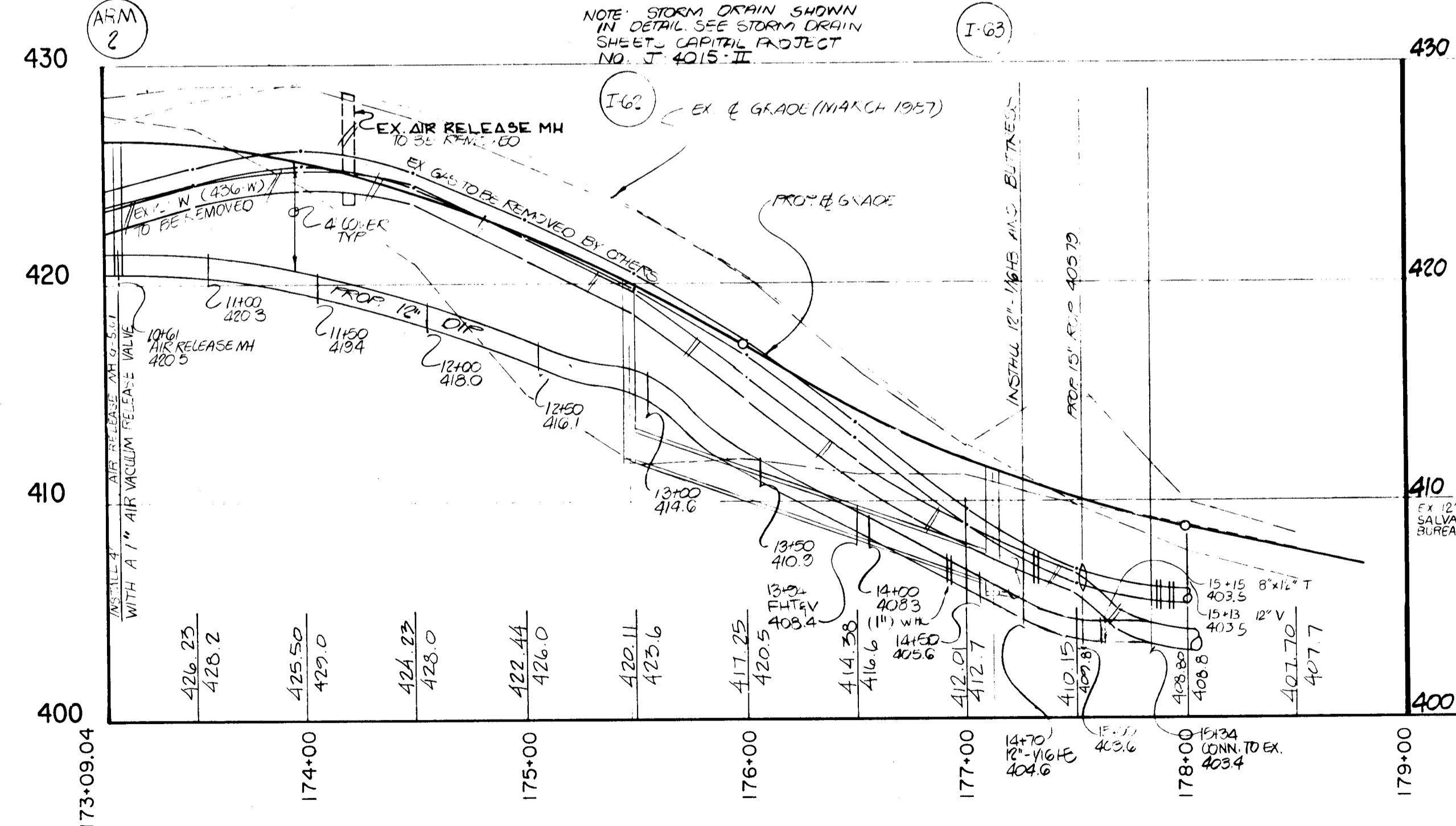
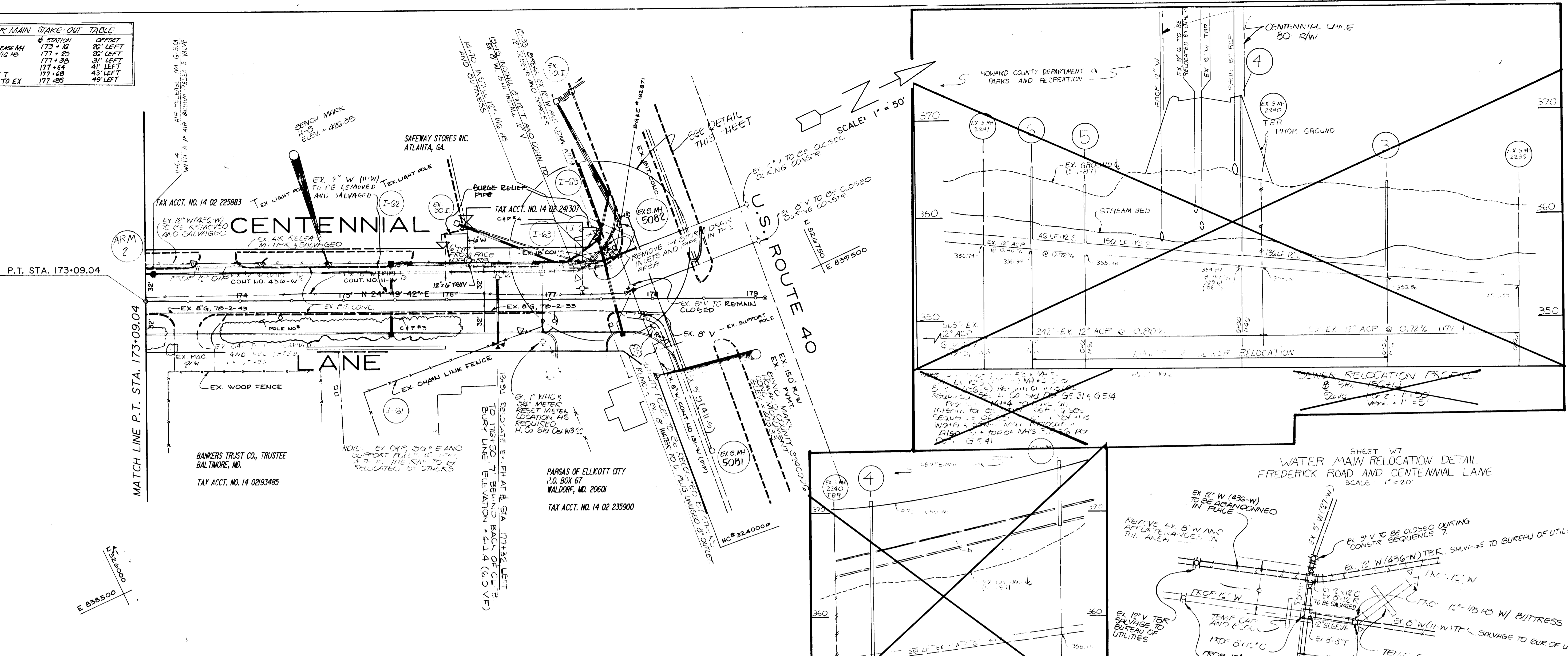
**WATER & SEWER RELOCATION  
 PLAN & PROFILE**  
 STA. 160+50 TO STA. 173+09.04  
 CENTENNIAL LANE

600' SCALE MAP NO. 24 BLOCK NO.

**CENTENNIAL LANE**  
 STATION 136+00 TO U.S. ROUTE 40  
 CAPITAL PROJECT W-8156 CONTRACT NO. 24-1726-A  
 ELECTION DISTRICT NO. 2  
 HOWARD COUNTY, MARYLAND

SCALE AS SHOWN  
 SHEET 4 OF 5

AIR RELEASE MH	STATION	OFFSET
12" W (11" W)	173+10	20' LEFT
12" W (11" W)	177+20	20' LEFT
12" W (11" W)	177+30	31' LEFT
12" W (11" W)	177+40	41' LEFT
6" x 12" T	177+48	43' LEFT
CONN TO EX	177+85	49' LEFT



REVISIONS: NO. CD, COMMENTS: 0-25-88, 1-25-88, 2-25-88, 3-25-88, 4-25-88, 5-25-88, 6-25-88, 7-25-88, 8-25-88, 9-25-88, 10-25-88, 11-25-88, 12-25-88, 1-25-89, 2-25-89, 3-25-89, 4-25-89, 5-25-89, 6-25-89, 7-25-89, 8-25-89, 9-25-89, 10-25-89, 11-25-89, 12-25-89, 1-25-90, 2-25-90, 3-25-90, 4-25-90, 5-25-90, 6-25-90, 7-25-90, 8-25-90, 9-25-90, 10-25-90, 11-25-90, 12-25-90, 1-25-91, 2-25-91, 3-25-91, 4-25-91, 5-25-91, 6-25-91, 7-25-91, 8-25-91, 9-25-91, 10-25-91, 11-25-91, 12-25-91, 1-25-92, 2-25-92, 3-25-92, 4-25-92, 5-25-92, 6-25-92, 7-25-92, 8-25-92, 9-25-92, 10-25-92, 11-25-92, 12-25-92, 1-25-93, 2-25-93, 3-25-93, 4-25-93, 5-25-93, 6-25-93, 7-25-93, 8-25-93, 9-25-93, 10-25-93, 11-25-93, 12-25-93, 1-25-94, 2-25-94, 3-25-94, 4-25-94, 5-25-94, 6-25-94, 7-25-94, 8-25-94, 9-25-94, 10-25-94, 11-25-94, 12-25-94, 1-25-95, 2-25-95, 3-25-95, 4-25-95, 5-25-95, 6-25-95, 7-25-95, 8-25-95, 9-25-95, 10-25-95, 11-25-95, 12-25-95, 1-25-96, 2-25-96, 3-25-96, 4-25-96, 5-25-96, 6-25-96, 7-25-96, 8-25-96, 9-25-96, 10-25-96, 11-25-96, 12-25-96, 1-25-97, 2-25-97, 3-25-97, 4-25-97, 5-25-97, 6-25-97, 7-25-97, 8-25-97, 9-25-97, 10-25-97, 11-25-97, 12-25-97, 1-25-98, 2-25-98, 3-25-98, 4-25-98, 5-25-98, 6-25-98, 7-25-98, 8-25-98, 9-25-98, 10-25-98, 11-25-98, 12-25-98, 1-25-99, 2-25-99, 3-25-99, 4-25-99, 5-25-99, 6-25-99, 7-25-99, 8-25-99, 9-25-99, 10-25-99, 11-25-99, 12-25-99, 1-2000, 2-2000, 3-2000, 4-2000, 5-2000, 6-2000, 7-2000, 8-2000, 9-2000, 10-2000, 11-2000, 12-2000, 1-2001, 2-2001, 3-2001, 4-2001, 5-2001, 6-2001, 7-2001, 8-2001, 9-2001, 10-2001, 11-2001, 12-2001, 1-2002, 2-2002, 3-2002, 4-2002, 5-2002, 6-2002, 7-2002, 8-2002, 9-2002, 10-2002, 11-2002, 12-2002, 1-2003, 2-2003, 3-2003, 4-2003, 5-2003, 6-2003, 7-2003, 8-2003, 9-2003, 10-2003, 11-2003, 12-2003, 1-2004, 2-2004, 3-2004, 4-2004, 5-2004, 6-2004, 7-2004, 8-2004, 9-2004, 10-2004, 11-2004, 12-2004, 1-2005, 2-2005, 3-2005, 4-2005, 5-2005, 6-2005, 7-2005, 8-2005, 9-2005, 10-2005, 11-2005, 12-2005, 1-2006, 2-2006, 3-2006, 4-2006, 5-2006, 6-2006, 7-2006, 8-2006, 9-2006, 10-2006, 11-2006, 12-2006, 1-2007, 2-2007, 3-2007, 4-2007, 5-2007, 6-2007, 7-2007, 8-2007, 9-2007, 10-2007, 11-2007, 12-2007, 1-2008, 2-2008, 3-2008, 4-2008, 5-2008, 6-2008, 7-2008, 8-2008, 9-2008, 10-2008, 11-2008, 12-2008, 1-2009, 2-2009, 3-2009, 4-2009, 5-2009, 6-2009, 7-2009, 8-2009, 9-2009, 10-2009, 11-2009, 12-2009, 1-2010, 2-2010, 3-2010, 4-2010, 5-2010, 6-2010, 7-2010, 8-2010, 9-2010, 10-2010, 11-2010, 12-2010, 1-2011, 2-2011, 3-2011, 4-2011, 5-2011, 6-2011, 7-2011, 8-2011, 9-2011, 10-2011, 11-2011, 12-2011, 1-2012, 2-2012, 3-2012, 4-2012, 5-2012, 6-2012, 7-2012, 8-2012, 9-2012, 10-2012, 11-2012, 12-2012, 1-2013, 2-2013, 3-2013, 4-2013, 5-2013, 6-2013, 7-2013, 8-2013, 9-2013, 10-2013, 11-2013, 12-2013, 1-2014, 2-2014, 3-2014, 4-2014, 5-2014, 6-2014, 7-2014, 8-2014, 9-2014, 10-2014, 11-2014, 12-2014, 1-2015, 2-2015, 3-2015, 4-2015, 5-2015, 6-2015, 7-2015, 8-2015, 9-2015, 10-2015, 11-2015, 12-2015, 1-2016, 2-2016, 3-2016, 4-2016, 5-2016, 6-2016, 7-2016, 8-2016, 9-2016, 10-2016, 11-2016, 12-2016, 1-2017, 2-2017, 3-2017, 4-2017, 5-2017, 6-2017, 7-2017, 8-2017, 9-2017, 10-2017, 11-2017, 12-2017, 1-2018, 2-2018, 3-2018, 4-2018, 5-2018, 6-2018, 7-2018, 8-2018, 9-2018, 10-2018, 11-2018, 12-2018, 1-2019, 2-2019, 3-2019, 4-2019, 5-2019, 6-2019, 7-2019, 8-2019, 9-2019, 10-2019, 11-2019, 12-2019, 1-2020, 2-2020, 3-2020, 4-2020, 5-2020, 6-2020, 7-2020, 8-2020, 9-2020, 10-2020, 11-2020, 12-2020, 1-2021, 2-2021, 3-2021, 4-2021, 5-2021, 6-2021, 7-2021, 8-2021, 9-2021, 10-2021, 11-2021, 12-2021, 1-2022, 2-2022, 3-2022, 4-2022, 5-2022, 6-2022, 7-2022, 8-2022, 9-2022, 10-2022, 11-2022, 12-2022, 1-2023, 2-2023, 3-2023, 4-2023, 5-2023, 6-2023, 7-2023, 8-2023, 9-2023, 10-2023, 11-2023, 12-2023, 1-2024, 2-2024, 3-2024, 4-2024, 5-2024, 6-2024, 7-2024, 8-2024, 9-2024, 10-2024, 11-2024, 12-2024, 1-2025, 2-2025, 3-2025, 4-2025, 5-2025, 6-2025, 7-2025, 8-2025, 9-2025, 10-2025, 11-2025, 12-2025, 1-2026, 2-2026, 3-2026, 4-2026, 5-2026, 6-2026, 7-2026, 8-2026, 9-2026, 10-2026, 11-2026, 12-2026, 1-2027, 2-2027, 3-2027, 4-2027, 5-2027, 6-2027, 7-2027, 8-2027, 9-2027, 10-2027, 11-2027, 12-2027, 1-2028, 2-2028, 3-2028, 4-2028, 5-2028, 6-2028, 7-2028, 8-2028, 9-2028, 10-2028, 11-2028, 12-2028, 1-2029, 2-2029, 3-2029, 4-2029, 5-2029, 6-2029, 7-2029, 8-2029, 9-2029, 10-2029, 11-2029, 12-2029, 1-2030, 2-2030, 3-2030, 4-2030, 5-2030, 6-2030, 7-2030, 8-2030, 9-2030, 10-2030, 11-2030, 12-2030, 1-2031, 2-2031, 3-2031, 4-2031, 5-2031, 6-2031, 7-2031, 8-2031, 9-2031, 10-2031, 11-2031, 12-2031, 1-2032, 2-2032, 3-2032, 4-2032, 5-2032, 6-2032, 7-2032, 8-2032, 9-2032, 10-2032, 11-2032, 12-2032, 1-2033, 2-2033, 3-2033, 4-2033, 5-2033, 6-2033, 7-2033, 8-2033, 9-2033, 10-2033, 11-2033, 12-2033, 1-2034, 2-2034, 3-2034, 4-2034, 5-2034, 6-2034, 7-2034, 8-2034, 9-2034, 10-2034, 11-2034, 12-2034, 1-2035, 2-2035, 3-2035, 4-2035, 5-2035, 6-2035, 7-2035, 8-2035, 9-2035, 10-2035, 11-2035, 12-2035, 1-2036, 2-2036, 3-2036, 4-2036, 5-2036, 6-2036, 7-2036, 8-2036, 9-2036, 10-2036, 11-2036, 12-2036, 1-2037, 2-2037, 3-2037, 4-2037, 5-2037, 6-2037, 7-2037, 8-2037, 9-2037, 10-2037, 11-2037, 12-2037, 1-2038, 2-2038, 3-2038, 4-2038, 5-2038, 6-2038, 7-2038, 8-2038, 9-2038, 10-2038, 11-2038, 12-2038, 1-2039, 2-2039, 3-2039, 4-2039, 5-2039, 6-2039, 7-2039, 8-2039, 9-2039, 10-2039, 11-2039, 12-2039, 1-2040, 2-2040, 3-2040, 4-2040, 5-2040, 6-2040, 7-2040, 8-2040, 9-2040, 10-2040, 11-2040, 12-2040, 1-2041, 2-2041, 3-2041, 4-2041, 5-2041, 6-2041, 7-2041, 8-2041, 9-2041, 10-2041, 11-2041, 12-2041, 1-2042, 2-2042, 3-2042, 4-2042, 5-2042, 6-2042, 7-2042, 8-2042, 9-2042, 10-2042, 11-2042, 12-2042, 1-2043, 2-2043, 3-2043, 4-2043, 5-2043, 6-2043, 7-2043, 8-2043, 9-2043, 10-2043, 11-2043, 12-2043, 1-2044, 2-2044, 3-2044, 4-2044, 5-2044, 6-2044, 7-2044, 8-2044, 9-2044, 10-2044, 11-2044, 12-2044, 1-2045, 2-2045, 3-2045, 4-2045, 5-2045, 6-2045, 7-2045, 8-2045, 9-2045, 10-2045, 11-2045, 12-2045, 1-2046, 2-2046, 3-2046, 4-2046, 5-2046, 6-2046, 7-2046, 8-2046, 9-2046, 10-2046, 11-2046, 12-2046, 1-2047, 2-2047, 3-2047, 4-2047, 5-2047, 6-2047, 7-2047, 8-2047, 9-2047, 10-2047, 11-2047, 12-2047, 1-2048, 2-2048, 3-2048, 4-2048, 5-2048, 6-2048, 7-2048, 8-2048, 9-2048, 10-2048, 11-2048, 12-2048, 1-2049, 2-2049, 3-2049, 4-2049, 5-2049, 6-2049, 7-2049, 8-2049, 9-2049, 10-2049, 11-2049, 12-2049, 1-2050, 2-2050, 3-2050, 4-2050, 5-2050, 6-2050, 7-2050, 8-2050, 9-2050, 10-2050, 11-2050, 12-2050, 1-2051, 2-2051, 3-2051, 4-2051, 5-2051, 6-2051, 7-2051, 8-2051, 9-2051, 10-2051, 11-2051, 12-2051, 1-2052, 2-2052, 3-2052, 4-2052, 5-2052, 6-2052, 7-2052, 8-2052, 9-2052, 10-2052, 11-2052, 12-2052, 1-2053, 2-2053, 3-2053, 4-2053, 5-2053, 6-2053, 7-2053, 8-2053, 9-2053, 10-2053, 11-2053, 12-2053, 1-2054, 2-2054, 3-2054, 4-2054, 5-2054, 6-2054, 7-2054, 8-2054, 9-2054, 10-2054, 11-2054, 12-2054, 1-2055, 2-2055, 3-2055, 4-2055, 5-2055, 6-2055, 7-2055, 8-2055, 9-2055, 10-2055, 11-2055, 12-2055, 1-2056, 2-2056, 3-2056, 4-2056, 5-2056, 6-2056, 7-2056, 8-2056, 9-2056, 10-2056, 11-2056, 12-2056, 1-2057, 2-2057, 3-2057, 4-2057, 5-2057, 6-2057, 7-2057, 8-2057, 9-2057, 10-2057, 11-2057, 12-2057, 1-2058, 2-2058, 3-2058, 4-2058, 5-2058, 6-2058, 7-2058, 8-2058, 9-2058, 10-2058, 11-2058, 12-2058, 1-2059, 2-2059, 3-2059, 4-2059, 5-2059, 6-2059, 7-2059, 8-2059, 9-2059, 10-2059, 11-2059, 12-2059, 1-2060, 2-2060, 3-2060, 4-2060, 5-2060, 6-2060, 7-2060, 8-2060, 9-2060, 10-2060, 11-2060, 12-2060, 1-2061, 2-2061, 3-2061, 4-2061, 5-2061, 6-2061, 7-2061, 8-2061, 9-2061, 10-2061, 11-2061, 12-2061, 1-2062, 2-2062, 3-2062, 4-2062, 5-2062, 6-2062, 7-2062, 8-2062, 9-2062, 10-2062, 11-2062, 12-2062, 1-2063, 2-2063, 3-2063, 4-2063, 5-2063, 6-2063, 7-2063, 8-2063, 9-2063, 10-2063, 11-2063, 12-2063, 1-2064, 2-2064, 3-2064, 4-2064, 5-2064, 6-2064, 7-2064, 8-2064, 9-2064, 10-2064, 11-2064, 12-2064, 1-2065, 2-2065, 3-2065, 4-2065, 5-2065, 6-2065, 7-2065, 8-2065, 9-2065, 10-2065, 11-2065, 12-2065, 1-2066, 2-2066, 3-2066, 4-2066, 5-2066, 6-2066, 7-2066, 8-2066, 9-2066, 10-2066, 11-2066, 12-2066, 1-2067, 2-2067, 3-2067, 4-2067, 5-2067, 6-2067, 7-2067, 8-2067, 9-2067, 10-2067, 11-2067, 12-2067, 1-2068, 2-2068, 3-2068, 4-2068, 5-2068, 6-2068, 7-2068, 8-2068, 9-2068, 10-2068, 11-2068, 12-2068, 1-2069, 2-2069, 3-2069, 4-2069, 5-2069, 6-2069, 7-2069, 8-2069, 9-2069, 10-2069, 11-2069, 12-2069, 1-2070, 2-2070, 3-2070, 4-2070, 5-2070, 6-2070, 7-2070, 8-2070, 9-2070, 10-2070, 11-2070, 12-2070, 1-2071, 2-2071, 3-2071, 4-2071, 5-2071, 6-2071, 7-2071, 8-2071, 9-2071, 10-2071, 11-2071, 12-2071, 1-2072, 2-2072, 3-2072, 4-2072, 5-2072, 6-2072, 7-2072, 8-2072, 9-2072, 10-2072, 11-2072, 12-2072, 1-2073, 2-2073, 3-2073, 4-2073, 5-2073, 6-2073, 7-2073, 8-2073, 9-2073, 10-2073, 11-2073, 12-2073, 1-2074, 2-2074, 3-2074, 4-2074, 5-2074, 6-2074, 7-2074, 8-2074, 9-2074, 10-2074, 11-2074, 12-2074, 1-2075, 2-2075, 3-2075, 4-2075, 5-2075, 6-2075, 7-2075, 8-2075, 9-2075, 10-2075, 11-2075, 12-2075, 1-2076, 2-2076, 3-2076, 4-2076, 5-2076, 6-2076, 7-2076, 8-2076, 9-2076, 10-2076, 11-2076, 12-2076, 1-2077, 2-2077, 3-2077, 4-2077, 5-2077, 6-2077, 7-2077, 8-2077, 9-2077, 10-2077, 11-2077, 12-2077, 1-2078, 2-2078, 3-2078, 4-2078, 5-2078, 6-2078, 7-2078, 8-2078, 9-2078, 10-2078, 11-2078, 12-2078, 1-2079, 2-2079, 3-2079, 4-2079, 5-2079, 6-2079, 7-2079, 8-2079, 9-2079, 10-2079, 11-2079, 12-2079, 1-2080, 2-2080, 3-2080, 4-2080, 5-2080, 6-2080, 7-2080, 8-2080, 9-2080, 10-2080, 11-2080, 12-2080, 1-2081, 2-2081, 3-2081, 4-2081, 5-2081, 6-2081, 7-2081, 8-2081, 9-2081, 10-2081, 11-2081, 12-2081, 1-2082, 2-2082, 3-2082, 4-2082, 5-2082, 6-2082, 7-2082, 8-2082, 9-2082, 10-2082, 11-2082, 12-2082, 1-2083, 2-2083, 3-2083, 4-2083, 5-2083, 6-2083, 7-2083, 8-2083, 9-2083, 10-2083, 11-2083, 12-2083, 1-2084, 2-2084, 3-2084, 4-2084, 5-2084, 6-2084, 7-2084, 8-2084, 9-2084, 10-2084, 11-2084, 12-2084, 1-2085, 2-2085, 3-2085, 4-2085, 5-2085, 6-2085, 7-2085, 8-2085, 9-2085, 10-2085, 11-2085, 12-2085, 1-2086, 2-2086, 3-2086, 4-2086, 5-2086, 6-2086, 7-2086, 8-2086, 9-2086, 10-2086, 11-2086, 12-2086, 1-2087, 2-2087, 3-2087, 4-2087, 5-2087, 6-2087, 7-2087, 8-2087, 9-2087, 10-2087, 11-2087, 12-2087, 1-2088, 2-2088, 3-2088, 4-2088, 5-2088, 6-2088, 7-2088, 8-2088, 9-2088, 10-2088, 11-2088, 12-2088, 1-2089, 2-2089, 3-2089, 4-2089, 5-2089, 6-2089, 7-2089, 8-2089, 9-2089, 10-2089, 11-2089, 12-2089, 1-2090, 2-2090, 3-2090, 4-2090, 5-2090, 6-2090, 7-2090, 8-2090, 9-2090, 10-2090, 11-2090, 12-2090, 1-2091, 2-2091, 3-2091, 4-2091, 5-2091, 6-2091, 7-2091, 8-2091, 9-2091, 10-2091, 11-2091, 12-2091, 1-2092, 2-2092, 3-2092, 4-2092, 5-2092, 6-2092, 7-2092, 8-2092, 9-2092, 10-2092, 11-2092, 12-2092, 1-2093, 2-2093, 3-2093, 4-2093, 5-2093, 6-2093, 7-2093, 8-2093, 9-2093, 10-2093, 11-2093, 12-2093, 1-2094, 2-2094, 3-2094, 4-2094, 5-2094, 6-2094, 7-2094, 8-2094, 9-2094, 10-2094, 11-2094, 12-2094, 1-2095, 2-2095, 3-2095, 4-2095, 5-20