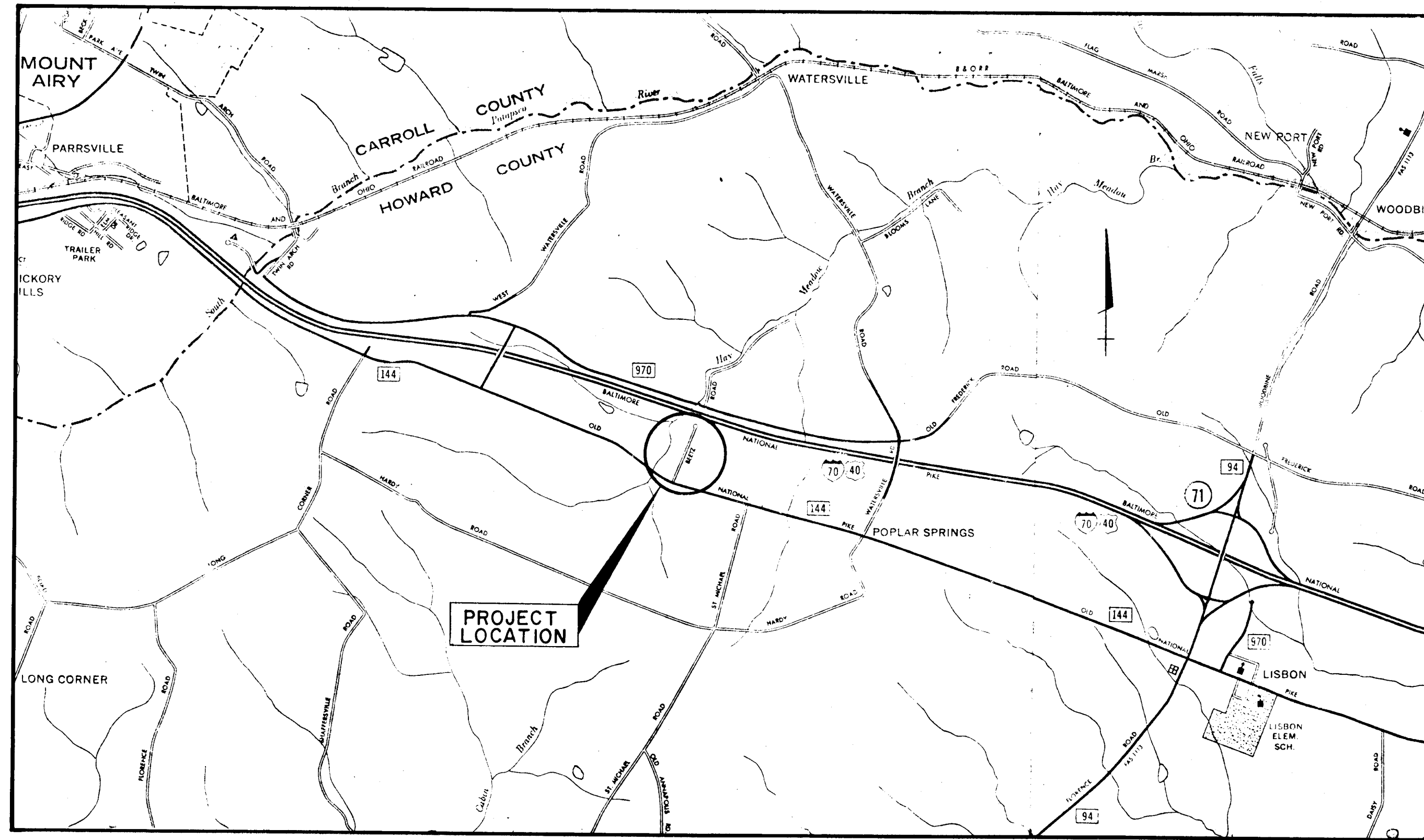


HOWARD COUNTY, MARYLAND  
DEPARTMENT OF PUBLIC WORKS

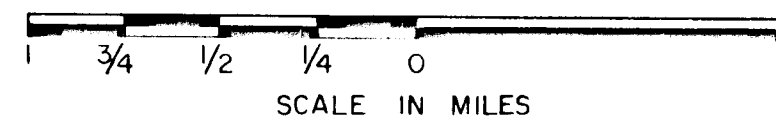
BEEZ ROAD IMPROVEMENTS  
CAPITAL PROJECT NO. J-1-4075

INDEX OF DRAWINGS

1. TITLE SHEET
2. TYPICAL SECTIONS AND DETAIL
3. PLAN AND PROFILE
4. EROSION AND SEDIMENT CONTROL PLAN



LOCATION MAP



**CERTIFICATION BY THE DEVELOPER**  
"I/WE CERTIFY THAT ALL DEVELOPMENT AND/OR CONSTRUCTION WILL BE DONE ACCORDING TO THIS PLAN, AND THAT THE RESPONSIBLE PERSONAL INVOLVED IN THIS CONSTRUCTION PROJECT WILL HAVE A CERTIFICATE OF ATTENDANCE AT THE DEPARTMENT OF NATIONAL RESOURCES APPROVED TRAINING PROGRAM FOR THE CONTROL OF SEDIMENT AND EROSION BEFORE BEGINNING THE PROJECT."

\_\_\_\_\_  
SIGNATURE OF DEVELOPER

\_\_\_\_\_  
DATE

**CERTIFICATION BY THE ENGINEER**  
"I CERTIFY THAT THIS PLAN FOR EROSION AND SEDIMENT CONTROL REPRESENTS A PRACTICAL AND WORKABLE PLAN BASED ON MY PERSONAL KNOWLEDGE OF THE SITE CONDITIONS AND THAT IT WAS PREPARED IN ACCORDANCE WITH THE REQUIREMENTS OF THE HOWARD SOIL CONSERVATION DISTRICT"

\_\_\_\_\_  
SIGNATURE OF ENGINEER

\_\_\_\_\_  
DATE

REVIEWED FOR Howard S.C.D.  
NAME  
AND MEETS TECHNICAL REQUIREMENTS

\_\_\_\_\_  
SIGNATURE

DATE 12-7-82

U.S. SOIL CONSERVATION SERVICE

THIS DEVELOPMENT PLAN IS APPROVED FOR SOIL EROSION AND SEDIMENT CONTROL BY THE HOWARD SOIL CONSERVATION DISTRICT.

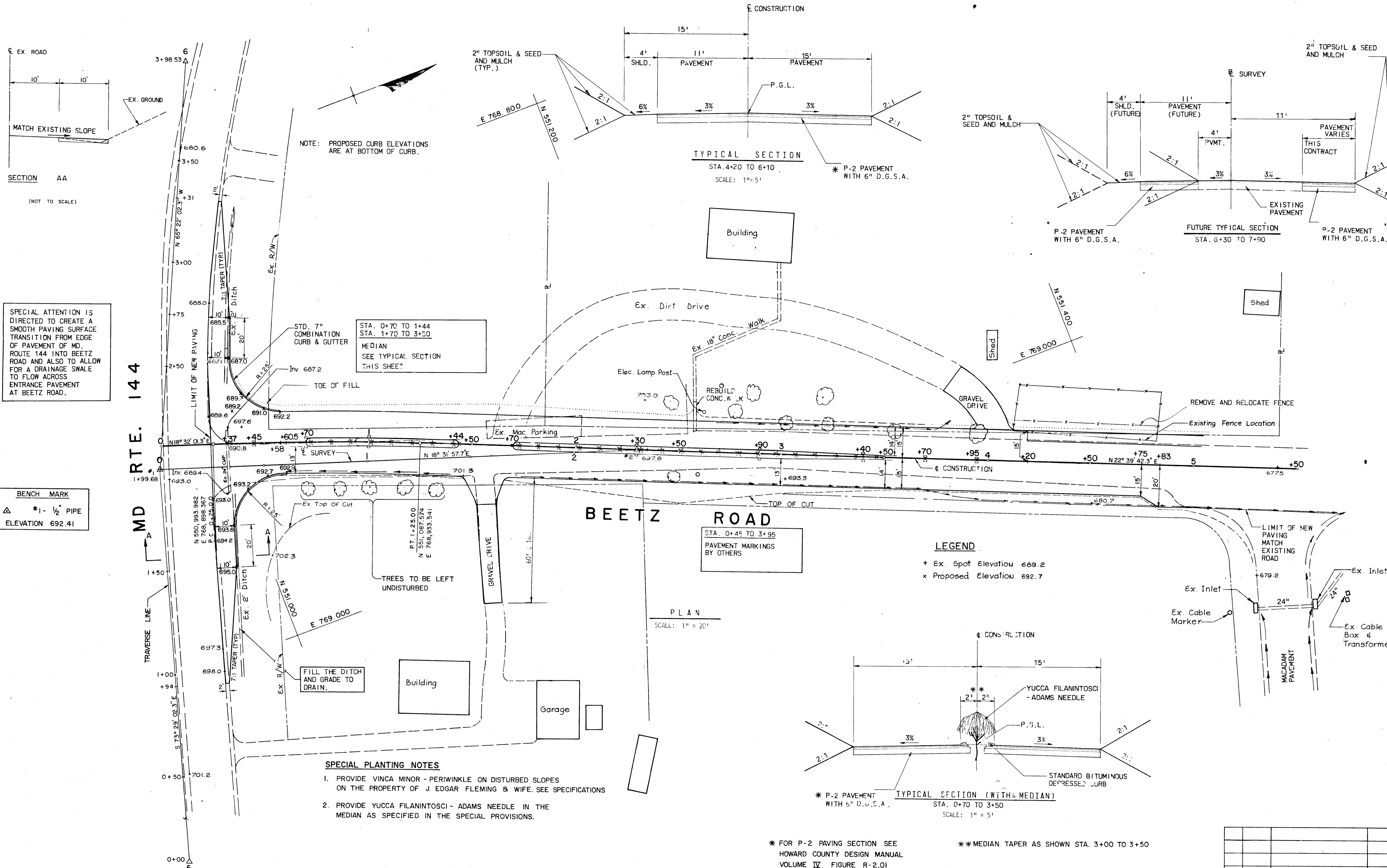
\_\_\_\_\_  
APPROVED

DATE 12-7-82

HOWARD S.C.D.

REVISIONS


C08AZ01



SPECIAL ATTENTION IS DIRECTED TO CREATE A SMOOTH PAVING SURFACE TRANSITION FROM EDGE OF PAVEMENT OF MD. ROUTE 144 INTO BEETZ ROAD AND ALSO TO ALLOW FOR A DRAINAGE SWALE TO FLOW ACROSS ENTRANCE PAVEMENT AT BEETZ ROAD.

BENCH MARK  
 ▲ #1 - 1/2" PIPE  
 ELEVATION 692.41

NOTE: PROPOSED CURB ELEVATIONS ARE AT BOTTOM OF CURB.

STA. 0+70 TO 1+44  
 STA. 1+70 TO 3+50  
 MEDIAN  
 SEE TYPICAL SECTION THIS SHEET

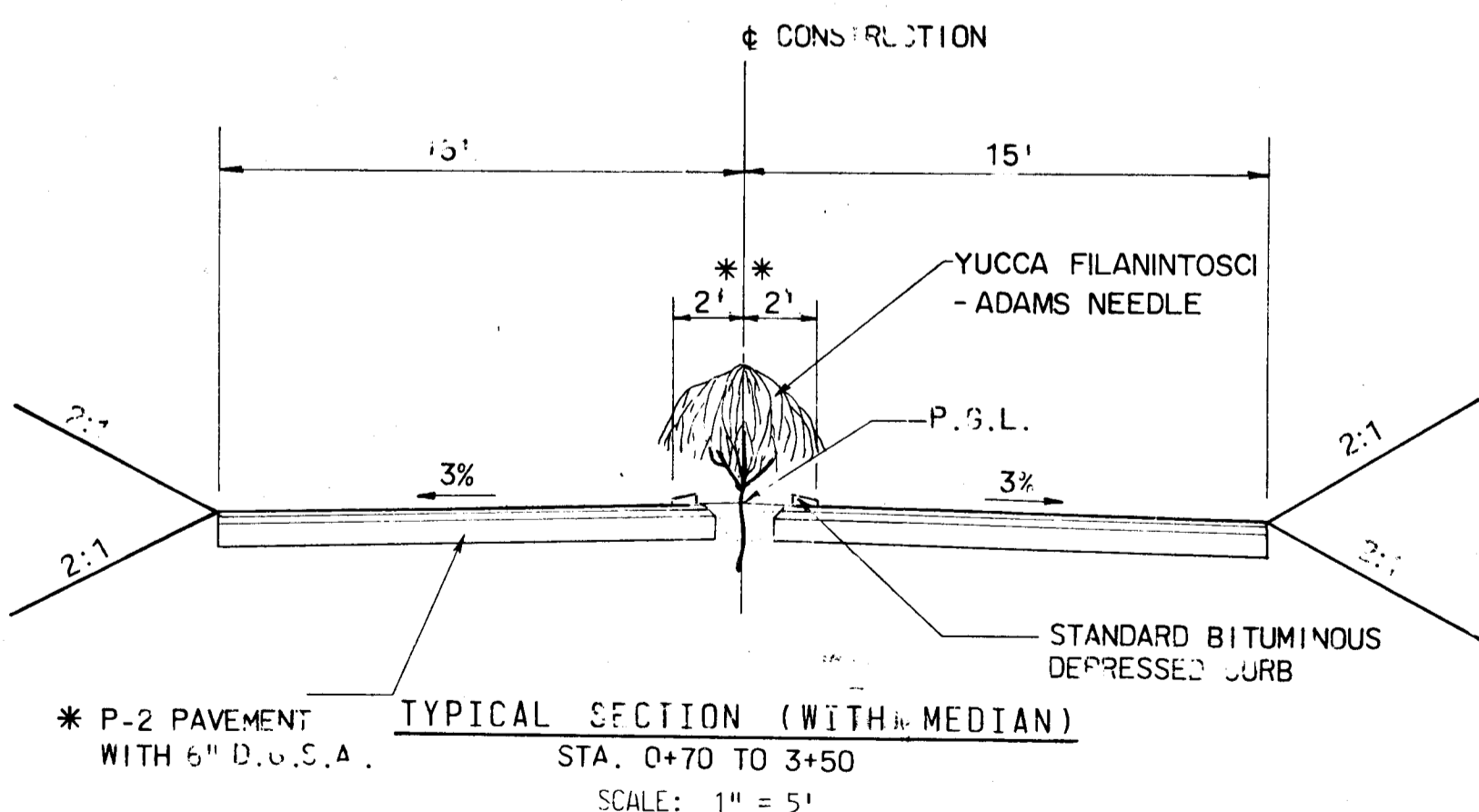
- SPECIAL PLANTING NOTES**
1. PROVIDE VINCA MINOR - PERIWINKLE ON DISTURBED SLOPES ON THE PROPERTY OF J. EDGAR FLEMING & WIFE. SEE SPECIFICATIONS
  2. PROVIDE YUCCA FILANINTOSCI - ADAMS NEEDLE IN THE MEDIAN AS SPECIFIED IN THE SPECIAL PROVISIONS.

**TYPICAL SECTION**  
 STA. 4+20 TO 6+10  
 SCALE: 1" = 5'

**FUTURE TYPICAL SECTION**  
 STA. 6+30 TO 7+90

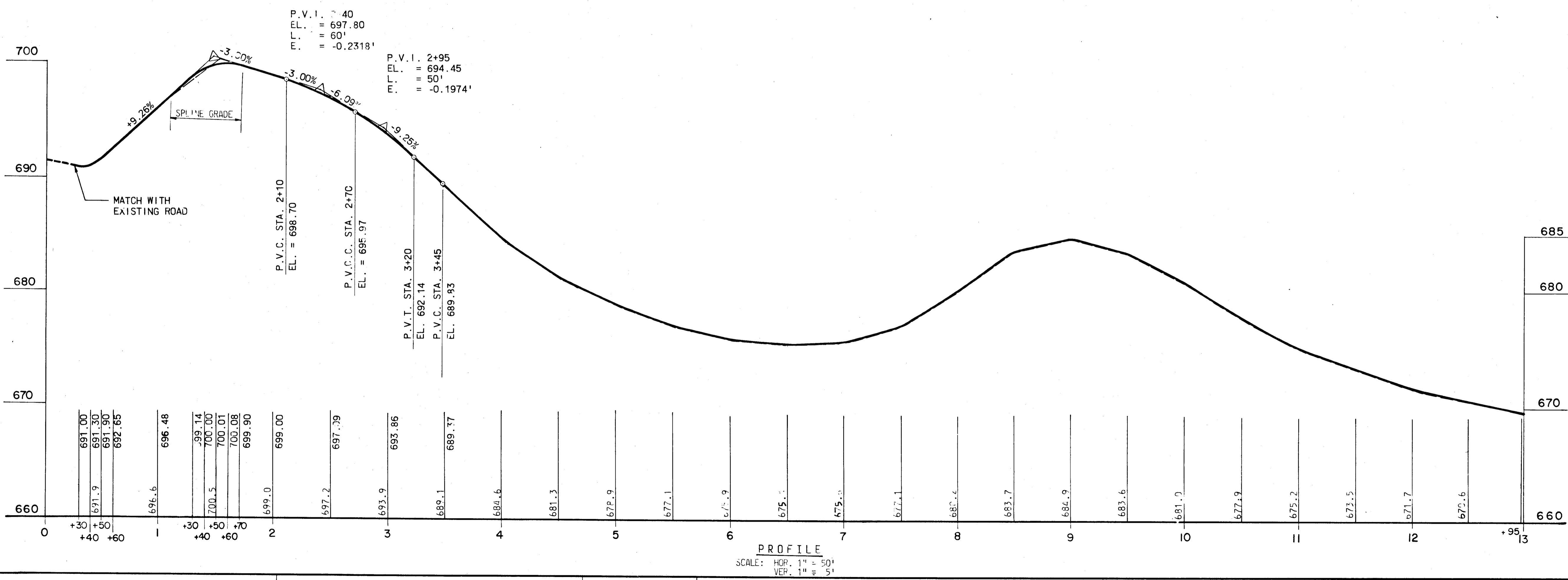
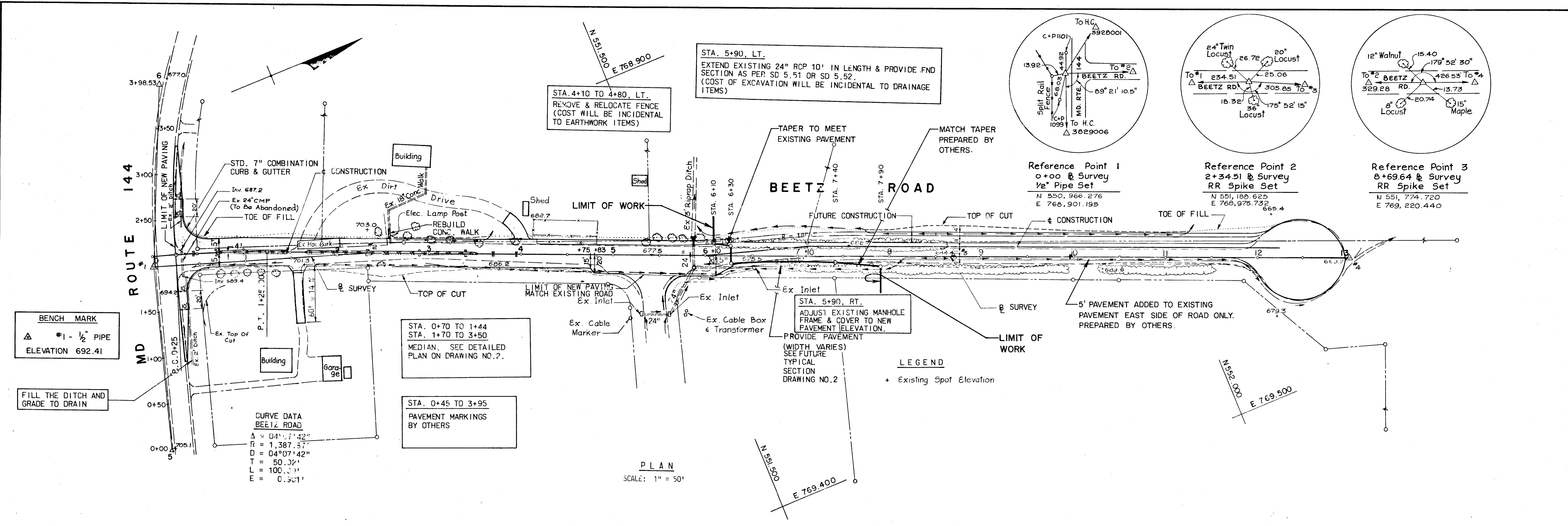
**LEGEND**  
 + Ex. Spot Elevation 689.2  
 x Proposed Elevation 692.7

**PLAN**  
 SCALE: 1" = 20'

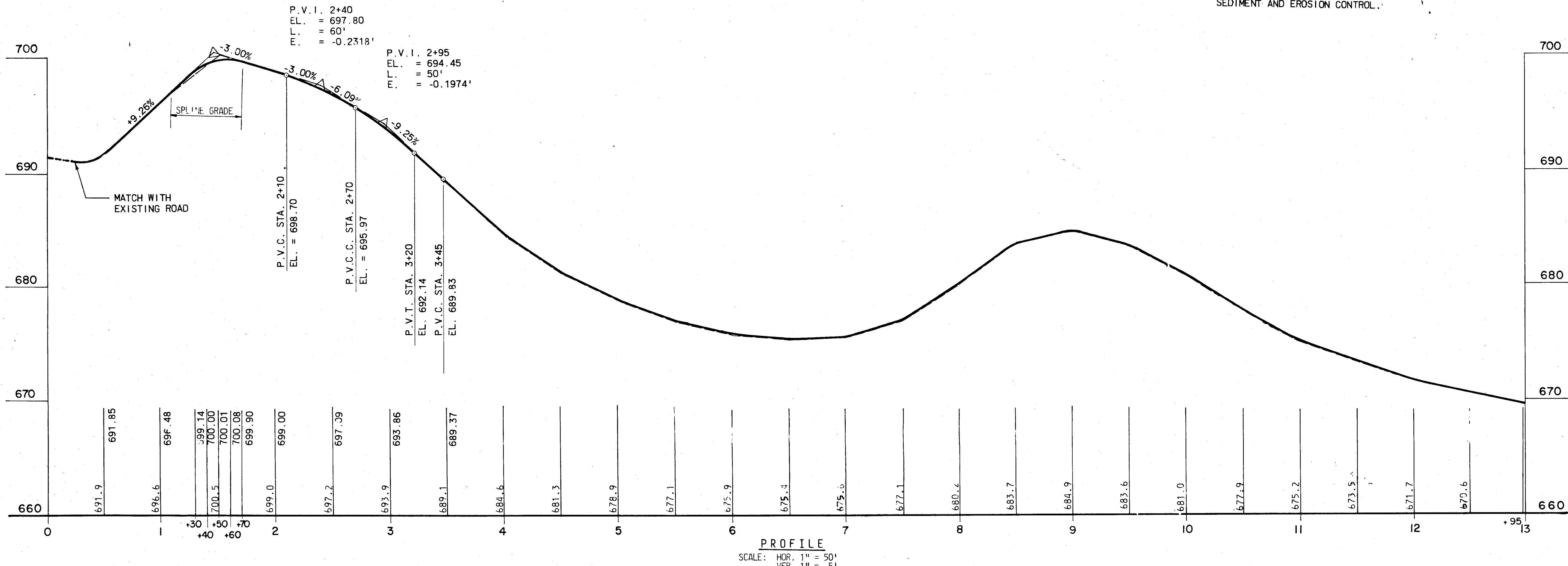
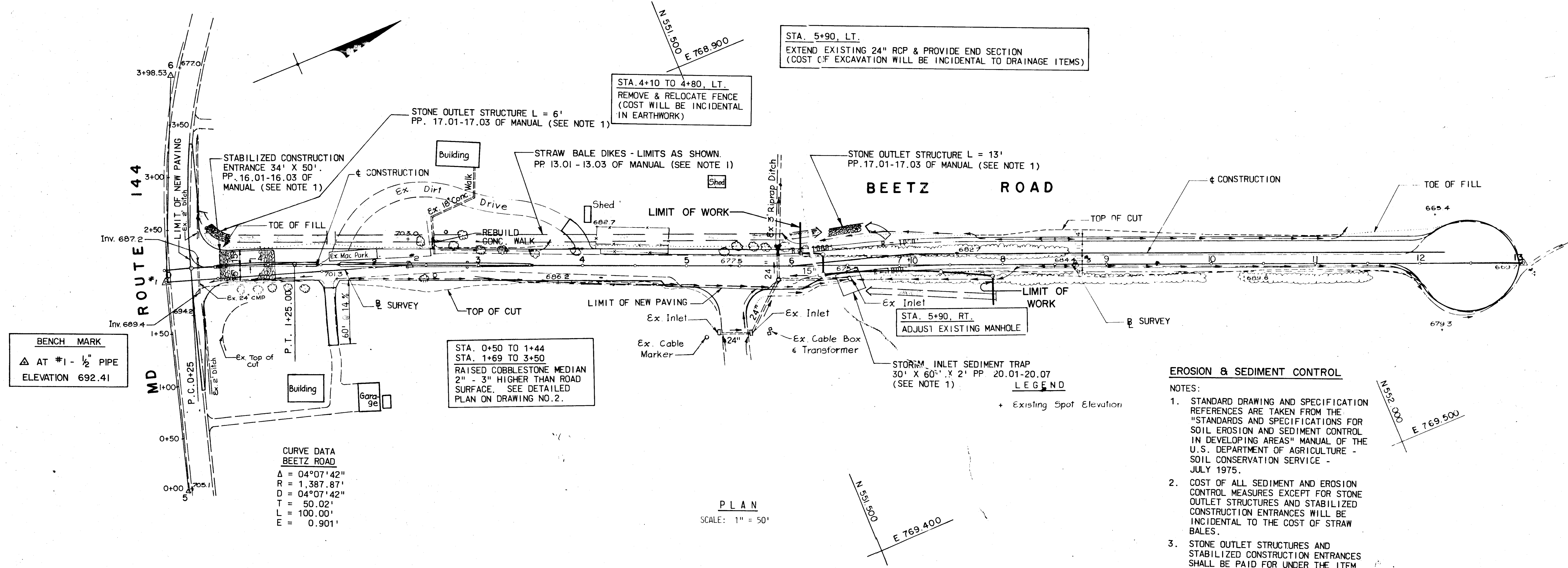


\* FOR P-2 PAVING SECTION SEE HOWARD COUNTY DESIGN MANUAL VOLUME IV, FIGURE R-2.01

\*\* MEDIAN TAPER AS SHOWN STA. 3+00 TO 3+50



DEPARTMENT OF PUBLIC WORKS HOWARD COUNTY, MARYLAND DIRECTOR OF PUBLIC WORKS DATE: _____ CHIEF BUREAU OF ENGINEERING DATE: _____ CHIEF ROADS, BRIDGES, STORM DRAINS DIVISION	<b>KIDDE CONSULTANTS, INC.</b> ENGINEERS • ARCHITECTS • PLANNERS BALTIMORE, MARYLAND	<b>PLAN AND PROFILE</b>	<b>BEETZ ROAD IMPROVEMENTS</b> CAPITAL PROJECT NO. J-I-4075 ELECTION DISTRICT NO. 6 HOWARD COUNTY MARYLAND		D.P.K. DESIGNED BY:
			DRAWING NO. <u>3</u> OF <u>4</u>	SCALE 1" = 50'	V.Y. DRAFTED BY: J.K.D. CHECKED BY:



<p>DEPARTMENT OF PUBLIC WORKS HOWARD COUNTY, MARYLAND DIRECTOR OF PUBLIC WORKS DATE 11/17/82 CHIEF OF ENGINEERING DATE 11/17/82 CHIEF CROSSLINGS, BRIDGES, ETC</p>	<p><b>KIDDE CONSULTANTS, INC.</b> ENGINEERS • ARCHITECTS • PLANNERS BALTIMORE, MARYLAND</p>	<p>EROSION AND SEDIMENT CONTROL PLAN</p>	<p><b>BEETZ ROAD IMPROVEMENTS</b> CAPITAL PROJECT NO. J-I-4075 ELECTION DISTRICT NO. 6 HOWARD COUNTY MARYLAND</p>	<p>DRAWING NO. 4 OF 4</p>	<p>SCALE 1" = 50'</p>	<p>D.P.K. DESIGNED BY: V.Y. DRAFTED BY: J.K.D. CHECKED BY:</p>
--	---	--	---	---------------------------	-----------------------	--