

GENERAL NOTES

- Approximate location of existing mains are shown. The Contractor shall take all necessary precautions to protect existing mains and services and maintain uninterrupted service. Any damage incurred shall be repaired immediately to the satisfaction of the Engineer at the Contractor's expense.
- All horizontal controls are based on Maryland State Coordinates.
- All vertical controls are based on U.S.G.S. data.
- All pipe elevations shown are invert elevations unless otherwise noted on the plans.
- Clear all utilities by a minimum of 6". Clear all poles by 2'-0" minimum or tunnel as required. The owner has contacted the utility companies and has made arrangements for bracing of poles as shown on the drawings. In the event the Contractor's work requires the bracing of additional poles, any cost incurred by the owner for the bracing of additional poles or damages shall be deducted from money owed the Contractor. The Contractor shall coordinate with the utility companies to schedule the bracing of the poles.
- For details not shown on the drawings, and for materials and construction methods, use Howard County Design Manual, Volume IV, Standard Specifications and Details for Construction (Latest Edition). The Contractor shall have a copy of Volume IV on the job.
- Where test pits have been made on existing utilities, they are noted by the symbol at the location of the test pits. A note or notes containing the results of the test pit or pits is included on the drawings. Existing utilities in the vicinity of the proposed work for which test pits have not been dug shall be located by the contractor two weeks in advance of construction operations at his own expense.
- Contractor shall notify the following utility companies or agencies at least five working days before stating work shown on these plans:
 AT&T.....865-3803
 BGE (Contractor Services).....850-4620
 BGE (Underground Damage Control).....787-9068
 Bureau of Utilities.....313-4900
 Bell Atlantic Maryland, Inc.....597-8585
 Colonial Pipeline Co.....795-1390
 Miss Utility.....1-800-257-7777
 State Highway Administration.....531-5533
- Trees and shrubs are to be protected from damage to the maximum extent. Trees and shrubs located within the construction strip are not to be removed or damaged by the Contractor.
- Contractor shall remove trees, stumps and roots along line of excavation. Payment for such removal shall be included in the unit price bid for construction of the main.
- The contractor shall notify the Bureau of Highways, Howard County, at (410) 313-2450 at least five working days before any open cut of any County road or boring/jacking operation in County roads for laying water/sewer mains or house connections. The approval of these drawings will constitute compliance with DPW requirements per Section 18.11(a) of the Howard County Code.

Part II WATER

- All water mains shall be D.I.P. Class 52 unless otherwise noted.
- Tops of all water mains shall have a minimum of 3'-6" of cover unless otherwise noted.
- Valves adjacent to tees shall be strapped to tees.
- All fittings shall be buttressed or anchored with concrete in accordance with the Standard Details unless otherwise provided for on the drawings.
- Fire Hydrants shall be set to the bury line elevations shown on the drawings. All fire hydrants shall be installed in accordance with Standard Details. Soil around the fire hydrant shall be compacted in accordance with Section 1000 and Section 1005 of the Standard Specifications.

Part III SEWER

- All sewer mains shall be D.I.P. or P.V.C. unless otherwise noted.
- All manholes shall be 4'-0" inside diameter unless otherwise noted.
- Force mains shall be D.I.P. only.
- Manholes shown with 12" and 16" walls are for brick manholes only.
- Manholes designated W.T. in plan and profile shall have watertight frame and cover, Standard Detail G5.52, where watertight manhole frame and cover are used, set top of frame 1'-6" above finished grade unless otherwise noted on the drawings.
- House(s) with the symbol "C.N.S." indicates that cellar cannot be served.

Maintenance of Traffic

- (a) The contractor shall adhere to the requirements of Section 107.10 of the Specifications and all work necessary for the performance of maintenance of traffic shall be conducted in accordance with the requirements outlined therein. The contractor's strict attention is also directed to the fact that the following maintenance of traffic requirements must be strictly followed:
- No more trench than one-half the roadway width shall be open at any time, across a given street, so that traffic is always maintained.
 - Vehicular/Pedestrian access to all properties shall be maintained at all times.
 - Traffic shall be maintained using methods, signs, barricades, lights and incidental materials as approved in the 1984 Manual on Uniform Traffic Control devices and the Howard County Standard Specifications for Construction and subsequent revisions. The maintenance procedures shall include, but are not limited to:
 - Adequate warning signs
 - Placement of approved drum, Type I or Type II barricades every ten (10) feet between the travelled way and the construction area. When used at night, each barricade shall be equipped with an approved Type 'A', Low Intensity Flashing Warning Light.
 - One lane of traffic shall remain open at all times.
 - No more than twenty-five (25) feet of trenching and no trenches crossing a roadway shall remain open between the hours of 5 p.m. and 8 a.m. Any trench left open at night shall be covered with steel plates. The steel plates size and thickness shall be determined by the Engineer and/or Inspector in the field.

REVIEWED FOR SOIL CONSERVATION DISTRICT AND MEETS ALL TECHNICAL REQUIREMENTS

Cherie A. Egle/les 11/3/04
U.S. SOIL CONSERVATION SERVICE DATE

THIS CONSTRUCTION PLAN IS APPROVED FOR SOIL EROSION AND SEDIMENT CONTROL BY THE HOWARD COUNTY SOIL CONSERVATION DISTRICT

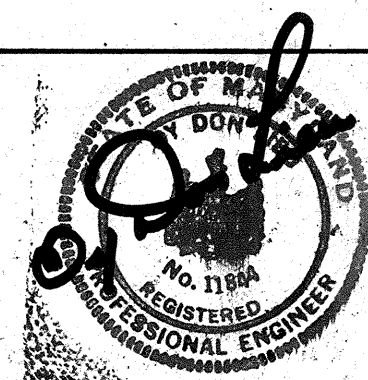
Robert J. Davis 10-24-94
CHIEF, BUREAU OF UTILITIES DATE

DEPARTMENT OF PUBLIC WORKS
HOWARD COUNTY, MARYLAND

James A. Shum 10/24/04
DIRECTOR OF PUBLIC WORKS DATE

Paul W. Depson 10/12/04
CHIEF, BUREAU OF ENGINEERING DATE

HOWARD COUNTY
DEPARTMENT OF PUBLIC WORKS
BUREAU OF ENGINEERING



DES: ODL

DRN: ODL

CHK: ODL

DATE: 10-17-94

| BY | NO. | REVISION | DATE |
|----|-----|----------|------|
| | | | |
| | | | |
| | | | |

VICINITY MAP
GENERAL NOTES
PLAN AND PROFILE

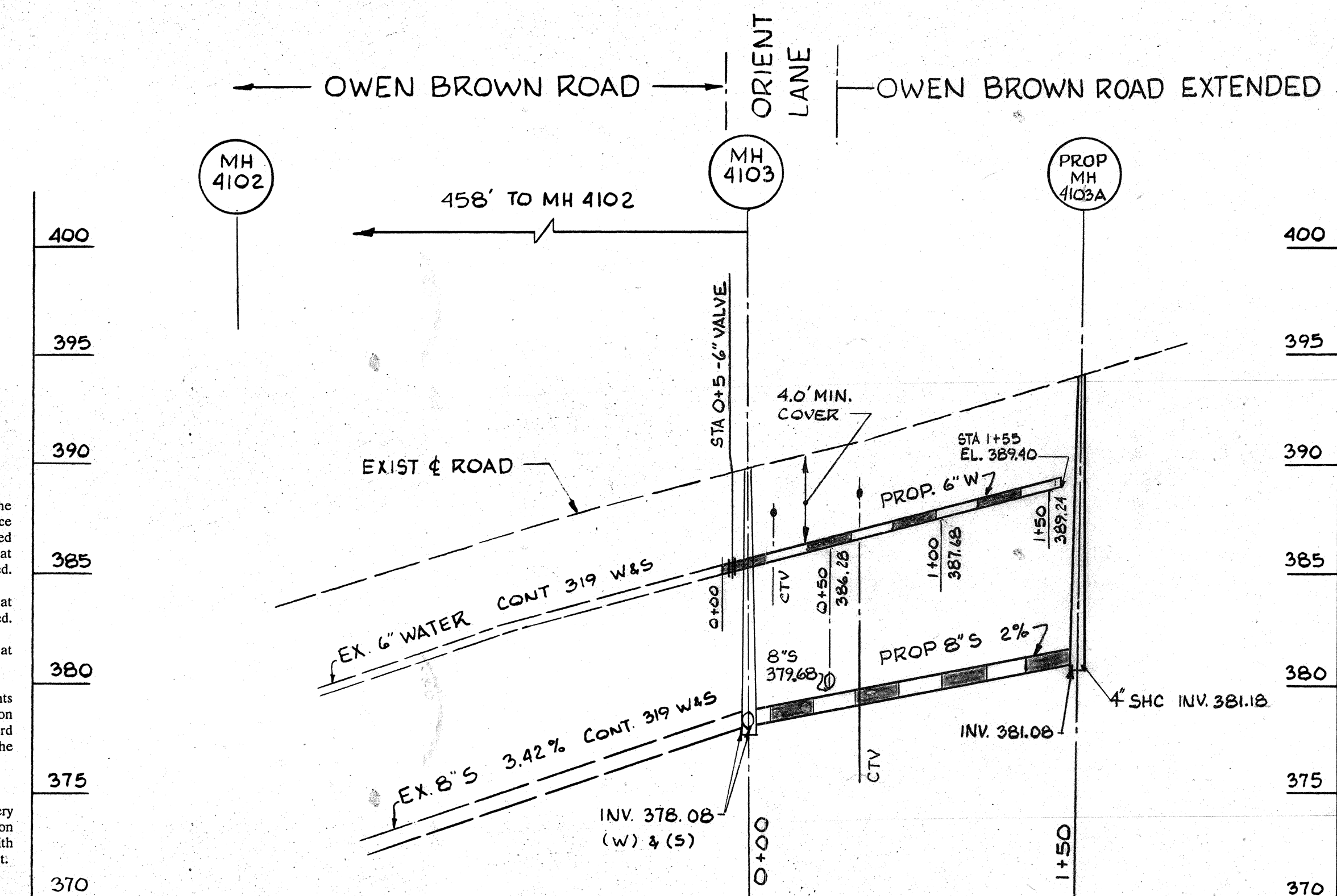
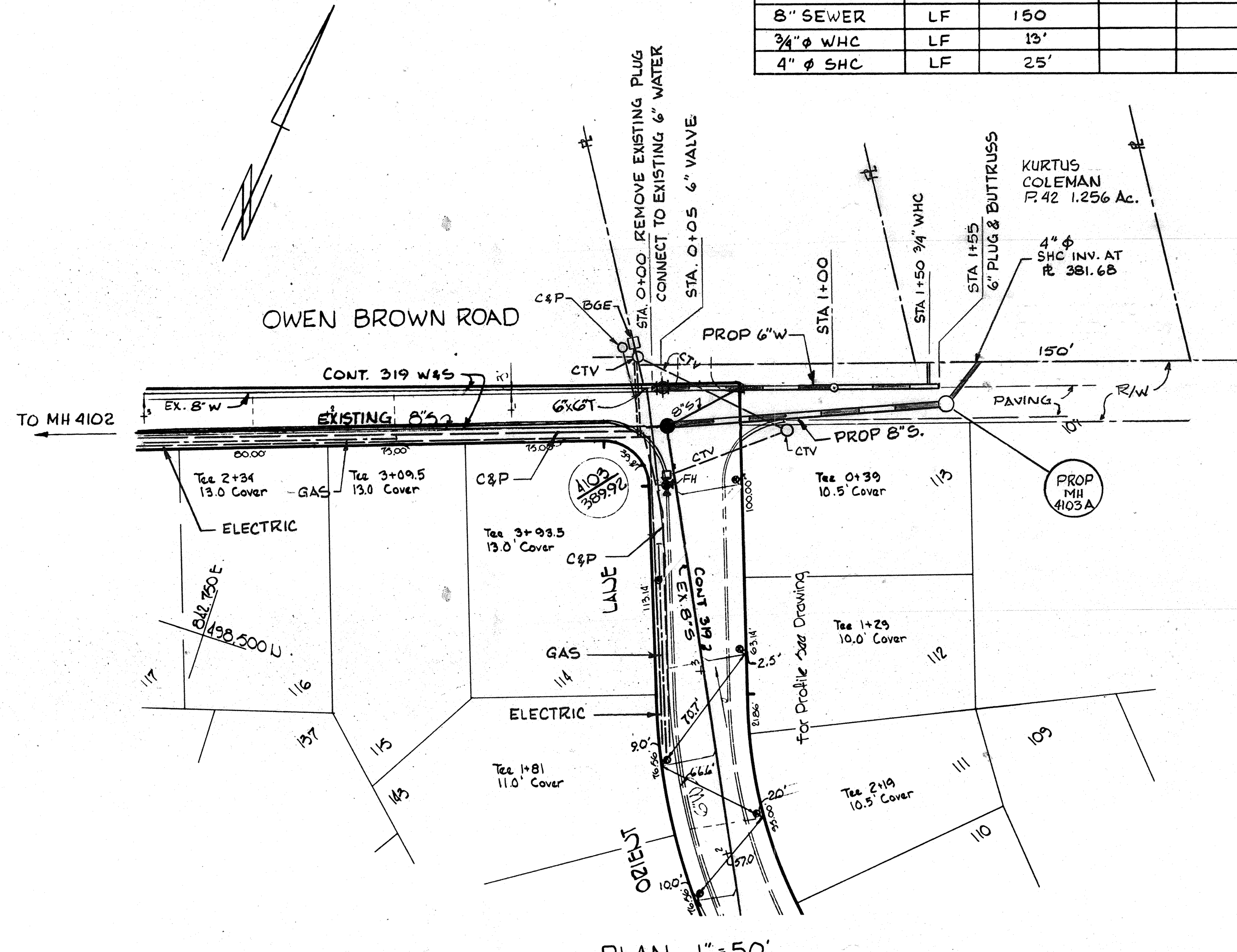
OWEN BROWN ROAD WATER
AND SEWER EXTENSION
CONTRACT C-319 -W & S

ELECTION DISTRICT 6

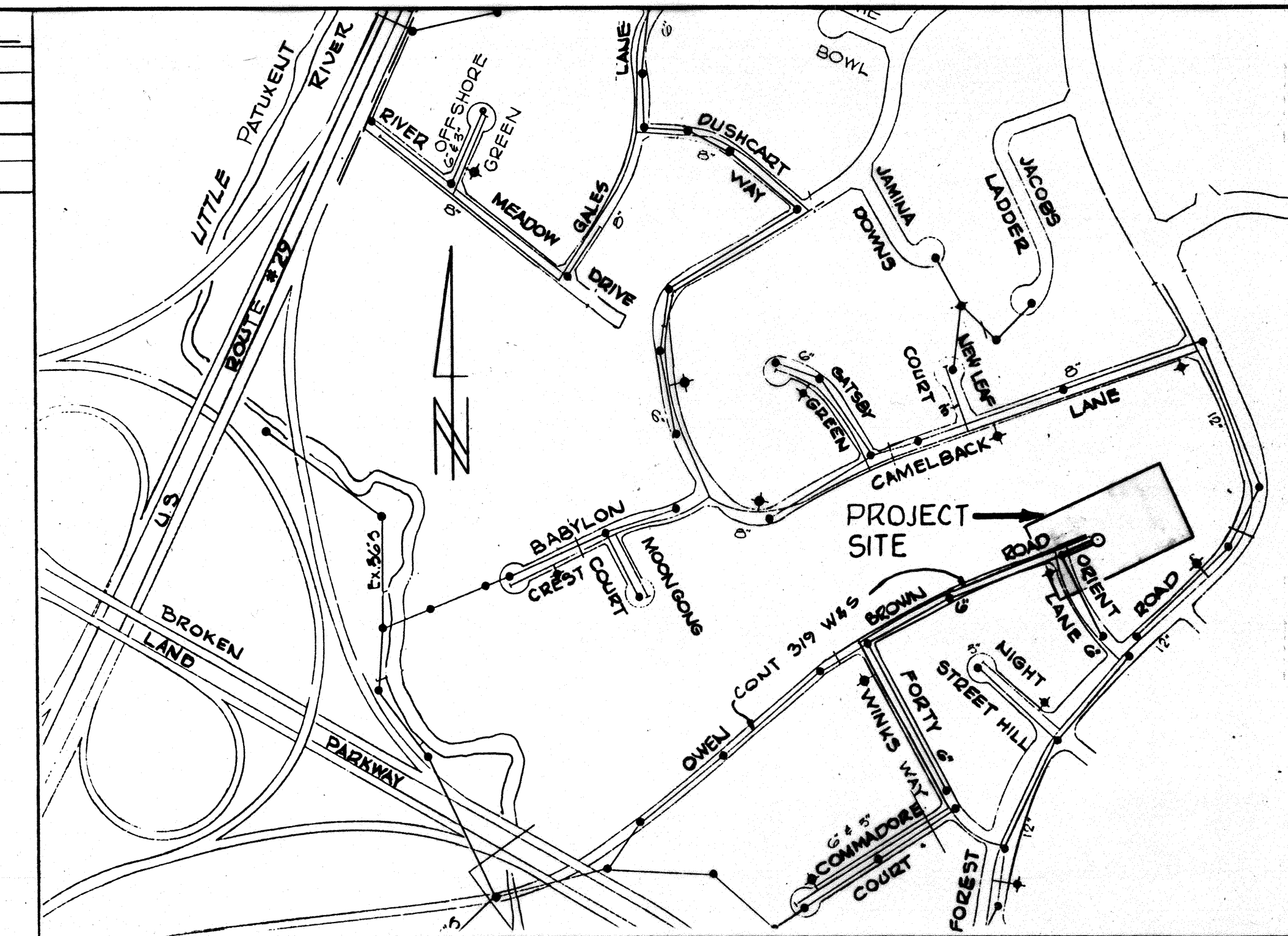
SCALE
AS
SHOWN

SHEET
6A OF 10

| QUANTITIES | | | | |
|---------------|------|----------|----------|----------|
| ITEM | UNIT | ESTIMATE | AS BUILT | SUPPLIER |
| 6" WATER MAIN | LF | 155 | | |
| 8" SEWER | LF | 150 | | |
| 3/4" WHC | LF | 13' | | |
| 4" SHC | LF | 25' | | |



PROFILE: HOR 1" = 50'
VERT 1" = 5'



NUMBER OF LOTS - 1
TYPE OF BUILDINGS - RES.
NUMBER OF SHC - 1
NUMBER OF WHC - 1

VICINITY MAP
SCALE: 1" = 400'

DRAINAGE AREA - LITTLE PATUXENT
SEWER CODE - 5480000

Sequence of Construction

- OBTAIN GRADING PERMIT.
 - Contact Howard County Division of Construction Inspection (313-1880) prior to starting date.
 - Install erosion and sediment control devices as per Section 219 of the Howard County Design Manual Vol. IV and Appendix SC.
 - Excavate and install proposed water and sewer mains and 3/4" water house connection and sewer house connection. Trenches for the construction of utilities is limited to three (3) pipe lengths or that which can be backfilled and stabilized within one working day, whichever is shorter.
- See Appendix SC for,
Standard sediment control notes, temporary seeding notes, permanent seeding notes, straw bale dike details and construction specs.
- Restore paving and earth trenches to their original condition as per Howard County Standards.
 - Upon permission from Howard County Sediment Control Inspector, remove Sediment Control Devices.
 - Final grade all disturbed areas and stabilize with permanent seeding.

By the Developer:

"I/We certify that all development and construction will be done according to this plan, and that any responsible personnel involved in the Construction project will have a Certificate of Attendance at a Department of the Environment Approved Training Program for the Control of Sediment and Erosion before beginning this project. I also authorize periodic on-site inspection by Howard Soil Conservation District."

Paul W. Depson
Signature of Developer 10/12/04
Date

By the Engineer:

"I certify that this plan for erosion and sediment control represents a practical and workable plan based on my personal knowledge of the site conditions and that it was prepared in accordance with the requirements of the Howard Soil Conservation District."

Paul W. Depson
Signature of Engineer 10-18-94
Date

NOTE:

THE UTILITIES SHOWN (BGE, TELEPHONE, CABEL T.V.) ARE BASED ON REFERENCE DRAWINGS PROVIDED BY THE UTILITY COMPANIES. NO TEST PITS WERE PERFORMED TO VERIFY THE ACCURACY OF THE REFERENCE DRAWINGS. THE CONTRACTOR SHALL NOTIFY THE ENGINEER IMMEDIATELY OF ANY CONFLICTS OR DISCREPANCIES WITH THE LOCATIONS OF THE UTILITIES SHOWN ON THE PLAN.

As-Built

THE SPECIFIED DEPTH FOR PATCHING EXISTING PAVING SHALL BE IN ACCORDANCE WITH PAVING SECTION P-6 OF STANDARD DETAIL R-2.02 AND STANDARD DETAIL G-4.01 OF THE HOWARD COUNTY DESIGN MANUAL VOL. IV.