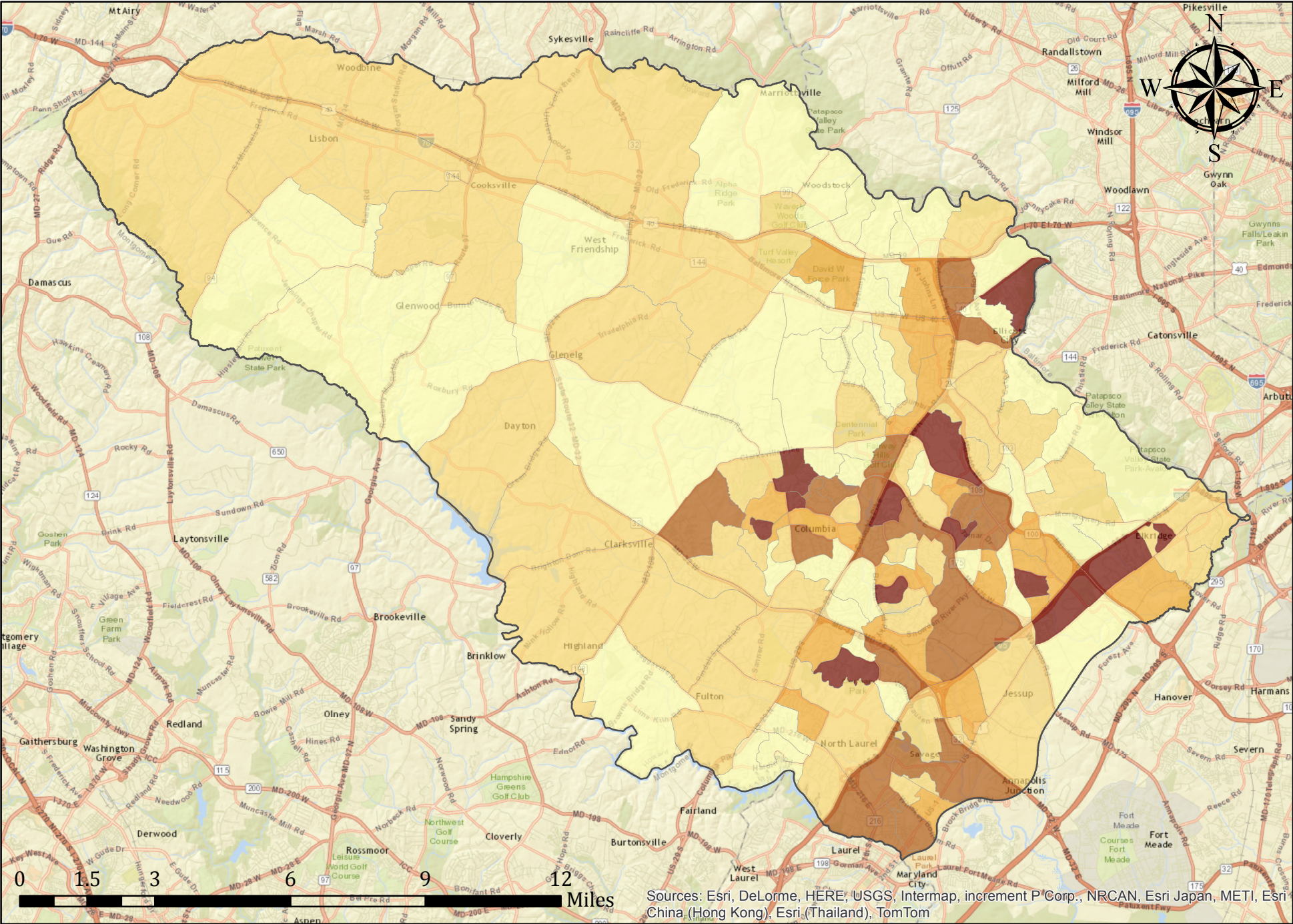


Number of Non-Married Family Households with Related Children Under 18 by Census Block Groups



According to the 2010 Census, Howard County had 9,168 non-married family households with at least one related child under 18.

Non-married family households are those households with related individuals who are not married. The most predominate type of family household that falls under this definition are female households with no husband present. It should be noted same-sex couples, under the census definition would be included in non-married family households.

---9% of all households were single family households with at least one related child under 18

--- 23% of family households with at least one child under 18 were single family households

Legend

Non-Married Family Households with Related Children Under 18

- 8 - 29 (49)
- 30 - 56 (47)
- 57 - 88 (20)
- 89 - 131 (25)
- 132 - 184 (13)
- County Boundary