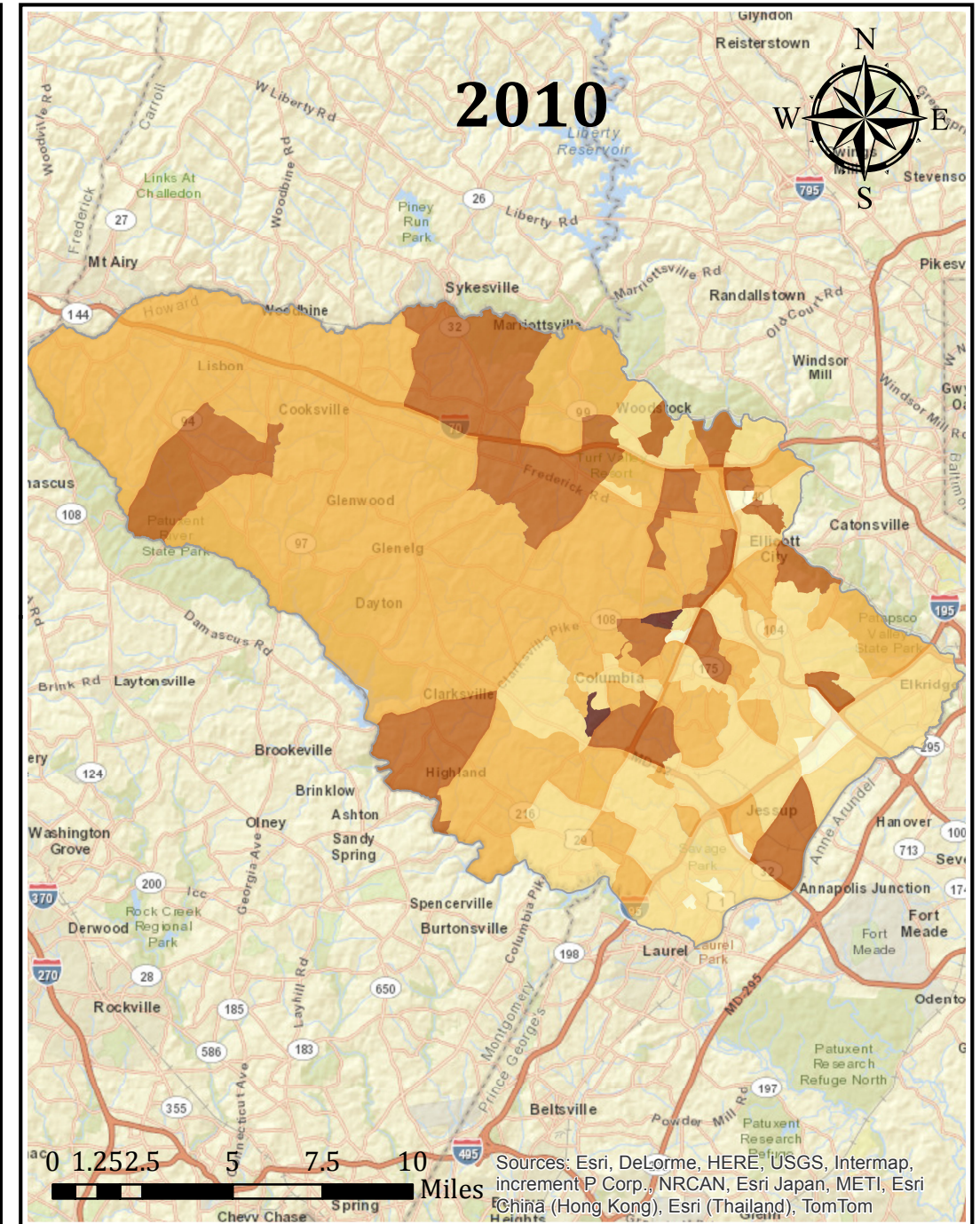
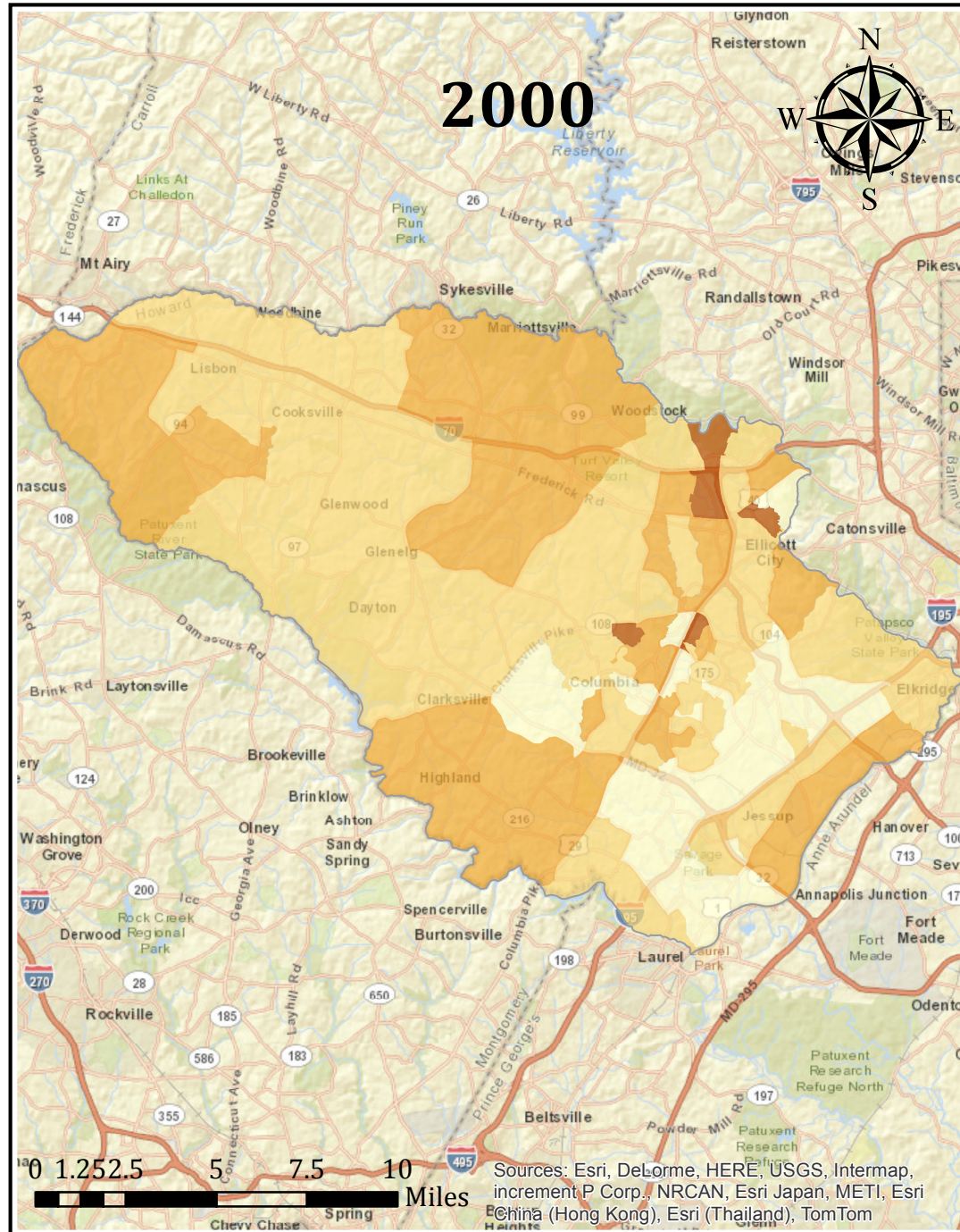
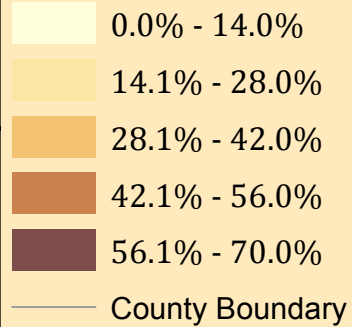


Percent Households with One or More People 60 and Over

Between 2000 and 2010 over 85% of all household growth came from those households with one or more people 60 years older. According to the United State Census Bureau, in 2000 over 18,000 or 20% of all households in Howard County had one or more people 60 years and older. Within 10 years (2010), the number of households with one or more people 60 years and older increased to nearly 31,000 a 70% increase. Households with one or people 60 and older currently account for nearly 30% of all households.

Legend



Source: U.S. Census Bureau, 2000 and 2010 Decennial Census