

Howard County

M A R Y L A N D

Route One Corridor-Dobbin/Snowden Study Area Land Use - January 1, 2011

Legend

Residential

- Undeveloped Residential
- Low Density Residential
- Medium Density Residential
- High Density Residential
- Mobile Homes

Commercial

- Retail
- Office / Service
- Undeveloped Commercial

Industrial

- Undeveloped Industrial
- Industrial

Institutional

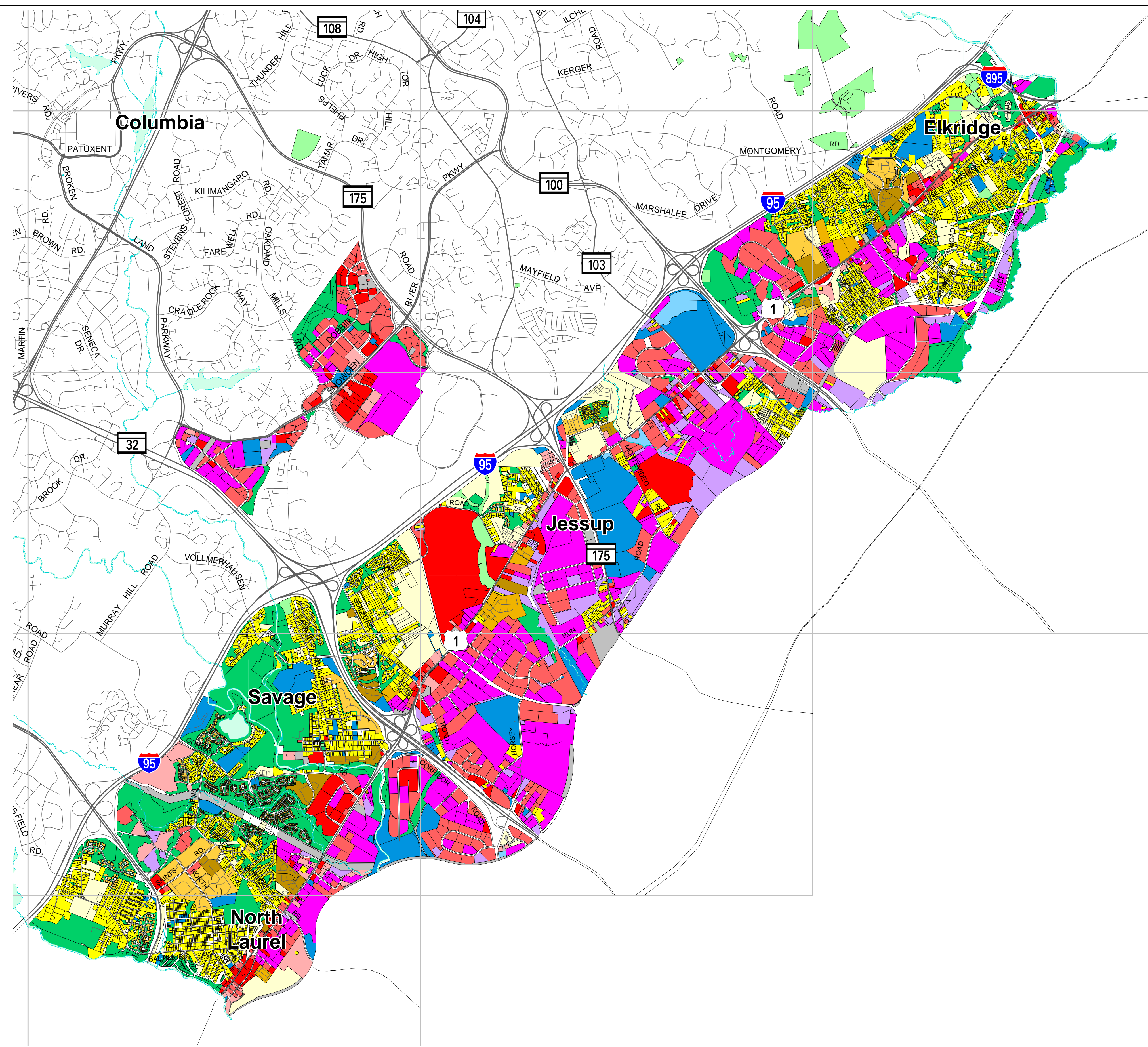
- Undeveloped Institutional
- Institutional

Park, Open Space and Preserved

- Park and Open Space
- Preservation Easements

Other

- Transportation, Communications, Utility Right-of way



Source: Howard County Department of Planning and Zoning
Land Use Database @ January 1, 2011


Scale: 1 inch = 2,500 feet

